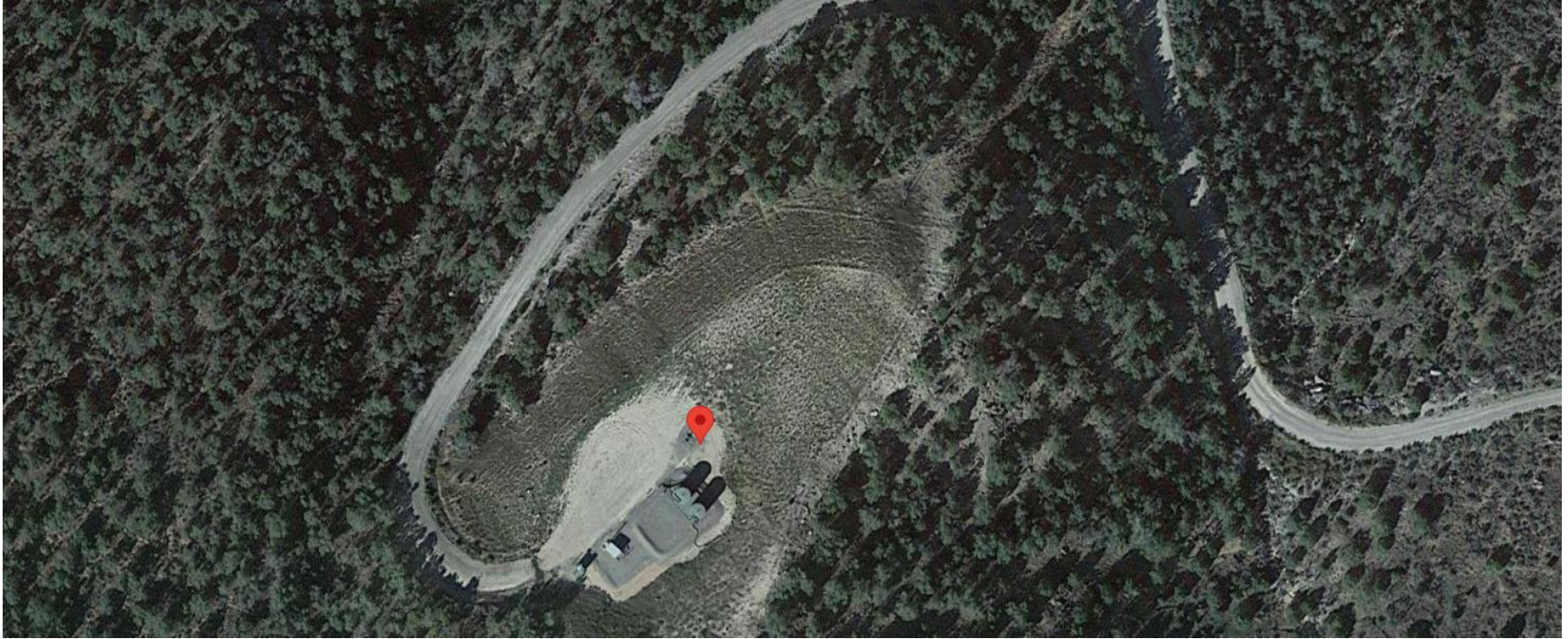


Storm Water Management and Erosion control
Location Name: CAERUS PICEANCE LLC SAVAGE 2-31 (RL2) Pad
Location #: 324005



**Location Overview: Location is within High
Priority/Density/Black Bear Habitat areas & in close proximity
to NSO Habitat area. Location is approximately 439 yards
from Porcupine Creek.**

Section/Township/Range: 2 7S94W

Storm water Management and Erosion control
Location Name: CAERUS PICEANCE LLC SAVAGE 2-31 (RL2) Pad
Location #: 324005



North West corner of location.



North East corner of location.



South West corner of location.



South East corner of location.