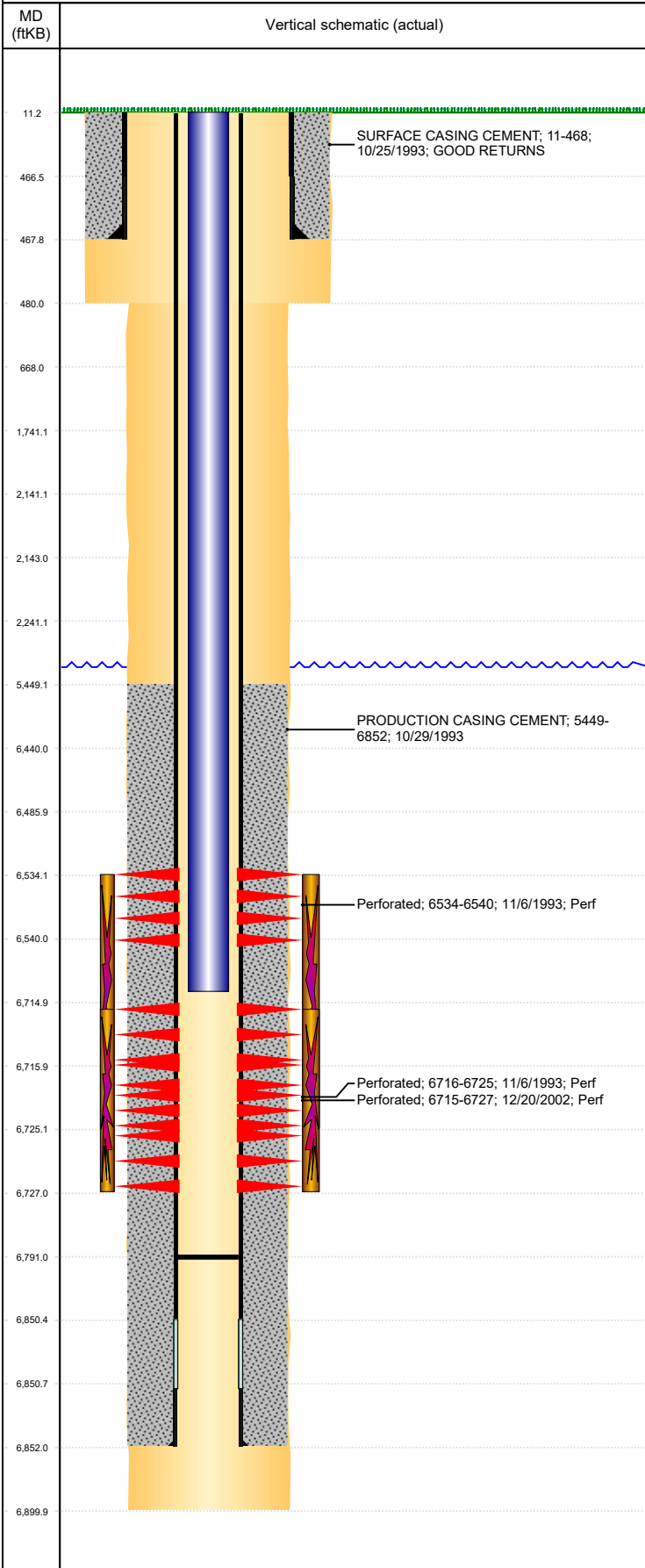




P&A Wellbore For State

Well Name: WATKINS 12-11

Land, Original Hole, 10/11/2023 10:51:25 AM



Well Header									
Surface UWI 0512317531		Business Unit Rockies		Gov Auth Dist		Prod Tree Loc Land			
Orig. KB to Gnd (ft) 11.00		Original Spud Date 10/25/1993		Abandon Date		Well Sub-Status PR		High...	
								N	
Comment frac'd into 1/04 by Millage 22-12 LIMITED ENTRY TWO DIFFERENT PRODUCTION CASING GRADES USED CASING 3 1/2 M-75 AND 3 1/2 B-70									
Surface Location (Congressional)									
Qtr 3 NE	Qtr 4 SW	Section 12	Twshp 4	Twshp...	Range 64	Rng E/... W	Latitude (°) 40.32559538	Longitude (°) -104.500660526	
Wellbore Sections									
Section Des		Hole Size (in)		Act Top (ftKB)		Act Btm (ftKB)			
SURFACE		12 1/4		11.0		480.0			
PRODUCTION		7 7/8		480.0		6,900.0			
Casing Strings									
Csg Des		Run Date	OD (in)	Wt/Len (lb/ft)	Grade	Top Depth (MD) (ftKB)	Set Depth (MD) (ftKB)		
Surface		10/25/1993	8 5/8	24.00	M-50	11	468		
Production Casing		10/29/1993	3 1/2	7.70	M-75	11	6852		
Cement									
Des		Start Date		Top (ftKB)		Btm (ftKB)			
SURFACE CASING CEMENT		10/25/1993		11.0		468.0			
PRODUCTION CASING CEMENT		10/29/1993		5,449.0		6,852.0			
Zone Statuses									
Zone Name	Status Date	Status	Fluid Type	Job			Prod Method		
NIORRARA-CO...		PR							
NIORRARA CODELL	12/6/1993	PR		DRILLING/COMPLETION - ORIGINAL, 10/25/199...			Flowing		
CODELL	12/6/1993	PR		DRILLING/COMPLETION - ORIGINAL, 10/25/199...			Flowing		
CODELL	12/31/2002	PR		RE-FRAC, 12/18/2002 00:00			Flowing		
Perforation Data									
Linked Zone		Explosive Type	Entered Shot Total	Top (ftKB)	Btm (ftKB)	Date			
NIORRARA, Original Hole			15	6,534.0	6,540.0	11/6/1993			
CODELL, Original Hole			48	6,715.0	6,727.0	12/20/2002			
CODELL, Original Hole				6,716.0	6,725.0	11/6/1993			
Stimulation Intervals									
Zone		Start Date		Top (ftKB)		Btm (ftKB)			
NIORRARA-CODELL, Original Hole		11/12/1993		6,534.0		6,725.0			
CODELL, Original Hole		12/27/2002		6,715.0		6,727.0			
Other In Hole									
Run Date	Des		Make	OD (in)	Top (ftKB)	Btm (ftKB)			
Logs									
Date	Type			Depth Top (MD) (ftKB)	Btm (ftKB)				
10/30/1993	COMPENSATED DENSITY			4,110	6,894.0				
10/30/1993	INDUCTION			468	6,894.0				
11/6/1993	CEMENT BOND			6,350	6,791.0				
Plug Back Total Depths									
Date	Type	Com			PBSD (ftKB)				
11/6/1993	FILL	DEPTH LOGGER ON CBL			6,792				
12/30/2002	FILL	TAG @ 6791'			6,791				