

NOBLE ENERGY, INC



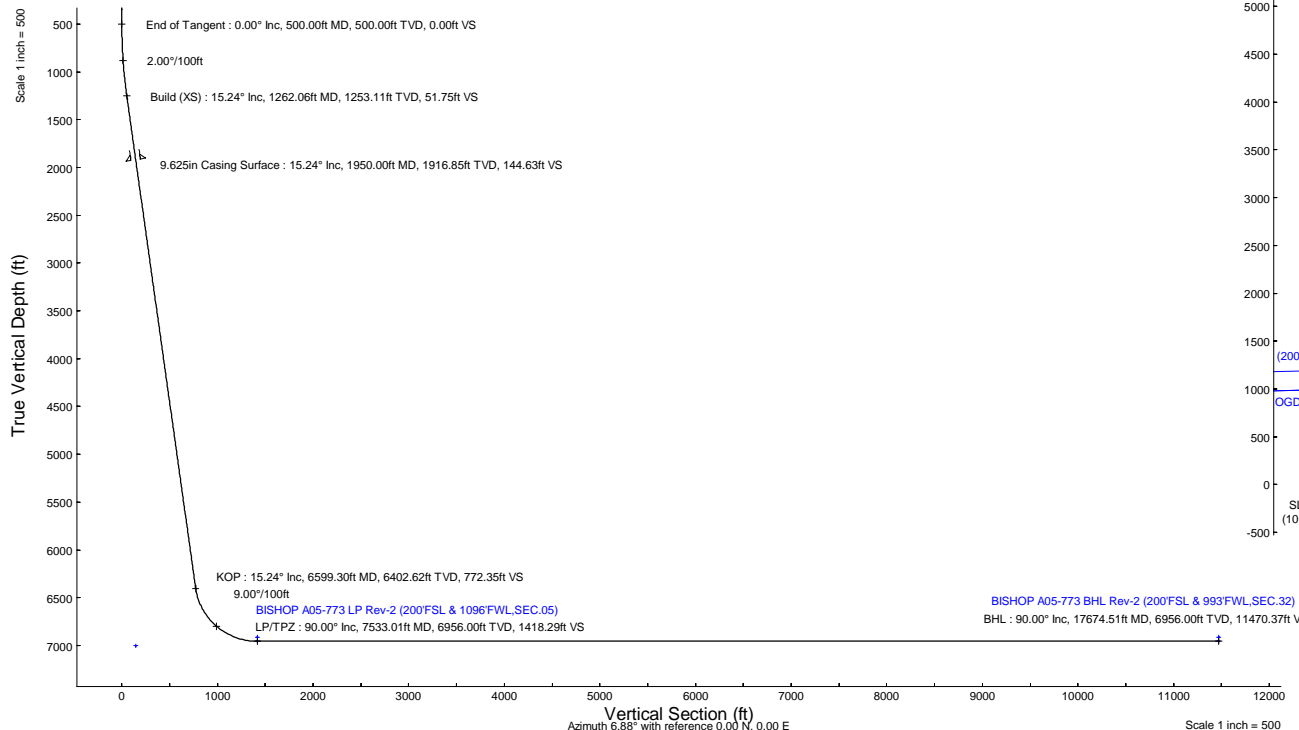
Location:	COLORADO	Slot:	SLOT#26 BISHOP A05-773 (1011'FNL & 418'FEL,SEC.07)
Field:	WELD COUNTY (NOBLE NAD 83 GRID)	Well:	BISHOP A05-773
Facility:	SEC.07-T06N-R64W	Wellbore:	BISHOP A05-773 PWB

Plot reference wellpath is BISHOP A05-773 (REV-C.0) PWP	Grid System: NAD83 / Lambert Colorado SP, Northern Zone (501), US feet
True vertical depths are referenced to RIG (4744GL+30KB@4774RKB) (RKB)	North Reference: Grid north
Reference wellpath measured depths are referenced to RIG (4744GL+30KB@4774RKB) (RKB)	Scale: True distance
RIG (4744GL+30KB@4774RKB) (RKB) to Mean Sea Level: 4774 feet	Coordinates are in feet referenced to Slot
Mean Sea Level to Ground level (At Slot: SLOT#26 BISHOP A05-773 (1011'FNL & 418'FEL,SEC.07)): 0 feet	Depths are in feet
Offset wellpath MDs are referenced to each path's default MD datum	Created by: martsam01 on 2023-10-06; Database: WA_Denver

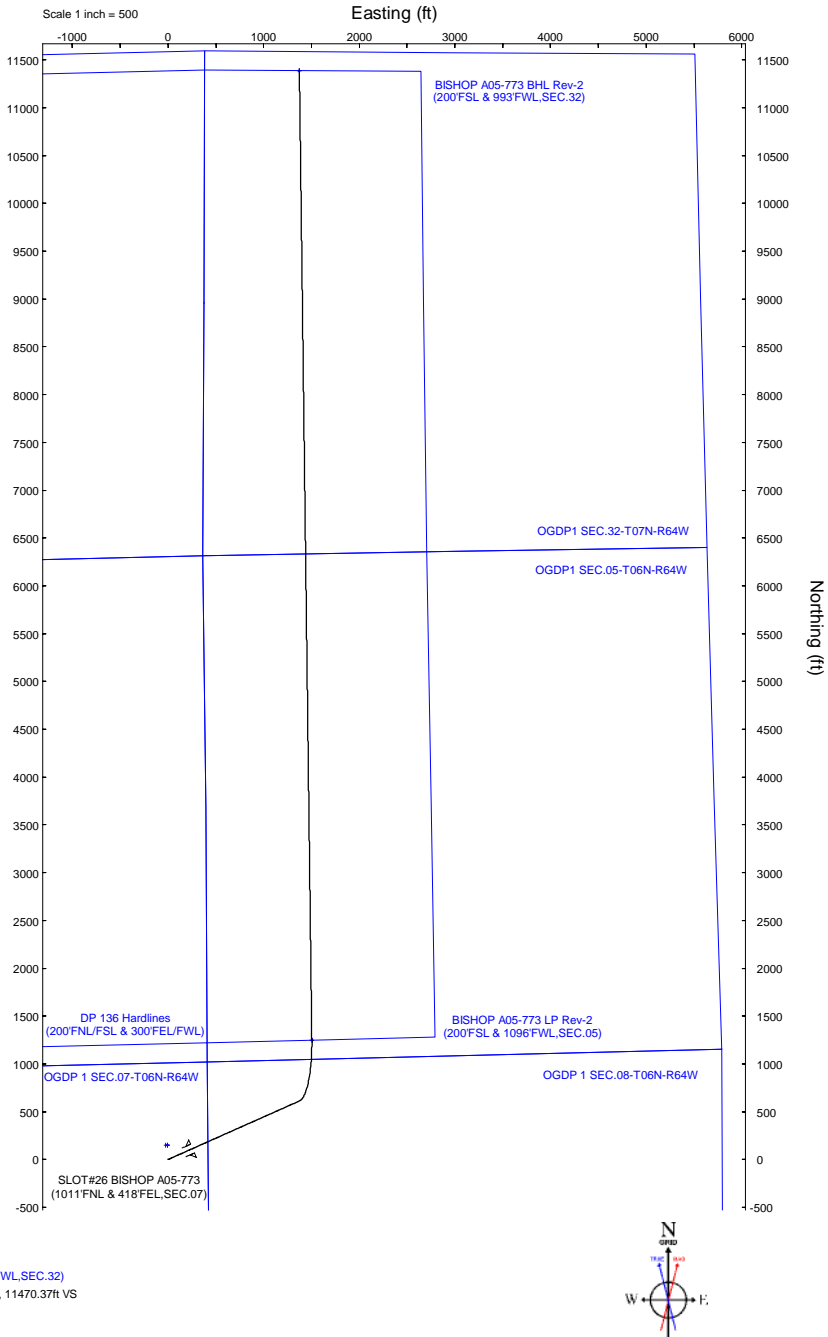
Location Information					
Facility Name				Grid East (US ft)	Grid North (US ft)
SEC.07-T06N-R64W				3254380.716	1428262.611
Slot				Latitude	Longitude
SLOT#26 BISHOP A05-773 (1011'FNL & 418'FEL,SEC.07)				40°30'19.3680"N	104°35'6.7200"W
Local N (ft)				Local E (ft)	Local N (ft)
SLOT#26 BISHOP A05-773 (1011'FNL & 418'FEL,SEC.07)				6.55	1428112.941
RIG (4744GL+30KB@4774RKB) (RKB) to Ground level (At Slot: SLOT#26 BISHOP A05-773 (1011'FNL & 418'FEL,SEC.07))				4774ft	
Mean Sea Level to Ground level (At Slot: SLOT#26 BISHOP A05-773 (1011'FNL & 418'FEL,SEC.07))				0ft	
RIG (4744GL+30KB@4774RKB) (RKB) to Mean Sea Level				4774ft	

Well Profile Data							
Design Comment	MD (ft)	Inc. (")	Az (")	TVD (ft)	Local N (ft)	Local E (ft)	VS (ft)
SHL	30.00	0.000	65.977	30.00	0.00	0.00	0.00
End of Tangent	500.00	0.000	65.977	500.00	0.00	0.00	0.00
Build (XS)	1262.06	15.241	65.977	1253.11	41.02	92.03	51.75
KOP	6599.30	15.241	65.977	6402.62	612.21	1373.58	772.35
LP/TPZ	7533.01	90.000	359.266	6956.00	1247.11	1503.95	1418.29
BHL	17674.51	90.000	359.266	6956.00	11387.78	1374.05	11470.37

Targets							
Name	MD (ft)	TVD (ft)	Local N (ft)	Local E (ft)	Grid East (US ft)	Grid North (US ft)	Latitude
OGDP 1 SEC.07-T06N-R64W	N/A	2.00	149.68	-6.55	3254380.72	1428262.61	40°30'19.3680"N
OGDP 1 SEC.08-T06N-R64W	N/A	2.00	149.68	-6.55	3254380.72	1428262.61	40°30'19.3680"N
OGDP1 SEC.05-T06N-R64W	N/A	20.00	168.11	-4258.91	3250128.51	1428281.04	40°30'19.9800"N
OGDP1 SEC.06-T06N-R64W	N/A	20.00	168.11	-4258.91	3250128.51	1428281.04	40°30'19.9800"N
OGDP1 SEC.31-T07N-R64W	N/A	20.00	168.11	-4258.91	3250128.51	1428281.04	40°30'19.9800"N
OGDP1 SEC.32-T07N-R64W	N/A	20.00	168.11	-4258.91	3250128.51	1428281.04	40°30'19.9800"N
BISHOP A05-773 BHL Rev-1 (200FSL & 993FWL,SEC.32)	N/A	6914.00	11387.78	1374.05	3255761.27	1439500.31	40°32'10.2893"N
BISHOP A05-773 LP Rev-1 (200FSL & 1096FWL,SEC.05)	N/A	6914.00	1247.11	1503.95	3255891.17	1429360.00	40°30'30.0572"N
BISHOP A05-773 BHL Rev-2 (200FSL & 993FWL,SEC.32)	17674.51	6956.00	11387.78	1374.05	3255761.27	1439500.31	40°32'10.2893"N
BISHOP A05-773 LP Rev-2 (200FSL & 1096FWL,SEC.05)	7533.01	6956.00	1247.11	1503.95	3255891.17	1429360.00	40°30'30.0572"N
DP 136 Hardlines (200FNL/FSL & 300FEL/FWL)	N/A	7003.00	149.67	-22.68	3254364.58	1428262.61	40°30'19.3716"N



Survey Program					
Start MD (ft)	End MD (ft)	Tool	Model	Log Name/Comment	Wellbore
30.00	1950.00	OWSG MWD rev2	OWSG MWD rev2 (MS+IFR1)		BISHOP A05-773 PWB
1950.00	17745.37	OWSG MWD rev2	OWSG MWD rev2 (MS+IFR1)		BISHOP A05-773 PWB



BGGM (1900.0 to 2024.0) Dp: 66.68" Field: 51663.1 ft
Magnetic North is 7.38 degrees East of True North (at 10/4/2023)
Grid North is 0.59 degrees East of True North
To correct azimuth from True to Grid subtract 0.59 degrees
To correct azimuth from Magnetic to Grid add 6.79 degrees

REFERENCE WELLPATH IDENTIFICATION			
Operator	NOBLE ENERGY, INC	Well	BISHOP A05-773
Field	WELD COUNTY (NOBLE NAD 83 GRID)	API/Legal	
Facility	SEC.07-T06N-R64W	Wellbore	BISHOP A05-773 PWB
Slot	SLOT#26 BISHOP A05-773 (1011'FNL & 418'FEL,SEC.07)		

REPORT SETUP INFORMATION			
Projection System	NAD83 / Lambert Colorado SP, Northern Zone (501), US feet	Software System	WellArchitect® 6.0
North Reference	Grid	User	Martsam01
Scale	0.999967	Report Generated	10/6/2023 at 6:02:00 PM
Convergence at slot	0.59° East	Database	WA_Denver

WELLPATH LOCATION						
	Local coordinates		Grid coordinates		Geographic coordinates	
	North[ft]	East[ft]	Easting[US ft]	Northing[US ft]	Latitude	Longitude
Slot Location	-149.68	6.55	3254387.27	1428112.94	40.5049690°	-104.5851820°
Facility Reference Pt			3254380.72	1428262.61	40.5053800°	-104.5852000°
Field Reference Pt			3000000.00	4454105.15	48.7761986°	-105.5000000°

WELLPATH DATUM			
Calculation method	Minimum curvature	RIG (4744'GL+30'KB@4774'RKB) (RKB) to Facility Vertical Datum	4774.00ft
Horizontal Reference Pt	Slot	RIG (4744'GL+30'KB@4774'RKB) (RKB) to Mean Sea Level	4774.00ft
Vertical Reference Pt	RIG (4744'GL+30'KB@4774'RKB) (RKB)	RIG (4744'GL+30'KB@4774'RKB) (RKB) to Ground Level at Slot (SLOT#26 BISHOP A05-773 (1011'FNL & 418'FEL,SEC.07))	4774.00ft
MD Reference Pt	RIG (4744'GL+30'KB@4774'RKB) (RKB)	Section Origin	N 0.00, E 0.00 ft
Field Vertical Reference	Mean Sea Level	Section Azimuth	6.88°

REFERENCE WELLPATH IDENTIFICATION			
Operator	NOBLE ENERGY, INC	Well	BISHOP A05-773
Field	WELD COUNTY (NOBLE NAD 83 GRID)	API/Legal	
Facility	SEC.07-T06N-R64W	Wellbore	BISHOP A05-773 PWB
Slot	SLOT#26 BISHOP A05-773 (1011'FNL & 418'FEL,SEC.07)		

WELLPATH DATA (183 stations) † = interpolated, ‡ = extrapolated station											
MD [ft]	Inclination [°]	Azimuth [°]	TVD [ft]	Vert Sect [ft]	North [ft]	East [ft]	Latitude	Longitude	DLS [°/100ft]	Comments	
0.00†	0.000	65.977	0.00	0.00	0.00	0.00	40.5049690	-104.5851820	0.00		
30.00	0.000	65.977	30.00	0.00	0.00	0.00	40.5049690	-104.5851820	0.00	SHL	
130.00†	0.000	65.977	130.00	0.00	0.00	0.00	40.5049690	-104.5851820	0.00		
230.00†	0.000	65.977	230.00	0.00	0.00	0.00	40.5049690	-104.5851820	0.00		
330.00†	0.000	65.977	330.00	0.00	0.00	0.00	40.5049690	-104.5851820	0.00		
430.00†	0.000	65.977	430.00	0.00	0.00	0.00	40.5049690	-104.5851820	0.00		
500.00	0.000	65.977	500.00	0.00	0.00	0.00	40.5049690	-104.5851820	0.00	End of Tangent	
530.00†	0.600	65.977	530.00	0.08	0.06	0.14	40.5049692	-104.5851815	2.00		
630.00†	2.600	65.977	629.96	1.51	1.20	2.69	40.5049722	-104.5851723	2.00		
730.00†	4.600	65.977	729.75	4.74	3.76	8.43	40.5049791	-104.5851516	2.00		
830.00†	6.600	65.977	829.27	9.75	7.73	17.34	40.5049897	-104.5851194	2.00		
930.00†	8.600	65.977	928.39	16.54	13.11	29.42	40.5050042	-104.5850757	2.00		
1030.00†	10.600	65.977	1026.98	25.11	19.90	44.65	40.5050224	-104.5850207	2.00		
1130.00†	12.600	65.977	1124.93	35.43	28.09	63.02	40.5050443	-104.5849544	2.00		
1230.00†	14.600	65.977	1222.13	47.51	37.66	84.49	40.5050700	-104.5848768	2.00		
1262.06	15.241	65.977	1253.11	51.75	41.02	92.03	40.5050790	-104.5848495	2.00	Build (XS)	
1330.00†	15.241	65.977	1318.65	60.92	48.29	108.35	40.5050985	-104.5847906	0.00		
1430.00†	15.241	65.977	1415.14	74.42	58.99	132.36	40.5051272	-104.5847039	0.00		
1530.00†	15.241	65.977	1511.62	87.92	69.70	156.37	40.5051559	-104.5846171	0.00		
1630.00†	15.241	65.977	1608.10	101.43	80.40	180.38	40.5051846	-104.5845304	0.00		
1730.00†	15.241	65.977	1704.59	114.93	91.10	204.39	40.5052133	-104.5844437	0.00		
1830.00†	15.241	65.977	1801.07	128.43	101.80	228.40	40.5052419	-104.5843569	0.00		
1930.00†	15.241	65.977	1897.55	141.93	112.50	252.42	40.5052706	-104.5842702	0.00		
2030.00†	15.241	65.977	1994.03	155.43	123.21	276.43	40.5052993	-104.5841835	0.00		
2130.00†	15.241	65.977	2090.52	168.93	133.91	300.44	40.5053280	-104.5840967	0.00		
2230.00†	15.241	65.977	2187.00	182.43	144.61	324.45	40.5053567	-104.5840100	0.00		
2330.00†	15.241	65.977	2283.48	195.94	155.31	348.46	40.5053854	-104.5839232	0.00		
2430.00†	15.241	65.977	2379.96	209.44	166.01	372.47	40.5054141	-104.5838365	0.00		
2530.00†	15.241	65.977	2476.45	222.94	176.72	396.48	40.5054428	-104.5837498	0.00		
2630.00†	15.241	65.977	2572.93	236.44	187.42	420.50	40.5054715	-104.5836630	0.00		
2730.00†	15.241	65.977	2669.41	249.94	198.12	444.51	40.5055002	-104.5835763	0.00		
2830.00†	15.241	65.977	2765.90	263.44	208.82	468.52	40.5055289	-104.5834895	0.00		
2930.00†	15.241	65.977	2862.38	276.94	219.52	492.53	40.5055576	-104.5834028	0.00		
3030.00†	15.241	65.977	2958.86	290.45	230.23	516.54	40.5055863	-104.5833161	0.00		
3130.00†	15.241	65.977	3055.34	303.95	240.93	540.55	40.5056150	-104.5832293	0.00		
3230.00†	15.241	65.977	3151.83	317.45	251.63	564.56	40.5056436	-104.5831426	0.00		
3330.00†	15.241	65.977	3248.31	330.95	262.33	588.58	40.5056723	-104.5830559	0.00		
3430.00†	15.241	65.977	3344.79	344.45	273.03	612.59	40.5057010	-104.5829691	0.00		
3530.00†	15.241	65.977	3441.27	357.95	283.74	636.60	40.5057297	-104.5828824	0.00		
3630.00†	15.241	65.977	3537.76	371.45	294.44	660.61	40.5057584	-104.5827956	0.00		
3730.00†	15.241	65.977	3634.24	384.95	305.14	684.62	40.5057871	-104.5827089	0.00		
3830.00†	15.241	65.977	3730.72	398.46	315.84	708.63	40.5058158	-104.5826222	0.00		
3930.00†	15.241	65.977	3827.21	411.96	326.54	732.64	40.5058445	-104.5825354	0.00		
4030.00†	15.241	65.977	3923.69	425.46	337.25	756.66	40.5058732	-104.5824487	0.00		
4130.00†	15.241	65.977	4020.17	438.96	347.95	780.67	40.5059019	-104.5823619	0.00		



Planned Wellpath Report

BISHOP A05-773 (REV-C.0) PWP



REFERENCE WELLPATH IDENTIFICATION			
Operator	NOBLE ENERGY, INC	Well	BISHOP A05-773
Field	WELD COUNTY (NOBLE NAD 83 GRID)	API/Legal	
Facility	SEC.07-T06N-R64W	Wellbore	BISHOP A05-773 PWB
Slot	SLOT#26 BISHOP A05-773 (1011'FNL & 418'FEL,SEC.07)		

WELLPATH DATA (183 stations) † = interpolated, ‡ = extrapolated station												
MD [ft]	Inclination [°]	Azimuth [°]	TVD [ft]	Vert Sect [ft]	North [ft]	East [ft]	Latitude		Longitude		DLS [°/100ft]	Comments
4230.00†	15.241	65.977	4116.65	452.46	358.65	804.68	40.5059306		-104.5822752		0.00	
4330.00†	15.241	65.977	4213.14	465.96	369.35	828.69	40.5059593		-104.5821885		0.00	
4430.00†	15.241	65.977	4309.62	479.46	380.05	852.70	40.5059880		-104.5821017		0.00	
4530.00†	15.241	65.977	4406.10	492.97	390.76	876.71	40.5060166		-104.5820150		0.00	
4630.00†	15.241	65.977	4502.58	506.47	401.46	900.72	40.5060453		-104.5819282		0.00	
4730.00†	15.241	65.977	4599.07	519.97	412.16	924.74	40.5060740		-104.5818415		0.00	
4830.00†	15.241	65.977	4695.55	533.47	422.86	948.75	40.5061027		-104.5817548		0.00	
4930.00†	15.241	65.977	4792.03	546.97	433.56	972.76	40.5061314		-104.5816680		0.00	
5030.00†	15.241	65.977	4888.52	560.47	444.27	996.77	40.5061601		-104.5815813		0.00	
5130.00†	15.241	65.977	4985.00	573.97	454.97	1020.78	40.5061888		-104.5814945		0.00	
5230.00†	15.241	65.977	5081.48	587.47	465.67	1044.79	40.5062175		-104.5814078		0.00	
5330.00†	15.241	65.977	5177.96	600.98	476.37	1068.80	40.5062462		-104.5813211		0.00	
5430.00†	15.241	65.977	5274.45	614.48	487.08	1092.82	40.5062749		-104.5812343		0.00	
5530.00†	15.241	65.977	5370.93	627.98	497.78	1116.83	40.5063036		-104.5811476		0.00	
5630.00†	15.241	65.977	5467.41	641.48	508.48	1140.84	40.5063322		-104.5810608		0.00	
5730.00†	15.241	65.977	5563.89	654.98	519.18	1164.85	40.5063609		-104.5809741		0.00	
5830.00†	15.241	65.977	5660.38	668.48	529.88	1188.86	40.5063896		-104.5808874		0.00	
5930.00†	15.241	65.977	5756.86	681.98	540.59	1212.87	40.5064183		-104.5808006		0.00	
6030.00†	15.241	65.977	5853.34	695.49	551.29	1236.89	40.5064470		-104.5807139		0.00	
6130.00†	15.241	65.977	5949.83	708.99	561.99	1260.90	40.5064757		-104.5806271		0.00	
6230.00†	15.241	65.977	6046.31	722.49	572.69	1284.91	40.5065044		-104.5805404		0.00	
6330.00†	15.241	65.977	6142.79	735.99	583.39	1308.92	40.5065331		-104.5804537		0.00	
6430.00†	15.241	65.977	6239.27	749.49	594.10	1332.93	40.5065618		-104.5803669		0.00	
6530.00†	15.241	65.977	6335.76	762.99	604.80	1356.94	40.5065905		-104.5802802		0.00	
6599.30	15.241	65.977	6402.62	772.35	612.21	1373.58	40.5066103		-104.5802201		0.00	KOP
6630.00†	16.495	56.955	6432.15	777.22	616.23	1380.92	40.5066212		-104.5801935		9.00	
6730.00†	22.481	36.479	6526.49	803.01	639.40	1404.24	40.5066841		-104.5801088		9.00	
6830.00†	29.955	25.005	6616.20	843.44	677.47	1426.20	40.5067880		-104.5800284		9.00	
6930.00†	38.048	17.916	6699.06	897.53	729.53	1446.28	40.5069303		-104.5799543		9.00	
7030.00†	46.434	13.037	6773.05	963.93	794.28	1463.96	40.5071075		-104.5798883		9.00	
7130.00†	54.977	9.367	6836.33	1041.01	870.13	1478.83	40.5073152		-104.5798320		9.00	
7230.00†	63.609	6.400	6887.36	1126.89	955.21	1490.51	40.5075484		-104.5797868		9.00	
7330.00†	72.294	3.849	6924.87	1219.43	1047.44	1498.72	40.5078013		-104.5797539		9.00	
7430.00†	81.009	1.535	6947.93	1316.36	1144.53	1503.25	40.5080677		-104.5797339		9.00	
7530.00†	89.737	359.332	6955.99	1415.31	1244.10	1503.99	40.5083410		-104.5797276		9.00	
7533.01	90.000	359.266	6956.00†	1418.29	1247.11	1503.95	40.5083492		-104.5797276		9.00	LP/TPZ
7630.00†	90.000	359.266	6956.00	1514.42	1344.09	1502.71	40.5086154		-104.5797284		0.00	
7730.00†	90.000	359.266	6956.00	1613.54	1444.08	1501.43	40.5088899		-104.5797293		0.00	
7830.00†	90.000	359.266	6956.00	1712.66	1544.07	1500.15	40.5091644		-104.5797302		0.00	
7930.00†	90.000	359.266	6956.00	1811.78	1644.07	1498.87	40.5094389		-104.5797310		0.00	
8030.00†	90.000	359.266	6956.00	1910.90	1744.06	1497.59	40.5097134		-104.5797319		0.00	
8130.00†	90.000	359.266	6956.00	2010.02	1844.05	1496.31	40.5099879		-104.5797328		0.00	
8230.00†	90.000	359.266	6956.00	2109.13	1944.04	1495.03	40.5102624		-104.5797337		0.00	
8330.00†	90.000	359.266	6956.00	2208.25	2044.03	1493.75	40.5105368		-104.5797345		0.00	
8430.00†	90.000	359.266	6956.00	2307.37	2144.03	1492.46	40.5108113		-104.5797354		0.00	



Planned Wellpath Report

BISHOP A05-773 (REV-C.0) PWP



REFERENCE WELLPATH IDENTIFICATION			
Operator	NOBLE ENERGY, INC	Well	BISHOP A05-773
Field	WELD COUNTY (NOBLE NAD 83 GRID)	API/Legal	
Facility	SEC.07-T06N-R64W	Wellbore	BISHOP A05-773 PWB
Slot	SLOT#26 BISHOP A05-773 (1011'FNL & 418'FEL,SEC.07)		

WELLPATH DATA (183 stations) † = interpolated, ‡ = extrapolated station										
MD [ft]	Inclination [°]	Azimuth [°]	TVD [ft]	Vert Sect [ft]	North [ft]	East [ft]	Latitude	Longitude	DLS [°/100ft]	Comments
8530.00†	90.000	359.266	6956.00	2406.49	2244.02	1491.18	40.5110858	-104.5797363	0.00	
8630.00†	90.000	359.266	6956.00	2505.61	2344.01	1489.90	40.5113603	-104.5797372	0.00	
8730.00†	90.000	359.266	6956.00	2604.73	2444.00	1488.62	40.5116348	-104.5797380	0.00	
8830.00†	90.000	359.266	6956.00	2703.84	2543.99	1487.34	40.5119093	-104.5797389	0.00	
8930.00†	90.000	359.266	6956.00	2802.96	2643.98	1486.06	40.5121837	-104.5797398	0.00	
9030.00†	90.000	359.266	6956.00	2902.08	2743.98	1484.78	40.5124582	-104.5797407	0.00	
9130.00†	90.000	359.266	6956.00	3001.20	2843.97	1483.50	40.5127327	-104.5797415	0.00	
9230.00†	90.000	359.266	6956.00	3100.32	2943.96	1482.22	40.5130072	-104.5797424	0.00	
9330.00†	90.000	359.266	6956.00	3199.44	3043.95	1480.94	40.5132817	-104.5797433	0.00	
9430.00†	90.000	359.266	6956.00	3298.55	3143.94	1479.65	40.5135562	-104.5797442	0.00	
9530.00†	90.000	359.266	6956.00	3397.67	3243.94	1478.37	40.5138306	-104.5797450	0.00	
9630.00†	90.000	359.266	6956.00	3496.79	3343.93	1477.09	40.5141051	-104.5797459	0.00	
9730.00†	90.000	359.266	6956.00	3595.91	3443.92	1475.81	40.5143796	-104.5797468	0.00	
9830.00†	90.000	359.266	6956.00	3695.03	3543.91	1474.53	40.5146541	-104.5797477	0.00	
9930.00†	90.000	359.266	6956.00	3794.15	3643.90	1473.25	40.5149286	-104.5797485	0.00	
10030.00†	90.000	359.266	6956.00	3893.26	3743.89	1471.97	40.5152031	-104.5797494	0.00	
10130.00†	90.000	359.266	6956.00	3992.38	3843.89	1470.69	40.5154775	-104.5797503	0.00	
10230.00†	90.000	359.266	6956.00	4091.50	3943.88	1469.41	40.5157520	-104.5797512	0.00	
10330.00†	90.000	359.266	6956.00	4190.62	4043.87	1468.13	40.5160265	-104.5797520	0.00	
10430.00†	90.000	359.266	6956.00	4289.74	4143.86	1466.85	40.5163010	-104.5797529	0.00	
10530.00†	90.000	359.266	6956.00	4388.86	4243.85	1465.56	40.5165755	-104.5797538	0.00	
10630.00†	90.000	359.266	6956.00	4487.97	4343.85	1464.28	40.5168500	-104.5797547	0.00	
10730.00†	90.000	359.266	6956.00	4587.09	4443.84	1463.00	40.5171244	-104.5797555	0.00	
10830.00†	90.000	359.266	6956.00	4686.21	4543.83	1461.72	40.5173989	-104.5797564	0.00	
10930.00†	90.000	359.266	6956.00	4785.33	4643.82	1460.44	40.5176734	-104.5797573	0.00	
11030.00†	90.000	359.266	6956.00	4884.45	4743.81	1459.16	40.5179479	-104.5797582	0.00	
11130.00†	90.000	359.266	6956.00	4983.57	4843.80	1457.88	40.5182224	-104.5797590	0.00	
11230.00†	90.000	359.266	6956.00	5082.68	4943.80	1456.60	40.5184969	-104.5797599	0.00	
11330.00†	90.000	359.266	6956.00	5181.80	5043.79	1455.32	40.5187713	-104.5797608	0.00	
11430.00†	90.000	359.266	6956.00	5280.92	5143.78	1454.04	40.5190458	-104.5797617	0.00	
11530.00†	90.000	359.266	6956.00	5380.04	5243.77	1452.76	40.5193203	-104.5797625	0.00	
11630.00†	90.000	359.266	6956.00	5479.16	5343.76	1451.47	40.5195948	-104.5797634	0.00	
11730.00†	90.000	359.266	6956.00	5578.28	5443.75	1450.19	40.5198693	-104.5797643	0.00	
11830.00†	90.000	359.266	6956.00	5677.39	5543.75	1448.91	40.5201438	-104.5797652	0.00	
11930.00†	90.000	359.266	6956.00	5776.51	5643.74	1447.63	40.5204182	-104.5797660	0.00	
12030.00†	90.000	359.266	6956.00	5875.63	5743.73	1446.35	40.5206927	-104.5797669	0.00	
12130.00†	90.000	359.266	6956.00	5974.75	5843.72	1445.07	40.5209672	-104.5797678	0.00	
12230.00†	90.000	359.266	6956.00	6073.87	5943.71	1443.79	40.5212417	-104.5797687	0.00	
12330.00†	90.000	359.266	6956.00	6172.99	6043.71	1442.51	40.5215162	-104.5797695	0.00	
12430.00†	90.000	359.266	6956.00	6272.10	6143.70	1441.23	40.5217907	-104.5797704	0.00	
12530.00†	90.000	359.266	6956.00	6371.22	6243.69	1439.95	40.5220651	-104.5797713	0.00	
12630.00†	90.000	359.266	6956.00	6470.34	6343.68	1438.67	40.5223396	-104.5797722	0.00	
12730.00†	90.000	359.266	6956.00	6569.46	6443.67	1437.38	40.5226141	-104.5797730	0.00	
12830.00†	90.000	359.266	6956.00	6668.58	6543.66	1436.10	40.5228886	-104.5797739	0.00	
12930.00†	90.000	359.266	6956.00	6767.70	6643.66	1434.82	40.5231631	-104.5797748	0.00	



Planned Wellpath Report

BISHOP A05-773 (REV-C.0) PWP



REFERENCE WELLPATH IDENTIFICATION			
Operator	NOBLE ENERGY, INC	Well	BISHOP A05-773
Field	WELD COUNTY (NOBLE NAD 83 GRID)	API/Legal	
Facility	SEC.07-T06N-R64W	Wellbore	BISHOP A05-773 PWB
Slot	SLOT#26 BISHOP A05-773 (1011'FNL & 418'FEL,SEC.07)		

WELLPATH DATA (183 stations) † = interpolated, ‡ = extrapolated station											
MD [ft]	Inclination [°]	Azimuth [°]	TVD [ft]	Vert Sect [ft]	North [ft]	East [ft]	Latitude	Longitude	DLS [°/100ft]	Comments	
13030.00†	90.000	359.266	6956.00	6866.81	6743.65	1433.54	40.5234376	-104.5797757	0.00		
13130.00†	90.000	359.266	6956.00	6965.93	6843.64	1432.26	40.5237120	-104.5797765	0.00		
13230.00†	90.000	359.266	6956.00	7065.05	6943.63	1430.98	40.5239865	-104.5797774	0.00		
13330.00†	90.000	359.266	6956.00	7164.17	7043.62	1429.70	40.5242610	-104.5797783	0.00		
13430.00†	90.000	359.266	6956.00	7263.29	7143.62	1428.42	40.5245355	-104.5797792	0.00		
13530.00†	90.000	359.266	6956.00	7362.41	7243.61	1427.14	40.5248100	-104.5797800	0.00		
13630.00†	90.000	359.266	6956.00	7461.52	7343.60	1425.86	40.5250844	-104.5797809	0.00		
13730.00†	90.000	359.266	6956.00	7560.64	7443.59	1424.57	40.5253589	-104.5797818	0.00		
13830.00†	90.000	359.266	6956.00	7659.76	7543.58	1423.29	40.5256334	-104.5797827	0.00		
13930.00†	90.000	359.266	6956.00	7758.88	7643.57	1422.01	40.5259079	-104.5797835	0.00		
14030.00†	90.000	359.266	6956.00	7858.00	7743.57	1420.73	40.5261824	-104.5797844	0.00		
14130.00†	90.000	359.266	6956.00	7957.12	7843.56	1419.45	40.5264569	-104.5797853	0.00		
14230.00†	90.000	359.266	6956.00	8056.23	7943.55	1418.17	40.5267313	-104.5797862	0.00		
14330.00†	90.000	359.266	6956.00	8155.35	8043.54	1416.89	40.5270058	-104.5797870	0.00		
14430.00†	90.000	359.266	6956.00	8254.47	8143.53	1415.61	40.5272803	-104.5797879	0.00		
14530.00†	90.000	359.266	6956.00	8353.59	8243.53	1414.33	40.5275548	-104.5797888	0.00		
14630.00†	90.000	359.266	6956.00	8452.71	8343.52	1413.05	40.5278293	-104.5797897	0.00		
14730.00†	90.000	359.266	6956.00	8551.83	8443.51	1411.77	40.5281038	-104.5797905	0.00		
14830.00†	90.000	359.266	6956.00	8650.94	8543.50	1410.48	40.5283782	-104.5797914	0.00		
14930.00†	90.000	359.266	6956.00	8750.06	8643.49	1409.20	40.5286527	-104.5797923	0.00		
15030.00†	90.000	359.266	6956.00	8849.18	8743.48	1407.92	40.5289272	-104.5797932	0.00		
15130.00†	90.000	359.266	6956.00	8948.30	8843.48	1406.64	40.5292017	-104.5797940	0.00		
15230.00†	90.000	359.266	6956.00	9047.42	8943.47	1405.36	40.5294762	-104.5797949	0.00		
15330.00†	90.000	359.266	6956.00	9146.53	9043.46	1404.08	40.5297507	-104.5797958	0.00		
15430.00†	90.000	359.266	6956.00	9245.65	9143.45	1402.80	40.5300251	-104.5797967	0.00		
15530.00†	90.000	359.266	6956.00	9344.77	9243.44	1401.52	40.5302996	-104.5797975	0.00		
15630.00†	90.000	359.266	6956.00	9443.89	9343.43	1400.24	40.5305741	-104.5797984	0.00		
15730.00†	90.000	359.266	6956.00	9543.01	9443.43	1398.96	40.5308486	-104.5797993	0.00		
15830.00†	90.000	359.266	6956.00	9642.13	9543.42	1397.68	40.5311231	-104.5798002	0.00		
15930.00†	90.000	359.266	6956.00	9741.24	9643.41	1396.39	40.5313975	-104.5798010	0.00		
16030.00†	90.000	359.266	6956.00	9840.36	9743.40	1395.11	40.5316720	-104.5798019	0.00		
16130.00†	90.000	359.266	6956.00	9939.48	9843.39	1393.83	40.5319465	-104.5798028	0.00		
16230.00†	90.000	359.266	6956.00	10038.60	9943.39	1392.55	40.5322210	-104.5798037	0.00		
16330.00†	90.000	359.266	6956.00	10137.72	10043.38	1391.27	40.5324955	-104.5798045	0.00		
16430.00†	90.000	359.266	6956.00	10236.84	10143.37	1389.99	40.5327700	-104.5798054	0.00		
16530.00†	90.000	359.266	6956.00	10335.95	10243.36	1388.71	40.5330444	-104.5798063	0.00		
16630.00†	90.000	359.266	6956.00	10435.07	10343.35	1387.43	40.5333189	-104.5798072	0.00		
16730.00†	90.000	359.266	6956.00	10534.19	10443.34	1386.15	40.5335934	-104.5798080	0.00		
16830.00†	90.000	359.266	6956.00	10633.31	10543.34	1384.87	40.5338679	-104.5798089	0.00		
16930.00†	90.000	359.266	6956.00	10732.43	10643.33	1383.59	40.5341424	-104.5798098	0.00		
17030.00†	90.000	359.266	6956.00	10831.55	10743.32	1382.30	40.5344168	-104.5798107	0.00		
17130.00†	90.000	359.266	6956.00	10930.66	10843.31	1381.02	40.5346913	-104.5798115	0.00		
17230.00†	90.000	359.266	6956.00	11029.78	10943.30	1379.74	40.5349658	-104.5798124	0.00		
17330.00†	90.000	359.266	6956.00	11128.90	11043.30	1378.46	40.5352403	-104.5798133	0.00		
17430.00†	90.000	359.266	6956.00	11228.02	11143.29	1377.18	40.5355148	-104.5798142	0.00		

REFERENCE WELLPATH IDENTIFICATION			
Operator	NOBLE ENERGY, INC	Well	BISHOP A05-773
Field	WELD COUNTY (NOBLE NAD 83 GRID)	API/Legal	
Facility	SEC.07-T06N-R64W	Wellbore	BISHOP A05-773 PWB
Slot	SLOT#26 BISHOP A05-773 (1011'FNL & 418'FEL,SEC.07)		

WELLPATH DATA (183 stations) † = interpolated, ‡ = extrapolated station										
MD [ft]	Inclination [°]	Azimuth [°]	TVD [ft]	Vert Sect [ft]	North [ft]	East [ft]	Latitude	Longitude	DLS [°/100ft]	Comments
17530.00†	90.000	359.266	6956.00	11327.14	11243.28	1375.90	40.5357893	-104.5798150	0.00	
17630.00†	90.000	359.266	6956.00	11426.26	11343.27	1374.62	40.5360637	-104.5798159	0.00	
17674.51	90.000	359.266	6956.00‡	11470.37	11387.78	1374.05	40.5361859	-104.5798163	0.00	BHL

HOLE & CASING SECTIONS - Ref Wellbore: BISHOP A05-773 PWB Ref Wellpath: BISHOP A05-773 (REV-C.0) PWP									
String/Diameter	Start MD [ft]	End MD [ft]	Interval [ft]	Start TVD [ft]	End TVD [ft]	Start N/S [ft]	Start E/W [ft]	End N/S [ft]	End E/W [ft]
9.625in Casing Surface	30.00	1950.00	1920.00	30.00	1916.85	0.00	0.00	114.64	257.22

REFERENCE WELLPATH IDENTIFICATION			
Operator	NOBLE ENERGY, INC	Well	BISHOP A05-773
Field	WELD COUNTY (NOBLE NAD 83 GRID)	API/Legal	
Facility	SEC.07-T06N-R64W	Wellbore	BISHOP A05-773 PWB
Slot	SLOT#26 BISHOP A05-773 (1011'FNL & 418'FEL,SEC.07)		

TARGETS									
Name	MD [ft]	TVD [ft]	North [ft]	East [ft]	Grid East [US ft]	Grid North [US ft]	Latitude	Longitude	Shape
OGDP 1 SEC.07-T06N-R64W	N/A	2.00	149.68	-6.55	3254380.72	1428262.61	40.5053800	-104.5852000	polygon
	2D Polygon: dimensions not calculated								
OGDP 1 SEC.08-T06N-R64W	N/A	2.00	149.68	-6.55	3254380.72	1428262.61	40.5053800	-104.5852000	polygon
	2D Polygon: dimensions not calculated								
OGDP1 SEC.05-T06N-R64W	N/A	20.00	168.11	-4258.91	3250128.51	1428281.04	40.5055500	-104.6004900	polygon
	2D Polygon: dimensions not calculated								
OGDP1 SEC.06-T06N-R64W	N/A	20.00	168.11	-4258.91	3250128.51	1428281.04	40.5055500	-104.6004900	polygon
	2D Polygon: dimensions not calculated								
OGDP1 SEC.31-T07N-R64W	N/A	20.00	168.11	-4258.91	3250128.51	1428281.04	40.5055500	-104.6004900	polygon
	2D Polygon: dimensions not calculated								
OGDP1 SEC.32-T07N-R64W	N/A	20.00	168.11	-4258.91	3250128.51	1428281.04	40.5055500	-104.6004900	polygon
	2D Polygon: dimensions not calculated								
BISHOP A05-773 BHL Rev-1 (200'FSL & 993'FWL,SEC.32)	N/A	6914.00	11387.78	1374.05	3255761.27	1439500.31	40.5361859	-104.5798163	point
BISHOP A05-773 LP Rev-1 (200'FSL & 1096'FWL,SEC.05)	N/A	6914.00	1247.11	1503.95	3255891.17	1429360.00	40.5083492	-104.5797276	point
2) BISHOP A05-773 BHL Rev-2 (200'FSL & 993'FWL,SEC.32)	17674.51	6956.00	11387.78	1374.05	3255761.27	1439500.31	40.5361859	-104.5798163	point
1) BISHOP A05-773 LP Rev-2 (200'FSL & 1096'FWL,SEC.05)	7533.01	6956.00	1247.11	1503.95	3255891.17	1429360.00	40.5083492	-104.5797276	point
DP 136 Hardlines (200'FNL/FSL & 300'FEL/FWL)	N/A	7003.00	149.87	-22.68	3254364.58	1428262.81	40.5053810	-104.5852580	polygon
	2D Polygon: dimensions not calculated								

SURVEY PROGRAM - Ref Wellbore: BISHOP A05-773 PWB Ref Wellpath: BISHOP A05-773 (REV-C.0) PWP				
Start MD [ft]	End MD [ft]	Positional Uncertainty Model	Log Name/Comment	Wellbore
30.00	1950.00	OWSG MWD rev2 (MS+IFR1)		BISHOP A05-773 PWB
1950.00	17745.37	OWSG MWD rev2 (MS+IFR1)		BISHOP A05-773 PWB

REFERENCE WELLPATH IDENTIFICATION			
Operator	NOBLE ENERGY, INC	Well	BISHOP A05-773
Field	WELD COUNTY (NOBLE NAD 83 GRID)	API/Legal	
Facility	SEC.07-T06N-R64W	Wellbore	BISHOP A05-773 PWB
Slot	SLOT#26 BISHOP A05-773 (1011'FNL & 418'FEL,SEC.07)		

DESIGN COMMENTS				
MD [ft]	Inclination [°]	Azimuth [°]	TVD [ft]	Comment
30.00	0.000	65.977	30.00	SHL
500.00	0.000	65.977	500.00	End of Tangent
1262.06	15.241	65.977	1253.11	Build (XS)
6599.30	15.241	65.977	6402.62	KOP
7533.01	90.000	359.266	6956.00	LP/TPZ
17674.51	90.000	359.266	6956.00	BHL

REFERENCE WELLPATH IDENTIFICATION			
Operator	NOBLE ENERGY, INC	Well	BISHOP A05-773
Field	WELD COUNTY (NOBLE NAD 83 GRID)	API/Legal	
Facility	SEC.07-T06N-R64W	Wellbore	BISHOP A05-773 PWB
Slot	SLOT#26 BISHOP A05-773 (1011'FNL & 418'FEL,SEC.07)		

REPORT SETUP INFORMATION			
Projection System	NAD83 / Lambert Colorado SP, Northern Zone (501), US feet	Software System	WellArchitect® 6.0
North Reference	Grid	User	Martsam01
Scale	0.999967	Report Generated	10/6/2023 at 5:44:17 PM
Convergence at slot	0.59° East	Database	WA_Denver

WELLPATH LOCATION						
	Local coordinates		Grid coordinates		Geographic coordinates	
	North[ft]	East[ft]	Easting[US ft]	Northing[US ft]	Latitude	Longitude
Slot Location	-149.68	6.55	3254387.27	1428112.94	40°30'17.8884"N	104°35'6.6552"W
Facility Reference Pt			3254380.72	1428262.61	40°30'19.3680"N	104°35'6.7200"W
Field Reference Pt			3000000.00	4454105.15	48°46'34.3150"N	105°30'0.0000"W

WELLPATH DATUM			
Calculation method	Minimum Curvature	RIG (4744'GL+30'KB@4774'RKB) (RKB) to Facility Vertical Datum	4774.00ft
Horizontal Reference Pt	Slot	RIG (4744'GL+30'KB@4774'RKB) (RKB) to Mean Sea Level	4774.00ft
Vertical Reference Pt	RIG (4744'GL+30'KB@4774'RKB) (RKB)	RIG (4744'GL+30'KB@4774'RKB) (RKB) to Ground Level at Slot (SLOT#26 BISHOP A05-773 (1011'FNL & 418'FEL,SEC.07))	4774.00ft
MD Reference Pt	RIG (4744'GL+30'KB@4774'RKB) (RKB)		
Field Vertical Reference	Mean Sea Level		

POSITIONAL UNCERTAINTY CALCULATION SETTINGS					
Ellipse Confidence Limit	3.50 Std Dev	Ellipse Start MD	30.00ft	Surface Position Uncertainty	included
Declination	7.38° East of TN	Dip Angle	66.68°	Mag Field Strength	51663 nT
Slot Surface Uncertainty @1SD		Horizontal	0.100ft	Vertical	1.000ft
Facility Surface Uncertainty @1SD		Horizontal	8.200ft	Vertical	3.000ft
Positional Uncertainty values in the WELLPATH DATA table are the projection of the ellipsoid of uncertainty onto the vertical and horizontal planes					

REFERENCE WELLPATH IDENTIFICATION			
Operator	NOBLE ENERGY, INC	Well	BISHOP A05-773
Field	WELD COUNTY (NOBLE NAD 83 GRID)	API/Legal	
Facility	SEC.07-T06N-R64W	Wellbore	BISHOP A05-773 PWB
Slot	SLOT#26 BISHOP A05-773 (1011'FNL & 418'FEL,SEC.07)		

PROXIMITY-SCAN RULE			
Rule Name	SPE WPTS Stop Drilling HSE Risk (2017)	Rule Based On	Ratio
Plane of Rule	Closest Approach	Threshold Value	1.00
Include Casing & Hole Size	yes	Apply Cone of Safety	no

HOLE & CASING SECTIONS - Ref Wellbore: BISHOP A05-773 PWB Ref Wellpath: BISHOP A05-773 (REV-C.0) PWP									
String/Diameter	Start MD [ft]	End MD [ft]	Interval [ft]	Start TVD [ft]	End TVD [ft]	Start N/S [ft]	Start E/W [ft]	End N/S [ft]	End E/W [ft]
9.625in Casing Surface	30.00	1950.00	1920.00	30.00	1916.85	0.00	0.00	114.64	257.22

SURVEY PROGRAM - Ref Wellbore: BISHOP A05-773 PWB Ref Wellpath: BISHOP A05-773 (REV-C.0) PWP				
Start MD [ft]	End MD [ft]	Positional Uncertainty Model	Log Name/Comment	Wellbore
30.00	1950.00	OWSG MWD rev2 (MS+IFR1)		BISHOP A05-773 PWB
1950.00	17745.37	OWSG MWD rev2 (MS+IFR1)		BISHOP A05-773 PWB

REFERENCE WELLPATH IDENTIFICATION			
Operator	NOBLE ENERGY, INC	Well	BISHOP A05-773
Field	WELD COUNTY (NOBLE NAD 83 GRID)	API/Legal	
Facility	SEC.07-T06N-R64W	Wellbore	BISHOP A05-773 PWB
Slot	SLOT#26 BISHOP A05-773 (1011'FNL & 418'FEL,SEC.07)		

CALCULATION RANGE & CUTOFF		
From: 30.00ft MD	To: 17674.51ft MD	C-C Cutoff: (none)

OFFSET WELL CLEARANCE SUMMARY (91 Offset Wellpaths selected) Ratios are calculated in Closest Approach plane												
Offset Facility	Offset Slot	Offset Well	Offset Wellbore	Offset Wellpath	Wellbore Status	C-C Clearance Distance			Rule Separation Ratio			
						Ref MD [ft]	Min C-C Clear Dist [ft]	Diverging from MD [ft]	Ref MD of Min Ratio [ft]	Min Ratio	Min Ratio Dvrg from [ft]	Rule Status
SEC.32-T07N-R64W	SLOT#09 LEY #1-32 (05-123-12561)	LEY #1-32 (05-123-12561)	LEY #1-32 AWB	LEY #1-32 AWP	Drilling	17186.57	387.76	17186.57	17186.56	0.04	17186.56	FAIL
SEC.05-T06N-R64W	SLOT#17 GRADY DYER #14-5 (05-123-21960)	GRADY DYER #14-5 (05-123-21960)	GRADY DYER #14-5 AWB	GRADY DYER #14-5 AWP	Drilling	8004.73	600.16	8004.73	8004.73	0.07	8004.73	FAIL
SEC.05-T06N-R64W	SLOT#04 GRADY DYER #23-5 (05-123-21959)	GRADY DYER #23-5 (05-123-21959)	GRADY DYER #23-5 AWB	GRADY DYER #23-5 AWP	Drilling	9156.34	754.03	9156.34	9156.35	0.09	9156.35	FAIL
SEC.32-T07N-R64W	SLOT#08 LAW #1 (05-123-12001)	LAW #1 (05-123-12001)	LAW #1 AWB	LAW #1 AWP	Drilling	14574.90	898.53	14574.90	14574.90	0.11	14574.90	FAIL
SEC.08-T06N-R64W	SLOT#15 GRADY #1 (05-123-14810)	GRADY #1 (05-123-14810)	GRADY #1 AWB	GRADY #1 AWP	Drilling	2810.92	1286.23	2810.92	6652.49	0.21	6652.49	FAIL
SEC.08-T06N-R64W	SLOT#11 FRANCIS #22-8 (05-123-22515)	FRANCIS #22-8 (05-123-22515)	FRANCIS #22-8 AWB	FRANCIS #22-8 AWP	Drilling	6609.63	1924.87	6609.63	6789.98	0.24	6789.98	FAIL
SEC.07-T06N-R64W	SLOT#37 DYER #42-7 (05-123-13959)	DYER #42-7 (05-123-13959)	DYER #42-7 AWB	DYER #42-7 AWP (05-123-13959)	Drilling	30.00	1112.34	500.00	6715.59	0.32	6715.59	FAIL
SEC.32-T07N-R64W	SLOT#07 WESTERMAN #32-11 (05-123-26380)	WESTERMAN #32-11 (05-123-26380)	WESTERMAN #32-11 AWB	WESTERMAN #32-11 AWP	Drilling	17358.48	3314.32	17358.48	17358.91	0.39	17358.91	FAIL
SEC.07-T06N-R64W	SLOT#41 Ehrlich #32-7 (05-123-20196)	Ehrlich #32-7 (05-123-20196)	Ehrlich #32-7 AWB	Ehrlich #32-7 AWP	Drilling	30.00	1790.29	500.00	6843.74	0.41	6843.74	FAIL
SEC.05-T06N-R64W	SLOT#03 OWL CREEK #7 (05-123-11929)	OWL CREEK #7 (05-123-11929)	OWL CREEK #7 AWB	OWL CREEK #7 AWP	Drilling	9401.11	3571.31	9401.11	9401.24	0.42	9401.24	FAIL
SEC.05-T06N-R64W	SLOT#12 OWL CREEK #7-5 (05-123-27175)	OWL CREEK #7-5 (05-123-27175)	OWL CREEK #7-5 AWB	OWL CREEK #7-5 AWP	Drilling	8023.90	3607.09	8023.90	8023.97	0.42	8023.97	FAIL
SEC.32-T07N-R64W	SLOT#11 SCOTT #32-14 (05-123-26379)	SCOTT #32-14 (05-123-26379)	SCOTT #32-14 AWB	SCOTT #32-14 AWP	Drilling	16053.31	3708.83	16053.31	16053.77	0.43	16053.77	FAIL
SEC.08-T06N-R64W	SLOT#08 UHRICH #33-8 (05-123-20467)	UHRICH #33-8 (05-123-20467)	UHRICH #33-8 AWB	UHRICH #33-8 AWP	Drilling	6630.00	3867.75	6630.00	6987.76	0.47	6987.76	FAIL
SEC.07-T06N-R64W	SLOT#35 CARLSON #33-7 (05-123-19548)	CARLSON #33-7 (05-123-19548)	CARLSON #33-7 AWB	CARLSON #33-7 AWP	Drilling	130.00	2615.81	500.00	6874.08	0.50	6874.08	FAIL
SEC.07-T06N-R64W	SLOT#30 KREPS #21-7 (05-123-20207)	KREPS #21-7 (05-123-20207)	KREPS #21-7 AWB	KREPS #21-7 AWP	Drilling	30.00	2947.61	500.00	7324.62	0.53	7324.62	FAIL
SEC.08-T06N-R64W	SLOT#04 UHRICH #43-8 (05-123-21656)	UHRICH #43-8 (05-123-21656)	UHRICH #43-8 AWB	UHRICH #43-8 AWP	Drilling	6730.00	4890.54	6730.00	7123.16	0.59	7123.16	FAIL
SEC.05-T06N-R64W	SLOT#07 ROUSE-USX A #5-19 (05-123-24697)	ROUSE-USX A #5-19 (05-123-24697)	ROUSE-USX A #5-19 AWB	ROUSE-USX A #5-19 AWP	Drilling	11303.58	175.31	11303.58	11305.61	0.60	11305.61	FAIL
SEC.08-T06N-R64W	SLOT#16 UHRICH #34-8 (05-123-14446)	UHRICH #34-8 (05-123-14446)	UHRICH #34-8 AWB	UHRICH #34-8 AWP	Drilling	6616.26	5014.11	6616.26	7014.78	0.62	7014.78	FAIL
SEC.07-T06N-R64W	SLOT#38 EHRLICH #22-7 (05-123-14184)	EHRLICH #22-7 (05-123-14184)	EHRLICH #22-7 AWB	EHRLICH #22-7 AWP	Drilling	130.00	3492.49	500.00	7079.98	0.63	7079.98	FAIL
SEC.07-T06N-R64W	SLOT#32 EHRLICH #3 (05-123-12737)	EHRLICH #3 (05-123-12737)	EHRLICH #3 AWB	EHRLICH #3 AWP	Drilling	130.00	3626.25	500.00	7019.44	0.64	7019.44	FAIL
SEC.07-T06N-R64W	SLOT#34 KREPS #11-7 (05-123-14166)	KREPS #11-7 (05-123-14166)	KREPS #11-7 AWB	KREPS #11-7 AWP	Drilling	30.00	4075.86	500.00	7388.99	0.66	7388.99	FAIL
SEC.07-T06N-R64W	SLOT#42 EHRLICH #4 (05-123-12738)	EHRLICH #4 (05-123-12738)	EHRLICH #4 AWB	EHRLICH #4 AWP	Drilling	30.00	4100.37	500.00	7210.25	0.69	7210.25	FAIL
SEC.32-T07N-R64W	SLOT#06 MCCRORY #1 (05-123-07160)	MCCRORY #1 (05-123-07160)	MCCRORY #1 AWB	MCCRORY #1 AWP	Drilling	16467.02	4511.09	16467.02	16477.26	1.17	16477.26	PASS
SEC.32-T07N-R64W	SLOT#10 CECIL #32-32 (05-123-23810)	CECIL #32-32 (05-123-23810)	CECIL #32-32 AWB	CECIL #32-32 AWP	Drilling	14460.57	213.83	14460.57	14453.07	1.57	14453.07	PASS
SEC.07-T06N-R64W	SLOT#27 BISHOP A05-764 (1011'FNL & 396'FEL,SEC.07)	BISHOP A05-764	BISHOP A05-764 PWB	BISHOP A05-764 (REV-C.0) PWP	Planned	30.00	22.53	17630.00	1250.82	2.10	17674.51	PASS

REFERENCE WELLPATH IDENTIFICATION			
Operator	NOBLE ENERGY, INC	Well	BISHOP A05-773
Field	WELD COUNTY (NOBLE NAD 83 GRID)	API/Legal	
Facility	SEC.07-T06N-R64W	Wellbore	BISHOP A05-773 PWB
Slot	SLOT#26 BISHOP A05-773 (1011'FNL & 418'FEL,SEC.07)		

CALCULATION RANGE & CUTOFF		
From: 30.00ft MD	To: 17674.51ft MD	C-C Cutoff: (none)

OFFSET WELL CLEARANCE SUMMARY (91 Offset Wellpaths selected) Ratios are calculated in Closest Approach plane												
Offset Facility	Offset Slot	Offset Well	Offset Wellbore	Offset Wellpath	Wellbore Status	C-C Clearance Distance			Rule Separation Ratio			
						Ref MD [ft]	Min C-C Clear Dist [ft]	Diverging from MD [ft]	Ref MD of Min Ratio [ft]	Min Ratio	Min Ratio Dvrg from [ft]	Rule Status
SEC.05-T06N-R64W	SLOT#15 ROUSE USX A #05-05 (05-123-29403)	ROUSE USX A #05-05 (05-123-29403)	ROUSE USX A #05-05 AWB	ROUSE USX A #05-05 AWP	Drilling	10469.31	581.59	10469.31	10467.80	2.11	10467.80	PASS
SEC.07-T06N-R64W	SLOT#01 BISHOP A08-685 (860'FNL & 439'FEL,SEC.07)	BISHOP A08-685	BISHOP A08-685 PWB	BISHOP A08-685 (REV-C.0) PWP	Planned	7010.22	126.87	7010.22	7040.59	2.22	7040.59	PASS
SEC.08-T06N-R64W	SLOT#07 FRANCIS #11-8 (05-123-22517)	FRANCIS #11-8 (05-123-22517)	FRANCIS #11-8 AWB	FRANCIS #11-8 AWP	Drilling	4856.01	143.99	4856.01	4885.40	2.48	4885.40	PASS
SEC.07-T06N-R64W	SLOT#25 BISHOP A05-783 (1010'FNL & 441'FEL,SEC.07)	BISHOP A05-783	BISHOP A05-783 PWB	BISHOP A05-783 (REV-C.0) PWP	Planned	30.00	22.53	17674.51	930.00	2.49	17674.51	PASS
SEC.05-T06N-R64W	SLOT#13 DYER USX A #05-14 (05-123-33405)	DYER USX A #05-14 (05-123-33405)	DYER USX A #05-14 AWB	DYER USX A #05-14 AWP	Drilling	8004.73	904.20	8004.73	8009.68	3.06	8009.68	PASS
SEC.05-T06N-R64W	SLOT#02 ROUSE USX A #05-03 (05-123-30349)	ROUSE USX A #05-03 (05-123-30349)	ROUSE USX A #05-03 AWB	ROUSE USX A #05-03 AWP	Drilling	11796.58	1055.08	11796.58	11817.33	3.31	11817.33	PASS
SEC.07-T06N-R64W	SLOT#28 BISHOP A05-755 (1012'FNL & 373'FEL,SEC.07)	BISHOP A05-755	BISHOP A05-755 PWB	BISHOP A05-755 (REV-C.0) PWP	Planned	30.00	45.05	12630.00	1291.06	4.06	17674.51	PASS
SEC.05-T06N-R64W	SLOT#06 ROUSE USX A #05-04 (05-123-29404)	ROUSE USX A #05-04 (05-123-29404)	ROUSE USX A #05-04 AWB	ROUSE USX A #05-04 AWP	Drilling	11816.99	469.22	11816.99	11805.79	4.51	11805.79	PASS
SEC.07-T06N-R64W	SLOT#24 BISHOP A06-712 (1010'FNL & 463'FEL,SEC.07)	BISHOP A06-712	BISHOP A06-712 PWB	BISHOP A06-712 (REV-C.0) PWP	Planned	30.00	45.05	17674.51	17674.51	5.23	17674.51	PASS
SEC.07-T06N-R64W	SLOT#04 BISHOP A08-655 (862'FNL & 372'FEL,SEC.07)	BISHOP A08-655	BISHOP A08-655 PWB	BISHOP A08-655 (REV-C.0) PWP	Planned	1289.39	72.75	6630.00	1313.74	5.58	6830.00	PASS
SEC.32-T07N-R64W	SLOT#17 CECIL #32-34 (05-123-23809)	CECIL #32-34 (05-123-23809)	CECIL #32-34 AWB	CECIL #32-34 AWP	Drilling	13226.56	689.82	13226.56	13293.35	5.71	13293.35	PASS
SEC.05-T06N-R64W	SLOT#08 DYER #13-5 (05-123-21187)	DYER #13-5 (05-123-21187)	DYER #13-5 AWB	DYER #13-5 AWP	Drilling	9480.72	522.38	9480.72	9470.49	6.34	9470.49	PASS
SEC.07-T06N-R64W	SLOT#03 BISHOP A08-665 (861'FNL & 394'FEL,SEC.07)	BISHOP A08-665	BISHOP A08-665 PWB	BISHOP A08-665 (REV-C.0) PWP	Planned	1245.82	97.98	6730.00	1298.06	7.72	6830.00	PASS
SEC.07-T06N-R64W	SLOT#23 BISHOP A06-722 (1009'FNL & 486'FEL,SEC.07)	BISHOP A06-722	BISHOP A06-722 PWB	BISHOP A06-722 (REV-C.0) PWP	Planned	30.00	67.58	17674.51	17674.51	7.85	17674.51	PASS
SEC.05-T06N-R64W	SLOT#14 ROUSE USX A #05-07 (05-123-29422)	ROUSE USX A #05-07 (05-123-29422)	ROUSE USX A #05-07 AWB	ROUSE USX A #05-07 AWP	Drilling	10466.17	2248.04	10466.17	10534.64	7.87	10534.64	PASS
SEC.05-T06N-R64W	SLOT#05 ROUSE USX A #05-02 (05-123-29636)	ROUSE USX A #05-02 (05-123-29636)	ROUSE USX A #05-02 AWB	ROUSE USX A #05-02 AWP	Drilling	11810.32	2330.14	11810.32	11903.36	8.05	11903.36	PASS
SEC.08-T06N-R64W	SLOT#06 ERICKSON A #8-2 (05-123-23853)	ERICKSON A #8-2 (05-123-23853)	ERICKSON A #8-2 AWB	ERICKSON A #8-2 AWP	Drilling	7103.69	2261.09	7103.69	7260.92	8.83	7260.92	PASS
SEC.07-T06N-R64W	SLOT#22 BISHOP A06-731 (1009'FNL & 508'FEL,SEC.07)	BISHOP A06-731	BISHOP A06-731 PWB	BISHOP A06-731 (REV-B.0) PWP	Planned	30.00	90.10	17674.51	17674.51	10.40	17674.51	PASS
SEC.07-T06N-R64W	SLOT#02 BISHOP A08-675 (861'FNL & 417'FEL,SEC.07)	BISHOP A08-675	BISHOP A08-675 PWB	BISHOP A08-675 (REV-C.0) PWP	Planned	1092.07	137.17	6830.00	1300.43	11.41	6930.00	PASS
SEC.08-T06N-R64W	SLOT#03 FRANCIS #21-8 (05-123-27380)	FRANCIS #21-8 (05-123-27380)	FRANCIS #21-8 AWB	FRANCIS #21-8 AWP	Drilling	6993.48	823.84	6993.48	7062.28	11.77	7062.28	PASS
SEC.05-T06N-R64W	SLOT#11 ROUSE USX A #05-06 (05-123-29405)	ROUSE USX A #05-06 (05-123-29405)	ROUSE USX A #05-06 AWB	ROUSE USX A #05-06 AWP	Drilling	10445.15	1087.65	10445.15	10596.83	11.89	10596.83	PASS
SEC.08-T06N-R64W	SLOT#14 ERICKSON A #8-7 (05-123-23750)	ERICKSON A #8-7 (05-123-23750)	ERICKSON A #8-7 AWB	ERICKSON A #8-7 AWP	Drilling	6768.72	2923.80	6768.72	7073.16	11.96	7073.16	PASS
SEC.08-T06N-R64W	SLOT#01 ERICKSON A #8-17 (05-123-23751)	ERICKSON A #8-17 (05-123-23751)	ERICKSON A #8-17 AWB	ERICKSON A #8-17 AWP	Drilling	6948.10	3313.55	6948.10	7209.96	12.98	7209.96	PASS
SEC.07-T06N-R64W	SLOT#21 BISHOP A06-740 (1008'FNL & 531'FEL,SEC.07)	BISHOP A06-740	BISHOP A06-740 PWB	BISHOP A06-740 (REV-C.0) PWP	Planned	30.00	112.63	17674.51	17674.51	13.04	17674.51	PASS
SEC.32-T07N-R64W	SLOT#18 SCOTT #32-13 (05-123-25475)	SCOTT #32-13 (05-123-25475)	SCOTT #32-13 AWB	SCOTT #32-13 AWP	Drilling	15716.00	2022.13	15716.00	15998.64	13.25	15998.64	PASS

REFERENCE WELLPATH IDENTIFICATION			
Operator	NOBLE ENERGY, INC	Well	BISHOP A05-773
Field	WELD COUNTY (NOBLE NAD 83 GRID)	API/Legal	
Facility	SEC.07-T06N-R64W	Wellbore	BISHOP A05-773 PWB
Slot	SLOT#26 BISHOP A05-773 (1011'FNL & 418'FEL,SEC.07)		

CALCULATION RANGE & CUTOFF		
From: 30.00ft MD	To: 17674.51ft MD	C-C Cutoff: (none)

OFFSET WELL CLEARANCE SUMMARY (91 Offset Wellpaths selected) Ratios are calculated in Closest Approach plane												
Offset Facility	Offset Slot	Offset Well	Offset Wellbore	Offset Wellpath	Wellbore Status	C-C Clearance Distance			Rule Separation Ratio			
						Ref MD [ft]	Min C-C Clear Dist [ft]	Diverging from MD [ft]	Ref MD of Min Ratio [ft]	Min Ratio	Min Ratio Dvrg from [ft]	Rule Status
SEC.05-T06N-R64W	SLOT#10 ROUSE USX A #05-08 (05-123-29423)	ROUSE USX A #05-08 (05-123-29423)	ROUSE USX A #05-08 AWB	ROUSE USX A #05-08 AWP	Drilling	10478.41	3571.27	10478.41	10659.29	13.32	10659.29	PASS
SEC.32-T07N-R64W	SLOT#13 NC Farms #10-32 (05-123-34785)	NC Farms #10-32 (05-123-34785)	NC Farms #10-32 AWB	NC Farms #10-32 AWP	Drilling	14708.69	2140.01	14708.69	14886.47	14.14	14886.47	PASS
SEC.05-T06N-R64W	SLOT#01 ROUSE USX A #05-01 (05-123-29487)	ROUSE USX A #05-01 (05-123-29487)	ROUSE USX A #05-01 AWB	ROUSE USX A #05-01 AWP	Drilling	12157.22	3724.41	12157.22	12440.88	14.33	12440.88	PASS
SEC.07-T06N-R64W	SLOT#20 BRASKALAND A06-756 (642'FNL & 320'FWL,SEC.07)	BRASKALAND A06-756	BRASKALAND A06-756 PWB	BRASKALAND A06-756 (REV-C.0) PWP	Planned	17664.22	3667.37	17664.22	17674.51	15.78	17674.51	PASS
SEC.07-T06N-R64W	SLOT#16 BISHOP A18-715 (860'FNL & 462'FEL,SEC.07)	BISHOP A18-715	BISHOP A18-715 PWB	BISHOP A18-715 (REV-C.0) PWP	Planned	617.81	156.42	6730.00	1007.08	17.27	7030.00	PASS
SEC.32-T07N-R64W	SLOT#14 NC Farms #15-32 (05-123-34789)	NC Farms #15-32 (05-123-34789)	NC Farms #15-32 AWB	NC Farms #15-32 AWP	Drilling	13281.96	2233.05	13281.96	13662.68	17.92	13662.68	PASS
SEC.07-T06N-R64W	SLOT#19 BRASKALAND A06-765 (665'FNL & 319'FWL,SEC.07)	BRASKALAND A06-765	BRASKALAND A06-765 PWB	BRASKALAND A06-765 (REV-C.0) PWP	Planned	30.00	4267.46	17674.51	17674.51	18.38	17674.51	PASS
SEC.07-T06N-R64W	SLOT#15 BISHOP A18-724 (859'FNL & 484'FEL,SEC.07)	BISHOP A18-724	BISHOP A18-724 PWB	BISHOP A18-724 (REV-C.0) PWP	Planned	30.00	164.60	6599.30	830.00	19.96	7230.00	PASS
SEC.07-T06N-R64W	SLOT#18 BRASKALAND A06-773 (687'FNL & 319'FWL,SEC.07)	BRASKALAND A06-773	BRASKALAND A06-773 PWB	BRASKALAND A06-773 (REV-C.0) PWP	Planned	30.00	4266.19	17630.00	17674.51	21.06	17674.51	PASS
SEC.07-T06N-R64W	SLOT#14 BISHOP A18-733 (859'FNL & 507'FEL,SEC.07)	BISHOP A18-733	BISHOP A18-733 PWB	BISHOP A18-733 (REV-C.0) PWP	Planned	30.00	174.84	7630.00	830.00	21.37	7830.00	PASS
SEC.32-T07N-R64W	SLOT#16 NC Farms #20-32 (05-123-34793)	NC Farms #20-32 (05-123-34793)	NC Farms #20-32 AWB	NC Farms #20-32 AWP	Drilling	13928.30	2914.89	13928.30	14460.93	21.41	14460.93	PASS
SEC.07-T06N-R64W	SLOT#13 BISHOP A18-742 (858'FNL & 529'FEL,SEC.07)	BISHOP A18-742	BISHOP A18-742 PWB	BISHOP A18-742 (REV-C.0) PWP	Planned	30.00	187.54	7730.00	830.00	22.97	8230.00	PASS
SEC.32-T07N-R64W	SLOT#15 NC Farms #9-32 (05-123-34790)	NC Farms #9-32 (05-123-34790)	NC Farms #9-32 AWB	NC Farms #9-32 AWP	Drilling	14570.76	3538.92	14570.76	15292.68	23.53	15292.68	PASS
SEC.07-T06N-R64W	SLOT#17 BRASKALAND A06-782 (710'FNL & 319'FWL,SEC.07)	BRASKALAND A06-782	BRASKALAND A06-782 PWB	BRASKALAND A06-782 (REV-C.0) PWP	Planned	30.00	4265.07	17630.00	17674.51	23.71	17674.51	PASS
SEC.05-T06N-R64W	SLOT#16 ERICKSON #5-43 (05-123-18513)	ERICKSON #5-43 (05-123-18513)	ERICKSON #5-43 AWB	ERICKSON #5-43 AWP	Drilling	7963.04	2048.24	7963.04	8324.94	27.67	8324.94	PASS
SEC.32-T07N-R64W	SLOT#12 NC Farms #16-32 (05-123-34782)	NC Farms #16-32 (05-123-34782)	NC Farms #16-32 AWB	NC Farms #16-32 AWP	Drilling	13303.02	3561.32	13303.02	14201.35	27.88	14201.35	PASS
SEC.05-T06N-R64W	SLOT#09 ROUSE-USX A #5-17 (05-123-24696)	ROUSE-USX A #5-17 (05-123-24696)	ROUSE-USX A #5-17 AWB	ROUSE-USX A #5-17 AWP	Drilling	11279.99	3108.94	11279.99	12121.79	30.03	12121.79	PASS
SEC.07-T06N-R64W	SLOT#29 DYER #41-7 (05-123-20669)	DYER #41-7 (05-123-20669)	DYER #41-7 AWB	DYER #41-7 AWP	Drilling	30.00	414.97	30.00	2030.00	31.40	6730.00	PASS
SEC.07-T06N-R64W	SLOT#05 CARLSON A08-645 (1424'FSL & 919'FEL,SEC.07)	CARLSON A08-645	CARLSON A08-645 PWB	CARLSON A08-645 (REV-C.0) PWP	Planned	6630.00	2574.48	6630.00	6740.11	38.06	6740.11	PASS
SEC.08-T06N-R64W	SLOT#09 MILE HIGH SHEEP #8-32 (05-123-23451)	MILE HIGH SHEEP #8-32 (05-123-23451)	MILE HIGH SHEEP #8-32 AWB	MILE HIGH SHEEP #8-32 AWP	Drilling	30.00	2616.98	530.00	6691.33	45.89	6691.33	PASS
SEC.08-T06N-R64W	SLOT#05 FRANCEN #23-8 (05-123-21958)	FRANCEN #23-8 (05-123-21958)	FRANCEN #23-8 AWB	FRANCEN #23-8 AWP	Drilling	4890.48	3156.83	4890.48	6797.37	46.47	6797.37	PASS
SEC.07-T06N-R64W	SLOT#06 CARLSON A08-635 (1423'FSL & 882'FEL,SEC.07)	CARLSON A08-635	CARLSON A08-635 PWB	CARLSON A08-635 (REV-C.0) PWP	Planned	30.00	2875.79	6630.00	6801.04	48.57	6801.04	PASS
SEC.08-T06N-R64W	SLOT#02 ERICKSON A #8-1 (05-123-23826)	ERICKSON A #8-1 (05-123-23826)	ERICKSON A #8-1 AWB	ERICKSON A #8-1 AWP	Drilling	7171.47	3499.54	7171.47	7384.24	48.70	7384.24	PASS
SEC.07-T06N-R64W	SLOT#33 KREPS #1 (05-123-12736)	KREPS #1 (05-123-12736)	KREPS #1 AWB	KREPS #1 AWP	Drilling	512.24	1517.90	512.24	7382.39	52.22	7382.39	PASS
SEC.08-T06N-R64W	SLOT#18 MILE-HI SHEEP #8-35 (05-123-24252)	MILE-HI SHEEP #8-35 (05-123-24252)	MILE-HI SHEEP #8-35 AWB	MILE-HI SHEEP #8-35 AWP	Drilling	1902.88	3261.78	1902.88	6716.05	52.32	6716.05	PASS

REFERENCE WELLPATH IDENTIFICATION			
Operator	NOBLE ENERGY, INC	Well	BISHOP A05-773
Field	WELD COUNTY (NOBLE NAD 83 GRID)	API/Legal	
Facility	SEC.07-T06N-R64W	Wellbore	BISHOP A05-773 PWB
Slot	SLOT#26 BISHOP A05-773 (1011'FNL & 418'FEL,SEC.07)		

CALCULATION RANGE & CUTOFF		
From: 30.00ft MD	To: 17674.51ft MD	C-C Cutoff: (none)

OFFSET WELL CLEARANCE SUMMARY (91 Offset Wellpaths selected) Ratios are calculated in Closest Approach plane												
Offset Facility	Offset Slot	Offset Well	Offset Wellbore	Offset Wellpath	Wellbore Status	C-C Clearance Distance			Rule Separation Ratio			
						Ref MD [ft]	Min C-C Clear Dist [ft]	Diverging from MD [ft]	Ref MD of Min Ratio [ft]	Min Ratio	Min Ratio Dvrg from [ft]	Rule Status
SEC.07-T06N-R64W	SLOT#07 CARLSON A08-625 (1423'FSL & 844'FEL,SEC.07)	CARLSON A08-625	CARLSON A08-625 PWB	CARLSON A08-625 (REV-C.0) PWP	Planned	30.00	2870.15	6599.30	6843.19	58.78	6843.19	PASS
SEC.08-T06N-R64W	SLOT#10 ERICKSON A #8-8 (05-123-23752)	ERICKSON A #8-8 (05-123-23752)	ERICKSON A #8-8 AWB	ERICKSON A #8-8 AWP	Drilling	6864.39	4159.38	6864.39	7386.93	58.99	7386.93	PASS
SEC.08-T06N-R64W	SLOT#17 MILE HIGH SHEEP #8-33 (05-123-23128)	MILE HIGH SHEEP #8-33 (05-123-23128)	MILE HIGH SHEEP #8-33 AWB	MILE HIGH SHEEP #8-33 AWP	Drilling	249.47	3543.09	500.00	6751.05	59.57	6751.05	PASS
SEC.07-T06N-R64W	SLOT#31 ROY CARLSON #43-7 (05-123-21867)	ROY CARLSON #43-7 (05-123-21867)	ROY CARLSON #43-7 AWB	ROY CARLSON #43-7 AWP	Drilling	30.00	2296.74	30.00	6826.17	63.91	6826.17	PASS
SEC.07-T06N-R64W	SLOT#12 BRASKALAND A18-755 (800'FNL & 319'FWL,SEC.07)	BRASKALAND A18-755	BRASKALAND A18-755 PWB	BRASKALAND A18-755 (REV-C.0) PWP	Planned	6181.71	3623.86	6181.71	6340.55	65.15	8130.00	PASS
SEC.08-T06N-R64W	SLOT#13 FRANCEN #24-8 (05-123-14232)	FRANCEN #24-8 (05-123-14232)	FRANCEN #24-8 AWB	FRANCEN #24-8 AWP	Drilling	3900.93	4493.55	4930.00	6823.74	66.40	6823.74	PASS
SEC.07-T06N-R64W	SLOT#08 CARLSON A08-615 (1422'FSL & 807'FEL,SEC.07)	CARLSON A08-615	CARLSON A08-615 PWB	CARLSON A08-615 (REV-C.0) PWP	Planned	30.00	2864.57	500.00	6890.43	68.12	6890.43	PASS
SEC.07-T06N-R64W	SLOT#11 BRASKALAND A18-764 (777'FNL & 319'FWL,SEC.07)	BRASKALAND A18-764	BRASKALAND A18-764 PWB	BRASKALAND A18-764 (REV-C.0) PWP	Planned	6101.73	4202.98	6101.73	8863.55	76.12	8863.55	PASS
SEC.08-T06N-R64W	SLOT#12 UHRICH #44-8 (05-123-14418)	UHRICH #44-8 (05-123-14418)	UHRICH #44-8 AWB	UHRICH #44-8 AWP	Drilling	6663.67	5763.03	6663.67	6993.80	83.09	6993.80	PASS
SEC.07-T06N-R64W	SLOT#39 CARLSON #44-7 (05-123-14171)	CARLSON #44-7 (05-123-14171)	CARLSON #44-7 AWB	CARLSON #44-7 AWP (05-123-14171)	Drilling	30.00	3515.26	30.00	6909.39	85.37	6909.39	PASS
SEC.07-T06N-R64W	SLOT#10 BRASKALAND A18-773 (755'FNL & 319'FWL,SEC.07)	BRASKALAND A18-773	BRASKALAND A18-773 PWB	BRASKALAND A18-773 (REV-C.0) PWP	Planned	30.00	4262.06	5930.00	9739.75	85.38	9739.75	PASS
SEC.07-T06N-R64W	SLOT#09 BRASKALAND A18-782 (732'FNL & 319'FWL,SEC.07)	BRASKALAND A18-782	BRASKALAND A18-782 PWB	BRASKALAND A18-782 (REV-C.0) PWP	Planned	30.00	4261.41	500.00	10530.00	92.45	10530.00	PASS
SEC.07-T06N-R64W	SLOT#43 CARLSON #34-7 (05-123-14251)	CARLSON #34-7 (05-123-14251)	CARLSON #34-7 AWB	CARLSON #34-7 AWP	Drilling	406.04	3935.69	406.04	7030.00	95.10	7030.00	PASS
SEC.07-T06N-R64W	SLOT#40 EHRLICH #24-7 (05-123-20469)	EHRLICH #24-7 (05-123-20469)	EHRLICH #24-7 AWB	EHRLICH #24-7 AWP	Drilling	315.55	4609.50	315.55	7030.00	109.84	7030.00	PASS
SEC.07-T06N-R64W	SLOT#36 EHRLICH #1 (05-123-12382)	EHRLICH #1 (05-123-12382)	EHRLICH #1 AWB	EHRLICH #1 AWP	Drilling	71.00	4607.84	71.00	7380.08	112.61	7380.08	PASS
SEC.07-T06N-R64W	SLOT#44 EHRLICH #2 (05-123-12460)	EHRLICH #2 (05-123-12460)	EHRLICH #2 AWB	EHRLICH #2 AWP	Drilling	514.50	5434.02	514.50	7378.89	123.88	7378.89	PASS