

NOBLE ENERGY, INC



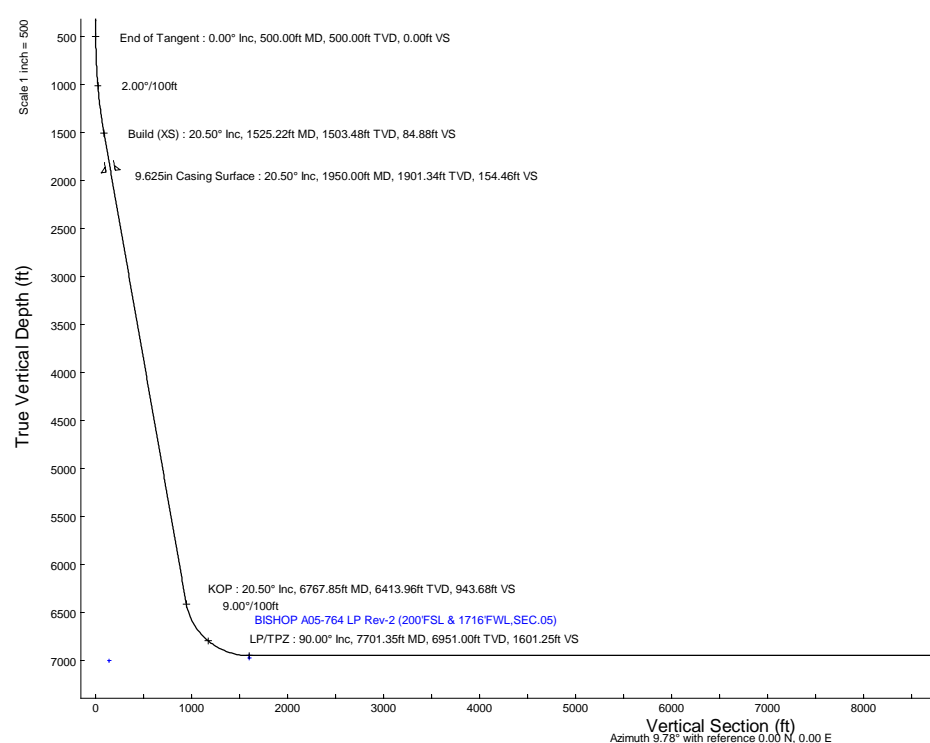
Location: COLORADO Slot: SLOT#27 BISHOP A05-764 (1011FNL & 396FEL, SEC.07)
 Field: WELD COUNTY (NOBLE NAD 83 GRID) Well: BISHOP A05-764
 Facility: SEC.07-T06N-R64W Wellbore: BISHOP A05-764 PWB

Plot reference wellpath is BISHOP A05-764 (REV-C.0) PWP
 Grid System: NAD83 / Lambert Colorado SP, Northern Zone (501), US feet
 True vertical depths are referenced to RIG (4745GL+30KB@4775RKB) (RKB)
 North Reference: Grid north
 Reference wellpath measured depths are referenced to RIG (4745GL+30KB@4775RKB) (RKB)
 Scale: True distance
 RIG (4745GL+30KB@4775RKB) (RKB) to Mean Sea Level: 4775 feet
 Coordinates are in feet referenced to Slot
 Mean Sea Level to Ground level (At Slot: SLOT#27 BISHOP A05-764 (1011FNL & 396FEL, SEC.07)): 0 feet
 Depths are in feet
 Offset wellpath MDs are referenced to each path's default MD datum
 Created by: martsam01 on 2023-10-06, Database: WA, Denver

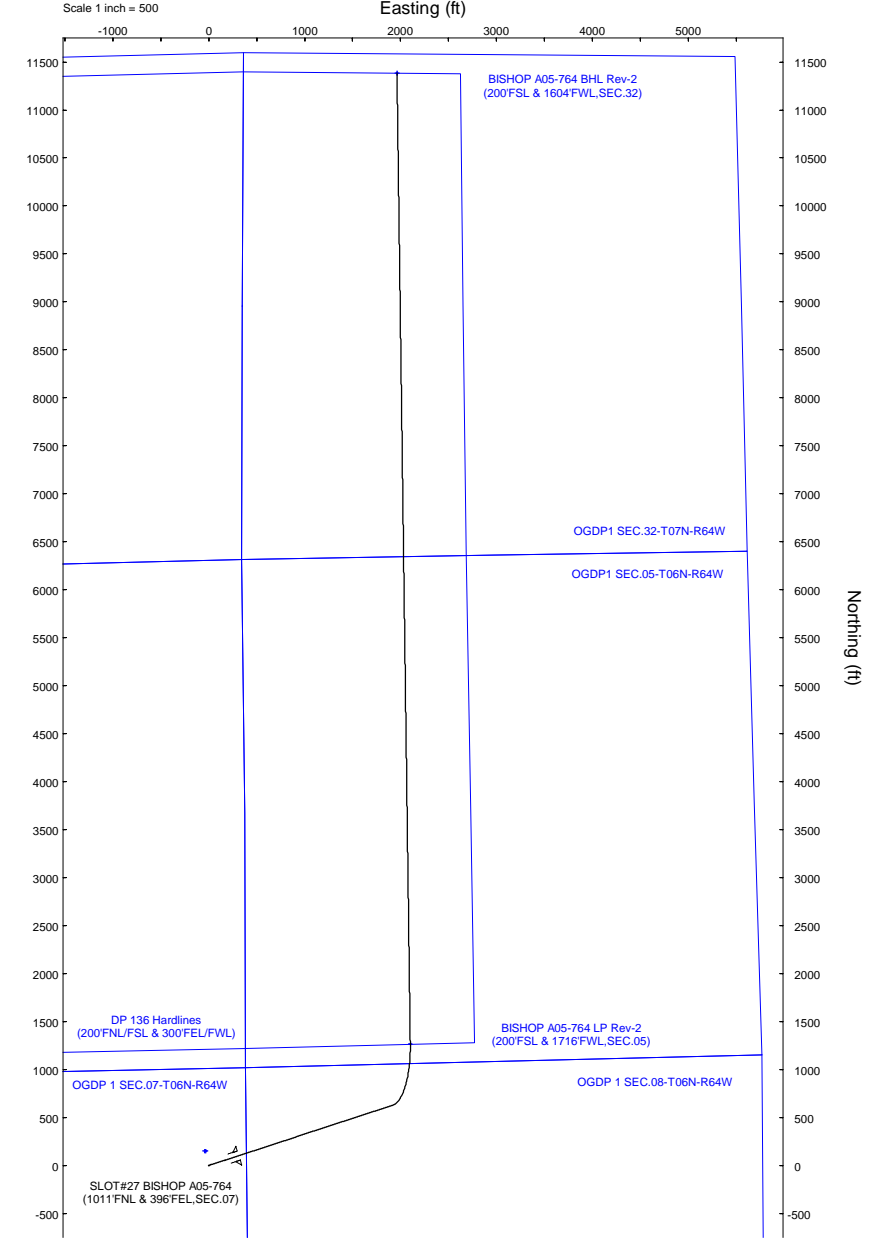
Location Information					
Facility Name		Grid East (US ft)	Grid North (US ft)	Latitude	Longitude
SEC.07-T06N-R64W		3254380.716	1428262.611	40°30'19.3680"N	104°35'6.7200"W
Slot	Local N (ft)	Local E (ft)	Grid East (US ft)	Grid North (US ft)	Latitude
SLOT#27 BISHOP A05-764 (1011FNL & 396FEL, SEC.07)	-149.81	29.08	3254409.793	1428112.809	40°30'17.8848"N
RIG (4745GL+30KB@4775RKB) (RKB) to Ground level (At Slot: SLOT#27 BISHOP A05-764 (1011FNL & 396FEL, SEC.07))	4775ft				
Mean Sea Level to Ground level (At Slot: SLOT#27 BISHOP A05-764 (1011FNL & 396FEL, SEC.07))	0ft				
RIG (4745GL+30KB@4775RKB) (RKB) to Mean Sea Level	4775ft				

Well Profile Data							
Design Comment	MD (ft)	Inc (°)	Az (°)	TVD (ft)	Local N (ft)	Local E (ft)	DLS (°/100ft)
SHL	30.00	0.000	71.900	30.00	0.00	0.00	0.00
End of Tangent	500.00	0.000	71.900	500.00	0.00	0.00	0.00
Build (XS)	1525.22	20.504	71.900	1503.48	56.39	172.52	2.00
KOP	6767.85	20.504	71.900	6413.96	626.89	1918.03	0.00
LP/TPZ	7701.35	90.000	359.217	6951.00	1262.61	2101.10	9.00
BHL	17823.41	90.000	359.217	6951.00	11383.72	1962.77	0.00

Targets							
Name	MD (ft)	TVD (ft)	Local N (ft)	Local E (ft)	Grid East (US ft)	Grid North (US ft)	Latitude
OGDP 1 SEC.07-T06N-R64W	N/A	3.00	149.81	-29.08	3254380.72	1428262.61	40°30'19.3680"N
OGDP 1 SEC.08-T06N-R64W	N/A	3.00	149.81	-29.08	3254380.72	1428262.61	40°30'19.3680"N
OGDP1 SEC.05-T06N-R64W	N/A	21.00	168.24	-4281.44	3250128.51	1428281.04	40°30'19.9800"N
OGDP1 SEC.06-T06N-R64W	N/A	21.00	168.24	-4281.44	3250128.51	1428281.04	40°30'19.9800"N
OGDP1 SEC.31-T07N-R64W	N/A	21.00	168.24	-4281.44	3250128.51	1428281.04	40°30'19.9800"N
OGDP1 SEC.32-T07N-R64W	N/A	21.00	168.24	-4281.44	3250128.51	1428281.04	40°30'19.9800"N
BISHOP A05-764 BHL Rev-2 (200FSL & 1604FWL, SEC.32)	17823.41	6951.00	11383.72	1962.77	3256372.50	1439496.13	40°32'10.1651"N
BISHOP A05-764 LP Rev-2 (200FSL & 1716FWL, SEC.05)	7701.35	6951.00	1262.61	2101.10	3256510.82	1429375.37	40°30'30.1454"N
BISHOP A05-764 BHL Rev-1 (200FSL & 1604FWL, SEC.32)	N/A	6975.00	11383.72	1962.77	3256372.50	1439496.13	40°32'10.1651"N
BISHOP A05-764 LP Rev-1 (200FSL & 1716FWL, SEC.05)	N/A	6975.00	1262.61	2101.10	3256510.82	1429375.37	40°30'30.1454"N
DP 136 Hardlines (200FNL/FSL & 300FEL/FWL)	N/A	7004.00	150.01	-45.21	3254364.58	1428262.81	40°30'19.3716"N



Survey Program					
Start MD (ft)	End MD (ft)	Tool	Model	Log Name/Comment	Wellbore
30.00	17952.53	OWSG MWD rev2	OWSG MWD rev2 (MS+IFR1)		BISHOP A05-764 PWB



Scale 1 inch = 500

BGM (1900.0 to 2024.0) Dip: 66.88° Field: 51663.1+1
 Magnetic North is 7.28 degrees East of True North (at 10/4/2023)
 Grid North is 0.58 degrees East of True North
 To correct azimuth from True to Grid subtract 0.58 degrees
 To correct azimuth from Magnetic to Grid add 6.79 degrees

REFERENCE WELLPATH IDENTIFICATION

Operator	NOBLE ENERGY, INC	Well	BISHOP A05-764
Field	WELD COUNTY (NOBLE NAD 83 GRID)	API/Legal	
Facility	SEC.07-T06N-R64W	Wellbore	BISHOP A05-764 PWB
Slot	SLOT#27 BISHOP A05-764 (1011'FNL & 396'FEL,SEC.07)		

REPORT SETUP INFORMATION

Projection System	NAD83 / Lambert Colorado SP, Northern Zone (501), US feet	Software System	WellArchitect® 6.0
North Reference	Grid	User	Martsam01
Scale	0.999967	Report Generated	10/6/2023 at 6:09:22 PM
Convergence at slot	0.59° East	Database	WA_Denver

WELLPATH LOCATION

	Local coordinates		Grid coordinates		Geographic coordinates	
	North[ft]	East[ft]	Easting[US ft]	Northing[US ft]	Latitude	Longitude
Slot Location	-149.81	29.08	3254409.79	1428112.81	40.5049680°	-104.5851010°
Facility Reference Pt			3254380.72	1428262.61	40.5053800°	-104.5852000°
Field Reference Pt			3000000.00	4454105.15	48.7761986°	-105.5000000°

WELLPATH DATUM

Calculation method	Minimum curvature	RIG (4745'GL+30'KB@4775'RKB) (RKB) to Facility Vertical Datum	4775.00ft
Horizontal Reference Pt	Slot	RIG (4745'GL+30'KB@4775'RKB) (RKB) to Mean Sea Level	4775.00ft
Vertical Reference Pt	RIG (4745'GL+30'KB@4775'RKB) (RKB)	RIG (4745'GL+30'KB@4775'RKB) (RKB) to Ground Level at Slot (SLOT#27 BISHOP A05-764 (1011'FNL & 396'FEL,SEC.07))	4775.00ft
MD Reference Pt	RIG (4745'GL+30'KB@4775'RKB) (RKB)	Section Origin	N 0.00, E 0.00 ft
Field Vertical Reference	Mean Sea Level	Section Azimuth	9.78°

REFERENCE WELLPATH IDENTIFICATION			
Operator	NOBLE ENERGY, INC	Well	BISHOP A05-764
Field	WELD COUNTY (NOBLE NAD 83 GRID)	API/Legal	
Facility	SEC.07-T06N-R64W	Wellbore	BISHOP A05-764 PWB
Slot	SLOT#27 BISHOP A05-764 (1011'FNL & 396'FEL,SEC.07)		

WELLPATH DATA (184 stations) † = interpolated, ‡ = extrapolated station

MD [ft]	Inclination [°]	Azimuth [°]	TVD [ft]	Vert Sect [ft]	North [ft]	East [ft]	Latitude	Longitude	DLS [°/100ft]	Comments
0.00†	0.000	71.900	0.00	0.00	0.00	0.00	40.5049680	-104.5851010	0.00	
30.00	0.000	71.900	30.00	0.00	0.00	0.00	40.5049680	-104.5851010	0.00	SHL
130.00†	0.000	71.900	130.00	0.00	0.00	0.00	40.5049680	-104.5851010	0.00	
230.00†	0.000	71.900	230.00	0.00	0.00	0.00	40.5049680	-104.5851010	0.00	
330.00†	0.000	71.900	330.00	0.00	0.00	0.00	40.5049680	-104.5851010	0.00	
430.00†	0.000	71.900	430.00	0.00	0.00	0.00	40.5049680	-104.5851010	0.00	
500.00	0.000	71.900	500.00	0.00	0.00	0.00	40.5049680	-104.5851010	0.00	End of Tangent
530.00†	0.600	71.900	530.00	0.07	0.05	0.15	40.5049681	-104.5851005	2.00	
630.00†	2.600	71.900	629.96	1.38	0.92	2.80	40.5049704	-104.5850909	2.00	
730.00†	4.600	71.900	729.75	4.32	2.87	8.77	40.5049756	-104.5850694	2.00	
830.00†	6.600	71.900	829.27	8.88	5.90	18.05	40.5049837	-104.5850359	2.00	
930.00†	8.600	71.900	928.39	15.06	10.01	30.62	40.5049946	-104.5849905	2.00	
1030.00†	10.600	71.900	1026.98	22.86	15.19	46.47	40.5050084	-104.5849333	2.00	
1130.00†	12.600	71.900	1124.93	32.27	21.43	65.58	40.5050250	-104.5848644	2.00	
1230.00†	14.600	71.900	1222.13	43.26	28.74	87.93	40.5050444	-104.5847838	2.00	
1330.00†	16.600	71.900	1318.44	55.84	37.09	113.49	40.5050666	-104.5846915	2.00	
1430.00†	18.600	71.900	1413.75	69.98	46.49	142.23	40.5050916	-104.5845879	2.00	
1525.22	20.504	71.900	1503.48	84.88	56.39	172.52	40.5051179	-104.5844786	2.00	Build (XS)
1530.00†	20.504	71.900	1507.95	85.66	56.91	174.11	40.5051193	-104.5844728	0.00	
1630.00†	20.504	71.900	1601.62	102.04	67.79	207.40	40.5051482	-104.5843527	0.00	
1730.00†	20.504	71.900	1695.28	118.42	78.67	240.70	40.5051771	-104.5842326	0.00	
1830.00†	20.504	71.900	1788.95	134.80	89.55	273.99	40.5052060	-104.5841125	0.00	
1930.00†	20.504	71.900	1882.61	151.19	100.43	307.29	40.5052350	-104.5839923	0.00	
2030.00†	20.504	71.900	1976.28	167.57	111.32	340.58	40.5052639	-104.5838722	0.00	
2130.00†	20.504	71.900	2069.94	183.95	122.20	373.88	40.5052928	-104.5837521	0.00	
2230.00†	20.504	71.900	2163.61	200.33	133.08	407.17	40.5053217	-104.5836320	0.00	
2330.00†	20.504	71.900	2257.27	216.71	143.96	440.47	40.5053507	-104.5835118	0.00	
2430.00†	20.504	71.900	2350.93	233.09	154.84	473.76	40.5053796	-104.5833917	0.00	
2530.00†	20.504	71.900	2444.60	249.47	165.73	507.06	40.5054085	-104.5832716	0.00	
2630.00†	20.504	71.900	2538.26	265.85	176.61	540.35	40.5054374	-104.5831515	0.00	
2730.00†	20.504	71.900	2631.93	282.23	187.49	573.65	40.5054663	-104.5830313	0.00	
2830.00†	20.504	71.900	2725.59	298.62	198.37	606.94	40.5054953	-104.5829112	0.00	
2930.00†	20.504	71.900	2819.26	315.00	209.26	640.23	40.5055242	-104.5827911	0.00	
3030.00†	20.504	71.900	2912.92	331.38	220.14	673.53	40.5055531	-104.5826709	0.00	
3130.00†	20.504	71.900	3006.59	347.76	231.02	706.82	40.5055820	-104.5825508	0.00	
3230.00†	20.504	71.900	3100.25	364.14	241.90	740.12	40.5056110	-104.5824307	0.00	
3330.00†	20.504	71.900	3193.91	380.52	252.78	773.41	40.5056399	-104.5823106	0.00	
3430.00†	20.504	71.900	3287.58	396.90	263.67	806.71	40.5056688	-104.5821904	0.00	
3530.00†	20.504	71.900	3381.24	413.28	274.55	840.00	40.5056977	-104.5820703	0.00	
3630.00†	20.504	71.900	3474.91	429.66	285.43	873.30	40.5057266	-104.5819502	0.00	
3730.00†	20.504	71.900	3568.57	446.04	296.31	906.59	40.5057556	-104.5818301	0.00	
3830.00†	20.504	71.900	3662.24	462.43	307.19	939.89	40.5057845	-104.5817099	0.00	
3930.00†	20.504	71.900	3755.90	478.81	318.08	973.18	40.5058134	-104.5815898	0.00	
4030.00†	20.504	71.900	3849.57	495.19	328.96	1006.48	40.5058423	-104.5814697	0.00	
4130.00†	20.504	71.900	3943.23	511.57	339.84	1039.77	40.5058713	-104.5813496	0.00	

REFERENCE WELLPATH IDENTIFICATION			
Operator	NOBLE ENERGY, INC	Well	BISHOP A05-764
Field	WELD COUNTY (NOBLE NAD 83 GRID)	API/Legal	
Facility	SEC.07-T06N-R64W	Wellbore	BISHOP A05-764 PWB
Slot	SLOT#27 BISHOP A05-764 (1011'FNL & 396'FEL,SEC.07)		

WELLPATH DATA (184 stations) † = interpolated, ‡ = extrapolated station

MD [ft]	Inclination [°]	Azimuth [°]	TVD [ft]	Vert Sect [ft]	North [ft]	East [ft]	Latitude	Longitude	DLS [°/100ft]	Comments
4230.00†	20.504	71.900	4036.90	527.95	350.72	1073.07	40.5059002	-104.5812294	0.00	
4330.00†	20.504	71.900	4130.56	544.33	361.60	1106.36	40.5059291	-104.5811093	0.00	
4430.00†	20.504	71.900	4224.22	560.71	372.49	1139.66	40.5059580	-104.5809892	0.00	
4530.00†	20.504	71.900	4317.89	577.09	383.37	1172.95	40.5059869	-104.5808690	0.00	
4630.00†	20.504	71.900	4411.55	593.47	394.25	1206.25	40.5060159	-104.5807489	0.00	
4730.00†	20.504	71.900	4505.22	609.86	405.13	1239.54	40.5060448	-104.5806288	0.00	
4830.00†	20.504	71.900	4598.88	626.24	416.02	1272.83	40.5060737	-104.5805087	0.00	
4930.00†	20.504	71.900	4692.55	642.62	426.90	1306.13	40.5061026	-104.5803885	0.00	
5030.00†	20.504	71.900	4786.21	659.00	437.78	1339.42	40.5061315	-104.5802684	0.00	
5130.00†	20.504	71.900	4879.88	675.38	448.66	1372.72	40.5061605	-104.5801483	0.00	
5230.00†	20.504	71.900	4973.54	691.76	459.54	1406.01	40.5061894	-104.5800281	0.00	
5330.00†	20.504	71.900	5067.20	708.14	470.43	1439.31	40.5062183	-104.5799080	0.00	
5430.00†	20.504	71.900	5160.87	724.52	481.31	1472.60	40.5062472	-104.5797879	0.00	
5530.00†	20.504	71.900	5254.53	740.90	492.19	1505.90	40.5062761	-104.5796678	0.00	
5630.00†	20.504	71.900	5348.20	757.29	503.07	1539.19	40.5063051	-104.5795476	0.00	
5730.00†	20.504	71.900	5441.86	773.67	513.95	1572.49	40.5063340	-104.5794275	0.00	
5830.00†	20.504	71.900	5535.53	790.05	524.84	1605.78	40.5063629	-104.5793074	0.00	
5930.00†	20.504	71.900	5629.19	806.43	535.72	1639.08	40.5063918	-104.5791872	0.00	
6030.00†	20.504	71.900	5722.86	822.81	546.60	1672.37	40.5064207	-104.5790671	0.00	
6130.00†	20.504	71.900	5816.52	839.19	557.48	1705.67	40.5064497	-104.5789470	0.00	
6230.00†	20.504	71.900	5910.19	855.57	568.37	1738.96	40.5064786	-104.5788269	0.00	
6330.00†	20.504	71.900	6003.85	871.95	579.25	1772.26	40.5065075	-104.5787067	0.00	
6430.00†	20.504	71.900	6097.51	888.33	590.13	1805.55	40.5065364	-104.5785866	0.00	
6530.00†	20.504	71.900	6191.18	904.71	601.01	1838.84	40.5065653	-104.5784665	0.00	
6630.00†	20.504	71.900	6284.84	921.10	611.89	1872.14	40.5065943	-104.5783463	0.00	
6730.00†	20.504	71.900	6378.51	937.48	622.78	1905.43	40.5066232	-104.5782262	0.00	
6767.85	20.504	71.900	6413.96	943.68	626.89	1918.03	40.5066341	-104.5781807	0.00	KOP
6830.00†	22.689	57.862	6471.78	956.79	636.66	1938.55	40.5066603	-104.5781066	9.00	
6930.00†	28.154	41.063	6562.18	989.90	664.77	1970.44	40.5067366	-104.5779909	9.00	
7030.00†	35.011	29.859	6647.40	1037.11	707.52	2000.28	40.5068531	-104.5778820	9.00	
7130.00†	42.588	22.073	6725.32	1097.23	763.87	2027.34	40.5070070	-104.5777826	9.00	
7230.00†	50.557	16.297	6794.04	1168.80	832.43	2050.94	40.5071945	-104.5776952	9.00	
7330.00†	58.753	11.728	6851.86	1250.06	911.51	2070.50	40.5074109	-104.5776218	9.00	
7430.00†	67.084	7.898	6897.36	1338.99	999.16	2085.55	40.5076511	-104.5775645	9.00	
7530.00†	75.497	4.516	6929.41	1433.42	1093.23	2095.71	40.5079090	-104.5775244	9.00	
7630.00†	83.954	1.384	6947.24	1531.01	1191.39	2100.73	40.5081783	-104.5775027	9.00	
7701.35	90.000	359.217	6951.00†	1601.25	1262.61	2101.10	40.5083737	-104.5774987	9.00	LP/TPZ
7730.00†	90.000	359.217	6951.00	1629.41	1291.25	2100.71	40.5084524	-104.5774990	0.00	
7830.00†	90.000	359.217	6951.00	1727.72	1391.24	2099.34	40.5087268	-104.5775002	0.00	
7930.00†	90.000	359.217	6951.00	1826.02	1491.23	2097.98	40.5090013	-104.5775014	0.00	
8030.00†	90.000	359.217	6951.00	1924.33	1591.22	2096.61	40.5092758	-104.5775025	0.00	
8130.00†	90.000	359.217	6951.00	2022.63	1691.22	2095.24	40.5095503	-104.5775037	0.00	
8230.00†	90.000	359.217	6951.00	2120.94	1791.21	2093.88	40.5098248	-104.5775049	0.00	
8330.00†	90.000	359.217	6951.00	2219.24	1891.20	2092.51	40.5100993	-104.5775061	0.00	
8430.00†	90.000	359.217	6951.00	2317.54	1991.19	2091.14	40.5103737	-104.5775072	0.00	

REFERENCE WELLPATH IDENTIFICATION			
Operator	NOBLE ENERGY, INC	Well	BISHOP A05-764
Field	WELD COUNTY (NOBLE NAD 83 GRID)	API/Legal	
Facility	SEC.07-T06N-R64W	Wellbore	BISHOP A05-764 PWB
Slot	SLOT#27 BISHOP A05-764 (1011'FNL & 396'FEL,SEC.07)		

WELLPATH DATA (184 stations) † = interpolated, ‡ = extrapolated station

MD [ft]	Inclination [°]	Azimuth [°]	TVD [ft]	Vert Sect [ft]	North [ft]	East [ft]	Latitude	Longitude	DLS [°/100ft]	Comments
8530.00†	90.000	359.217	6951.00	2415.85	2091.18	2089.78	40.5106482	-104.5775084	0.00	
8630.00†	90.000	359.217	6951.00	2514.15	2191.17	2088.41	40.5109227	-104.5775096	0.00	
8730.00†	90.000	359.217	6951.00	2612.46	2291.16	2087.04	40.5111972	-104.5775107	0.00	
8830.00†	90.000	359.217	6951.00	2710.76	2391.15	2085.68	40.5114717	-104.5775119	0.00	
8930.00†	90.000	359.217	6951.00	2809.07	2491.14	2084.31	40.5117462	-104.5775131	0.00	
9030.00†	90.000	359.217	6951.00	2907.37	2591.13	2082.94	40.5120206	-104.5775143	0.00	
9130.00†	90.000	359.217	6951.00	3005.68	2691.12	2081.58	40.5122951	-104.5775154	0.00	
9230.00†	90.000	359.217	6951.00	3103.98	2791.11	2080.21	40.5125696	-104.5775166	0.00	
9330.00†	90.000	359.217	6951.00	3202.29	2891.10	2078.84	40.5128441	-104.5775178	0.00	
9430.00†	90.000	359.217	6951.00	3300.59	2991.09	2077.48	40.5131186	-104.5775190	0.00	
9530.00†	90.000	359.217	6951.00	3398.89	3091.08	2076.11	40.5133931	-104.5775201	0.00	
9630.00†	90.000	359.217	6951.00	3497.20	3191.08	2074.74	40.5136675	-104.5775213	0.00	
9730.00†	90.000	359.217	6951.00	3595.50	3291.07	2073.38	40.5139420	-104.5775225	0.00	
9830.00†	90.000	359.217	6951.00	3693.81	3391.06	2072.01	40.5142165	-104.5775237	0.00	
9930.00†	90.000	359.217	6951.00	3792.11	3491.05	2070.64	40.5144910	-104.5775248	0.00	
10030.00†	90.000	359.217	6951.00	3890.42	3591.04	2069.28	40.5147655	-104.5775260	0.00	
10130.00†	90.000	359.217	6951.00	3988.72	3691.03	2067.91	40.5150400	-104.5775272	0.00	
10230.00†	90.000	359.217	6951.00	4087.03	3791.02	2066.54	40.5153144	-104.5775284	0.00	
10330.00†	90.000	359.217	6951.00	4185.33	3891.01	2065.18	40.5155889	-104.5775295	0.00	
10430.00†	90.000	359.217	6951.00	4283.64	3991.00	2063.81	40.5158634	-104.5775307	0.00	
10530.00†	90.000	359.217	6951.00	4381.94	4090.99	2062.45	40.5161379	-104.5775319	0.00	
10630.00†	90.000	359.217	6951.00	4480.24	4190.98	2061.08	40.5164124	-104.5775330	0.00	
10730.00†	90.000	359.217	6951.00	4578.55	4290.97	2059.71	40.5166869	-104.5775342	0.00	
10830.00†	90.000	359.217	6951.00	4676.85	4390.96	2058.35	40.5169613	-104.5775354	0.00	
10930.00†	90.000	359.217	6951.00	4775.16	4490.95	2056.98	40.5172358	-104.5775366	0.00	
11030.00†	90.000	359.217	6951.00	4873.46	4590.94	2055.61	40.5175103	-104.5775377	0.00	
11130.00†	90.000	359.217	6951.00	4971.77	4690.94	2054.25	40.5177848	-104.5775389	0.00	
11230.00†	90.000	359.217	6951.00	5070.07	4790.93	2052.88	40.5180593	-104.5775401	0.00	
11330.00†	90.000	359.217	6951.00	5168.38	4890.92	2051.51	40.5183337	-104.5775413	0.00	
11430.00†	90.000	359.217	6951.00	5266.68	4990.91	2050.15	40.5186082	-104.5775424	0.00	
11530.00†	90.000	359.217	6951.00	5364.98	5090.90	2048.78	40.5188827	-104.5775436	0.00	
11630.00†	90.000	359.217	6951.00	5463.29	5190.89	2047.41	40.5191572	-104.5775448	0.00	
11730.00†	90.000	359.217	6951.00	5561.59	5290.88	2046.05	40.5194317	-104.5775460	0.00	
11830.00†	90.000	359.217	6951.00	5659.90	5390.87	2044.68	40.5197062	-104.5775471	0.00	
11930.00†	90.000	359.217	6951.00	5758.20	5490.86	2043.31	40.5199806	-104.5775483	0.00	
12030.00†	90.000	359.217	6951.00	5856.51	5590.85	2041.95	40.5202551	-104.5775495	0.00	
12130.00†	90.000	359.217	6951.00	5954.81	5690.84	2040.58	40.5205296	-104.5775507	0.00	
12230.00†	90.000	359.217	6951.00	6053.12	5790.83	2039.21	40.5208041	-104.5775518	0.00	
12330.00†	90.000	359.217	6951.00	6151.42	5890.82	2037.85	40.5210786	-104.5775530	0.00	
12430.00†	90.000	359.217	6951.00	6249.73	5990.81	2036.48	40.5213531	-104.5775542	0.00	
12530.00†	90.000	359.217	6951.00	6348.03	6090.80	2035.11	40.5216275	-104.5775553	0.00	
12630.00†	90.000	359.217	6951.00	6446.33	6190.80	2033.75	40.5219020	-104.5775565	0.00	
12730.00†	90.000	359.217	6951.00	6544.64	6290.79	2032.38	40.5221765	-104.5775577	0.00	
12830.00†	90.000	359.217	6951.00	6642.94	6390.78	2031.01	40.5224510	-104.5775589	0.00	
12930.00†	90.000	359.217	6951.00	6741.25	6490.77	2029.65	40.5227255	-104.5775600	0.00	

REFERENCE WELLPATH IDENTIFICATION			
Operator	NOBLE ENERGY, INC	Well	BISHOP A05-764
Field	WELD COUNTY (NOBLE NAD 83 GRID)	API/Legal	
Facility	SEC.07-T06N-R64W	Wellbore	BISHOP A05-764 PWB
Slot	SLOT#27 BISHOP A05-764 (1011'FNL & 396'FEL,SEC.07)		

WELLPATH DATA (184 stations) † = interpolated, ‡ = extrapolated station

MD [ft]	Inclination [°]	Azimuth [°]	TVD [ft]	Vert Sect [ft]	North [ft]	East [ft]	Latitude	Longitude	DLS [°/100ft]	Comments
13030.00†	90.000	359.217	6951.00	6839.55	6590.76	2028.28	40.5229999	-104.5775612	0.00	
13130.00†	90.000	359.217	6951.00	6937.86	6690.75	2026.91	40.5232744	-104.5775624	0.00	
13230.00†	90.000	359.217	6951.00	7036.16	6790.74	2025.55	40.5235489	-104.5775636	0.00	
13330.00†	90.000	359.217	6951.00	7134.47	6890.73	2024.18	40.5238234	-104.5775647	0.00	
13430.00†	90.000	359.217	6951.00	7232.77	6990.72	2022.81	40.5240979	-104.5775659	0.00	
13530.00†	90.000	359.217	6951.00	7331.08	7090.71	2021.45	40.5243724	-104.5775671	0.00	
13630.00†	90.000	359.217	6951.00	7429.38	7190.70	2020.08	40.5246468	-104.5775683	0.00	
13730.00†	90.000	359.217	6951.00	7527.68	7290.69	2018.71	40.5249213	-104.5775694	0.00	
13830.00†	90.000	359.217	6951.00	7625.99	7390.68	2017.35	40.5251958	-104.5775706	0.00	
13930.00†	90.000	359.217	6951.00	7724.29	7490.67	2015.98	40.5254703	-104.5775718	0.00	
14030.00†	90.000	359.217	6951.00	7822.60	7590.66	2014.61	40.5257448	-104.5775730	0.00	
14130.00†	90.000	359.217	6951.00	7920.90	7690.66	2013.25	40.5260193	-104.5775741	0.00	
14230.00†	90.000	359.217	6951.00	8019.21	7790.65	2011.88	40.5262937	-104.5775753	0.00	
14330.00†	90.000	359.217	6951.00	8117.51	7890.64	2010.51	40.5265682	-104.5775765	0.00	
14430.00†	90.000	359.217	6951.00	8215.82	7990.63	2009.15	40.5268427	-104.5775777	0.00	
14530.00†	90.000	359.217	6951.00	8314.12	8090.62	2007.78	40.5271172	-104.5775788	0.00	
14630.00†	90.000	359.217	6951.00	8412.42	8190.61	2006.42	40.5273917	-104.5775800	0.00	
14730.00†	90.000	359.217	6951.00	8510.73	8290.60	2005.05	40.5276661	-104.5775812	0.00	
14830.00†	90.000	359.217	6951.00	8609.03	8390.59	2003.68	40.5279406	-104.5775824	0.00	
14930.00†	90.000	359.217	6951.00	8707.34	8490.58	2002.32	40.5282151	-104.5775835	0.00	
15030.00†	90.000	359.217	6951.00	8805.64	8590.57	2000.95	40.5284896	-104.5775847	0.00	
15130.00†	90.000	359.217	6951.00	8903.95	8690.56	1999.58	40.5287641	-104.5775859	0.00	
15230.00†	90.000	359.217	6951.00	9002.25	8790.55	1998.22	40.5290386	-104.5775870	0.00	
15330.00†	90.000	359.217	6951.00	9100.56	8890.54	1996.85	40.5293130	-104.5775882	0.00	
15430.00†	90.000	359.217	6951.00	9198.86	8990.53	1995.48	40.5295875	-104.5775894	0.00	
15530.00†	90.000	359.217	6951.00	9297.17	9090.52	1994.12	40.5298620	-104.5775906	0.00	
15630.00†	90.000	359.217	6951.00	9395.47	9190.52	1992.75	40.5301365	-104.5775917	0.00	
15730.00†	90.000	359.217	6951.00	9493.77	9290.51	1991.38	40.5304110	-104.5775929	0.00	
15830.00†	90.000	359.217	6951.00	9592.08	9390.50	1990.02	40.5306854	-104.5775941	0.00	
15930.00†	90.000	359.217	6951.00	9690.38	9490.49	1988.65	40.5309599	-104.5775953	0.00	
16030.00†	90.000	359.217	6951.00	9788.69	9590.48	1987.28	40.5312344	-104.5775964	0.00	
16130.00†	90.000	359.217	6951.00	9886.99	9690.47	1985.92	40.5315089	-104.5775976	0.00	
16230.00†	90.000	359.217	6951.00	9985.30	9790.46	1984.55	40.5317834	-104.5775988	0.00	
16330.00†	90.000	359.217	6951.00	10083.60	9890.45	1983.18	40.5320579	-104.5776000	0.00	
16430.00†	90.000	359.217	6951.00	10181.91	9990.44	1981.82	40.5323323	-104.5776011	0.00	
16530.00†	90.000	359.217	6951.00	10280.21	10090.43	1980.45	40.5326068	-104.5776023	0.00	
16630.00†	90.000	359.217	6951.00	10378.52	10190.42	1979.08	40.5328813	-104.5776035	0.00	
16730.00†	90.000	359.217	6951.00	10476.82	10290.41	1977.72	40.5331558	-104.5776047	0.00	
16830.00†	90.000	359.217	6951.00	10575.12	10390.40	1976.35	40.5334303	-104.5776058	0.00	
16930.00†	90.000	359.217	6951.00	10673.43	10490.39	1974.98	40.5337047	-104.5776070	0.00	
17030.00†	90.000	359.217	6951.00	10771.73	10590.38	1973.62	40.5339792	-104.5776082	0.00	
17130.00†	90.000	359.217	6951.00	10870.04	10690.37	1972.25	40.5342537	-104.5776094	0.00	
17230.00†	90.000	359.217	6951.00	10968.34	10790.37	1970.88	40.5345282	-104.5776105	0.00	
17330.00†	90.000	359.217	6951.00	11066.65	10890.36	1969.52	40.5348027	-104.5776117	0.00	
17430.00†	90.000	359.217	6951.00	11164.95	10990.35	1968.15	40.5350771	-104.5776129	0.00	

REFERENCE WELLPATH IDENTIFICATION			
Operator	NOBLE ENERGY, INC	Well	BISHOP A05-764
Field	WELD COUNTY (NOBLE NAD 83 GRID)	API/Legal	
Facility	SEC.07-T06N-R64W	Wellbore	BISHOP A05-764 PWB
Slot	SLOT#27 BISHOP A05-764 (1011'FNL & 396'FEL,SEC.07)		

WELLPATH DATA (184 stations) † = interpolated, ‡ = extrapolated station										
MD [ft]	Inclination [°]	Azimuth [°]	TVD [ft]	Vert Sect [ft]	North [ft]	East [ft]	Latitude	Longitude	DLS [°/100ft]	Comments
17530.00†	90.000	359.217	6951.00	11263.26	11090.34	1966.78	40.5353516	-104.5776141	0.00	
17630.00†	90.000	359.217	6951.00	11361.56	11190.33	1965.42	40.5356261	-104.5776152	0.00	
17730.00†	90.000	359.217	6951.00	11459.86	11290.32	1964.05	40.5359006	-104.5776164	0.00	
17823.41	90.000	359.217	6951.00‡	11551.69	11383.72	1962.77	40.5361570	-104.5776175	0.00	BHL

HOLE & CASING SECTIONS - Ref Wellbore: BISHOP A05-764 PWB Ref Wellpath: BISHOP A05-764 (REV-C.0) PWP									
String/Diameter	Start MD [ft]	End MD [ft]	Interval [ft]	Start TVD [ft]	End TVD [ft]	Start N/S [ft]	Start E/W [ft]	End N/S [ft]	End E/W [ft]
9.625in Casing Surface	30.00	1950.00	1920.00	30.00	1901.34	0.00	0.00	102.61	313.95

REFERENCE WELLPATH IDENTIFICATION			
Operator	NOBLE ENERGY, INC	Well	BISHOP A05-764
Field	WELD COUNTY (NOBLE NAD 83 GRID)	API/Legal	
Facility	SEC.07-T06N-R64W	Wellbore	BISHOP A05-764 PWB
Slot	SLOT#27 BISHOP A05-764 (1011'FNL & 396'FEL,SEC.07)		

TARGETS									
Name	MD [ft]	TVD [ft]	North [ft]	East [ft]	Grid East [US ft]	Grid North [US ft]	Latitude	Longitude	Shape
OGDP 1 SEC.07-T06N-R64W	N/A	3.00	149.81	-29.08	3254380.72	1428262.61	40.5053800	-104.5852000	polygon
2D Polygon: dimensions not calculated									
OGDP 1 SEC.08-T06N-R64W	N/A	3.00	149.81	-29.08	3254380.72	1428262.61	40.5053800	-104.5852000	polygon
2D Polygon: dimensions not calculated									
OGDP1 SEC.05-T06N-R64W	N/A	21.00	168.24	-4281.44	3250128.51	1428281.04	40.5055500	-104.6004900	polygon
2D Polygon: dimensions not calculated									
OGDP1 SEC.06-T06N-R64W	N/A	21.00	168.24	-4281.44	3250128.51	1428281.04	40.5055500	-104.6004900	polygon
2D Polygon: dimensions not calculated									
OGDP1 SEC.31-T07N-R64W	N/A	21.00	168.24	-4281.44	3250128.51	1428281.04	40.5055500	-104.6004900	polygon
2D Polygon: dimensions not calculated									
OGDP1 SEC.32-T07N-R64W	N/A	21.00	168.24	-4281.44	3250128.51	1428281.04	40.5055500	-104.6004900	polygon
2D Polygon: dimensions not calculated									
2) BISHOP A05-764 BHL Rev-2 (200'FSL & 1604'FWL,SEC.32)	17823.41	6951.00	11383.72	1962.77	3256372.50	1439496.13	40.5361570	-104.5776175	point
1) BISHOP A05-764 LP Rev-2 (200'FSL & 1716'FWL,SEC.05)	7701.35	6951.00	1262.61	2101.10	3256510.82	1429375.37	40.5083737	-104.5774987	point
BISHOP A05-764 BHL Rev-1 (200'FSL & 1604'FWL,SEC.32)	N/A	6975.00	11383.72	1962.77	3256372.50	1439496.13	40.5361570	-104.5776175	point
BISHOP A05-764 LP Rev-1 (200'FSL & 1716'FWL,SEC.05)	N/A	6975.00	1262.61	2101.10	3256510.82	1429375.37	40.5083737	-104.5774987	point
DP 136 Hardlines (200'FNL/FSL & 300'FEL/FWL)	N/A	7004.00	150.01	-45.21	3254364.58	1428262.81	40.5053810	-104.5852580	polygon
2D Polygon: dimensions not calculated									

SURVEY PROGRAM - Ref Wellbore: BISHOP A05-764 PWB Ref Wellpath: BISHOP A05-764 (REV-C.0) PWP				
Start MD [ft]	End MD [ft]	Positional Uncertainty Model	Log Name/Comment	Wellbore
30.00	17952.53	OWSG MWD rev2 (MS+IFR1)		BISHOP A05-764 PWB

REFERENCE WELLPATH IDENTIFICATION			
Operator	NOBLE ENERGY, INC	Well	BISHOP A05-764
Field	WELD COUNTY (NOBLE NAD 83 GRID)	API/Legal	
Facility	SEC.07-T06N-R64W	Wellbore	BISHOP A05-764 PWB
Slot	SLOT#27 BISHOP A05-764 (1011'FNL & 396'FEL,SEC.07)		

DESIGN COMMENTS				
MD [ft]	Inclination [°]	Azimuth [°]	TVD [ft]	Comment
30.00	0.000	71.900	30.00	SHL
500.00	0.000	71.900	500.00	End of Tangent
1525.22	20.504	71.900	1503.48	Build (XS)
6767.85	20.504	71.900	6413.96	KOP
7701.35	90.000	359.217	6951.00	LP/TPZ
17823.41	90.000	359.217	6951.00	BHL

REFERENCE WELLPATH IDENTIFICATION			
Operator	NOBLE ENERGY, INC	Well	BISHOP A05-764
Field	WELD COUNTY (NOBLE NAD 83 GRID)	API/Legal	
Facility	SEC.07-T06N-R64W	Wellbore	BISHOP A05-764 PWB
Slot	SLOT#27 BISHOP A05-764 (1011'FNL & 396'FEL,SEC.07)		

REPORT SETUP INFORMATION			
Projection System	NAD83 / Lambert Colorado SP, Northern Zone (501), US feet	Software System	WellArchitect® 6.0
North Reference	Grid	User	Martsam01
Scale	0.999967	Report Generated	10/6/2023 at 5:44:27 PM
Convergence at slot	0.59° East	Database	WA_Denver

WELLPATH LOCATION						
	Local coordinates		Grid coordinates		Geographic coordinates	
	North[ft]	East[ft]	Easting[US ft]	Northing[US ft]	Latitude	Longitude
Slot Location	-149.81	29.08	3254409.79	1428112.81	40°30'17.8848"N	104°35'6.3636"W
Facility Reference Pt			3254380.72	1428262.61	40°30'19.3680"N	104°35'6.7200"W
Field Reference Pt			3000000.00	4454105.15	48°46'34.3150"N	105°30'0.0000"W

WELLPATH DATUM			
Calculation method	Minimum Curvature	RIG (4745'GL+30'KB@4775'RKB) (RKB) to Facility Vertical Datum	4775.00ft
Horizontal Reference Pt	Slot	RIG (4745'GL+30'KB@4775'RKB) (RKB) to Mean Sea Level	4775.00ft
Vertical Reference Pt	RIG (4745'GL+30'KB@4775'RKB) (RKB)	RIG (4745'GL+30'KB@4775'RKB) (RKB) to Ground Level at Slot (SLOT#27 BISHOP A05-764 (1011'FNL & 396'FEL,SEC.07))	4775.00ft
MD Reference Pt	RIG (4745'GL+30'KB@4775'RKB) (RKB)		
Field Vertical Reference	Mean Sea Level		

POSITIONAL UNCERTAINTY CALCULATION SETTINGS					
Ellipse Confidence Limit	3.50 Std Dev	Ellipse Start MD	30.00ft	Surface Position Uncertainty	included
Declination	7.38° East of TN	Dip Angle	66.68°	Mag Field Strength	51663 nT
Slot Surface Uncertainty @1SD		Horizontal	0.100ft	Vertical	1.000ft
Facility Surface Uncertainty @1SD		Horizontal	8.200ft	Vertical	3.000ft
Positional Uncertainty values in the WELLPATH DATA table are the projection of the ellipsoid of uncertainty onto the vertical and horizontal planes					

REFERENCE WELLPATH IDENTIFICATION

Operator	NOBLE ENERGY, INC	Well	BISHOP A05-764
Field	WELD COUNTY (NOBLE NAD 83 GRID)	API/Legal	
Facility	SEC.07-T06N-R64W	Wellbore	BISHOP A05-764 PWB
Slot	SLOT#27 BISHOP A05-764 (1011'FNL & 396'FEL,SEC.07)		

PROXIMITY-SCAN RULE

Rule Name	SPE WPTS Stop Drilling HSE Risk (2017)	Rule Based On	Ratio
Plane of Rule	Closest Approach	Threshold Value	1.00
Include Casing & Hole Size	yes	Apply Cone of Safety	no

HOLE & CASING SECTIONS - Ref Wellbore: BISHOP A05-764 PWB Ref Wellpath: BISHOP A05-764 (REV-C.0) PWP

String/Diameter	Start MD [ft]	End MD [ft]	Interval [ft]	Start TVD [ft]	End TVD [ft]	Start N/S [ft]	Start E/W [ft]	End N/S [ft]	End E/W [ft]
9.625in Casing Surface	30.00	1950.00	1920.00	30.00	1901.34	0.00	0.00	102.61	313.95

SURVEY PROGRAM - Ref Wellbore: BISHOP A05-764 PWB Ref Wellpath: BISHOP A05-764 (REV-C.0) PWP

Start MD [ft]	End MD [ft]	Positional Uncertainty Model	Log Name/Comment	Wellbore
30.00	17952.53	OWSG MWD rev2 (MS+IFR1)		BISHOP A05-764 PWB

REFERENCE WELLPATH IDENTIFICATION

Operator	NOBLE ENERGY, INC	Well	BISHOP A05-764
Field	WELD COUNTY (NOBLE NAD 83 GRID)	API/Legal	
Facility	SEC.07-T06N-R64W	Wellbore	BISHOP A05-764 PWB
Slot	SLOT#27 BISHOP A05-764 (1011'FNL & 396'FEL,SEC.07)		

CALCULATION RANGE & CUTOFF

From: 30.00ft MD	To: 17823.41ft MD	C-C Cutoff: (none)
------------------	-------------------	--------------------

OFFSET WELL CLEARANCE SUMMARY (91 Offset Wellpaths selected) Ratios are calculated in Closest Approach plane

Offset Facility	Offset Slot	Offset Well	Offset Wellbore	Offset Wellpath	Wellbore Status	C-C Clearance Distance			Rule Separation Ratio			
						Ref MD [ft]	Min C-C Clear Dist [ft]	Diverging from MD [ft]	Ref MD of Min Ratio [ft]	Min Ratio	Min Ratio Dvrg from [ft]	Rule Status
SEC.05-T06N-R64W	SLOT#04 GRADY DYER #23-5 (05-123-21959)	GRADY DYER #23-5 (05-123-21959)	GRADY DYER #23-5 AWB	GRADY DYER #23-5 AWP	Drilling	9317.14	135.59	9317.14	9317.14	0.02	9317.14	FAIL
SEC.32-T07N-R64W	SLOT#08 LAW #1 (05-123-12001)	LAW #1 (05-123-12001)	LAW #1 AWB	LAW #1 AWP	Drilling	14735.58	284.74	14735.58	14735.59	0.03	14735.59	FAIL
SEC.32-T07N-R64W	SLOT#09 LEY #1-32 (05-123-12561)	LEY #1-32 (05-123-12561)	LEY #1-32 AWB	LEY #1-32 AWP	Drilling	17348.34	999.31	17348.34	17348.33	0.12	17348.33	FAIL
SEC.05-T06N-R64W	SLOT#17 GRADY DYER #14-5 (05-123-21960)	GRADY DYER #14-5 (05-123-21960)	GRADY DYER #14-5 AWB	GRADY DYER #14-5 AWP	Drilling	8166.69	1219.58	8166.69	8166.69	0.14	8166.69	FAIL
SEC.08-T06N-R64W	SLOT#11 FRANCIS #22-8 (05-123-22515)	FRANCIS #22-8 (05-123-22515)	FRANCIS #22-8 AWB	FRANCIS #22-8 AWP	Drilling	6094.51	1737.90	6094.51	6890.15	0.22	6890.15	FAIL
SEC.08-T06N-R64W	SLOT#15 GRADY #1 (05-123-14810)	GRADY #1 (05-123-14810)	GRADY #1 AWB	GRADY #1 AWP	Drilling	2767.33	1219.82	2767.33	6772.77	0.24	6772.77	FAIL
SEC.32-T07N-R64W	SLOT#07 WESTERMAN #32-11 (05-123-26380)	WESTERMAN #32-11 (05-123-26380)	WESTERMAN #32-11 AWB	WESTERMAN #32-11 AWP	Drilling	17517.09	2702.91	17517.09	17517.42	0.32	17517.42	FAIL
SEC.05-T06N-R64W	SLOT#03 OWL CREEK #7 (05-123-11929)	OWL CREEK #7 (05-123-11929)	OWL CREEK #7 AWB	OWL CREEK #7 AWP	Drilling	9559.50	2953.08	9559.50	9559.60	0.34	9559.60	FAIL
SEC.05-T06N-R64W	SLOT#12 OWL CREEK #7-5 (05-123-27175)	OWL CREEK #7-5 (05-123-27175)	OWL CREEK #7-5 AWB	OWL CREEK #7-5 AWP	Drilling	8182.26	2987.68	8182.26	8182.31	0.35	8182.31	FAIL
SEC.32-T07N-R64W	SLOT#11 SCOTT #32-14 (05-123-26379)	SCOTT #32-14 (05-123-26379)	SCOTT #32-14 AWB	SCOTT #32-14 AWP	Drilling	16211.57	3096.30	16211.57	16211.94	0.36	16211.94	FAIL
SEC.07-T06N-R64W	SLOT#37 DYER #42-7 (05-123-13959)	DYER #42-7 (05-123-13959)	DYER #42-7 AWB	DYER #42-7 AWP (05-123-13959)	Drilling	30.00	1122.64	500.00	6873.23	0.37	6873.23	FAIL
SEC.08-T06N-R64W	SLOT#08 UHRICH #33-8 (05-123-20467)	UHRICH #33-8 (05-123-20467)	UHRICH #33-8 AWB	UHRICH #33-8 AWP	Drilling	6830.00	3552.81	6830.00	7111.51	0.44	7111.51	FAIL
SEC.07-T06N-R64W	SLOT#41 Ehrlich #32-7 (05-123-20196)	Ehrlich #32-7 (05-123-20196)	Ehrlich #32-7 AWB	Ehrlich #32-7 AWP	Drilling	30.00	1807.26	500.00	7015.83	0.48	7015.83	FAIL
SEC.08-T06N-R64W	SLOT#04 UHRICH #43-8 (05-123-21656)	UHRICH #43-8 (05-123-21656)	UHRICH #43-8 AWB	UHRICH #43-8 AWP	Drilling	6930.00	4459.75	6930.00	7253.57	0.54	7253.57	FAIL
SEC.07-T06N-R64W	SLOT#35 CARLSON #33-7 (05-123-19548)	CARLSON #33-7 (05-123-19548)	CARLSON #33-7 AWB	CARLSON #33-7 AWP	Drilling	130.00	2627.25	500.00	7041.61	0.56	7041.61	FAIL
SEC.32-T07N-R64W	SLOT#17 CECIL #32-34 (05-123-23809)	CECIL #32-34 (05-123-23809)	CECIL #32-34 AWB	CECIL #32-34 AWP	Drilling	13387.00	74.87	13387.00	13392.95	0.57	13392.95	FAIL
SEC.08-T06N-R64W	SLOT#16 UHRICH #34-8 (05-123-14446)	UHRICH #34-8 (05-123-14446)	UHRICH #34-8 AWB	UHRICH #34-8 AWP	Drilling	6788.71	4776.26	6788.71	7150.56	0.59	7150.56	FAIL
SEC.07-T06N-R64W	SLOT#30 KREPS #21-7 (05-123-20207)	KREPS #21-7 (05-123-20207)	KREPS #21-7 AWB	KREPS #21-7 AWP	Drilling	30.00	2969.95	500.00	7500.45	0.60	7500.45	FAIL
SEC.07-T06N-R64W	SLOT#38 EHRLICH #22-7 (05-123-14184)	EHRLICH #22-7 (05-123-14184)	EHRLICH #22-7 AWB	EHRLICH #22-7 AWP	Drilling	130.00	3512.50	500.00	7257.42	0.69	7257.42	FAIL
SEC.07-T06N-R64W	SLOT#32 EHRLICH #3 (05-123-12737)	EHRLICH #3 (05-123-12737)	EHRLICH #3 AWB	EHRLICH #3 AWP	Drilling	130.00	3643.26	500.00	7193.55	0.70	7193.55	FAIL
SEC.07-T06N-R64W	SLOT#34 KREPS #11-7 (05-123-14166)	KREPS #11-7 (05-123-14166)	KREPS #11-7 AWB	KREPS #11-7 AWP	Drilling	30.00	4098.33	500.00	7562.27	0.74	7562.27	FAIL
SEC.07-T06N-R64W	SLOT#42 EHRLICH #4 (05-123-12738)	EHRLICH #4 (05-123-12738)	EHRLICH #4 AWB	EHRLICH #4 AWP	Drilling	30.00	4122.12	500.00	7387.12	0.76	7387.12	FAIL
SEC.05-T06N-R64W	SLOT#13 DYER USX A #05-14 (05-123-33405)	DYER USX A #05-14 (05-123-33405)	DYER USX A #05-14 AWB	DYER USX A #05-14 AWP	Drilling	8165.40	284.78	8165.40	8166.59	0.95	8166.59	FAIL
SEC.32-T07N-R64W	SLOT#06 MCCRORY #1 (05-123-07160)	MCCRORY #1 (05-123-07160)	MCCRORY #1 AWB	MCCRORY #1 AWP	Drilling	16625.50	4056.63	16625.50	17144.78	1.15	17144.78	PASS
SEC.05-T06N-R64W	SLOT#02 ROUSE USX A #05-03 (05-123-30349)	ROUSE USX A #05-03 (05-123-30349)	ROUSE USX A #05-03 AWB	ROUSE USX A #05-03 AWP	Drilling	11957.12	438.90	11957.12	11964.47	1.36	11964.47	PASS

REFERENCE WELLPATH IDENTIFICATION

Operator	NOBLE ENERGY, INC	Well	BISHOP A05-764
Field	WELD COUNTY (NOBLE NAD 83 GRID)	API/Legal	
Facility	SEC.07-T06N-R64W	Wellbore	BISHOP A05-764 PWB
Slot	SLOT#27 BISHOP A05-764 (1011'FNL & 396'FEL,SEC.07)		

CALCULATION RANGE & CUTOFF

From: 30.00ft MD	To: 17823.41ft MD	C-C Cutoff: (none)
------------------	-------------------	--------------------

OFFSET WELL CLEARANCE SUMMARY (91 Offset Wellpaths selected) Ratios are calculated in Closest Approach plane

Offset Facility	Offset Slot	Offset Well	Offset Wellbore	Offset Wellpath	Wellbore Status	C-C Clearance Distance			Rule Separation Ratio			
						Ref MD [ft]	Min C-C Clear Dist [ft]	Diverging from MD [ft]	Ref MD of Min Ratio [ft]	Min Ratio	Min Ratio Dvrg from [ft]	Rule Status
SEC.05-T06N-R64W	SLOT#07 ROUSE-USX A #5-19 (05-123-24697)	ROUSE-USX A #5-19 (05-123-24697)	ROUSE-USX A #5-19 AWB	ROUSE-USX A #5-19 AWP	Drilling	11464.88	441.28	11464.88	11461.09	1.52	11461.09	PASS
SEC.07-T06N-R64W	SLOT#28 BISHOP A05-755 (1012'FNL & 373'FEL,SEC.07)	BISHOP A05-755	BISHOP A05-755 PWB	BISHOP A05-755 (REV-C.0) PWP	Planned	30.00	22.53	12830.00	1535.32	1.72	17823.41	PASS
SEC.07-T06N-R64W	SLOT#01 BISHOP A08-685 (860'FNL & 439'FEL,SEC.07)	BISHOP A08-685	BISHOP A08-685 PWB	BISHOP A08-685 (REV-C.0) PWP	Planned	7174.09	130.66	7174.09	7207.46	1.81	7207.46	PASS
SEC.07-T06N-R64W	SLOT#26 BISHOP A05-773 (1011'FNL & 418'FEL,SEC.07)	BISHOP A05-773	BISHOP A05-773 PWB	BISHOP A05-773 (REV-C.0) PWP	Planned	30.00	22.53	17823.41	1249.80	2.10	17823.41	PASS
SEC.08-T06N-R64W	SLOT#03 FRANCIS #21-8 (05-123-27380)	FRANCIS #21-8 (05-123-27380)	FRANCIS #21-8 AWB	FRANCIS #21-8 AWP	Drilling	7020.22	271.60	7020.22	7040.21	3.49	7040.21	PASS
SEC.05-T06N-R64W	SLOT#15 ROUSE USX A #05-05 (05-123-29403)	ROUSE USX A #05-05 (05-123-29403)	ROUSE USX A #05-05 AWB	ROUSE USX A #05-05 AWP	Drilling	10631.26	1198.91	10631.26	10631.57	4.33	10631.57	PASS
SEC.08-T06N-R64W	SLOT#07 FRANCIS #11-8 (05-123-22517)	FRANCIS #11-8 (05-123-22517)	FRANCIS #11-8 AWB	FRANCIS #11-8 AWP	Drilling	3871.64	251.44	3871.64	3929.62	4.52	3929.62	PASS
SEC.05-T06N-R64W	SLOT#11 ROUSE USX A #05-06 (05-123-29405)	ROUSE USX A #05-06 (05-123-29405)	ROUSE USX A #05-06 AWB	ROUSE USX A #05-06 AWP	Drilling	10605.75	470.43	10605.75	10656.14	4.81	10656.14	PASS
SEC.07-T06N-R64W	SLOT#25 BISHOP A05-783 (1010'FNL & 441'FEL,SEC.07)	BISHOP A05-783	BISHOP A05-783 PWB	BISHOP A05-783 (REV-C.0) PWP	Planned	30.00	45.06	17823.41	1026.10	4.87	17823.41	PASS
SEC.05-T06N-R64W	SLOT#14 ROUSE USX A #05-07 (05-123-29422)	ROUSE USX A #05-07 (05-123-29422)	ROUSE USX A #05-07 AWB	ROUSE USX A #05-07 AWP	Drilling	10625.69	1630.72	10625.69	10670.25	5.67	10670.25	PASS
SEC.05-T06N-R64W	SLOT#05 ROUSE USX A #05-02 (05-123-29636)	ROUSE USX A #05-02 (05-123-29636)	ROUSE USX A #05-02 AWB	ROUSE USX A #05-02 AWP	Drilling	11969.77	1713.98	11969.77	12031.79	5.88	12031.79	PASS
SEC.32-T07N-R64W	SLOT#10 CECIL #32-32 (05-123-23810)	CECIL #32-32 (05-123-23810)	CECIL #32-32 AWB	CECIL #32-32 AWP	Drilling	14622.12	827.73	14622.12	14605.29	5.97	14605.29	PASS
SEC.08-T06N-R64W	SLOT#06 ERICKSON A #8-2 (05-123-23853)	ERICKSON A #8-2 (05-123-23853)	ERICKSON A #8-2 AWB	ERICKSON A #8-2 AWP	Drilling	7269.25	1671.01	7269.25	7370.56	6.49	7370.56	PASS
SEC.07-T06N-R64W	SLOT#24 BISHOP A06-712 (1010'FNL & 463'FEL,SEC.07)	BISHOP A06-712	BISHOP A06-712 PWB	BISHOP A06-712 (REV-C.0) PWP	Planned	30.00	67.58	17823.41	17823.41	7.78	17823.41	PASS
SEC.07-T06N-R64W	SLOT#04 BISHOP A08-655 (862'FNL & 372'FEL,SEC.07)	BISHOP A08-655	BISHOP A08-655 PWB	BISHOP A08-655 (REV-C.0) PWP	Planned	1245.45	99.07	6830.00	1291.32	7.81	7030.00	PASS
SEC.32-T07N-R64W	SLOT#18 SCOTT #32-13 (05-123-25475)	SCOTT #32-13 (05-123-25475)	SCOTT #32-13 AWB	SCOTT #32-13 AWP	Drilling	15875.75	1409.29	15875.75	16052.77	9.04	16052.77	PASS
SEC.07-T06N-R64W	SLOT#02 BISHOP A08-675 (861'FNL & 417'FEL,SEC.07)	BISHOP A08-675	BISHOP A08-675 PWB	BISHOP A08-675 (REV-C.0) PWP	Planned	879.59	149.85	6930.00	7058.14	9.64	7058.14	PASS
SEC.32-T07N-R64W	SLOT#13 NC Farms #10-32 (05-123-34785)	NC Farms #10-32 (05-123-34785)	NC Farms #10-32 AWB	NC Farms #10-32 AWP	Drilling	14868.36	1526.33	14868.36	14974.81	9.86	14974.81	PASS
SEC.07-T06N-R64W	SLOT#03 BISHOP A08-665 (861'FNL & 394'FEL,SEC.07)	BISHOP A08-665	BISHOP A08-665 PWB	BISHOP A08-665 (REV-C.0) PWP	Planned	1187.87	121.91	6830.00	1268.33	9.91	7030.00	PASS
SEC.08-T06N-R64W	SLOT#14 ERICKSON A #8-7 (05-123-23750)	ERICKSON A #8-7 (05-123-23750)	ERICKSON A #8-7 AWB	ERICKSON A #8-7 AWP	Drilling	6947.39	2454.18	6947.39	7174.75	9.98	7174.75	PASS
SEC.05-T06N-R64W	SLOT#06 ROUSE USX A #05-04 (05-123-29404)	ROUSE USX A #05-04 (05-123-29404)	ROUSE USX A #05-04 AWB	ROUSE USX A #05-04 AWP	Drilling	11978.51	1085.30	11978.51	11974.20	9.99	11974.20	PASS
SEC.07-T06N-R64W	SLOT#23 BISHOP A06-722 (1009'FNL & 486'FEL,SEC.07)	BISHOP A06-722	BISHOP A06-722 PWB	BISHOP A06-722 (REV-C.0) PWP	Planned	30.00	90.11	17823.41	17823.41	10.38	17823.41	PASS
SEC.08-T06N-R64W	SLOT#01 ERICKSON A #8-17 (05-123-23751)	ERICKSON A #8-17 (05-123-23751)	ERICKSON A #8-17 AWB	ERICKSON A #8-17 AWP	Drilling	7143.46	2753.07	7143.46	7331.87	10.70	7331.87	PASS
SEC.05-T06N-R64W	SLOT#10 ROUSE USX A #05-08 (05-123-29423)	ROUSE USX A #05-08 (05-123-29423)	ROUSE USX A #05-08 AWB	ROUSE USX A #05-08 AWP	Drilling	10636.80	2953.97	10636.80	10774.52	10.94	10774.52	PASS
SEC.05-T06N-R64W	SLOT#01 ROUSE USX A #05-01 (05-123-29487)	ROUSE USX A #05-01 (05-123-29487)	ROUSE USX A #05-01 AWB	ROUSE USX A #05-01 AWP	Drilling	12315.47	3108.54	12315.47	12534.92	11.87	12534.92	PASS

REFERENCE WELLPATH IDENTIFICATION

Operator	NOBLE ENERGY, INC	Well	BISHOP A05-764
Field	WELD COUNTY (NOBLE NAD 83 GRID)	API/Legal	
Facility	SEC.07-T06N-R64W	Wellbore	BISHOP A05-764 PWB
Slot	SLOT#27 BISHOP A05-764 (1011'FNL & 396'FEL,SEC.07)		

CALCULATION RANGE & CUTOFF

From: 30.00ft MD	To: 17823.41ft MD	C-C Cutoff: (none)
------------------	-------------------	--------------------

OFFSET WELL CLEARANCE SUMMARY (91 Offset Wellpaths selected) Ratios are calculated in Closest Approach plane

Offset Facility	Offset Slot	Offset Well	Offset Wellbore	Offset Wellpath	Wellbore Status	C-C Clearance Distance			Rule Separation Ratio			
						Ref MD [ft]	Min C-C Clear Dist [ft]	Diverging from MD [ft]	Ref MD of Min Ratio [ft]	Min Ratio	Min Ratio Dvrg from [ft]	Rule Status
SEC.32-T07N-R64W	SLOT#14 NC Farms #15-32 (05-123-34789)	NC Farms #15-32 (05-123-34789)	NC Farms #15-32 AWB	NC Farms #15-32 AWP	Drilling	13441.49	1618.12	13441.49	13683.22	12.58	13683.22	PASS
SEC.05-T06N-R64W	SLOT#08 DYER #13-5 (05-123-21187)	DYER #13-5 (05-123-21187)	DYER #13-5 AWB	DYER #13-5 AWP	Drilling	9642.61	1140.56	9642.61	9644.74	12.87	9644.74	PASS
SEC.07-T06N-R64W	SLOT#22 BISHOP A06-731 (1009'FNL & 508'FEL,SEC.07)	BISHOP A06-731	BISHOP A06-731 PWB	BISHOP A06-731 (REV-B.0) PWP	Planned	30.00	112.63	17823.41	17823.41	12.88	17823.41	PASS
SEC.07-T06N-R64W	SLOT#21 BISHOP A06-740 (1008'FNL & 531'FEL,SEC.07)	BISHOP A06-740	BISHOP A06-740 PWB	BISHOP A06-740 (REV-C.0) PWP	Planned	30.00	135.16	17823.41	17823.41	15.49	17823.41	PASS
SEC.32-T07N-R64W	SLOT#16 NC Farms #20-32 (05-123-34793)	NC Farms #20-32 (05-123-34793)	NC Farms #20-32 AWB	NC Farms #20-32 AWP	Drilling	14087.00	2300.66	14087.00	14464.66	16.44	14464.66	PASS
SEC.05-T06N-R64W	SLOT#16 ERICKSON #5-43 (05-123-18513)	ERICKSON #5-43 (05-123-18513)	ERICKSON #5-43 AWB	ERICKSON #5-43 AWP	Drilling	8122.89	1428.81	8122.89	8303.98	17.67	8303.98	PASS
SEC.07-T06N-R64W	SLOT#20 BRASKALAND A06-756 (642'FNL & 320'FWL,SEC.07)	BRASKALAND A06-756	BRASKALAND A06-756 PWB	BRASKALAND A06-756 (REV-C.0) PWP	Planned	5727.94	4216.76	17823.41	17823.41	18.22	17823.41	PASS
SEC.07-T06N-R64W	SLOT#16 BISHOP A18-715 (860'FNL & 462'FEL,SEC.07)	BISHOP A18-715	BISHOP A18-715 PWB	BISHOP A18-715 (REV-C.0) PWP	Planned	30.00	164.71	6630.00	952.62	18.76	6930.00	PASS
SEC.32-T07N-R64W	SLOT#15 NC Farms #9-32 (05-123-34790)	NC Farms #9-32 (05-123-34790)	NC Farms #9-32 AWB	NC Farms #9-32 AWP	Drilling	14729.18	2925.37	14729.18	15282.15	19.10	15282.15	PASS
SEC.07-T06N-R64W	SLOT#19 BRASKALAND A06-765 (665'FNL & 319'FWL,SEC.07)	BRASKALAND A06-765	BRASKALAND A06-765 PWB	BRASKALAND A06-765 (REV-C.0) PWP	Planned	30.00	4289.95	17823.41	17823.41	20.79	17823.41	PASS
SEC.07-T06N-R64W	SLOT#15 BISHOP A18-724 (859'FNL & 484'FEL,SEC.07)	BISHOP A18-724	BISHOP A18-724 PWB	BISHOP A18-724 (REV-C.0) PWP	Planned	30.00	175.16	500.00	830.00	21.51	6930.00	PASS
SEC.32-T07N-R64W	SLOT#12 NC Farms #16-32 (05-123-34782)	NC Farms #16-32 (05-123-34782)	NC Farms #16-32 AWB	NC Farms #16-32 AWP	Drilling	13461.61	2946.43	13461.61	14146.47	22.45	14146.47	PASS
SEC.05-T06N-R64W	SLOT#09 ROUSE-USX A #5-17 (05-123-24696)	ROUSE-USX A #5-17 (05-123-24696)	ROUSE-USX A #5-17 AWB	ROUSE-USX A #5-17 AWP	Drilling	11438.82	2492.31	11438.82	12032.90	23.08	12032.90	PASS
SEC.07-T06N-R64W	SLOT#14 BISHOP A18-733 (859'FNL & 507'FEL,SEC.07)	BISHOP A18-733	BISHOP A18-733 PWB	BISHOP A18-733 (REV-C.0) PWP	Planned	30.00	187.54	7930.00	830.00	23.16	7230.00	PASS
SEC.07-T06N-R64W	SLOT#18 BRASKALAND A06-773 (687'FNL & 319'FWL,SEC.07)	BRASKALAND A06-773	BRASKALAND A06-773 PWB	BRASKALAND A06-773 (REV-C.0) PWP	Planned	30.00	4288.69	17823.41	17823.41	23.46	17823.41	PASS
SEC.07-T06N-R64W	SLOT#13 BISHOP A18-742 (858'FNL & 529'FEL,SEC.07)	BISHOP A18-742	BISHOP A18-742 PWB	BISHOP A18-742 (REV-C.0) PWP	Planned	30.00	201.96	7830.00	830.00	24.93	8530.00	PASS
SEC.07-T06N-R64W	SLOT#17 BRASKALAND A06-782 (710'FNL & 319'FWL,SEC.07)	BRASKALAND A06-782	BRASKALAND A06-782 PWB	BRASKALAND A06-782 (REV-C.0) PWP	Planned	30.00	4287.58	17823.41	17823.41	26.08	17823.41	PASS
SEC.07-T06N-R64W	SLOT#05 CARLSON A08-645 (1424'FSL & 919'FEL,SEC.07)	CARLSON A08-645	CARLSON A08-645 PWB	CARLSON A08-645 (REV-C.0) PWP	Planned	6794.67	2578.82	6794.67	6925.10	31.20	6925.10	PASS
SEC.07-T06N-R64W	SLOT#29 DYER #41-7 (05-123-20669)	DYER #41-7 (05-123-20669)	DYER #41-7 AWB	DYER #41-7 AWP	Drilling	30.00	428.90	30.00	2638.40	35.38	6767.85	PASS
SEC.08-T06N-R64W	SLOT#02 ERICKSON A #8-1 (05-123-23826)	ERICKSON A #8-1 (05-123-23826)	ERICKSON A #8-1 AWB	ERICKSON A #8-1 AWP	Drilling	7360.83	2899.13	7360.83	7668.51	36.61	7668.51	PASS
SEC.07-T06N-R64W	SLOT#06 CARLSON A08-635 (1423'FSL & 882'FEL,SEC.07)	CARLSON A08-635	CARLSON A08-635 PWB	CARLSON A08-635 (REV-C.0) PWP	Planned	30.00	2879.17	6767.85	6981.03	39.61	6981.03	PASS
SEC.08-T06N-R64W	SLOT#05 FRANCEN #23-8 (05-123-21958)	FRANCEN #23-8 (05-123-21958)	FRANCEN #23-8 AWB	FRANCEN #23-8 AWP	Drilling	4961.94	3018.84	4961.94	6929.88	40.11	6929.88	PASS
SEC.08-T06N-R64W	SLOT#09 MILE HIGH SHEEP #8-32 (05-123-23451)	MILE HIGH SHEEP #8-32 (05-123-23451)	MILE HIGH SHEEP #8-32 AWB	MILE HIGH SHEEP #8-32 AWP	Drilling	1427.46	2607.21	1427.46	6830.00	43.04	6830.00	PASS
SEC.08-T06N-R64W	SLOT#10 ERICKSON A #8-8 (05-123-23752)	ERICKSON A #8-8 (05-123-23752)	ERICKSON A #8-8 AWB	ERICKSON A #8-8 AWP	Drilling	7074.72	3623.40	7074.72	7373.05	46.35	7373.05	PASS
SEC.08-T06N-R64W	SLOT#18 MILE-HI SHEEP #8-35 (05-123-24252)	MILE-HI SHEEP #8-35 (05-123-24252)	MILE-HI SHEEP #8-35 AWB	MILE-HI SHEEP #8-35 AWP	Drilling	2535.21	3213.83	2535.21	6865.03	47.17	6865.03	PASS

REFERENCE WELLPATH IDENTIFICATION

Operator	NOBLE ENERGY, INC	Well	BISHOP A05-764
Field	WELD COUNTY (NOBLE NAD 83 GRID)	API/Legal	
Facility	SEC.07-T06N-R64W	Wellbore	BISHOP A05-764 PWB
Slot	SLOT#27 BISHOP A05-764 (1011'FNL & 396'FEL,SEC.07)		

CALCULATION RANGE & CUTOFF

From: 30.00ft MD	To: 17823.41ft MD	C-C Cutoff: (none)
------------------	-------------------	--------------------

OFFSET WELL CLEARANCE SUMMARY (91 Offset Wellpaths selected) Ratios are calculated in Closest Approach plane

Offset Facility	Offset Slot	Offset Well	Offset Wellbore	Offset Wellpath	Wellbore Status	C-C Clearance Distance			Rule Separation Ratio			
						Ref MD [ft]	Min C-C Clear Dist [ft]	Diverging from MD [ft]	Ref MD of Min Ratio [ft]	Min Ratio	Min Ratio Dvrg from [ft]	Rule Status
SEC.07-T06N-R64W	SLOT#07 CARLSON A08-625 (1423'FSL & 844'FEL,SEC.07)	CARLSON A08-625	CARLSON A08-625 PWB	CARLSON A08-625 (REV-C.0) PWP	Planned	30.00	2873.25	6767.85	7025.65	47.84	7025.65	PASS
SEC.08-T06N-R64W	SLOT#17 MILE HIGH SHEEP #8-33 (05-123-23128)	MILE HIGH SHEEP #8-33 (05-123-23128)	MILE HIGH SHEEP #8-33 AWB	MILE HIGH SHEEP #8-33 AWP	Drilling	250.00	3536.33	530.00	6903.04	54.32	6903.04	PASS
SEC.07-T06N-R64W	SLOT#33 KREPS #1 (05-123-12736)	KREPS #1 (05-123-12736)	KREPS #1 AWB	KREPS #1 AWP	Drilling	511.38	1539.79	511.38	7330.00	54.56	7330.00	PASS
SEC.07-T06N-R64W	SLOT#08 CARLSON A08-615 (1422'FSL & 807'FEL,SEC.07)	CARLSON A08-615	CARLSON A08-615 PWB	CARLSON A08-615 (REV-C.0) PWP	Planned	30.00	2867.37	6730.00	7060.34	55.59	7060.34	PASS
SEC.08-T06N-R64W	SLOT#13 FRANCEN #24-8 (05-123-14232)	FRANCEN #24-8 (05-123-14232)	FRANCEN #24-8 AWB	FRANCEN #24-8 AWP	Drilling	5081.67	4374.38	5081.67	6977.97	57.69	6977.97	PASS
SEC.07-T06N-R64W	SLOT#31 ROY CARLSON #43-7 (05-123-21867)	ROY CARLSON #43-7 (05-123-21867)	ROY CARLSON #43-7 AWB	ROY CARLSON #43-7 AWP	Drilling	30.00	2298.50	30.00	6933.37	59.26	6933.37	PASS
SEC.07-T06N-R64W	SLOT#12 BRASKALAND A18-755 (800'FNL & 319'FWL,SEC.07)	BRASKALAND A18-755	BRASKALAND A18-755 PWB	BRASKALAND A18-755 (REV-C.0) PWP	Planned	5795.99	4096.90	5795.99	6405.99	65.05	8130.00	PASS
SEC.08-T06N-R64W	SLOT#12 UHRICH #44-8 (05-123-14418)	UHRICH #44-8 (05-123-14418)	UHRICH #44-8 AWB	UHRICH #44-8 AWP	Drilling	6830.00	5415.40	6830.00	7159.02	69.71	7159.02	PASS
SEC.07-T06N-R64W	SLOT#11 BRASKALAND A18-764 (777'FNL & 319'FWL,SEC.07)	BRASKALAND A18-764	BRASKALAND A18-764 PWB	BRASKALAND A18-764 (REV-C.0) PWP	Planned	30.00	4285.37	5630.00	8868.15	75.53	8868.15	PASS
SEC.07-T06N-R64W	SLOT#39 CARLSON #44-7 (05-123-14171)	CARLSON #44-7 (05-123-14171)	CARLSON #44-7 AWB	CARLSON #44-7 AWP (05-123-14171)	Drilling	30.00	3517.02	30.00	7014.62	76.54	7014.62	PASS
SEC.07-T06N-R64W	SLOT#10 BRASKALAND A18-773 (755'FNL & 319'FWL,SEC.07)	BRASKALAND A18-773	BRASKALAND A18-773 PWB	BRASKALAND A18-773 (REV-C.0) PWP	Planned	30.00	4284.58	500.00	9688.31	84.32	9688.31	PASS
SEC.07-T06N-R64W	SLOT#43 CARLSON #34-7 (05-123-14251)	CARLSON #34-7 (05-123-14251)	CARLSON #34-7 AWB	CARLSON #34-7 AWP	Drilling	405.87	3944.41	405.87	7090.71	86.93	7090.71	PASS
SEC.07-T06N-R64W	SLOT#09 BRASKALAND A18-782 (732'FNL & 319'FWL,SEC.07)	BRASKALAND A18-782	BRASKALAND A18-782 PWB	BRASKALAND A18-782 (REV-C.0) PWP	Planned	30.00	4283.93	500.00	10585.01	91.42	10585.01	PASS
SEC.07-T06N-R64W	SLOT#40 EHRLICH #24-7 (05-123-20469)	EHRLICH #24-7 (05-123-20469)	EHRLICH #24-7 AWB	EHRLICH #24-7 AWP	Drilling	316.31	4623.19	316.31	7141.06	100.71	7141.06	PASS
SEC.07-T06N-R64W	SLOT#36 EHRLICH #1 (05-123-12382)	EHRLICH #1 (05-123-12382)	EHRLICH #1 AWB	EHRLICH #1 AWP	Drilling	72.00	4627.40	72.00	7322.57	105.76	7322.57	PASS
SEC.07-T06N-R64W	SLOT#44 EHRLICH #2 (05-123-12460)	EHRLICH #2 (05-123-12460)	EHRLICH #2 AWB	EHRLICH #2 AWP	Drilling	515.21	5450.30	515.21	7230.00	114.08	7230.00	PASS