

# NOBLE ENERGY, INC



Location: COLORADO Slot: SLOT#28 BISHOP A05-755 (1012FNL & 373FEL, SEC.07)  
 Field: WELD COUNTY (NOBLE NAD 83 GRID) Well: BISHOP A05-755  
 Facility: SEC.07-T06N-R64W Wellbore: BISHOP A05-755 PWB

Plot reference wellpath is BISHOP A05-755 (REV-C.0) PWP  
 Grid System: NAD83 / Lambert Colorado SP, Northern Zone (501), US feet  
 True vertical depths are referenced to RIG (4745GL+30KB@4775RKB) (RKB)  
 North Reference: Grid north  
 Reference wellpath measured depths are referenced to RIG (4745GL+30KB@4775RKB) (RKB)  
 Scale: True distance  
 RIG (4745GL+30KB@4775RKB) to Mean Sea Level: 4775 feet  
 Coordinates are in feet referenced to Slot  
 Mean Sea Level to Ground level (At Slot: SLOT#28 BISHOP A05-755 (1012FNL & 373FEL, SEC.07)): 0 feet  
 Depths are in feet  
 Offset wellpath MDs are referenced to each path's default MD datum  
 Created by: martsam01 on 2023-10-06; Database: WA, Denver

### Location Information

Facility Name		Grid East (US ft)	Grid North (US ft)	Latitude	Longitude	
SEC.07-T06N-R64W		3254380.716	1428262.611	40°30'19.3680"N	104°36'6.7200"W	
Slot	Local N (ft)	Local E (ft)	Grid East (US ft)	Grid North (US ft)	Latitude	Longitude
SLOT#28 BISHOP A05-755 (1012FNL & 373FEL, SEC.07)	-149.67	51.60	3254432.316	1428113.042	40°30'17.8848"N	104°36'6.0720"W
RIG (4745GL+30KB@4775RKB) (RKB) to Ground level (At Slot: SLOT#28 BISHOP A05-755 (1012FNL & 373FEL, SEC.07))						4775ft
Mean Sea Level to Ground level (At Slot: SLOT#28 BISHOP A05-755 (1012FNL & 373FEL, SEC.07))						0ft
RIG (4745GL+30KB@4775RKB) (RKB) to Mean Sea Level						4775ft

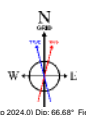
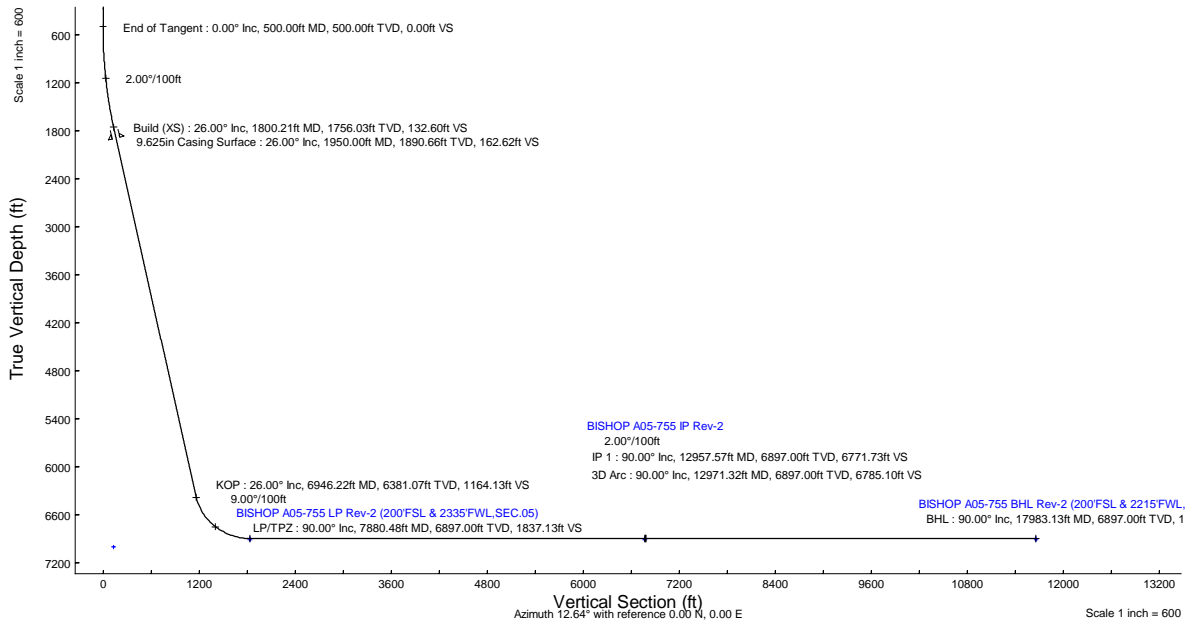
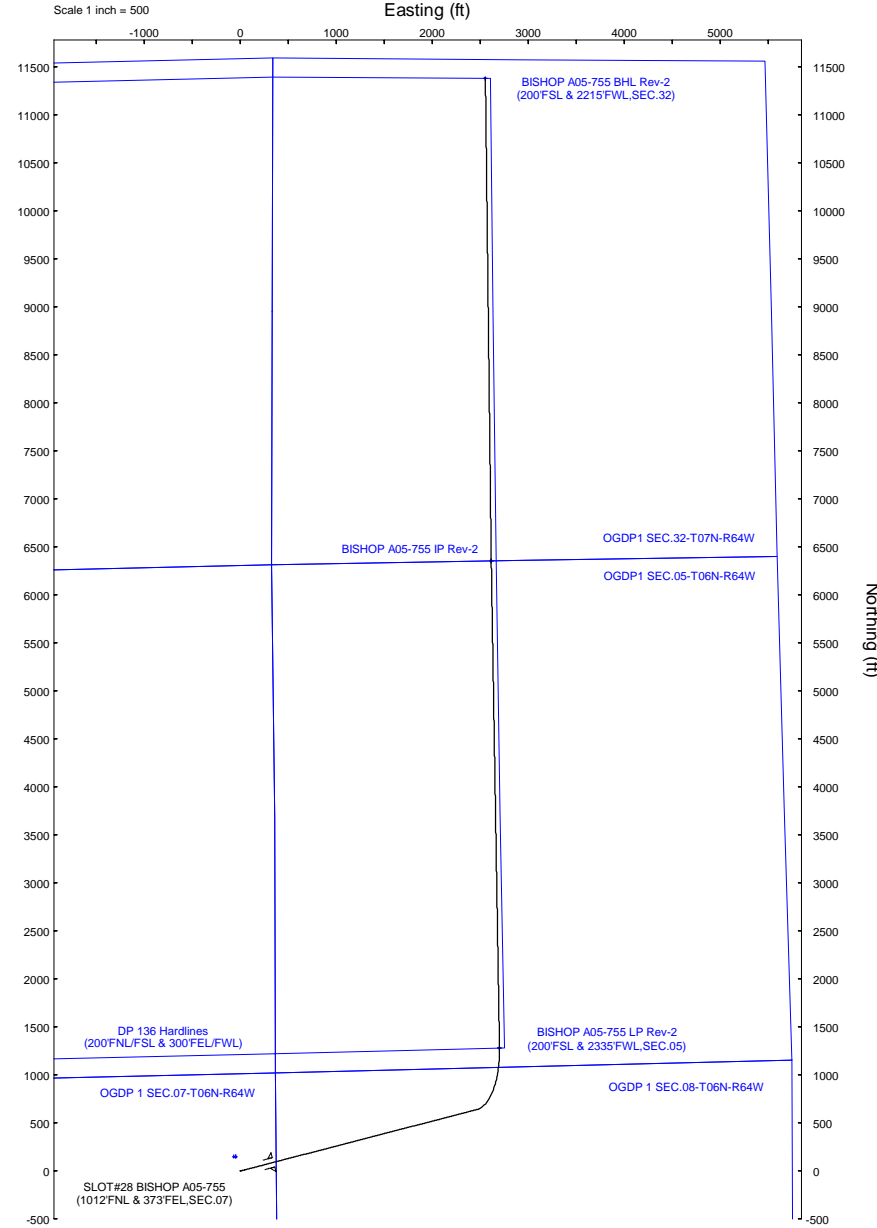
### Well Profile Data

Design Comment	MD (ft)	Inc (°)	Az (°)	TVD (ft)	Local N (ft)	Local E (ft)	DLS (°/100ft)	VS (ft)
SHL	30.00	0.000	75.432	30.00	0.00	0.00	0.00	0.00
End of Tangent	500.00	0.000	75.432	500.00	0.00	0.00	0.00	0.00
Build (XS)	1800.21	26.004	75.432	1756.03	72.95	280.70	2.00	132.60
KOP	6946.22	26.004	75.432	6381.07	640.46	2464.37	0.00	1164.13
LP/TPZ	7880.48	90.000	359.031	6897.00	1277.74	2698.25	9.00	1837.13
IP 1	12957.57	90.000	359.031	6897.00	6354.11	2612.40	0.00	6771.73
3D Arc	12971.32	90.000	359.306	6897.00	6367.86	2612.20	2.00	6795.10
BHL	17983.13	90.000	359.306	6897.00	11379.29	2551.50	0.00	11661.84

### Targets

Name	MD (ft)	TVD (ft)	Local N (ft)	Local E (ft)	Grid East (US ft)	Grid North (US ft)	Latitude	Longitude
OGDP 1 SEC.07-T06N-R64W	N/A	3.00	149.67	-51.60	3254380.72	1428262.61	40°30'19.3680"N	104°36'6.7200"W
OGDP 1 SEC.08-T06N-R64W	N/A	3.00	149.67	-51.60	3254380.72	1428262.61	40°30'19.3680"N	104°36'6.7200"W
OGDP1 SEC.05-T06N-R64W	N/A	21.00	168.01	-4303.96	3250128.51	1428281.04	40°30'19.9800"N	104°36'1.7640"W
OGDP1 SEC.06-T06N-R64W	N/A	21.00	168.01	-4303.96	3250128.51	1428281.04	40°30'19.9800"N	104°36'1.7640"W
OGDP1 SEC.31-T07N-R64W	N/A	21.00	168.01	-4303.96	3250128.51	1428281.04	40°30'19.9800"N	104°36'1.7640"W
OGDP1 SEC.32-T07N-R64W	N/A	21.00	168.01	-4303.96	3250128.51	1428281.04	40°30'19.9800"N	104°36'1.7640"W
BISHOP A05-755 BHL Rev-2 (200FSL & 2215FWL, SEC.32)	17983.13	6897.00	11379.29	2551.50	3256983.73	1439491.93	40°32'10.0608"N	104°34'31.5074"W
BISHOP A05-755 IP Rev-2	12957.57	6897.00	6354.11	2612.40	3257044.62	1434466.93	40°31'20.4014"N	104°34'31.3974"W
BISHOP A05-755 LP Rev-2 (200FSL & 2335FWL, SEC.05)	7880.48	6897.00	1277.74	2698.25	3257130.47	1429390.73	40°30'30.2334"N	104°34'30.9712"W
BISHOP A05-755 BHL Rev-1 (200FSL & 2215FWL, SEC.32)	N/A	6915.00	11379.29	2551.50	3256983.73	1439491.93	40°32'10.0608"N	104°34'31.5074"W
BISHOP A05-755 IP 1	N/A	6915.00	6354.11	2612.40	3257044.62	1434466.93	40°31'20.4014"N	104°34'31.3974"W
BISHOP A05-755 LP Rev-1 (200FSL & 2335FWL, SEC.05)	N/A	6915.00	1277.74	2698.25	3257130.47	1429390.73	40°30'30.2334"N	104°34'30.9712"W
DP 136 Hardlines (200FNL/FSL & 300FEL/FWL)	N/A	7004.00	149.77	-67.73	3254364.58	1428262.61	40°30'19.3716"N	104°36'6.9288"W

Survey Program					
Start MD (ft)	End MD (ft)	Tool	Model	Log Name/Comment	Wellbore
30.00	1950.00	OWSG MWD rev2	OWSG MWD rev2 (MS+IFR1)		BISHOP A05-755 PWB
1950.00	18186.22	OWSG MWD rev2	OWSG MWD rev2 (MS+IFR1)		BISHOP A05-755 PWB



BGGM (1900.0 to 2024.0) Dip: 66.68° Field: 51663.1 ± 1  
 Magnetic North is 7.36 degrees East of True North (at 10/4/2023)  
 Grid North is 0.59 degrees East of True North  
 To correct azimuth from True to Grid subtract 68 degrees  
 To correct azimuth from Magnetic to Grid add 6.79 degrees

## REFERENCE WELLPATH IDENTIFICATION

Operator	NOBLE ENERGY, INC	Well	BISHOP A05-755
Field	WELD COUNTY (NOBLE NAD 83 GRID)	API/Legal	
Facility	SEC.07-T06N-R64W	Wellbore	BISHOP A05-755 PWB
Slot	SLOT#28 BISHOP A05-755 (1012'FNL & 373'FEL,SEC.07)		

## REPORT SETUP INFORMATION

Projection System	NAD83 / Lambert Colorado SP, Northern Zone (501), US feet	Software System	WellArchitect® 6.0
North Reference	Grid	User	Martsam01
Scale	0.999967	Report Generated	10/6/2023 at 6:10:20 PM
Convergence at slot	0.59° East	Database	WA_Denver

## WELLPATH LOCATION

	Local coordinates		Grid coordinates		Geographic coordinates	
	North[ft]	East[ft]	Easting[US ft]	Northing[US ft]	Latitude	Longitude
Slot Location	-149.57	51.60	3254432.32	1428113.04	40.5049680°	-104.5850200°
Facility Reference Pt			3254380.72	1428262.61	40.5053800°	-104.5852000°
Field Reference Pt			3000000.00	4454105.15	48.7761986°	-105.5000000°

## WELLPATH DATUM

Calculation method	Minimum curvature	RIG (4745'GL+30'KB@4775'RKB) (RKB) to Facility Vertical Datum	4775.00ft
Horizontal Reference Pt	Slot	RIG (4745'GL+30'KB@4775'RKB) (RKB) to Mean Sea Level	4775.00ft
Vertical Reference Pt	RIG (4745'GL+30'KB@4775'RKB) (RKB)	RIG (4745'GL+30'KB@4775'RKB) (RKB) to Ground Level at Slot (SLOT#28 BISHOP A05-755 (1012'FNL & 373'FEL,SEC.07))	4775.00ft
MD Reference Pt	RIG (4745'GL+30'KB@4775'RKB) (RKB)	Section Origin	N 0.00, E 0.00 ft
Field Vertical Reference	Mean Sea Level	Section Azimuth	12.64°

REFERENCE WELLPATH IDENTIFICATION			
Operator	NOBLE ENERGY, INC	Well	BISHOP A05-755
Field	WELD COUNTY (NOBLE NAD 83 GRID)	API/Legal	
Facility	SEC.07-T06N-R64W	Wellbore	BISHOP A05-755 PWB
Slot	SLOT#28 BISHOP A05-755 (1012'FNL & 373'FEL,SEC.07)		

**WELLPATH DATA (188 stations)** † = interpolated, ‡ = extrapolated station

MD [ft]	Inclination [°]	Azimuth [°]	TVD [ft]	Vert Sect [ft]	North [ft]	East [ft]	Latitude	Longitude	DLS [°/100ft]	Comments
0.00†	0.000	75.432	0.00	0.00	0.00	0.00	40.5049680	-104.5850200	0.00	
30.00	0.000	75.432	30.00	0.00	0.00	0.00	40.5049680	-104.5850200	0.00	SHL
130.00†	0.000	75.432	130.00	0.00	0.00	0.00	40.5049680	-104.5850200	0.00	
230.00†	0.000	75.432	230.00	0.00	0.00	0.00	40.5049680	-104.5850200	0.00	
330.00†	0.000	75.432	330.00	0.00	0.00	0.00	40.5049680	-104.5850200	0.00	
430.00†	0.000	75.432	430.00	0.00	0.00	0.00	40.5049680	-104.5850200	0.00	
500.00	0.000	75.432	500.00	0.00	0.00	0.00	40.5049680	-104.5850200	0.00	End of Tangent
530.00†	0.600	75.432	530.00	0.07	0.04	0.15	40.5049681	-104.5850195	2.00	
630.00†	2.600	75.432	629.96	1.35	0.74	2.85	40.5049700	-104.5850097	2.00	
730.00†	4.600	75.432	729.75	4.22	2.32	8.93	40.5049741	-104.5849878	2.00	
830.00†	6.600	75.432	829.27	8.68	4.78	18.38	40.5049806	-104.5849537	2.00	
930.00†	8.600	75.432	928.39	14.73	8.10	31.17	40.5049894	-104.5849076	2.00	
1030.00†	10.600	75.432	1026.98	22.35	12.30	47.31	40.5050004	-104.5848494	2.00	
1130.00†	12.600	75.432	1124.93	31.54	17.35	66.78	40.5050137	-104.5847792	2.00	
1230.00†	14.600	75.432	1222.13	42.29	23.27	89.53	40.5050293	-104.5846972	2.00	
1330.00†	16.600	75.432	1318.44	54.59	30.03	115.56	40.5050472	-104.5846034	2.00	
1430.00†	18.600	75.432	1413.75	68.41	37.64	144.82	40.5050672	-104.5844979	2.00	
1530.00†	20.600	75.432	1507.95	83.75	46.07	177.29	40.5050894	-104.5843808	2.00	
1630.00†	22.600	75.432	1600.93	100.58	55.33	212.91	40.5051138	-104.5842524	2.00	
1730.00†	24.600	75.432	1692.56	118.88	65.40	251.66	40.5051404	-104.5841127	2.00	
1800.21	26.004	75.432	1756.03	132.60	72.95	280.70	40.5051603	-104.5840079	2.00	Build (XS)
1830.00†	26.004	75.432	1782.80	138.57	76.24	293.34	40.5051689	-104.5839624	0.00	
1930.00†	26.004	75.432	1872.68	158.62	87.26	335.78	40.5051980	-104.5838094	0.00	
2030.00†	26.004	75.432	1962.56	178.66	98.29	378.21	40.5052271	-104.5836564	0.00	
2130.00†	26.004	75.432	2052.43	198.71	109.32	420.64	40.5052561	-104.5835034	0.00	
2230.00†	26.004	75.432	2142.31	218.75	120.35	463.08	40.5052852	-104.5833504	0.00	
2330.00†	26.004	75.432	2232.18	238.80	131.38	505.51	40.5053143	-104.5831974	0.00	
2430.00†	26.004	75.432	2322.06	258.84	142.41	547.95	40.5053433	-104.5830444	0.00	
2530.00†	26.004	75.432	2411.94	278.89	153.43	590.38	40.5053724	-104.5828914	0.00	
2630.00†	26.004	75.432	2501.81	298.93	164.46	632.82	40.5054015	-104.5827384	0.00	
2730.00†	26.004	75.432	2591.69	318.98	175.49	675.25	40.5054305	-104.5825854	0.00	
2830.00†	26.004	75.432	2681.57	339.02	186.52	717.68	40.5054596	-104.5824324	0.00	
2930.00†	26.004	75.432	2771.44	359.07	197.55	760.12	40.5054886	-104.5822794	0.00	
3030.00†	26.004	75.432	2861.32	379.11	208.57	802.55	40.5055177	-104.5821264	0.00	
3130.00†	26.004	75.432	2951.19	399.16	219.60	844.99	40.5055468	-104.5819734	0.00	
3230.00†	26.004	75.432	3041.07	419.20	230.63	887.42	40.5055758	-104.5818204	0.00	
3330.00†	26.004	75.432	3130.95	439.25	241.66	929.85	40.5056049	-104.5816675	0.00	
3430.00†	26.004	75.432	3220.82	459.29	252.69	972.29	40.5056340	-104.5815145	0.00	
3530.00†	26.004	75.432	3310.70	479.34	263.72	1014.72	40.5056630	-104.5813615	0.00	
3630.00†	26.004	75.432	3400.57	499.38	274.74	1057.16	40.5056921	-104.5812085	0.00	
3730.00†	26.004	75.432	3490.45	519.43	285.77	1099.59	40.5057211	-104.5810555	0.00	
3830.00†	26.004	75.432	3580.33	539.47	296.80	1142.02	40.5057502	-104.5809025	0.00	
3930.00†	26.004	75.432	3670.20	559.52	307.83	1184.46	40.5057793	-104.5807495	0.00	
4030.00†	26.004	75.432	3760.08	579.56	318.86	1226.89	40.5058083	-104.5805965	0.00	
4130.00†	26.004	75.432	3849.96	599.61	329.89	1269.33	40.5058374	-104.5804435	0.00	

REFERENCE WELLPATH IDENTIFICATION			
Operator	NOBLE ENERGY, INC	Well	BISHOP A05-755
Field	WELD COUNTY (NOBLE NAD 83 GRID)	API/Legal	
Facility	SEC.07-T06N-R64W	Wellbore	BISHOP A05-755 PWB
Slot	SLOT#28 BISHOP A05-755 (1012'FNL & 373'FEL,SEC.07)		

**WELLPATH DATA (188 stations)** † = interpolated, ‡ = extrapolated station

MD [ft]	Inclination [°]	Azimuth [°]	TVD [ft]	Vert Sect [ft]	North [ft]	East [ft]	Latitude	Longitude	DLS [°/100ft]	Comments
4230.00†	26.004	75.432	3939.83	619.65	340.91	1311.76	40.5058665	-104.5802905	0.00	
4330.00†	26.004	75.432	4029.71	639.70	351.94	1354.20	40.5058955	-104.5801375	0.00	
4430.00†	26.004	75.432	4119.58	659.75	362.97	1396.63	40.5059246	-104.5799845	0.00	
4530.00†	26.004	75.432	4209.46	679.79	374.00	1439.06	40.5059536	-104.5798315	0.00	
4630.00†	26.004	75.432	4299.34	699.84	385.03	1481.50	40.5059827	-104.5796785	0.00	
4730.00†	26.004	75.432	4389.21	719.88	396.05	1523.93	40.5060118	-104.5795255	0.00	
4830.00†	26.004	75.432	4479.09	739.93	407.08	1566.37	40.5060408	-104.5793725	0.00	
4930.00†	26.004	75.432	4568.96	759.97	418.11	1608.80	40.5060699	-104.5792195	0.00	
5030.00†	26.004	75.432	4658.84	780.02	429.14	1651.23	40.5060989	-104.5790665	0.00	
5130.00†	26.004	75.432	4748.72	800.06	440.17	1693.67	40.5061280	-104.5789135	0.00	
5230.00†	26.004	75.432	4838.59	820.11	451.20	1736.10	40.5061571	-104.5787605	0.00	
5330.00†	26.004	75.432	4928.47	840.15	462.22	1778.54	40.5061861	-104.5786075	0.00	
5430.00†	26.004	75.432	5018.35	860.20	473.25	1820.97	40.5062152	-104.5784545	0.00	
5530.00†	26.004	75.432	5108.22	880.24	484.28	1863.41	40.5062442	-104.5783015	0.00	
5630.00†	26.004	75.432	5198.10	900.29	495.31	1905.84	40.5062733	-104.5781485	0.00	
5730.00†	26.004	75.432	5287.97	920.33	506.34	1948.27	40.5063024	-104.5779955	0.00	
5830.00†	26.004	75.432	5377.85	940.38	517.36	1990.71	40.5063314	-104.5778425	0.00	
5930.00†	26.004	75.432	5467.73	960.42	528.39	2033.14	40.5063605	-104.5776895	0.00	
6030.00†	26.004	75.432	5557.60	980.47	539.42	2075.58	40.5063895	-104.5775365	0.00	
6130.00†	26.004	75.432	5647.48	1000.51	550.45	2118.01	40.5064186	-104.5773835	0.00	
6230.00†	26.004	75.432	5737.35	1020.56	561.48	2160.44	40.5064476	-104.5772305	0.00	
6330.00†	26.004	75.432	5827.23	1040.60	572.51	2202.88	40.5064767	-104.5770775	0.00	
6430.00†	26.004	75.432	5917.11	1060.65	583.53	2245.31	40.5065058	-104.5769245	0.00	
6530.00†	26.004	75.432	6006.98	1080.69	594.56	2287.75	40.5065348	-104.5767715	0.00	
6630.00†	26.004	75.432	6096.86	1100.74	605.59	2330.18	40.5065639	-104.5766185	0.00	
6730.00†	26.004	75.432	6186.74	1120.78	616.62	2372.61	40.5065929	-104.5764655	0.00	
6830.00†	26.004	75.432	6276.61	1140.83	627.65	2415.05	40.5066220	-104.5763125	0.00	
6930.00†	26.004	75.432	6366.49	1160.88	638.67	2457.48	40.5066510	-104.5761595	0.00	
6946.22	26.004	75.432	6381.07	1164.13	640.46	2464.37	40.5066557	-104.5761347	0.00	KOP
7030.00†	28.506	59.847	6455.63	1186.14	655.15	2499.48	40.5066950	-104.5760079	9.00	
7130.00†	33.379	45.058	6541.50	1225.65	686.63	2539.67	40.5067803	-104.5758622	9.00	
7230.00†	39.576	34.035	6621.96	1278.64	732.55	2577.04	40.5069053	-104.5757261	9.00	
7330.00†	46.566	25.705	6695.02	1343.80	791.79	2610.69	40.5070669	-104.5756029	9.00	
7430.00†	54.032	19.157	6758.90	1419.53	862.88	2639.78	40.5072612	-104.5754956	9.00	
7530.00†	61.791	13.765	6812.01	1503.96	944.07	2663.59	40.5074833	-104.5754069	9.00	
7630.00†	69.732	9.115	6853.05	1595.02	1033.36	2681.54	40.5077279	-104.5753390	9.00	
7730.00†	77.784	4.923	6881.01	1690.45	1128.55	2693.19	40.5079889	-104.5752936	9.00	
7830.00†	85.896	0.981	6895.19	1787.92	1227.31	2698.25	40.5082598	-104.5752717	9.00	
7880.48	90.000	359.031	6897.00†	1837.13	1277.74	2698.25	40.5083982	-104.5752698	9.00	LP/TPZ
7930.00†	90.000	359.031	6897.00	1885.27	1327.25	2697.41	40.5085341	-104.5752709	0.00	
8030.00†	90.000	359.031	6897.00	1982.46	1427.24	2695.72	40.5088086	-104.5752733	0.00	
8130.00†	90.000	359.031	6897.00	2079.65	1527.23	2694.03	40.5090831	-104.5752756	0.00	
8230.00†	90.000	359.031	6897.00	2176.85	1627.21	2692.34	40.5093576	-104.5752779	0.00	
8330.00†	90.000	359.031	6897.00	2274.04	1727.20	2690.65	40.5096320	-104.5752803	0.00	
8430.00†	90.000	359.031	6897.00	2371.23	1827.18	2688.96	40.5099065	-104.5752826	0.00	

REFERENCE WELLPATH IDENTIFICATION			
Operator	NOBLE ENERGY, INC	Well	BISHOP A05-755
Field	WELD COUNTY (NOBLE NAD 83 GRID)	API/Legal	
Facility	SEC.07-T06N-R64W	Wellbore	BISHOP A05-755 PWB
Slot	SLOT#28 BISHOP A05-755 (1012'FNL & 373'FEL,SEC.07)		

**WELLPATH DATA (188 stations)** † = interpolated, ‡ = extrapolated station

MD [ft]	Inclination [°]	Azimuth [°]	TVD [ft]	Vert Sect [ft]	North [ft]	East [ft]	Latitude	Longitude	DLS [°/100ft]	Comments
8530.00†	90.000	359.031	6897.00	2468.43	1927.17	2687.27	40.5101810	-104.5752849	0.00	
8630.00†	90.000	359.031	6897.00	2565.62	2027.15	2685.58	40.5104555	-104.5752872	0.00	
8730.00†	90.000	359.031	6897.00	2662.81	2127.14	2683.89	40.5107299	-104.5752896	0.00	
8830.00†	90.000	359.031	6897.00	2760.01	2227.13	2682.20	40.5110044	-104.5752919	0.00	
8930.00†	90.000	359.031	6897.00	2857.20	2327.11	2680.50	40.5112789	-104.5752942	0.00	
9030.00†	90.000	359.031	6897.00	2954.39	2427.10	2678.81	40.5115534	-104.5752966	0.00	
9130.00†	90.000	359.031	6897.00	3051.59	2527.08	2677.12	40.5118279	-104.5752989	0.00	
9230.00†	90.000	359.031	6897.00	3148.78	2627.07	2675.43	40.5121023	-104.5753012	0.00	
9330.00†	90.000	359.031	6897.00	3245.97	2727.05	2673.74	40.5123768	-104.5753036	0.00	
9430.00†	90.000	359.031	6897.00	3343.17	2827.04	2672.05	40.5126513	-104.5753059	0.00	
9530.00†	90.000	359.031	6897.00	3440.36	2927.03	2670.36	40.5129258	-104.5753082	0.00	
9630.00†	90.000	359.031	6897.00	3537.55	3027.01	2668.67	40.5132003	-104.5753106	0.00	
9730.00†	90.000	359.031	6897.00	3634.75	3127.00	2666.98	40.5134747	-104.5753129	0.00	
9830.00†	90.000	359.031	6897.00	3731.94	3226.98	2665.29	40.5137492	-104.5753152	0.00	
9930.00†	90.000	359.031	6897.00	3829.13	3326.97	2663.59	40.5140237	-104.5753176	0.00	
10030.00†	90.000	359.031	6897.00	3926.33	3426.95	2661.90	40.5142982	-104.5753199	0.00	
10130.00†	90.000	359.031	6897.00	4023.52	3526.94	2660.21	40.5145726	-104.5753222	0.00	
10230.00†	90.000	359.031	6897.00	4120.71	3626.93	2658.52	40.5148471	-104.5753246	0.00	
10330.00†	90.000	359.031	6897.00	4217.91	3726.91	2656.83	40.5151216	-104.5753269	0.00	
10430.00†	90.000	359.031	6897.00	4315.10	3826.90	2655.14	40.5153961	-104.5753292	0.00	
10530.00†	90.000	359.031	6897.00	4412.29	3926.88	2653.45	40.5156706	-104.5753315	0.00	
10630.00†	90.000	359.031	6897.00	4509.49	4026.87	2651.76	40.5159450	-104.5753339	0.00	
10730.00†	90.000	359.031	6897.00	4606.68	4126.85	2650.07	40.5162195	-104.5753362	0.00	
10830.00†	90.000	359.031	6897.00	4703.87	4226.84	2648.38	40.5164940	-104.5753385	0.00	
10930.00†	90.000	359.031	6897.00	4801.07	4326.83	2646.68	40.5167685	-104.5753409	0.00	
11030.00†	90.000	359.031	6897.00	4898.26	4426.81	2644.99	40.5170430	-104.5753432	0.00	
11130.00†	90.000	359.031	6897.00	4995.45	4526.80	2643.30	40.5173174	-104.5753455	0.00	
11230.00†	90.000	359.031	6897.00	5092.64	4626.78	2641.61	40.5175919	-104.5753479	0.00	
11330.00†	90.000	359.031	6897.00	5189.84	4726.77	2639.92	40.5178664	-104.5753502	0.00	
11430.00†	90.000	359.031	6897.00	5287.03	4826.75	2638.23	40.5181409	-104.5753525	0.00	
11530.00†	90.000	359.031	6897.00	5384.22	4926.74	2636.54	40.5184153	-104.5753549	0.00	
11630.00†	90.000	359.031	6897.00	5481.42	5026.73	2634.85	40.5186898	-104.5753572	0.00	
11730.00†	90.000	359.031	6897.00	5578.61	5126.71	2633.16	40.5189643	-104.5753595	0.00	
11830.00†	90.000	359.031	6897.00	5675.80	5226.70	2631.47	40.5192388	-104.5753619	0.00	
11930.00†	90.000	359.031	6897.00	5773.00	5326.68	2629.77	40.5195133	-104.5753642	0.00	
12030.00†	90.000	359.031	6897.00	5870.19	5426.67	2628.08	40.5197877	-104.5753665	0.00	
12130.00†	90.000	359.031	6897.00	5967.38	5526.65	2626.39	40.5200622	-104.5753689	0.00	
12230.00†	90.000	359.031	6897.00	6064.58	5626.64	2624.70	40.5203367	-104.5753712	0.00	
12330.00†	90.000	359.031	6897.00	6161.77	5726.63	2623.01	40.5206112	-104.5753735	0.00	
12430.00†	90.000	359.031	6897.00	6258.96	5826.61	2621.32	40.5208856	-104.5753759	0.00	
12530.00†	90.000	359.031	6897.00	6356.16	5926.60	2619.63	40.5211601	-104.5753782	0.00	
12630.00†	90.000	359.031	6897.00	6453.35	6026.58	2617.94	40.5214346	-104.5753805	0.00	
12730.00†	90.000	359.031	6897.00	6550.54	6126.57	2616.25	40.5217091	-104.5753828	0.00	
12830.00†	90.000	359.031	6897.00	6647.74	6226.55	2614.56	40.5219836	-104.5753852	0.00	
12930.00†	90.000	359.031	6897.00	6744.93	6326.54	2612.87	40.5222580	-104.5753875	0.00	

REFERENCE WELLPATH IDENTIFICATION			
Operator	NOBLE ENERGY, INC	Well	BISHOP A05-755
Field	WELD COUNTY (NOBLE NAD 83 GRID)	API/Legal	
Facility	SEC.07-T06N-R64W	Wellbore	BISHOP A05-755 PWB
Slot	SLOT#28 BISHOP A05-755 (1012'FNL & 373'FEL,SEC.07)		

**WELLPATH DATA (188 stations)** † = interpolated, ‡ = extrapolated station

MD [ft]	Inclination [°]	Azimuth [°]	TVD [ft]	Vert Sect [ft]	North [ft]	East [ft]	Latitude	Longitude	DLS [°/100ft]	Comments
12957.57	90.000	359.031	6897.00 <sup>‡</sup>	6771.73	6354.11	2612.40	40.5223337	-104.5753882	0.00	IP 1
12971.32	90.000	359.306	6897.00	6785.10	6367.86	2612.20	40.5223715	-104.5753884	2.00	3D Arc
13030.00†	90.000	359.306	6897.00	6842.20	6426.53	2611.49	40.5225325	-104.5753887	0.00	
13130.00†	90.000	359.306	6897.00	6939.50	6526.52	2610.28	40.5228070	-104.5753893	0.00	
13230.00†	90.000	359.306	6897.00	7036.81	6626.52	2609.07	40.5230815	-104.5753899	0.00	
13330.00†	90.000	359.306	6897.00	7134.11	6726.51	2607.86	40.5233560	-104.5753905	0.00	
13430.00†	90.000	359.306	6897.00	7231.42	6826.50	2606.64	40.5236305	-104.5753911	0.00	
13530.00†	90.000	359.306	6897.00	7328.72	6926.49	2605.43	40.5239049	-104.5753917	0.00	
13630.00†	90.000	359.306	6897.00	7426.03	7026.49	2604.22	40.5241794	-104.5753923	0.00	
13730.00†	90.000	359.306	6897.00	7523.33	7126.48	2603.01	40.5244539	-104.5753930	0.00	
13830.00†	90.000	359.306	6897.00	7620.64	7226.47	2601.80	40.5247284	-104.5753936	0.00	
13930.00†	90.000	359.306	6897.00	7717.94	7326.46	2600.59	40.5250029	-104.5753942	0.00	
14030.00†	90.000	359.306	6897.00	7815.25	7426.46	2599.38	40.5252773	-104.5753948	0.00	
14130.00†	90.000	359.306	6897.00	7912.55	7526.45	2598.17	40.5255518	-104.5753954	0.00	
14230.00†	90.000	359.306	6897.00	8009.86	7626.44	2596.96	40.5258263	-104.5753960	0.00	
14330.00†	90.000	359.306	6897.00	8107.16	7726.43	2595.75	40.5261008	-104.5753966	0.00	
14430.00†	90.000	359.306	6897.00	8204.47	7826.43	2594.53	40.5263753	-104.5753972	0.00	
14530.00†	90.000	359.306	6897.00	8301.77	7926.42	2593.32	40.5266498	-104.5753978	0.00	
14630.00†	90.000	359.306	6897.00	8399.08	8026.41	2592.11	40.5269242	-104.5753984	0.00	
14730.00†	90.000	359.306	6897.00	8496.38	8126.41	2590.90	40.5271987	-104.5753990	0.00	
14830.00†	90.000	359.306	6897.00	8593.69	8226.40	2589.69	40.5274732	-104.5753996	0.00	
14930.00†	90.000	359.306	6897.00	8690.99	8326.39	2588.48	40.5277477	-104.5754002	0.00	
15030.00†	90.000	359.306	6897.00	8788.30	8426.38	2587.27	40.5280222	-104.5754008	0.00	
15130.00†	90.000	359.306	6897.00	8885.60	8526.38	2586.06	40.5282967	-104.5754014	0.00	
15230.00†	90.000	359.306	6897.00	8982.91	8626.37	2584.85	40.5285711	-104.5754020	0.00	
15330.00†	90.000	359.306	6897.00	9080.21	8726.36	2583.63	40.5288456	-104.5754026	0.00	
15430.00†	90.000	359.306	6897.00	9177.52	8826.35	2582.42	40.5291201	-104.5754032	0.00	
15530.00†	90.000	359.306	6897.00	9274.82	8926.35	2581.21	40.5293946	-104.5754039	0.00	
15630.00†	90.000	359.306	6897.00	9372.13	9026.34	2580.00	40.5296691	-104.5754045	0.00	
15730.00†	90.000	359.306	6897.00	9469.43	9126.33	2578.79	40.5299436	-104.5754051	0.00	
15830.00†	90.000	359.306	6897.00	9566.74	9226.32	2577.58	40.5302180	-104.5754057	0.00	
15930.00†	90.000	359.306	6897.00	9664.04	9326.32	2576.37	40.5304925	-104.5754063	0.00	
16030.00†	90.000	359.306	6897.00	9761.35	9426.31	2575.16	40.5307670	-104.5754069	0.00	
16130.00†	90.000	359.306	6897.00	9858.65	9526.30	2573.95	40.5310415	-104.5754075	0.00	
16230.00†	90.000	359.306	6897.00	9955.96	9626.30	2572.74	40.5313160	-104.5754081	0.00	
16330.00†	90.000	359.306	6897.00	10053.26	9726.29	2571.52	40.5315905	-104.5754087	0.00	
16430.00†	90.000	359.306	6897.00	10150.57	9826.28	2570.31	40.5318649	-104.5754093	0.00	
16530.00†	90.000	359.306	6897.00	10247.87	9926.27	2569.10	40.5321394	-104.5754099	0.00	
16630.00†	90.000	359.306	6897.00	10345.18	10026.27	2567.89	40.5324139	-104.5754105	0.00	
16730.00†	90.000	359.306	6897.00	10442.48	10126.26	2566.68	40.5326884	-104.5754111	0.00	
16830.00†	90.000	359.306	6897.00	10539.79	10226.25	2565.47	40.5329629	-104.5754117	0.00	
16930.00†	90.000	359.306	6897.00	10637.09	10326.24	2564.26	40.5332374	-104.5754123	0.00	
17030.00†	90.000	359.306	6897.00	10734.40	10426.24	2563.05	40.5335118	-104.5754129	0.00	
17130.00†	90.000	359.306	6897.00	10831.70	10526.23	2561.84	40.5337863	-104.5754135	0.00	
17230.00†	90.000	359.306	6897.00	10929.01	10626.22	2560.62	40.5340608	-104.5754142	0.00	

REFERENCE WELLPATH IDENTIFICATION			
Operator	NOBLE ENERGY, INC	Well	BISHOP A05-755
Field	WELD COUNTY (NOBLE NAD 83 GRID)	API/Legal	
Facility	SEC.07-T06N-R64W	Wellbore	BISHOP A05-755 PWB
Slot	SLOT#28 BISHOP A05-755 (1012'FNL & 373'FEL,SEC.07)		

WELLPATH DATA (188 stations) † = interpolated, ‡ = extrapolated station										
MD [ft]	Inclination [°]	Azimuth [°]	TVD [ft]	Vert Sect [ft]	North [ft]	East [ft]	Latitude	Longitude	DLS [°/100ft]	Comments
17330.00†	90.000	359.306	6897.00	11026.31	10726.21	2559.41	40.5343353	-104.5754148	0.00	
17430.00†	90.000	359.306	6897.00	11123.62	10826.21	2558.20	40.5346098	-104.5754154	0.00	
17530.00†	90.000	359.306	6897.00	11220.92	10926.20	2556.99	40.5348842	-104.5754160	0.00	
17630.00†	90.000	359.306	6897.00	11318.23	11026.19	2555.78	40.5351587	-104.5754166	0.00	
17730.00†	90.000	359.306	6897.00	11415.53	11126.19	2554.57	40.5354332	-104.5754172	0.00	
17830.00†	90.000	359.306	6897.00	11512.84	11226.18	2553.36	40.5357077	-104.5754178	0.00	
17930.00†	90.000	359.306	6897.00	11610.14	11326.17	2552.15	40.5359822	-104.5754184	0.00	
17983.13	90.000	359.306	6897.00‡	11661.84	11379.29	2551.50	40.5361280	-104.5754187	0.00	BHL

HOLE & CASING SECTIONS - Ref Wellbore: BISHOP A05-755 PWB Ref Wellpath: BISHOP A05-755 (REV-C.0) PWP									
String/Diameter	Start MD [ft]	End MD [ft]	Interval [ft]	Start TVD [ft]	End TVD [ft]	Start N/S [ft]	Start E/W [ft]	End N/S [ft]	End E/W [ft]
9.625in Casing Surface	30.00	1950.00	1920.00	30.00	1890.66	0.00	0.00	89.47	344.26

REFERENCE WELLPATH IDENTIFICATION			
Operator	NOBLE ENERGY, INC	Well	BISHOP A05-755
Field	WELD COUNTY (NOBLE NAD 83 GRID)	API/Legal	
Facility	SEC.07-T06N-R64W	Wellbore	BISHOP A05-755 PWB
Slot	SLOT#28 BISHOP A05-755 (1012'FNL & 373'FEL,SEC.07)		

TARGETS									
Name	MD [ft]	TVD [ft]	North [ft]	East [ft]	Grid East [US ft]	Grid North [US ft]	Latitude	Longitude	Shape
OGDP 1 SEC.07-T06N-R64W	N/A	3.00	149.57	-51.60	3254380.72	1428262.61	40.5053800	-104.5852000	polygon
	2D Polygon: dimensions not calculated								
OGDP 1 SEC.08-T06N-R64W	N/A	3.00	149.57	-51.60	3254380.72	1428262.61	40.5053800	-104.5852000	polygon
	2D Polygon: dimensions not calculated								
OGDP1 SEC.05-T06N-R64W	N/A	21.00	168.01	-4303.96	3250128.51	1428281.04	40.5055500	-104.6004900	polygon
	2D Polygon: dimensions not calculated								
OGDP1 SEC.06-T06N-R64W	N/A	21.00	168.01	-4303.96	3250128.51	1428281.04	40.5055500	-104.6004900	polygon
	2D Polygon: dimensions not calculated								
OGDP1 SEC.31-T07N-R64W	N/A	21.00	168.01	-4303.96	3250128.51	1428281.04	40.5055500	-104.6004900	polygon
	2D Polygon: dimensions not calculated								
OGDP1 SEC.32-T07N-R64W	N/A	21.00	168.01	-4303.96	3250128.51	1428281.04	40.5055500	-104.6004900	polygon
	2D Polygon: dimensions not calculated								
3) BISHOP A05-755 BHL Rev-2 (200'FSL & 2215'FWL,SEC.32)	17983.13	6897.00	11379.29	2551.50	3256983.73	1439491.93	40.5361280	-104.5754187	point
2) BISHOP A05-755 IP Rev-2	12957.57	6897.00	6354.11	2612.40	3257044.62	1434466.93	40.5223337	-104.5753882	point
1) BISHOP A05-755 LP Rev-2 (200'FSL & 2335'FWL,SEC.05)	7880.48	6897.00	1277.74	2698.25	3257130.47	1429390.73	40.5083982	-104.5752698	point
BISHOP A05-755 BHL Rev-1 (200'FSL & 2215'FWL,SEC.32)	N/A	6915.00	11379.29	2551.50	3256983.73	1439491.93	40.5361280	-104.5754187	point
BISHOP A05-755 IP 1	N/A	6915.00	6354.11	2612.40	3257044.62	1434466.93	40.5223337	-104.5753882	point
BISHOP A05-755 LP Rev-1 (200'FSL & 2335'FWL,SEC.05)	N/A	6915.00	1277.74	2698.25	3257130.47	1429390.73	40.5083982	-104.5752698	point
DP 136 Hardlines (200'FNL/FSL & 300'FEL/FWL)	N/A	7004.00	149.77	-67.73	3254364.58	1428262.81	40.5053810	-104.5852580	polygon
	2D Polygon: dimensions not calculated								

REFERENCE WELLPATH IDENTIFICATION			
Operator	NOBLE ENERGY, INC	Well	BISHOP A05-755
Field	WELD COUNTY (NOBLE NAD 83 GRID)	API/Legal	
Facility	SEC.07-T06N-R64W	Wellbore	BISHOP A05-755 PWB
Slot	SLOT#28 BISHOP A05-755 (1012'FNL & 373'FEL,SEC.07)		

SURVEY PROGRAM - Ref Wellbore: BISHOP A05-755 PWB Ref Wellpath: BISHOP A05-755 (REV-C.0) PWP				
Start MD [ft]	End MD [ft]	Positional Uncertainty Model	Log Name/Comment	Wellbore
30.00	1950.00	OWSG MWD rev2 (MS+IFR1)		BISHOP A05-755 PWB
1950.00	18186.22	OWSG MWD rev2 (MS+IFR1)		BISHOP A05-755 PWB

REFERENCE WELLPATH IDENTIFICATION			
Operator	NOBLE ENERGY, INC	Well	BISHOP A05-755
Field	WELD COUNTY (NOBLE NAD 83 GRID)	API/Legal	
Facility	SEC.07-T06N-R64W	Wellbore	BISHOP A05-755 PWB
Slot	SLOT#28 BISHOP A05-755 (1012'FNL & 373'FEL,SEC.07)		

DESIGN COMMENTS				
MD [ft]	Inclination [°]	Azimuth [°]	TVD [ft]	Comment
30.00	0.000	75.432	30.00	SHL
500.00	0.000	75.432	500.00	End of Tangent
1800.21	26.004	75.432	1756.03	Build (XS)
6946.22	26.004	75.432	6381.07	KOP
7880.48	90.000	359.031	6897.00	LP/TPZ
12957.57	90.000	359.031	6897.00	IP 1
12971.32	90.000	359.306	6897.00	3D Arc
17983.13	90.000	359.306	6897.00	BHL

**REFERENCE WELLPATH IDENTIFICATION**

Operator	NOBLE ENERGY, INC	Well	BISHOP A05-755
Field	WELD COUNTY (NOBLE NAD 83 GRID)	API/Legal	
Facility	SEC.07-T06N-R64W	Wellbore	BISHOP A05-755 PWB
Slot	SLOT#28 BISHOP A05-755 (1012'FNL & 373'FEL,SEC.07)		

**REPORT SETUP INFORMATION**

Projection System	NAD83 / Lambert Colorado SP, Northern Zone (501), US feet	Software System	WellArchitect® 6.0
North Reference	Grid	User	Martsam01
Scale	0.999967	Report Generated	10/6/2023 at 5:44:43 PM
Convergence at slot	0.59° East	Database	WA_Denver

**WELLPATH LOCATION**

	Local coordinates		Grid coordinates		Geographic coordinates	
	North[ft]	East[ft]	Easting[US ft]	Northing[US ft]	Latitude	Longitude
Slot Location	-149.57	51.60	3254432.32	1428113.04	40°30'17.8848"N	104°35'6.0720"W
Facility Reference Pt			3254380.72	1428262.61	40°30'19.3680"N	104°35'6.7200"W
Field Reference Pt			3000000.00	4454105.15	48°46'34.3150"N	105°30'0.0000"W

**WELLPATH DATUM**

Calculation method	Minimum Curvature	RIG (4745'GL+30'KB@4775'RKB) (RKB) to Facility Vertical Datum	4775.00ft
Horizontal Reference Pt	Slot	RIG (4745'GL+30'KB@4775'RKB) (RKB) to Mean Sea Level	4775.00ft
Vertical Reference Pt	RIG (4745'GL+30'KB@4775'RKB) (RKB)	RIG (4745'GL+30'KB@4775'RKB) (RKB) to Ground Level at Slot (SLOT#28 BISHOP A05-755 (1012'FNL & 373'FEL,SEC.07))	4775.00ft
MD Reference Pt	RIG (4745'GL+30'KB@4775'RKB) (RKB)		
Field Vertical Reference	Mean Sea Level		

**POSITIONAL UNCERTAINTY CALCULATION SETTINGS**

Ellipse Confidence Limit	3.50 Std Dev	Ellipse Start MD	30.00ft	Surface Position Uncertainty	included
Declination	7.38° East of TN	Dip Angle	66.68°	Mag Field Strength	51663 nT
Slot Surface Uncertainty @1SD		Horizontal	0.100ft	Vertical	1.000ft
Facility Surface Uncertainty @1SD		Horizontal	8.200ft	Vertical	3.000ft

Positional Uncertainty values in the WELLPATH DATA table are the projection of the ellipsoid of uncertainty onto the vertical and horizontal planes

**REFERENCE WELLPATH IDENTIFICATION**

Operator	NOBLE ENERGY, INC	Well	BISHOP A05-755
Field	WELD COUNTY (NOBLE NAD 83 GRID)	API/Legal	
Facility	SEC.07-T06N-R64W	Wellbore	BISHOP A05-755 PWB
Slot	SLOT#28 BISHOP A05-755 (1012'FNL & 373'FEL,SEC.07)		

**PROXIMITY-SCAN RULE**

Rule Name	SPE WPTS Stop Drilling HSE Risk (2017)	Rule Based On	Ratio
Plane of Rule	Closest Approach	Threshold Value	1.00
Include Casing & Hole Size	yes	Apply Cone of Safety	no

**HOLE & CASING SECTIONS - Ref Wellbore: BISHOP A05-755 PWB    Ref Wellpath: BISHOP A05-755 (REV-C.0) PWP**

String/Diameter	Start MD [ft]	End MD [ft]	Interval [ft]	Start TVD [ft]	End TVD [ft]	Start N/S [ft]	Start E/W [ft]	End N/S [ft]	End E/W [ft]
9.625in Casing Surface	30.00	1950.00	1920.00	30.00	1890.66	0.00	0.00	89.47	344.26

**SURVEY PROGRAM - Ref Wellbore: BISHOP A05-755 PWB    Ref Wellpath: BISHOP A05-755 (REV-C.0) PWP**

Start MD [ft]	End MD [ft]	Positional Uncertainty Model	Log Name/Comment	Wellbore
30.00	1950.00	OWSG MWD rev2 (MS+IFR1)		BISHOP A05-755 PWB
1950.00	18186.22	OWSG MWD rev2 (MS+IFR1)		BISHOP A05-755 PWB

**REFERENCE WELLPATH IDENTIFICATION**

Operator	NOBLE ENERGY, INC	Well	BISHOP A05-755
Field	WELD COUNTY (NOBLE NAD 83 GRID)	API/Legal	
Facility	SEC.07-T06N-R64W	Wellbore	BISHOP A05-755 PWB
Slot	SLOT#28 BISHOP A05-755 (1012'FNL & 373'FEL,SEC.07)		

**CALCULATION RANGE & CUTOFF**

From: 30.00ft MD	To: 17983.13ft MD	C-C Cutoff: (none)
------------------	-------------------	--------------------

**OFFSET WELL CLEARANCE SUMMARY** (91 Offset Wellpaths selected) Ratios are calculated in Closest Approach plane

Offset Facility	Offset Slot	Offset Well	Offset Wellbore	Offset Wellpath	Wellbore Status	C-C Clearance Distance			Rule Separation Ratio			
						Ref MD [ft]	Min C-C Clear Dist [ft]	Diverging from MD [ft]	Ref MD of Min Ratio [ft]	Min Ratio	Min Ratio Dvrg from [ft]	Rule Status
SEC.08-T06N-R64W	SLOT#03 FRANCIS #21-8 (05-123-27380)	FRANCIS #21-8 (05-123-27380)	FRANCIS #21-8 AWB	FRANCIS #21-8 AWP	Drilling	6284.92	4.45	6284.92	6284.91	0.01	6284.91	FAIL
SEC.32-T07N-R64W	SLOT#08 LAW #1 (05-123-12001)	LAW #1 (05-123-12001)	LAW #1 AWB	LAW #1 AWP	Drilling	14907.34	321.62	14907.34	14907.33	0.04	14907.33	FAIL
SEC.05-T06N-R64W	SLOT#04 GRADY DYER #23-5 (05-123-21959)	GRADY DYER #23-5 (05-123-21959)	GRADY DYER #23-5 AWB	GRADY DYER #23-5 AWP	Drilling	9490.93	479.01	9490.93	9490.93	0.06	9490.93	FAIL
SEC.32-T07N-R64W	SLOT#09 LEY #1-32 (05-123-12561)	LEY #1-32 (05-123-12561)	LEY #1-32 AWB	LEY #1-32 AWP	Drilling	17518.10	1609.73	17518.10	17518.10	0.19	17518.10	FAIL
SEC.05-T06N-R64W	SLOT#17 GRADY DYER #14-5 (05-123-21960)	GRADY DYER #14-5 (05-123-21960)	GRADY DYER #14-5 AWB	GRADY DYER #14-5 AWP	Drilling	4002.76	1441.50	8344.89	8344.89	0.22	8344.89	FAIL
SEC.08-T06N-R64W	SLOT#11 FRANCIS #22-8 (05-123-22515)	FRANCIS #22-8 (05-123-22515)	FRANCIS #22-8 AWB	FRANCIS #22-8 AWP	Drilling	5389.78	1619.40	5389.78	6992.02	0.22	6992.02	FAIL
SEC.32-T07N-R64W	SLOT#07 WESTERMAN #32-11 (05-123-26380)	WESTERMAN #32-11 (05-123-26380)	WESTERMAN #32-11 AWB	WESTERMAN #32-11 AWP	Drilling	17692.61	2092.23	17692.61	17692.84	0.25	17692.84	FAIL
SEC.08-T06N-R64W	SLOT#15 GRADY #1 (05-123-14810)	GRADY #1 (05-123-14810)	GRADY #1 AWB	GRADY #1 AWP	Drilling	2663.87	1174.09	2663.87	5202.96	0.27	5202.96	FAIL
SEC.05-T06N-R64W	SLOT#03 OWL CREEK #7 (05-123-11929)	OWL CREEK #7 (05-123-11929)	OWL CREEK #7 AWB	OWL CREEK #7 AWP	Drilling	9724.15	2339.25	9724.15	9724.22	0.27	9724.22	FAIL
SEC.05-T06N-R64W	SLOT#12 OWL CREEK #7-5 (05-123-27175)	OWL CREEK #7-5 (05-123-27175)	OWL CREEK #7-5 AWB	OWL CREEK #7-5 AWP	Drilling	8346.80	2369.38	8346.80	8346.84	0.28	8346.84	FAIL
SEC.32-T07N-R64W	SLOT#11 SCOTT #32-14 (05-123-26379)	SCOTT #32-14 (05-123-26379)	SCOTT #32-14 AWB	SCOTT #32-14 AWP	Drilling	16387.70	2487.65	16387.70	16387.98	0.29	16387.98	FAIL
SEC.08-T06N-R64W	SLOT#08 UHRICH #33-8 (05-123-20467)	UHRICH #33-8 (05-123-20467)	UHRICH #33-8 AWB	UHRICH #33-8 AWP	Drilling	6987.01	3306.37	6987.01	7239.54	0.41	7239.54	FAIL
SEC.07-T06N-R64W	SLOT#37 DYER #42-7 (05-123-13959)	DYER #42-7 (05-123-13959)	DYER #42-7 AWB	DYER #42-7 AWP (05-123-13959)	Drilling	30.00	1133.62	500.00	7026.81	0.44	7026.81	FAIL
SEC.08-T06N-R64W	SLOT#04 UHRICH #43-8 (05-123-21656)	UHRICH #43-8 (05-123-21656)	UHRICH #43-8 AWB	UHRICH #43-8 AWP	Drilling	7130.00	4064.55	7130.00	7388.14	0.49	7388.14	FAIL
SEC.05-T06N-R64W	SLOT#02 ROUSE USX A #05-03 (05-123-30349)	ROUSE USX A #05-03 (05-123-30349)	ROUSE USX A #05-03 AWB	ROUSE USX A #05-03 AWP	Drilling	12129.91	167.14	12129.91	12127.51	0.52	12127.51	FAIL
SEC.07-T06N-R64W	SLOT#41 Ehrlich #32-7 (05-123-20196)	Ehrlich #32-7 (05-123-20196)	Ehrlich #32-7 AWB	Ehrlich #32-7 AWP	Drilling	30.00	1824.57	500.00	7186.18	0.55	7186.18	FAIL
SEC.08-T06N-R64W	SLOT#16 UHRICH #34-8 (05-123-14446)	UHRICH #34-8 (05-123-14446)	UHRICH #34-8 AWB	UHRICH #34-8 AWP	Drilling	6946.22	4595.65	6946.22	7292.64	0.57	7292.64	FAIL
SEC.07-T06N-R64W	SLOT#35 CARLSON #33-7 (05-123-19548)	CARLSON #33-7 (05-123-19548)	CARLSON #33-7 AWB	CARLSON #33-7 AWP	Drilling	130.00	2639.15	500.00	7211.69	0.62	7211.69	FAIL
SEC.07-T06N-R64W	SLOT#30 KREPS #21-7 (05-123-20207)	KREPS #21-7 (05-123-20207)	KREPS #21-7 AWB	KREPS #21-7 AWP	Drilling	30.00	2992.24	500.00	7684.60	0.68	7684.60	FAIL
SEC.07-T06N-R64W	SLOT#38 EHRLICH #22-7 (05-123-14184)	EHRLICH #22-7 (05-123-14184)	EHRLICH #22-7 AWB	EHRLICH #22-7 AWP	Drilling	130.00	3532.70	500.00	7439.26	0.77	7439.26	FAIL
SEC.07-T06N-R64W	SLOT#32 EHRLICH #3 (05-123-12737)	EHRLICH #3 (05-123-12737)	EHRLICH #3 AWB	EHRLICH #3 AWP	Drilling	130.00	3660.55	500.00	7371.95	0.77	7371.95	FAIL
SEC.07-T06N-R64W	SLOT#34 KREPS #11-7 (05-123-14166)	KREPS #11-7 (05-123-14166)	KREPS #11-7 AWB	KREPS #11-7 AWP	Drilling	30.00	4120.76	500.00	7745.62	0.82	7745.62	FAIL
SEC.07-T06N-R64W	SLOT#42 EHRLICH #4 (05-123-12738)	EHRLICH #4 (05-123-12738)	EHRLICH #4 AWB	EHRLICH #4 AWP	Drilling	30.00	4143.96	500.00	7570.57	0.84	7570.57	FAIL
SEC.05-T06N-R64W	SLOT#13 DYER USX A #05-14 (05-123-33405)	DYER USX A #05-14 (05-123-33405)	DYER USX A #05-14 AWB	DYER USX A #05-14 AWP	Drilling	8338.71	333.56	8338.71	8337.37	1.12	8337.37	PASS
SEC.32-T07N-R64W	SLOT#06 MCCRORY #1 (05-123-07160)	MCCRORY #1 (05-123-07160)	MCCRORY #1 AWB	MCCRORY #1 AWP	Drilling	16801.25	3612.52	16801.25	15065.88	1.13	17983.13	PASS

## REFERENCE WELLPATH IDENTIFICATION

Operator	NOBLE ENERGY, INC	Well	BISHOP A05-755
Field	WELD COUNTY (NOBLE NAD 83 GRID)	API/Legal	
Facility	SEC.07-T06N-R64W	Wellbore	BISHOP A05-755 PWB
Slot	SLOT#28 BISHOP A05-755 (1012'FNL & 373'FEL,SEC.07)		

## CALCULATION RANGE & CUTOFF

From: 30.00ft MD	To: 17983.13ft MD	C-C Cutoff: (none)
------------------	-------------------	--------------------

## OFFSET WELL CLEARANCE SUMMARY (91 Offset Wellpaths selected) Ratios are calculated in Closest Approach plane

Offset Facility	Offset Slot	Offset Well	Offset Wellbore	Offset Wellpath	Wellbore Status	C-C Clearance Distance			Rule Separation Ratio			
						Ref MD [ft]	Min C-C Clear Dist [ft]	Diverging from MD [ft]	Ref MD of Min Ratio [ft]	Min Ratio	Min Ratio Dvrg from [ft]	Rule Status
SEC.05-T06N-R64W	SLOT#11 ROUSE USX A #05-06 (05-123-29405)	ROUSE USX A #05-06 (05-123-29405)	ROUSE USX A #05-06 AWB	ROUSE USX A #05-06 AWP	Drilling	10778.21	141.40	10778.21	10764.62	1.47	10764.62	PASS
SEC.07-T06N-R64W	SLOT#27 BISHOP A05-764 (1011'FNL & 396'FEL,SEC.07)	BISHOP A05-764	BISHOP A05-764 PWB	BISHOP A05-764 (REV-C.0) PWP	Planned	30.00	22.53	12971.32	1530.63	1.72	17983.13	PASS
SEC.07-T06N-R64W	SLOT#01 BISHOP A08-685 (860'FNL & 439'FEL,SEC.07)	BISHOP A08-685	BISHOP A08-685 PWB	BISHOP A08-685 (REV-C.0) PWP	Planned	30.00	164.38	7419.21	7419.21	2.17	7419.21	PASS
SEC.05-T06N-R64W	SLOT#14 ROUSE USX A #05-07 (05-123-29422)	ROUSE USX A #05-07 (05-123-29422)	ROUSE USX A #05-07 AWB	ROUSE USX A #05-07 AWP	Drilling	10794.62	1020.36	10794.62	10820.69	3.59	10820.69	PASS
SEC.05-T06N-R64W	SLOT#07 ROUSE-USX A #5-19 (05-123-24697)	ROUSE-USX A #5-19 (05-123-24697)	ROUSE-USX A #5-19 AWB	ROUSE-USX A #5-19 AWP	Drilling	11640.54	1048.92	11640.54	11634.16	3.67	11634.16	PASS
SEC.05-T06N-R64W	SLOT#05 ROUSE USX A #05-02 (05-123-29636)	ROUSE USX A #05-02 (05-123-29636)	ROUSE USX A #05-02 AWB	ROUSE USX A #05-02 AWP	Drilling	12138.43	1107.97	12138.43	12175.65	3.83	12175.65	PASS
SEC.07-T06N-R64W	SLOT#26 BISHOP A05-773 (1011'FNL & 418'FEL,SEC.07)	BISHOP A05-773	BISHOP A05-773 PWB	BISHOP A05-773 (REV-C.0) PWP	Planned	30.00	45.05	12971.32	1284.46	4.05	17983.13	PASS
SEC.08-T06N-R64W	SLOT#06 ERICKSON A #8-2 (05-123-23853)	ERICKSON A #8-2 (05-123-23853)	ERICKSON A #8-2 AWB	ERICKSON A #8-2 AWP	Drilling	7399.44	1096.68	7399.44	7461.19	4.32	7461.19	PASS
SEC.32-T07N-R64W	SLOT#17 CECIL #32-34 (05-123-23809)	CECIL #32-34 (05-123-23809)	CECIL #32-34 AWB	CECIL #32-34 AWP	Drilling	13561.68	530.32	13561.68	13525.23	4.32	13525.23	PASS
SEC.32-T07N-R64W	SLOT#18 SCOTT #32-13 (05-123-25475)	SCOTT #32-13 (05-123-25475)	SCOTT #32-13 AWB	SCOTT #32-13 AWP	Drilling	16049.91	800.98	16049.91	16141.50	5.22	16141.50	PASS
SEC.32-T07N-R64W	SLOT#13 NC Farms #10-32 (05-123-34785)	NC Farms #10-32 (05-123-34785)	NC Farms #10-32 AWB	NC Farms #10-32 AWP	Drilling	15042.55	919.90	15042.55	15095.55	6.03	15095.55	PASS
SEC.08-T06N-R64W	SLOT#07 FRANCIS #11-8 (05-123-22517)	FRANCIS #11-8 (05-123-22517)	FRANCIS #11-8 AWB	FRANCIS #11-8 AWP	Drilling	3309.66	314.76	3309.66	3356.62	6.27	12030.00	PASS
SEC.05-T06N-R64W	SLOT#15 ROUSE USX A #05-05 (05-123-29403)	ROUSE USX A #05-05 (05-123-29403)	ROUSE USX A #05-05 AWB	ROUSE USX A #05-05 AWP	Drilling	10809.37	1809.24	10809.37	10813.95	6.61	10813.95	PASS
SEC.07-T06N-R64W	SLOT#25 BISHOP A05-783 (1010'FNL & 441'FEL,SEC.07)	BISHOP A05-783	BISHOP A05-783 PWB	BISHOP A05-783 (REV-C.0) PWP	Planned	30.00	67.58	17983.13	1057.26	7.04	17983.13	PASS
SEC.32-T07N-R64W	SLOT#14 NC Farms #15-32 (05-123-34789)	NC Farms #15-32 (05-123-34789)	NC Farms #15-32 AWB	NC Farms #15-32 AWP	Drilling	13616.15	1013.25	13616.15	13755.88	8.06	13755.88	PASS
SEC.08-T06N-R64W	SLOT#14 ERICKSON A #8-7 (05-123-23750)	ERICKSON A #8-7 (05-123-23750)	ERICKSON A #8-7 AWB	ERICKSON A #8-7 AWP	Drilling	7100.11	2041.83	7100.11	7274.10	8.43	7274.10	PASS
SEC.08-T06N-R64W	SLOT#01 ERICKSON A #8-17 (05-123-23751)	ERICKSON A #8-17 (05-123-23751)	ERICKSON A #8-17 AWB	ERICKSON A #8-17 AWP	Drilling	7312.56	2210.92	7312.56	7451.18	8.70	7451.18	PASS
SEC.05-T06N-R64W	SLOT#10 ROUSE USX A #05-08 (05-123-29423)	ROUSE USX A #05-08 (05-123-29423)	ROUSE USX A #05-08 AWB	ROUSE USX A #05-08 AWP	Drilling	10801.44	2343.63	10801.44	10906.31	8.79	10906.31	PASS
SEC.07-T06N-R64W	SLOT#02 BISHOP A08-675 (861'FNL & 417'FEL,SEC.07)	BISHOP A08-675	BISHOP A08-675 PWB	BISHOP A08-675 (REV-C.0) PWP	Planned	30.00	156.67	7130.00	7257.62	9.17	7257.62	PASS
SEC.05-T06N-R64W	SLOT#01 ROUSE USX A #05-01 (05-123-29487)	ROUSE USX A #05-01 (05-123-29487)	ROUSE USX A #05-01 AWB	ROUSE USX A #05-01 AWP	Drilling	12479.60	2503.65	12479.60	12648.54	9.67	12648.54	PASS
SEC.07-T06N-R64W	SLOT#04 BISHOP A08-655 (862'FNL & 372'FEL,SEC.07)	BISHOP A08-655	BISHOP A08-655 PWB	BISHOP A08-655 (REV-C.0) PWP	Planned	1192.58	119.64	7030.00	1271.15	9.68	7230.00	PASS
SEC.07-T06N-R64W	SLOT#24 BISHOP A06-712 (1010'FNL & 463'FEL,SEC.07)	BISHOP A06-712	BISHOP A06-712 PWB	BISHOP A06-712 (REV-C.0) PWP	Planned	30.00	90.10	17983.13	17983.13	10.44	17983.13	PASS
SEC.05-T06N-R64W	SLOT#16 ERICKSON #5-43 (05-123-18513)	ERICKSON #5-43 (05-123-18513)	ERICKSON #5-43 AWB	ERICKSON #5-43 AWP	Drilling	8293.60	810.69	8293.60	8404.44	10.55	8404.44	PASS
SEC.32-T07N-R64W	SLOT#10 CECIL #32-32 (05-123-23810)	CECIL #32-32 (05-123-23810)	CECIL #32-32 AWB	CECIL #32-32 AWP	Drilling	14790.99	1433.58	14790.99	14783.99	10.58	14783.99	PASS
SEC.07-T06N-R64W	SLOT#03 BISHOP A08-665 (861'FNL & 394'FEL,SEC.07)	BISHOP A08-665	BISHOP A08-665 PWB	BISHOP A08-665 (REV-C.0) PWP	Planned	1129.86	140.61	7030.00	1245.48	11.75	7230.00	PASS

### REFERENCE WELLPATH IDENTIFICATION

Operator	NOBLE ENERGY, INC	Well	BISHOP A05-755
Field	WELD COUNTY (NOBLE NAD 83 GRID)	API/Legal	
Facility	SEC.07-T06N-R64W	Wellbore	BISHOP A05-755 PWB
Slot	SLOT#28 BISHOP A05-755 (1012'FNL & 373'FEL,SEC.07)		

### CALCULATION RANGE & CUTOFF

From: 30.00ft MD	To: 17983.13ft MD	C-C Cutoff: (none)
------------------	-------------------	--------------------

### OFFSET WELL CLEARANCE SUMMARY (91 Offset Wellpaths selected) Ratios are calculated in Closest Approach plane

Offset Facility	Offset Slot	Offset Well	Offset Wellbore	Offset Wellpath	Wellbore Status	C-C Clearance Distance			Rule Separation Ratio			
						Ref MD [ft]	Min C-C Clear Dist [ft]	Diverging from MD [ft]	Ref MD of Min Ratio [ft]	Min Ratio	Min Ratio Dvrg from [ft]	Rule Status
SEC.32-T07N-R64W	SLOT#16 NC Farms #20-32 (05-123-34793)	NC Farms #20-32 (05-123-34793)	NC Farms #20-32 AWB	NC Farms #20-32 AWP	Drilling	14262.54	1693.92	14262.54	14522.60	12.35	14522.60	PASS
SEC.07-T06N-R64W	SLOT#23 BISHOP A06-722 (1009'FNL & 486'FEL,SEC.07)	BISHOP A06-722	BISHOP A06-722 PWB	BISHOP A06-722 (REV-C.0) PWP	Planned	30.00	112.63	17983.13	17983.13	13.05	17983.13	PASS
SEC.32-T07N-R64W	SLOT#15 NC Farms #9-32 (05-123-34790)	NC Farms #9-32 (05-123-34790)	NC Farms #9-32 AWB	NC Farms #9-32 AWP	Drilling	14905.30	2320.35	14905.30	15324.25	15.43	15324.25	PASS
SEC.07-T06N-R64W	SLOT#22 BISHOP A06-731 (1009'FNL & 508'FEL,SEC.07)	BISHOP A06-731	BISHOP A06-731 PWB	BISHOP A06-731 (REV-B.0) PWP	Planned	30.00	135.16	17983.13	17983.13	15.56	17983.13	PASS
SEC.05-T06N-R64W	SLOT#06 ROUSE USX A #05-04 (05-123-29404)	ROUSE USX A #05-04 (05-123-29404)	ROUSE USX A #05-04 AWB	ROUSE USX A #05-04 AWP	Drilling	12154.84	1690.75	12154.84	12172.70	16.06	12172.70	PASS
SEC.05-T06N-R64W	SLOT#09 ROUSE-USX A #5-17 (05-123-24696)	ROUSE-USX A #5-17 (05-123-24696)	ROUSE-USX A #5-17 AWB	ROUSE-USX A #5-17 AWP	Drilling	11604.63	1883.68	11604.63	12044.72	18.04	12044.72	PASS
SEC.07-T06N-R64W	SLOT#21 BISHOP A06-740 (1008'FNL & 531'FEL,SEC.07)	BISHOP A06-740	BISHOP A06-740 PWB	BISHOP A06-740 (REV-C.0) PWP	Planned	30.00	157.68	17983.13	17983.13	18.20	17983.13	PASS
SEC.32-T07N-R64W	SLOT#12 NC Farms #16-32 (05-123-34782)	NC Farms #16-32 (05-123-34782)	NC Farms #16-32 AWB	NC Farms #16-32 AWP	Drilling	13639.49	2341.86	13639.49	14163.25	18.27	14163.25	PASS
SEC.07-T06N-R64W	SLOT#16 BISHOP A18-715 (860'FNL & 462'FEL,SEC.07)	BISHOP A18-715	BISHOP A18-715 PWB	BISHOP A18-715 (REV-C.0) PWP	Planned	30.00	174.98	500.00	952.65	20.26	6930.00	PASS
SEC.05-T06N-R64W	SLOT#08 DYER #13-5 (05-123-21187)	DYER #13-5 (05-123-21187)	DYER #13-5 AWB	DYER #13-5 AWP	Drilling	9820.53	1754.38	9820.53	9846.76	20.72	9846.76	PASS
SEC.07-T06N-R64W	SLOT#20 BRASKALAND A06-756 (642'FNL & 320'FWL,SEC.07)	BRASKALAND A06-756	BRASKALAND A06-756 PWB	BRASKALAND A06-756 (REV-C.0) PWP	Planned	30.00	4313.79	17983.13	17983.13	20.93	17983.13	PASS
SEC.07-T06N-R64W	SLOT#15 BISHOP A18-724 (859'FNL & 484'FEL,SEC.07)	BISHOP A18-724	BISHOP A18-724 PWB	BISHOP A18-724 (REV-C.0) PWP	Planned	30.00	187.54	7930.00	830.00	23.12	7930.00	PASS
SEC.07-T06N-R64W	SLOT#19 BRASKALAND A06-765 (665'FNL & 319'FWL,SEC.07)	BRASKALAND A06-765	BRASKALAND A06-765 PWB	BRASKALAND A06-765 (REV-C.0) PWP	Planned	30.00	4312.42	17983.13	17983.13	23.52	17983.13	PASS
SEC.07-T06N-R64W	SLOT#14 BISHOP A18-733 (859'FNL & 507'FEL,SEC.07)	BISHOP A18-733	BISHOP A18-733 PWB	BISHOP A18-733 (REV-C.0) PWP	Planned	30.00	201.68	8130.00	830.00	24.97	8630.00	PASS
SEC.07-T06N-R64W	SLOT#18 BRASKALAND A06-773 (687'FNL & 319'FWL,SEC.07)	BRASKALAND A06-773	BRASKALAND A06-773 PWB	BRASKALAND A06-773 (REV-C.0) PWP	Planned	30.00	4311.17	17983.13	17983.13	26.22	17983.13	PASS
SEC.07-T06N-R64W	SLOT#13 BISHOP A18-742 (858'FNL & 529'FEL,SEC.07)	BISHOP A18-742	BISHOP A18-742 PWB	BISHOP A18-742 (REV-C.0) PWP	Planned	30.00	217.50	8030.00	830.00	26.88	9530.00	PASS
SEC.07-T06N-R64W	SLOT#17 BRASKALAND A06-782 (710'FNL & 319'FWL,SEC.07)	BRASKALAND A06-782	BRASKALAND A06-782 PWB	BRASKALAND A06-782 (REV-C.0) PWP	Planned	30.00	4310.06	17983.13	17983.13	28.87	17983.13	PASS
SEC.07-T06N-R64W	SLOT#05 CARLSON A08-645 (1424'FSL & 919'FEL,SEC.07)	CARLSON A08-645	CARLSON A08-645 PWB	CARLSON A08-645 (REV-C.0) PWP	Planned	6976.84	2589.32	6976.84	7128.29	28.97	7128.29	PASS
SEC.08-T06N-R64W	SLOT#02 ERICKSON A #8-1 (05-123-23826)	ERICKSON A #8-1 (05-123-23826)	ERICKSON A #8-1 AWB	ERICKSON A #8-1 AWP	Drilling	7530.00	2303.89	7530.00	7905.65	30.05	7905.65	PASS
SEC.07-T06N-R64W	SLOT#06 CARLSON A08-635 (1423'FSL & 882'FEL,SEC.07)	CARLSON A08-635	CARLSON A08-635 PWB	CARLSON A08-635 (REV-C.0) PWP	Planned	30.00	2883.09	6946.22	7185.70	36.73	7185.70	PASS
SEC.07-T06N-R64W	SLOT#29 DYER #41-7 (05-123-20669)	DYER #41-7 (05-123-20669)	DYER #41-7 AWB	DYER #41-7 AWP	Drilling	30.00	443.25	30.00	1706.86	38.64	7030.00	PASS
SEC.08-T06N-R64W	SLOT#10 ERICKSON A #8-8 (05-123-23752)	ERICKSON A #8-8 (05-123-23752)	ERICKSON A #8-8 AWB	ERICKSON A #8-8 AWP	Drilling	7261.52	3105.88	7261.52	7530.00	41.01	7530.00	PASS
SEC.08-T06N-R64W	SLOT#05 FRANCEN #23-8 (05-123-21958)	FRANCEN #23-8 (05-123-21958)	FRANCEN #23-8 AWB	FRANCEN #23-8 AWP	Drilling	4886.84	2923.83	4886.84	7066.05	41.10	7066.05	PASS
SEC.07-T06N-R64W	SLOT#07 CARLSON A08-625 (1423'FSL & 844'FEL,SEC.07)	CARLSON A08-625	CARLSON A08-625 PWB	CARLSON A08-625 (REV-C.0) PWP	Planned	30.00	2876.89	6946.22	7230.00	44.32	7230.00	PASS
SEC.08-T06N-R64W	SLOT#09 MILE HIGH SHEEP #8-32 (05-123-23451)	MILE HIGH SHEEP #8-32 (05-123-23451)	MILE HIGH SHEEP #8-32 AWB	MILE HIGH SHEEP #8-32 AWP	Drilling	1701.17	2589.39	1701.17	6960.63	47.96	6960.63	PASS

### REFERENCE WELLPATH IDENTIFICATION

Operator	NOBLE ENERGY, INC	Well	BISHOP A05-755
Field	WELD COUNTY (NOBLE NAD 83 GRID)	API/Legal	
Facility	SEC.07-T06N-R64W	Wellbore	BISHOP A05-755 PWB
Slot	SLOT#28 BISHOP A05-755 (1012'FNL & 373'FEL,SEC.07)		

### CALCULATION RANGE & CUTOFF

From: 30.00ft MD	To: 17983.13ft MD	C-C Cutoff: (none)
------------------	-------------------	--------------------

### OFFSET WELL CLEARANCE SUMMARY (91 Offset Wellpaths selected) Ratios are calculated in Closest Approach plane

Offset Facility	Offset Slot	Offset Well	Offset Wellbore	Offset Wellpath	Wellbore Status	C-C Clearance Distance			Rule Separation Ratio			
						Ref MD [ft]	Min C-C Clear Dist [ft]	Diverging from MD [ft]	Ref MD of Min Ratio [ft]	Min Ratio	Min Ratio Dvrg from [ft]	Rule Status
SEC.08-T06N-R64W	SLOT#18 MILE-HI SHEEP #8-35 (05-123-24252)	MILE-HI SHEEP #8-35 (05-123-24252)	MILE-HI SHEEP #8-35 AWB	MILE-HI SHEEP #8-35 AWP	Drilling	2697.77	3170.12	2697.77	7039.03	50.27	7039.03	PASS
SEC.07-T06N-R64W	SLOT#08 CARLSON A08-615 (1422'FSL & 807'FEL,SEC.07)	CARLSON A08-615	CARLSON A08-615 PWB	CARLSON A08-615 (REV-C.0) PWP	Planned	30.00	2870.71	6930.00	7268.93	51.53	7268.93	PASS
SEC.08-T06N-R64W	SLOT#17 MILE HIGH SHEEP #8-33 (05-123-23128)	MILE HIGH SHEEP #8-33 (05-123-23128)	MILE HIGH SHEEP #8-33 AWB	MILE HIGH SHEEP #8-33 AWP	Drilling	1165.59	3529.11	1165.59	7053.23	58.25	7053.23	PASS
SEC.08-T06N-R64W	SLOT#13 FRANCCEN #24-8 (05-123-14232)	FRANCCEN #24-8 (05-123-14232)	FRANCCEN #24-8 AWB	FRANCCEN #24-8 AWP	Drilling	4601.09	4282.80	5030.00	7133.77	58.33	7133.77	PASS
SEC.07-T06N-R64W	SLOT#33 KREPS #1 (05-123-12736)	KREPS #1 (05-123-12736)	KREPS #1 AWB	KREPS #1 AWP	Drilling	510.95	1561.60	510.95	7905.33	65.87	7905.33	PASS
SEC.08-T06N-R64W	SLOT#12 UHRICH #44-8 (05-123-14418)	UHRICH #44-8 (05-123-14418)	UHRICH #44-8 AWB	UHRICH #44-8 AWP	Drilling	7030.00	5106.51	7030.00	7335.24	66.80	7335.24	PASS
SEC.07-T06N-R64W	SLOT#31 ROY CARLSON #43-7 (05-123-21867)	ROY CARLSON #43-7 (05-123-21867)	ROY CARLSON #43-7 AWB	ROY CARLSON #43-7 AWP	Drilling	30.00	2300.85	30.00	7130.00	69.30	7130.00	PASS
SEC.07-T06N-R64W	SLOT#12 BRASKALAND A18-755 (800'FNL & 319'FWL,SEC.07)	BRASKALAND A18-755	BRASKALAND A18-755 PWB	BRASKALAND A18-755 (REV-C.0) PWP	Planned	30.00	4308.77	5330.00	7905.41	77.71	8930.00	PASS
SEC.07-T06N-R64W	SLOT#39 CARLSON #44-7 (05-123-14171)	CARLSON #44-7 (05-123-14171)	CARLSON #44-7 AWB	CARLSON #44-7 AWP (05-123-14171)	Drilling	30.00	3519.28	30.00	7184.82	85.92	7184.82	PASS
SEC.07-T06N-R64W	SLOT#11 BRASKALAND A18-764 (777'FNL & 319'FWL,SEC.07)	BRASKALAND A18-764	BRASKALAND A18-764 PWB	BRASKALAND A18-764 (REV-C.0) PWP	Planned	30.00	4307.87	5130.00	7905.42	88.17	9930.00	PASS
SEC.07-T06N-R64W	SLOT#10 BRASKALAND A18-773 (755'FNL & 319'FWL,SEC.07)	BRASKALAND A18-773	BRASKALAND A18-773 PWB	BRASKALAND A18-773 (REV-C.0) PWP	Planned	30.00	4307.09	500.00	10923.74	98.06	10923.74	PASS
SEC.07-T06N-R64W	SLOT#43 CARLSON #34-7 (05-123-14251)	CARLSON #34-7 (05-123-14251)	CARLSON #34-7 AWB	CARLSON #34-7 AWP	Drilling	404.73	3953.57	404.73	7247.16	99.68	7247.16	PASS
SEC.07-T06N-R64W	SLOT#09 BRASKALAND A18-782 (732'FNL & 319'FWL,SEC.07)	BRASKALAND A18-782	BRASKALAND A18-782 PWB	BRASKALAND A18-782 (REV-C.0) PWP	Planned	30.00	4306.44	500.00	11751.45	104.20	11751.45	PASS
SEC.07-T06N-R64W	SLOT#40 EHRLICH #24-7 (05-123-20469)	EHRLICH #24-7 (05-123-20469)	EHRLICH #24-7 AWB	EHRLICH #24-7 AWP	Drilling	316.08	4637.24	316.08	7905.03	113.66	7905.03	PASS
SEC.07-T06N-R64W	SLOT#36 EHRLICH #1 (05-123-12382)	EHRLICH #1 (05-123-12382)	EHRLICH #1 AWB	EHRLICH #1 AWP	Drilling	72.00	4647.16	72.00	7905.17	118.63	7905.17	PASS
SEC.07-T06N-R64W	SLOT#44 EHRLICH #2 (05-123-12460)	EHRLICH #2 (05-123-12460)	EHRLICH #2 AWB	EHRLICH #2 AWP	Drilling	515.80	5466.86	515.80	7905.08	126.76	7905.08	PASS