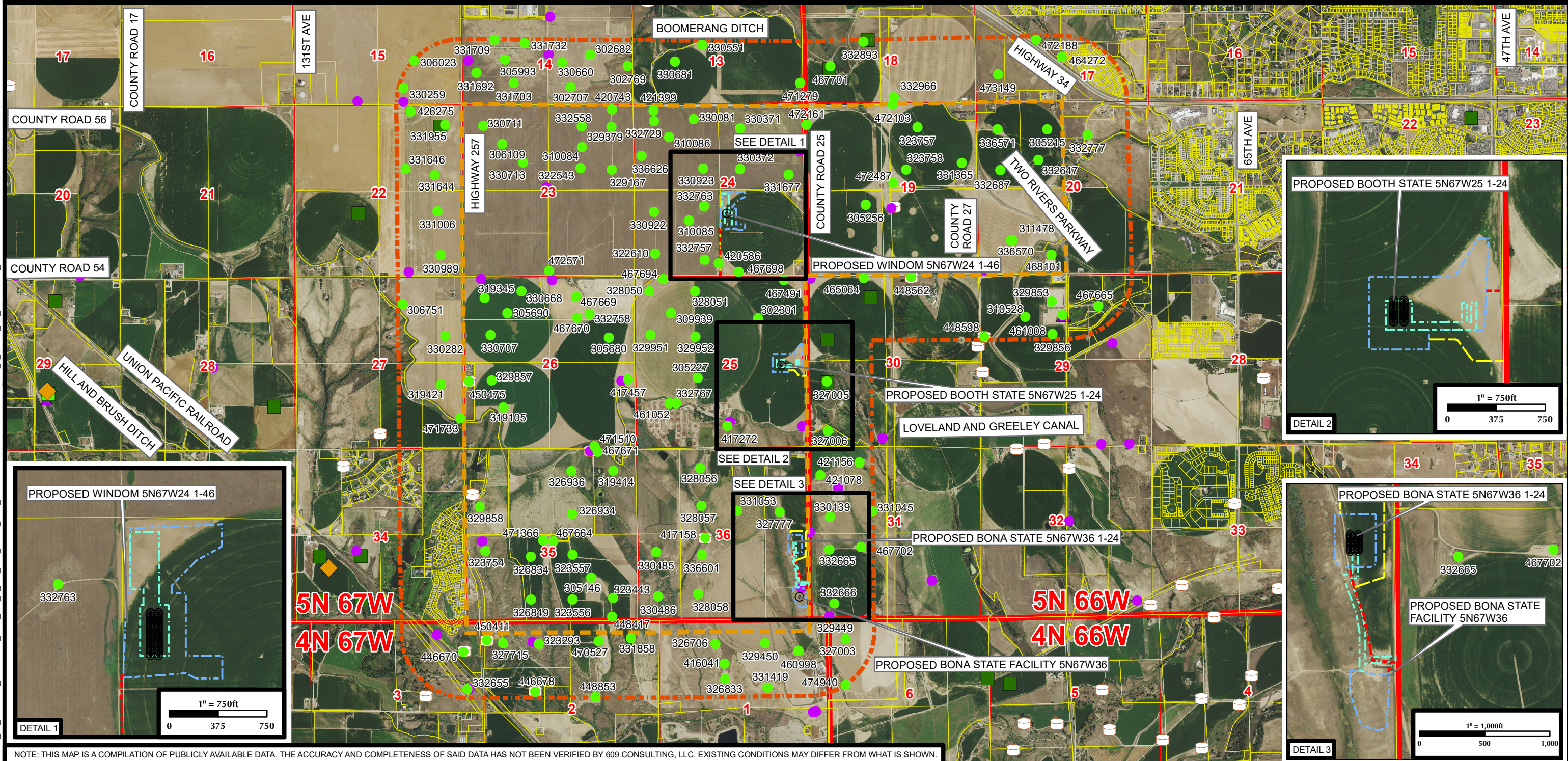


K:\SYNERGY RESOURCES\2018\2018_55_WINDOW_CHOPPER_DSU_207_&_208_T5N_R67W_SEC_24\GIS\FORM 2A MAPS\CAMERON_2_FORM_2A_FLOWLINE_MAP.mxd 3/14/2023 12:44:50 PM

RELATED LOCATION & FLOWLINE MAP CAMERON 2

SECTION 24, 25, & 36, TOWNSHIP 5 NORTH, RANGE 67 WEST, 6TH P.M., WELD COUNTY, COLORADO



NOTE: THIS MAP IS A COMPILATION OF PUBLICLY AVAILABLE DATA. THE ACCURACY AND COMPLETENESS OF SAID DATA HAS NOT BEEN VERIFIED BY 609 CONSULTING, LLC. EXISTING CONDITIONS MAY DIFFER FROM WHAT IS SHOWN.

Legend

- | | | | | |
|----------------------------|---|--|---|--------------|
| PROPOSED WELL | PROPOSED WORKING PAD SURFACE | WELD OIL AND GAS LOCATION ASSESSMENT (WOGLA) | APPROVED LOCATION PERMIT (FORM 2A) | TANK BATTERY |
| PROPOSED ACCESS ROAD | PROPOSED MINERAL BOUNDARY | PENDING WELL PERMIT (FORM 2) | ACTIVE LOCATION | CLOSED PIT |
| TEMPORARY ACCESS ROAD | 2000' BUFFER - PROPOSED MINERAL & PROPOSED ACCESS ROAD BOUNDARY | APPROVED WELL PERMIT (FORM 2) | VISIBLE LOCATION ON AERIAL NOT IN COGCC GIS | |
| PROPOSED FLOWLINE CORRIDOR | PARCEL BOUNDARY | PENDING LOCATION PERMIT (FORM 2A) | | |

PDC ENERGY
4000 Burlington Avenue
Evans, Colorado 80620

609 Consulting, LLC
LOVELAND OFFICE
6706 North Franklin Avenue
Loveland, Colorado 80538
Phone 970-776-4331
SHERIDAN OFFICE
1095 Saberton Avenue
Sheridan, Wyoming 82801
Phone 307-674-0609

Drawn by: AK
Revised:

Date: 14 Mar 2023
Date:

1" = 1,800ft
0 1,550 3,100
NAD83 CO-Nft

Sheet:
1 of 3

K:\SYNERGY RESOURCES\2018\2018_55_WINDOW_CHOPPER_DSU_207_&_208_T5N_R67W_SEC_24\GIS\FORM 2A MAPS\CAMERON_2_FORM_2A_FLOWLINE_MAP_TABLE_1.mxd 3/14/2023 10:45:40 AM


RELATED LOCATION & FLOWLINE MAP

CAMERON 2

SECTION 24, 25, & 36, TOWNSHIP 5 NORTH, RANGE 67 WEST, 6TH P.M., WELD COUNTY, COLORADO

LOCATION ID	LOCATION NAME	LOCATION NUMBER	OPERATOR NAME
302301	BOOTH-65N67W	25SWNE	PDC ENERGY INC
302682	ROACH N-65N67W	14NESE	NOBLE ENERGY INC
302707	ROACH N-65N67W	14SWSE	NOBLE ENERGY INC
302769	ROACH N-65N67W	14SESE	NOBLE ENERGY INC
305146	STROH N-65N67W	35W2SE	PDC ENERGY INC
305215	STUGART-65N66W	20NENW	PDC ENERGY INC
305227	BOOTH N-65N67W	25NESW	NOBLE ENERGY INC
305256	KORI J-65N66W	19NESW	NOBLE ENERGY INC
305680	BLEHM N-65N67W	26SENE	NOBLE ENERGY INC
305690	BLEHM N-65N67W	26NENW	NOBLE ENERGY INC
305993	GOLDBERG N-65N67W	14NESW	NOBLE ENERGY INC
306023	EDWARDS-65N67W	15NWSE	KERR MCGEE OIL & GAS ONSHORE LP
306109	KINZER-65N67W	23NWNW	NOBLE ENERGY INC
306751	CALLEN-USX N-65N67W	27NWNE	KERR MCGEE OIL & GAS ONSHORE LP
309939	BOOTH N-65N67W	25NWNW	PDC ENERGY INC
310084	PHILLIPS	23-15	PDC ENERGY INC
310085	PHILLIPS	24-35	PDC ENERGY INC
310086	PHILLIPS	24-25	NOBLE ENERGY INC
310528	KAMMERZELL J-65N66W	29NENW	NOBLE ENERGY INC
311478	LUNDVALL-65N66W	20SWSW	NOBLE ENERGY INC
319105	BLEHM-65N67W	26SWSW	PDC ENERGY INC
319345	BLEHM-65N67W	26NWNW	NOBLE ENERGY INC
319414	VETTER-65N67W	35NENE	PDC ENERGY INC
319421	SMITH-REEVES-65N67W	27NESE	PDC ENERGY INC
322543	PHILLIPS	23-1-21	PDC ENERGY INC
322610	PHILLIPS-65N67W	24SWSW	PDC ENERGY INC
323293	WAGNER-64N67W	2NENW	BLUE CHIP OIL INC
323443	STROB-65N67W	35SESE	NOBLE ENERGY INC
323556	STROH N-65N67W	35SWSE	PDC ENERGY INC
323557	STROH N-65N67W	35NWSE	PDC ENERGY INC
323754	SUSAN-65N67W	35NWSW	NOBLE ENERGY INC
323757	LUNDVALL UP-65N66W	19NWNE	PDC ENERGY INC
323758	LUNDVALL UP-65N66W	19SWNE	PDC ENERGY INC
326706	BERNHARDT-64N67W	1NENW	PDC ENERGY INC
326833	HULL-64N67W	1SENW	PDC ENERGY INC
326834	HSR-STROH-65N67W	35NESW	PDC ENERGY INC
326849	LINDSEY-65N67W	35SESW	PDC ENERGY INC
326934	STROH-65N67W	35SWNE	PDC ENERGY INC
326936	STROH-65N67W	35NWNE	PDC ENERGY INC
327003	BERNHARDT-PM-64N66W	6NWNW	PDC ENERGY INC
327005	RICKS-PM-65N66W	30NWSW	PDC ENERGY INC
327006	BERNHARDT-PM-65N66W	30SWSW	PDC ENERGY INC
327715	WAGNER-64N67W	2NWNW	PDC ENERGY INC
327777	BERNHARDT STATE PC N	36-17 TANK	NOBLE ENERGY INC
328050	BOOTH N (MULTI)	25-31D	PDC ENERGY INC
328051	BOOTH N (MULTI)	25-18D	PDC ENERGY INC
328056	BERNHARDT STATE	29-36	PDC ENERGY INC
328057	BERNHARDT-65N67W	36SENW	PDC ENERGY INC
328058	BERNHARDT-65N67W	36SESW	PDC ENERGY INC
329167	PHILLIPS-65N67W	23SENE	PDC ENERGY INC
329379	PHILLIPS-65N67W	23NENE	PDC ENERGY INC
334225	BOOTH-65N67W	25SWNE	PDC ENERGY INC

LOCATION ID	LOCATION NAME	LOCATION NUMBER	OPERATOR NAME
329450	BERNHARDT-64N67W	1NWNE	NOBLE ENERGY INC
329853	SANFORD	21-29 PAD	PDC ENERGY INC
329856	KAMMERZELL-65N66W	29SENW	NOBLE ENERGY INC
329857	BOOTH-65N67W	26NWSW	PDC ENERGY INC
329858	SCHNEIDER-65N67W	35SWNW	NOBLE ENERGY INC
329951	BOOTH-65N67W	25SWNW	PDC ENERGY INC
329952	BOOTH-65N67W	25SENW	PDC ENERGY INC
330081	D.L. PHILLIPS-65N67W	24NENW	NOBLE ENERGY INC
330139	UPRC-65N66W	31SWNW	PDC ENERGY INC
330259	HSR-NIES-65N67W	15SWSE	KERR MCGEE OIL & GAS ONSHORE LP
330282	SCOTT-65N67W	27SENE	KERR MCGEE OIL & GAS ONSHORE LP
330371	GOLDBERG-65N67W	24NWNE	NOBLE ENERGY INC
330372	GOLDBERG N-65N67W	24SWNE	NOBLE ENERGY INC
330485	HSR-VETTER-65N67W	36NWSW	PDC ENERGY INC
330486	HSR-VETTER-65N67W	36SWSW	PDC ENERGY INC
330551	MOORE-65N67W	13NESW	PDC ENERGY INC
330660	BASS N-65N67W	14NWSE	NOBLE ENERGY INC
330668	BLEHM N-65N67W	26NENW	NOBLE ENERGY INC
330681	MOORE-65N67W	13CSW	PDC ENERGY INC
330707	BLEHM N-65N67W	26SWNW	PDC ENERGY INC
330711	HSR-KINZER-65N67W	23NWNW	NOBLE ENERGY INC
330713	HSR-KINZER-65N67W	23SENW	NOBLE ENERGY INC
330922	D.L. PHILLIPS-65N67W	24NWSW	PDC ENERGY INC
330923	D.L. PHILLIPS-65N67W	24SENW	NOBLE ENERGY INC
330989	HANKINS-65N67W	22SESE	PDC ENERGY INC
331006	HANKINS-65N67W	22NESE	PDC ENERGY INC
331045	UPRC J-65N66W	31SENW	PDC ENERGY INC
331053	STATE BERNHARDT-65N67W	36SWNE	NOBLE ENERGY INC
331365	HSR-LUNDVALL-65N66W	19SENE	NOBLE ENERGY INC
331419	BERNHARDT-64N67W	1SWNE	NOBLE ENERGY INC
331644	HANKINS-65N67W	22SENE	PDC ENERGY INC
331646	HANKINS-65N67W	22SWNE	PDC ENERGY INC
331677	GOLDBERG N-65N67W	24SENE	NOBLE ENERGY INC
331692	GOLDBERG N-65N67W	14SWSW	NOBLE ENERGY INC
331703	GOLDBERG N-65N67W	14SESW	NOBLE ENERGY INC
331709	GOLDBERG N-65N67W	14NWSW	NOBLE ENERGY INC
331732	GOLDBERG N-65N67W	14NESW	NOBLE ENERGY INC
331858	STROH O-64N67W	2NENE	NOBLE ENERGY INC
331955	HANKINS-65N67W	22NENE	PDC ENERGY INC
332558	PHILLIPS	23-1-17	PDC ENERGY INC
332647	STUGART STATE	6-20	PDC ENERGY INC
332655	LOVELAND-64N67W	3SENE	KERR MCGEE OIL & GAS ONSHORE LP
332665	HONEY BADGER	J31-64-1HN PAD	PDC ENERGY INC
332666	UPRC-65N66W	31SWSW	NOBLE ENERGY INC
332687	BARNETT-65N66W	20SWNW	PDC ENERGY INC
332729	PHILLIPS	24-2-19 (DIR)	NOBLE ENERGY INC
332757	PHILLIPS	24-3-21	PDC ENERGY INC
332758	BLEHM N-65N67W	26NWNE	NOBLE ENERGY INC
332763	PHILLIPS	24-3-23	PDC ENERGY INC
332767	BOOTH N-65N67W	25CSW	NOBLE ENERGY INC
332777	GREELEY-65N66W	20NWNE	PDC ENERGY INC
332893	LUNDVALL-65N66W	18NESW	PDC ENERGY INC
332966	STEVE J-65N66W	18SWSE	NOBLE ENERGY INC




PDC

ENERGY

4000 Burlington Avenue

Evans, Colorado 80620



LOVELAND OFFICE

6706 North Franklin Avenue

Loveland, Colorado 80538

Phone 970-776-4331

SHERIDAN OFFICE

1095 Saberton Avenue

Sheridan, Wyoming 82801

Phone 307-674-0609

609

Consulting, LLC

Drawn by: AK

Revised:

Date: 14 Mar 2023


Date:

K:\SYNERGY RESOURCES\2018\2018_55_WINDOW_CHOPPER_DSU_207_&_208_T5N_R67W_SEC_24\GIS\FORM 2A MAPS\CAMERON_2_FORM_2A_FLOWLINE_MAP_TABLE_2.mxd 3/14/2023 10:46:57 AM

RELATED LOCATION & FLOWLINE MAP
CAMERON 2


SECTION 24, 25, & 36, TOWNSHIP 5 NORTH, RANGE 67 WEST, 6TH P.M., WELD COUNTY, COLORADO

LOCATION ID	LOCATION NAME	LOCATION NUMBER	OPERATOR NAME
336570	WIEDEMAN R J-65N66W	20SWSW	NOBLE ENERGY INC
336571	BARNETT-65N66W	20NWNW	PDC ENERGY INC
336601	BERNHARDT STATE	23-36	PDC ENERGY INC
336626	PHILLIPS	24-2-20	NOBLE ENERGY INC
416041	BERNHARDT	31-1	PDC ENERGY INC
417158	BERNHARDT STATE TANK BATTERY	29-36	PDC ENERGY INC
417272	BOOTH N MULTI	25-20D	NOBLE ENERGY INC
417457	BOOTH N (MULTI)	25-32D	PDC ENERGY INC
420586	PHILLIPS	24-3-21 TANK	PDC ENERGY INC
420743	PHILLIPS	23-1-17 TANK	PDC ENERGY INC
421078	BERNHARDT PC J	31-30D	NOBLE ENERGY INC
421156	BERNHARDT PC J	31-30D TANK	NOBLE ENERGY INC
421399	PHILLIPS	24-2-20 TANK	NOBLE ENERGY INC
426275	HANKINS	31-22H PAD	PDC ENERGY INC
446670	EHRlich TANK BATTERY	LOC	KERR MCGEE OIL & GAS ONSHORE LP
446678	BETHANIE 1		PDC ENERGY INC
448417	STROH	O02-08 TANK	PDC ENERGY INC
448562	HOMYAK #1 TB LOC.		EXTRACTION OIL & GAS INC
448598	KAMMERZELL 29 LOCATION		EXTRACTION OIL & GAS INC
448853	STROH	O02-07 TANK	NOBLE ENERGY INC
450411	WAGNER F 11-2P TANK BATTERY		PDC ENERGY INC
450475	GOLDBERG N	14-11,12,13,14,	NOBLE ENERGY INC
460998	BERNHARDT-64N67W	1NENE	NOBLE ENERGY INC
461008	KAMMERZELL		NOBLE ENERGY INC
461052	BOOTH N-65N67W	25CSW	NOBLE ENERGY INC
464272	BRIGGS-65N66W	17SWSE	PDC ENERGY INC
465064	LUNDVALL-65N66W	30NENW	PDC ENERGY INC
467491	BOOTH-65N67W	25SWNE	PDC ENERGY INC
467664	STROH N-65N67W	35NWSE	PDC ENERGY INC
467665	UPV-65N66W	29NWNE	PDC ENERGY INC
467669	VETTER-65N67W	26NWNE	PDC ENERGY INC
467670	VETTER-65N67W	26NWNE	PDC ENERGY INC
467671	VETTER-65N67W	35NENE	PDC ENERGY INC
467694	BOOTH N (MULTI)	25-31D	PDC ENERGY INC
467698	NYC N-65N67W	24SESE	PDC ENERGY INC
467701	LUNDVALL-65N66W	18NESW	PDC ENERGY INC
467702	HONEY BADGER	J31-64-1HN TANK	PDC ENERGY INC
468101	HSR-WIEDEMAN-65N66W	20SESW	PDC ENERGY INC
470527	STROH R O-64N67W	2NWNE	PDC ENERGY INC
471279	LUNDVALL		PDC ENERGY INC
471366	HSR-STROH		PDC ENERGY INC
471510	BOOTH		PDC ENERGY INC
471733	SMITH-REEVES	27-1	PDC ENERGY INC
472103	PDC LOCATION	5N66W	PDC ENERGY INC
472161	CHISMAR / SHEEP DRAW	19-21, 22, 24	PDC ENERGY INC
472188	FERGUSON	17-31	PDC ENERGY INC
472487	LUNDVALL	UP 7-19	PDC ENERGY INC
472571	PHILLIPS	23-41,42,43	PDC ENERGY INC
473149	RIDGE STATE	33-17 PAD	PDC ENERGY INC
474940	BERNHARDT-PM-64N66W	6NWNW	PDC ENERGY INC



PDC
ENERGY

4000 Burlington Avenue
Evans, Colorado 80620



LOVELAND OFFICE
6706 North Franklin Avenue
Loveland, Colorado 80538
Phone 970-776-4331

SHERIDAN OFFICE
1095 Saberton Avenue
Sheridan, Wyoming 82801
Phone 307-674-0609

609
Consulting, LLC

Drawn by: AK
Revised:

Date: 14 Mar 2023
Date: