

SITE SAFETY AND EMERGENCY ACTION PLAN
PDC ENERGY, INC.



District Office
1775 Sherman Street, Suite 3000
Denver, CO 80203

GUANELLA COMPREHENSIVE AREA PLAN (CAP)
WELD COUNTY, COLORADO

Proposed Spud Date: 3Q Quarter 2023
(See development schedule on next page)

EXECUTIVE SUMMARY

This Emergency Action Plan (EAP) was prepared at the request of Weld County in support of PDC Energy, Inc's (PDC) Guanella Comprehensive Area Plan (CAP). The Guanella CAP includes the construction, drilling, completion, and production of 22 oil and gas well pads (Locations) over a period of 10 years. This EAP has been prepared to assist local agencies with critical information that may aid first responders and company personnel during an emergency in accordance with Weld County Code Sec. 21-5-3320.

The EAP template and supporting Tactical Response Plans (TRP), to be submitted for each CAP Location, are designed to comply with the Colorado Oil and Gas Conservation Commission (COGCC) Form 2A and *Rule 602. J Emergency Response Plan, Guidance Plan Elements*. A summary of CAP development phases, locations, and an estimated schedule is provided in Table 1 below.

Table 1 - Guanella CAP Development Summary

Development Phase and Location Name	Legal Location*	Development Schedule
Cameron		
Bypass State	Sec. 18, T5N, R66W; Sec. 13, T5N, R67W	4Q 2023
Denali State	Sec. 13, T5N, R67W	3Q 2024
Windom	Sec. 24, T5N, R67W	1Q 2024
Booth State	Sec. 25, T5N, R67W	4Q 2024
Bona State	Sec. 36, T5N, R67W	3Q 2025
Trout Creek		
Sanford State	Sec. 29, T5N, R66W	3Q 2025
Belford	Sec. 35, T5N, R67W; Sec. 3, T4N, R67W; Sec. 2, T4N, R67W	1Q 2027
Quandary	Sec. 32, T5N, R66W	4Q 2025
Yale	Sec. 6, T4N, R66W	2Q 2027
Battle Mountain		
Fuji Federal	Sec. 25, T4N, R66W; Sec. 26, T4N, R66W	3Q 2026
St Helens	Sec. 24, T4N, R66W	4Q 2026
Raton		
Capitol	Sec. 36, T5N, R66W; Sec. 1, T4N, R66W	4Q 2024
Blackburn Federal	Sec. 1, T4N, R66W	3Q 2024
Oxford	Sec. 3, T4N, R66W	3Q 2027
Trail Ridge		
Maroon Bells	Sec. 19, T4N, R66W	4Q 2027
Redoubt Federal	Sec. 15, T4N, R66W; Sec. 22, T4N, R66W	1Q 2028
Fremont		
Thera	Sec. 13, T4N, R66W; Sec. 14, T4N, R66W	3Q 2028
Arenal Federal	Sec. 9, T4N, R66W; Sec. 16, T4N, R66W	4Q 2028
Teton	Sec. 11, T4N, R66W	1Q 2029
Augusta Federal	Sec. 7, T4N, R65W	2Q 2029
Bierstadt Federal	Sec. 6, T4N, R65W; Sec. 7, T4N, R65W	3Q 2029

* Sec. = Section, T = township, R = range; all sites within 6th Prime Meridian

TABLE OF CONTENTS

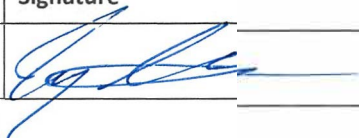
1	APPROVAL SIGNATURES	1
2	SITE ADDRESS AND DIRECTIONS.....	2
2.1	Directions	2
2.2	Ingress and Egress Information	4
	Table 2 – Legal Locations, GPS Coordinates, City, and FPD	5
2.3	Emergency Evacuation/Muster Assembly Point(s).....	6
3	LIST OF EMERGENCY CONTACTS	6
3.1	Energy Company (PDC Energy).....	6
3.2	PDC Community/Media Relations	7
3.3	First Responders (Fire, EMS, HazMat)	7
3.4	Local, State, and Federal Contacts	7
3.5	Medical Facilities (Nearest locations to site)	8
3.6	Spill Response Organization (Contracted)	8
3.7	Loss of Well Control	8
3.8	Railroad Emergency Response (if applicable).....	8
3.9	Mutual-Aid	8
4	SITE SPECIFIC INFORMATION	8
4.1	Site Description	8
4.2	Nearby Schools, High Occupancy Buildings, Waterways	9
4.3	Site Safety Requirements and General Safety Information	11
4.4	Safety Data Sheets	11
5	SPILL RESPONSE AND CLEAN-UP	11
5.1	Spill Response.....	11
5.2	Spill Reporting	12
6	REPORTABLE QUANTITIES.....	14
6.1	Reportable Quantities	14
6.2	Reportable Requirements	14
7	EVACUATION INFORMATION	14
7.1	Evacuation Plan Procedures (public)	14
8	TRAINING AND EXERCISES	15
9	COORDINATION WITH FIRST RESPONDERS.....	15
10	PLAN REVIEW AND UPDATE PROCEDURES	16

1 APPROVAL SIGNATURES

Instructions: PDC Representative to sign with concurrence review by local Fire District in alignment with COGCC FORM 2 A and Rule 602. J Emergency Response Plan, Guidance Plan Element 2.

ENERGY COMPANY

PDC Energy, Inc.

Name	Signature	Title	Date
Zack Liesenkeld		EHS Rep.	8/25/2022

FIRE DISTRICTS


Greeley Fire

Name	Signature	Title	Date
Greg Backer	Via phone Call	Deputy Fire Marshal	10/11/22

Evans Fire Protection District

Name	Signature	Title	Date
Joe DeSalvo	Via Email	Fire Chief	10/11/2022


Front Range Fire Protection District

Name	Signature	Title	Date
Tyler Drage		Deputy Chief / Fire Marshal	10-06-2022

La Salle Fire Protection District

Name	Signature	Title	Date
Bear Hulsey	Via Email	Fire Chief	10/11/2022

Platteville - Gilcrest Fire Protection District

Name	Signature	Title	Date
Jeff Cogburn		Fire Protection Specialist	10/4/2022

WELD COUNTY OFFICE OF EMERGENCY MANAGEMENT

Digitally Signed: _____

2 SITE ADDRESS AND DIRECTIONS

Guanella Cap Locations (proposed well pads, production facilities, and access roads) are illustrated in the **Guanella CAP Overview and Development Phases (Figure 1)**. This map also illustrates the six development phases that the CAP will follow as it progresses.

2.1 Directions¹

DRIVING DIRECTIONS TO BYPASS STATE: From the intersection of County Road 58 and County Road 25, drive south on County Road 25 for approximately 0.25 miles, then turn east onto the well pad access road and continue east for 0.2 miles along the well pad access road to the Bypass State location.

DRIVING DIRECTIONS TO DENALI STATE: From the intersection of County Road 58 and County Road 25, drive south on County Road 25 for approximately 1.0 mile, then turn west onto an existing access road and follow the access for 0.5 miles to the Denali State location.

DRIVING DIRECTIONS TO WINDOM: From the intersection of County Road 54 and County Road 25, drive west on County Road 54 for approximately 0.5 miles, then turn north onto the well pad access road and follow the access for 0.3 miles to the Windom location.

DRIVING DIRECTIONS TO BOOTH STATE: From the intersection of County Road 54 and County Road 25, drive south on County Road 25 for approximately 0.5 miles, then turn west onto the well pad access road, then immediately turn south and when the access turns west and follow for 0.1 miles to the Booth State location.

DRIVING DIRECTIONS TO BONA STATE: From the intersection of County Road 52 and County Road 25, drive south on County Road 25 for approximately 0.8 miles, then turn west onto an existing access road and follow the access west and north for approximately 0.25 miles to the Bona State location.

DRIVING DIRECTIONS TO SANFORD STATE: From the intersection of County Road 54 and 77th Avenue, drive south along 77th Avenue for 0.2 miles, then turn west and immediately south onto the access road and follow the access approximately 0.25 miles to the Sanford State location.

¹ This EAP was prepared in the spring of 2022; prior to the construction of the proposed Guanella CAP new well pads, well pad expansions, and associated access roads. However, for ease in use of this EAP, the directions to each Location are written as if the access roads to each new/expanded well pad are currently in place.

DRIVING DIRECTIONS TO BELFORD: From the intersection of County Road 52 and County Road 21, drive south on County Road 21 for approximately 1.15 miles, then turn east onto an existing access road, then continue on the access road east for approximately 0.3 miles to the Belford location.

DRIVING DIRECTIONS TO QUANDARY: From the intersection of W. 49th Street and 77th Avenue, drive south along 77th Avenue for approximately 0.4 miles, then turn east onto the existing access road and continue southeast for approximately 0.3 miles to the Quandary location.

DRIVING DIRECTIONS TO YALE: From the intersection of County Road 52 and County Road 25, drive south on County Road 25 for approximately 1.8 miles, then turn east onto an existing access road (not part of the PDC location) and follow the access east for approximately 0.4 miles, then turn north onto the well pad access road and continue for 0.2 miles to the Yale location.

DRIVING DIRECTIONS TO FUJI FEDERAL: From the intersection of County Road 42 and County Road 35, drive south on County Road 35 for approximately 0.5 miles, then turn east onto an existing access road and continue east for approximately 0.15 miles to the Fuji Federal location.

DRIVING DIRECTIONS TO ST HELENS: From the intersection of County Road 42 and County Road 35, drive north on County Road 35 for approximately 0.45 miles, then turn east onto the well pad access road and continue east for approximately 0.5 miles to the St Helens location.

DRIVING DIRECTIONS TO CAPITOL: From the intersection of County Road 394 and County Road 35, drive northeast on County Road 394 for approximately 0.5 miles, then turn south onto the well pad access road and continue south for approximately 0.15 miles to the Capital Location.

DRIVING DIRECTIONS TO BLACKBURN FEDERAL: From the intersection of County Road 48 and County Road 35, drive east on County Road 48 for approximately 0.9 miles, then turn northeast onto an existing access road (not part of the PDC location) north of state highway 85 and continue for approximately 0.15 miles to the well pad access road and continue north for approximately 0.15 miles to the Blackburn location.

DRIVING DIRECTIONS TO OXFORD: From the intersection of County Road 394 and County Road 33, enter the well pad access road immediately north of County Road 394 and continue for approximately 0.2 miles to the Oxford location on the west.

DRIVING DIRECTIONS TO MAROON BELLS: From the intersection of County Road 42, County Road 25 ½, and the well pad access road, drive north on the well pad access road for approximately 0.5 miles, then follow the proposed access road east for approximately 0.2 miles to the Maroon Bells location.

DRIVING DIRECTIONS TO REDOUBT FEDERAL: From the intersection of County Road 44 and County Road 31, drive south on County Road 31 for approximately 0.3 miles, then turn east onto the well pad

access road and continue east for approximately 0.1 miles, north for less than 0.1 miles, and finally east for 0.1 miles to the Redoubt Federal location.

DRIVING DIRECTIONS TO THERA: From the intersection of County Road 44 and County Road 35, drive north on County Road 35 for approximately 0.15 miles, then turn east onto an existing access road and continue east for approximately 0.2 miles, continue north for 0.1 miles to the Thera location.

DRIVING DIRECTIONS TO ARENAL FEDERAL: From the intersection of County Road 46 and County Road 31, drive west on County Road 46 for approximately 0.5 miles, then turn south onto the well pad access road and continue south for approximately 0.2 miles to the Arenal location on the south.

DRIVING DIRECTIONS TO TETON: From the intersection of County Road 46 and County Road 33, drive east on County Road 46 for approximately 0.25 miles, then turn north onto the well pad access road and continue north for approximately 0.2 miles, continue east for 0.25 miles, and north for 0.15 miles to the Teton location on the west.

DRIVING DIRECTIONS TO AUGUSTA FEDERAL: From the intersection of County Road 46 and County Road 39, drive north on County Road 39 for approximately 0.85 miles, then turn west onto the well pad access road and immediately continue south for approximately 0.5 miles to the Augusta Federal location on the north.

DRIVING DIRECTIONS TO BIERSTADT FEDERAL: From the intersection of County Road 46 and County Road 39, drive north on County Road 39 for approximately 0.85 miles, then turn west onto the well pad access road for 1.1 miles to the Bierstadt Federal location.

2.2 Ingress and Egress Information

Most the county and residential roads near the Locations are constructed of gravel and/or dirt. A total of 9.09 miles of new access roads would be constructed for the Locations in the CAP. Existing roads used to get to these new access roads would be improved for temporary access and would be returned to their previous condition after construction unless the landowner requests that the well pad road remain in place. Figure 2 illustrates the CAP access routes to the Locations as well as the haul routes to disposal locations.

All traffic into and out of Guanella CAP Locations will be required to check-in and check-out with security. All ingress and egress routes will be clearly identified and kept clear of parked/staged vehicles at all times. Table 2 provides the legal location, Latitude and Longitude coordinates, city and zip code, and fire protection district (FPD) for each Location.

Table 2 – Legal Locations, GPS Coordinates, City, and FPD

Development Phase and Location Name	Legal Description (S/T/R)	Coordinates	City, State, Zip	Fire Protection District (FPD)
Cameron				
Bypass State	Sec. 18, T5N, R66W; Sec. 13, T5N, R67W	40.401713, -104.828722	Greeley, CO 80634	Greeley Fire
Denali State	Sec. 13, T5N, R67W	40.393701, -104.842492	Greeley, CO 80634	Greeley Fire
Windom	Sec. 24, T5N, R67W	40.382753, -104.839728	Milliken, CO 80543	Front Range FPD
Booth State	Sec. 25, T5N, R67W	40.370905, -104.835341	Milliken, CO 80543	Front Range FPD
Bona State	Sec. 36, T5N, R67W	40.355367, -104.833491	Milliken, CO 80543	Front Range FPD
Trout Creek				
Sanford State	Sec. 29, T5N, R66W	40.370888, -104.804420	Greeley, CO 80634	Front Range FPD
Belford	Sec. 35, T5N, R67W; Sec. 3, T4N, R67W; Sec. 2, T4N, R67W	40.348061, -104.863096	Milliken, CO 80543	Front Range FPD
Quandary	Sec. 32, T5N, R66W	40.354894, -104.799523	Greeley, CO 80634	Front Range FPD
Yale	Sec. 6, T4N, R66W	40.342332, -104.819371	Milliken, CO 80543	Front Range FPD
Battle Mountain				
Fuji Federal	Sec. 25, T4N, R66W; Sec. 26, T4N, R66W	40.284175, -104.732009	La Salle, CO 80645	La Salle FPD
St Helens	Sec. 24, T4N, R66W	40.295717, -104.726055	La Salle, CO 80645	La Salle FPD
Raton				
Capitol	Sec. 36, T5N, R66W; Sec. 1, T4N, R66W	40.349245, -104.726643	La Salle, CO 80645	La Salle FPD
Blackburn Federal	Sec. 1, T4N, R66W	40.338941, -104.717987	La Salle, CO 80645	La Salle FPD
Oxford	Sec. 3, T4N, R66W	40.341868, -104.755659	La Salle, CO 80645	Evans FPD
Trail Ridge				
Maroon Bells	Sec. 19, T4N, R66W	40.297932, -104.815105	Platteville, CO 80651	Platteville – Gilcrest FPD
Redoubt Federal	Sec. 15, T4N, R66W; Sec. 22, T4N, R66W	40.303629, -104.769663	La Salle, CO 80645	Platteville – Gilcrest FPD La Salle FPD
Fremont				
Thera	Sec. 13, T4N, R66W; Sec. 14, T4N, R66W	40.311006, -104.730804	La Salle, CO 80645	La Salle FPD
Arenal Federal	Sec. 9, T4N, R66W; Sec. 16, T4N, R66W	40.315696, -104.781664	Platteville, CO 80651	Platteville – Gilcrest FPD
Teton	Sec. 11, T4N, R66W	40.323406, -104.745287	La Salle, CO 80645	La Salle FPD

Development Phase and Location Name	Legal Description (S/T/R)	Coordinates	City, State, Zip	Fire Protection District (FPD)
Augusta Federal	Sec. 7, T4N, R65W	40.327964, -104.703749	La Salle, CO 80645	La Salle FPD
Bierstadt Federal	Sec. 6, T4N, R65W; Sec. 7, T4N, R65W	40.333224, -104.703978	La Salle, CO 80645	La Salle FPD

Note – API and site addresses are pending COGCC Permit Approval (Weld OEM will provide physical address for 911 dispatching).

2.3 Emergency Evacuation/Muster Assembly Point(s)

For incidents were remaining in a particular area could pose a hazard to personnel onsite, such as a fire or hazardous material release, evacuation may be required to ensure the safety of onsite personnel. In the event of an emergency, site personnel will initially be evacuated to pre-designated muster assembly points.

- The Muster assembly points are identified in **Figure 3** of this plan and noted on the site-specific TRPs for each Location.
- The Muster assembly points will be identified during all site safety briefings for visitors, employees, and contract personnel.
- Sign-In Sheets: During drilling and completion activities all employees and approved visitors to the Guanella CAP Locations will be required to enter through a staffed security checkpoint. Upon checking in, employees and visitors will be provided a detailed safety briefing of current operations, all safety precautions that must be adhered to, and the site emergency evacuation plan. In addition, all personnel who enter the location must sign-out upon their departure. Security or Supervisory personnel are required to account for all persons entering or leaving during active operations and in the event of an incident.
- Once drilling and completion activities are finalized, the site will transition to its production phase and no unauthorized personnel will be allowed on location without first contacting a company representative.

3 LIST OF EMERGENCY CONTACTS

3.1 Energy Company (PDC Energy)

Name	Office Phone	Emergency/Cell
Corporate Office: 1775 Sherman Street, Suite 3000 Denver, CO 80203	303-860-5800	877-350-0169
Field Office: 4000 Burlington Ave, Evans, CO 80620	970-506-9272	877-350-0169
Energy Company EHS on-call Emergency Number	970-506-9272	303-831-3900
EHS Supervisor: Jason Thron	970-509-9272	303-831-3900
EHS – Safety	970-509-9272	303-831-3900

EHS – Environmental	970-509-9272	303-831-3900
---------------------	--------------	--------------

3.2 PDC Community/Media Relations

Name	Office Phone	Cell Phone
Courtney Loper	303-831-3997	202-744-3255

3.3 First Responders (Fire, EMS, HazMat)

Name	Emergency Number	Non-Emergency Number
*All emergency notifications require notification to 911 first		
Greeley Fire	911	970-350-9504
Front Range Fire Rescue Fire Protection District	911	970-587-4464
Evans Fire Protection District	911	970-339-3920
Platteville - Gilcrest Fire Protection District	911	970-785-2232
La Salle Fire Protection District	911	970-284-6336
Weld County Sheriff	911	970-356-4015
Colorado State Highway Patrol	911	970-506-4999
Greeley Police Department	911	970-350-9605
Evans Police Department	911	970-339-2441
Platteville Police Department	911	970-785-2215
Johnstown Police Department	911	970-587-5555
Kersey Police Department	911	970-353-1681

3.4 Local, State, and Federal Contacts

Name	Emergency Number	Non-Emergency Number
Weld County Oil and Gas Energy Department	none	970-400-3580
Weld County Office of Emergency Management	911	970-304-6540
COGCC	none	303-894-2100
CDPHE	none	877-518-5608
Colorado Parks & Wildlife	none	303-291-7227
National Response Center	800-424-8802	none

3.5 Medical Facilities (Nearest locations to site)

Name	Office Phone
North Colorado Medical Center	970-352-4121
Medical Center of the Rockies	970-624-2500
North Colorado Medical Facility (Burn Unit)	970-810-4121

3.6 Spill Response Organization (Contracted)

Name	24/7 Emergency Number	Non-Emergency Number
CTEH: James Panasiuk	866-869-2834	501-952-3972
Tasman	303-487-1228	303-487-1228

3.7 Loss of Well Control

Name	24/7 Emergency Number	Non-Emergency Number
Wild Well Control, Inc. (Contracted Well Specialist)	281-784-4700	281-353-5481

3.8 Railroad Emergency Response (if applicable)

Name	24/7 Emergency Number
Union Pacific Railroad	888-877-7267

3.9 Mutual-Aid

All mutual-aid coordination within Weld County will be in accordance with the current Weld County Fire Chiefs Association Mutual-Aid Agreement. In addition, due to the size of Weld County and the large number of Fire Departments that make up the Weld County Fire Chiefs Association's, mutual-aid may involve a combination of full-time, part-time, and volunteer fire department resources responding to an incident at Guanella CAP Locations.

4 SITE SPECIFIC INFORMATION

4.1 Site Description

The 22 Guanella CAP Locations are PDC oil and gas well pads that will support 445 horizontal oil and gas wells.

PDC is proposing tankless facility design of Locations in this CAP as it pertains to hydrocarbons. Under the tankless design there would be zero oil tanks at each Location, thereby eliminating hydrocarbon

storage. The facilities would be constructed with two produced water tanks or vaults and two maintenance tanks.

As part of the Weld County 1041 WOGLA permit process, the following sections of County Code address site layout, site drawings, and identify any sensitive areas and discuss any mitigation measures needed.

- Sec. 21-5-312 – Comprehensive Development Plans (CDPs)
- Section 21-5-320 – Application requirements for 1041 WOGLA Permit

Development Phases: PDC's systematic phased development will minimize the duration of construction, drilling, and completion operations in each Development Phase, thereby limiting potential disruptions associated with these activities on nearby communities and resources. By moving sequentially through each Development Phase, usually with a single drilling rig, PDC will restrict the footprint of active oil and gas development at any given time to smaller geographic areas within the CAP, thereby reducing impacts to community members and other resources. Phased development also would provide greater transparency for local governments and community members regarding what PDC development activity would be occurring, when, and where throughout the CAP.

4.2 Nearby Schools, High Occupancy Buildings, Waterways

Schools: There are no schools within 2,500 feet of a Guanella CAP location.

High Occupancy Buildings: The Guanella CAP consists of agricultural, rangeland, and residential areas within its boundary. There are no high occupancy buildings within 2500 feet of a Location as indicated on the sensitive receptors figures in the **Figure 4** map book.

Waterways: The Guanella CAP is located within the Coalbank Creek-Cache la Poudre River (Hydrologic Unit Code [HUC] 1019000710), Outlet Big Thompson River (HUC 1019000606), and Little Dry Creek-South Platte River (HUC 1019000306) watersheds. Due to the magnitude of farming and livestock land use in Weld County and proximity to the Cache la Poudre, Big Thompson, and South Platte Rivers, most of the surface water conveyances within the Guanella CAP are agricultural irrigation ditches. A review of the water features in the area has identified numerous National Hydrography Dataset (NHD) flowlines and National Wetlands Inventory (NWI) wetlands including riverine, emergent, shrub/forested, and freshwater pond features within the CAP boundary.

In addition, several Federal Emergency Management Agency (FEMA) 100-year flood zones associated with the Cache la Poudre River, Big Thompson River, and South Platte River watersheds are present in the CAP boundary.

Table 3 provides the nearest mapped water feature to the 25 Guanella CAP Locations, as measured from the edge of the Working Pad Surface (WPS).

Table 3 - Nearest Mapped (NHD/NWI) Water Feature to CAP Locations

Development Phase and Location	Nearest Riparian Area*	Nearest Surface Water*	Nearest Wetland*
Cameron			
Bypass State	2,379 feet NW	494 feet SE (Boomerang Ditch)	429 feet SE (freshwater pond)
Denali State	1,667 feet NW	65 feet NE (unnamed stream)	55 feet NE (riverine)
Windom	4,470 feet SE	40 feet NW (unnamed stream)	30 feet NW (riverine)
Booth State	435 feet SE	230 feet NW (unnamed stream)	546 feet SE (emergent wetland)
Bona State	3,320 feet NE	109 feet SW (unnamed stream)	80 feet SW (emergent wetland)
Trout Creek			
Sanford State	1,848 feet NE	536 feet NE (unnamed stream)	523 feet SE (riverine)
Belford	380 feet SW	442 feet NW (Big Thompson River)	306 feet SW (forested/shrub wetland)
Quandary	1,530 feet SW	649 feet NE (unnamed stream)	30 feet S (emergent wetland)
Yale	1,224 feet SE	0 feet (unnamed stream)	0 feet (riverine)
Battle Mountain			
Fuji Federal	4,940 feet SW	743 feet NW (unnamed stream)	611 NW (freshwater pond)
St Helens	7,158 feet SE	1,821 feet SE (unnamed waterbody)	1,307 feet SE (freshwater pond)
Raton			
Capitol	1,779 feet NE	342 feet NE (Godfrey Ditch)	151 feet SE (freshwater pond)
Blackburn Federal	3,929 feet NW	620 feet NW (Farmers Independent Ditch)	577 feet NW (riverine)
Oxford	570 feet NW	135 feet NW (Godfrey Ditch)	113 feet NW (riverine)
Trail Ridge			
Maroon Bells	1,182 feet NW	133 feet NE (unnamed waterbody)	92 feet SE (freshwater pond)
Redoubt Federal	10,442 feet NW	206 feet NE (Western Mutual Ditch)	200 feet NE (riverine)
Fremont			
Thera	10,730 feet NW	77 feet NW (Western Mutual Ditch)	71 feet NW (riverine)
Arenal Federal	4,897 feet NW	3,157 NW (Union Ditch)	1,383 SE (freshwater pond)
Teton	6,007 feet NE	94 feet SE (Farmers Independent Ditch)	80 feet SE (riverine)

Development Phase and Location	Nearest Riparian Area*	Nearest Surface Water*	Nearest Wetland*
Augusta Federal	6,941 feet SE	0 feet (unnamed stream)	0 feet (riverine)
Bierstadt Federal	7,398 feet SE	223 feet NE (unnamed waterbody)	387 feet SE (riverine)

* Distance in feet and direction; N = north, S = south, E = east, W = west, NE = northeast, NW = northwest, SE = southeast, SW = southwest

Based on NWI data, there are two Locations (Yale and Augusta Federal Locations) that have mapped NWI features that could be directly impacted by proposed development, and several Locations that have a mapped water feature within 500 feet of the proposed Location and would potentially require a waiver from the Colorado Parks and Wildlife (CPW). For any Location that would directly or indirectly impact a mapped water feature, PDC will conduct a site-specific field evaluation and if needed, a formal wetland delineation would be completed prior to the COGCC Form 2A application process.

4.3 Site Safety Requirements and General Safety Information

The minimum personal protective equipment (PPE) to enter any PDC production location includes hard hat, safety glasses, safety toe boots, fire resistant clothing (FRC), and a 4-gas personal monitor. All contractors and visitors are responsible for providing their employees with the appropriate training on and use of PPE while on PDC locations. In addition, all contract personnel entering a PDC Location to perform work must understand and abide by PDC contractor expectations relating to environmental, health, and safety requirements.

The primary hazards that any person must be aware of while on an PDC production location include, but are not limited to, the potential for a release of hydrocarbon gases and/or liquids from production equipment, heavy truck and equipment traffic, loud noise, high pressures, and the potential for a flash fire. These hazards can vary depending on the type of work being performed.

4.4 Safety Data Sheets

Depending on the operations taking place on location, chemicals stored on-site may vary. In accordance with 49 CFR 1910.1200, Safety Data Sheets (SDS) will be made available for site personnel performing work and for first responders in a centralized location onsite.

5 SPILL RESPONSE AND CLEAN-UP

5.1 Spill Response

There are multiple types of hydrocarbons and or chemicals stored onsite which can be released/spilled during oil and gas production and exploration. Most commonly released are unrefined products such as crude oil and produced water. Refined petroleum products such as diesel, gasoline, produced oils, and motor oil spills are less common, but still equally important to mitigate. If a spill is discovered, it will be

mitigated in accordance with Colorado Oil and Gas Conservation Commission (COGCC), Colorado Department of Public Health and Environment (CDPHE), and Weld County Local Emergency Planning Committee (LEPC) requirements.

Once a release has been discovered, it will be immediately stopped and contained if possible and is safe to do so. When containing a spill; a combination of sorbent rolls, pads, mats, socks, or containment boom may be deployed, or earthen berms will be constructed around the release to keep spilled material contained and from spreading. These materials will be provided by PDC and the contract company and kept on-site during all construction phases. During a spill, efforts will be made to minimize contact with live vegetation, nearby drainage, rivers, creeks, or streams. If the release is outside of secondary containment or poses a threat to flow off site, or impact environmentally sensitive areas, the spill response contractor should be notified for cleanup assistance, if needed, and for removal and disposal of spilled materials and contaminated areas.

In the event of a large incident requiring outside assistance/cascading resources, PDC has contracted with a Consulting Spill Management Team (SMT) CTEH. The CTEH team possesses a working knowledge of oil and gas operations, emergency response procedures, and the Incident Command System (ICS). Once notified CTEH personnel can be on location within 12 hours.

5.2 Spill Reporting

The person reporting a spill may be required to supply the minimum spill assessment information to provide as a complete understanding of the incident as possible to local, state, or federal agencies if applicable. Some initial spill response actions and information that may be reported are presented below:

- A spill/release will be reported to the COGCC if released material is property of PDC and meets the COGCC reporting thresholds (see below), an example would be crude oil released from a separator or produced water from a water vault.
- A spill/release will be reported to the Weld County LEPC if released material is property of PDC and meets the Weld County reporting thresholds (see below) Mandated by Section 304 of the Emergency Planning and Community Right-To-Know Act (EPCRA).

Spill Release Reporting Thresholds

Spill Release Reporting Agency	Regulatory Requirement	Reporting Contact	Reportable Quantity Thresholds (24-hour Notification)
CDPHE	Colorado Water Quality Control	CDPHE Emergency Response Center 877-518-5608	1. A release of any chemical, oil, petroleum product, sewage, etc., which may enter waters of the State of Colorado (which include surface water, ground water and dry gullies or storm sewers leading to surface

	Act § 25-8-601(2), C.R.S. <i>Spill Reporting Requirements</i>		<p>water) must be reported to CDPHE immediately (25-8-601 CRS).</p> <ul style="list-style-type: none"> Written notification to CDPHE must follow within five (5) days (5 CCR 1002-61, Section 61.8(5)(d)) describing the release and associated emergency. <p>2. Petroleum releases of 25 gallons or more (or any size that causes a sheen on nearby surface waters) from regulated aboveground and underground fuel storage tanks (includes spills from fuel dispensers) must be reported to the Division of Oil and Public Safety (303-318-8547) within 24 hours.</p>
COGCC	COGCC Rule 912.b. <i>Reporting Spills or Releases of E&P Waste, Gas, or Produced Fluids</i>	COGCC Director Contact verbally, via electronic mail, or on a Form 19 (Spill/Release Report – Initial)	<p>1. Spill or Release of any size that impacts or threatens to impact any Waters of the State, Public Water System, residence or occupied structure, livestock, wildlife, or publicly maintained road.</p> <p>2. A Spill or Release in which 1 Barrel or more of E&P Waste or produced Fluids is spilled or released outside of berms or other secondary containment.</p> <p>3. A Spill or Release of 5 Barrels or more of E&P Waste or produced Fluids regardless of whether the Spill or Release is completely contained within berms or other secondary containment.</p> <p>4. The discovery of 10 cubic yards or more of impacted material resulting from a current or historic Spill or Release. Discovery and reporting will not be contingent upon confirmation samples demonstrating exceedance of Table 915-1 standards.</p> <p>5. The discovery of impacted Waters of the State, including Groundwater. Discovery and reporting will not be contingent upon confirmation samples demonstrating exceedance of Table 915-1 standards. The presence of free product or hydrocarbon sheen on Groundwater or surface water is reportable. The presence of contaminated soil in contact with Groundwater or surface water is reportable.</p> <p>6. A suspected or actual Spill or Release of any volume where the volume cannot be immediately determined, including a Spill or Release of any volume that daylights from the subsurface.</p>
Weld County LEPC		LEPC On-Line Spill Report Form www.weldgov.com	<p>1. For all incidents listed above, local emergency response agencies must be notified. Weld OEM/LEPC will receive all Tier II Reports from the State of Colorado.</p>

Once a spill is determined reportable, there is a 24-hour deadline to make initial notification to the appropriate agency(ies) depending on the product ownership. Spills/releases in the custody of PDC will be reported by a Company representative. Spills/releases in the custody of a third party will be reported by the responsible company's EHS Department to the appropriate agency and to PDC

These regulatory guidelines will be strictly followed by PDC and any contractors operating under PDC guidance during all activities at the Guanella CAP Locations.

6 REPORTABLE QUANTITIES

6.1 Reportable Quantities

Mandated by Section 312 of the Emergency Planning and Community Right-To-Know Act (EPCRA) – also known as SARA Title III – the Tier II form captures information about the types, quantities, and locations of hazardous chemicals at a given facility. The form also lists contact information for the facility's designated emergency point-of-contact.

- Any facility that is required to maintain Material Safety Data Sheets (MSDSs or SDSs) under the Occupational Safety and Health Administration (OSHA) 49 CFR 1910.1200 regulations for hazardous chemicals stored or used in the workplace.
- Facilities must report chemicals with quantities that equal or exceed the above threshold lists.
- Propane, benzene, propane, and methane are on the lists of lists and are known to be in crude oil. In addition, diesel is on the lists of lists and may be stored on oil and gas sites during construction and development.

6.2 Reportable Requirements

Instructions: If your facility will meet the requirements under 40 CFR Part 370, you must submit your Tier II report to the State of Colorado every year before March 1st.

These regulatory requirements will be strictly followed by PDC and any contractors operating under PDC during all activities at the Guanella CAP Locations.

7 EVACUATION INFORMATION

7.1 Evacuation Plan Procedures (public)

The procedure to be used in alerting the public in the event of an incident that could pose a threat to life or property will be arranged and coordinated with first responders and Weld County Emergency Management.

In the event of an actual emergency, the following steps will be immediately taken:

1. The PDC representative will immediately notify first responders (911), to warn the public of a potential chemical exposure.
2. First responders may conduct door to door evacuation notices in addition to reverse 911 and utilizing the Integrated Public Alert and Warning System (IPAWS).
3. PDC will monitor essential and non-essential personnel traffic on or near the incident site.
4. General:
 - a. The area included within the radius of exposure is considered to be the zone with the maximum potential hazard, per the Pipeline and Hazardous Materials Safety

Administration (PHMSA) 2020 Emergency Response Guidebook (ERG). When it is determined that conditions exist that create an additional area (beyond the initial zone of maximum potential hazard) vulnerable to possible hazard, public areas in the additional hazardous area will be evacuated.

- b. In the event of an incident, after the public areas have been evacuated and traffic stopped, it is expected that local civil authorities will have arrived and within a few hours will have assumed direction of and control of the public, including all public areas.
- c. PDC will cooperate with these authorities to the fullest extent and will exert every effort to provide detailed information to such authorities to prevent panic or rumors.

PDC will dispatch appropriate personnel to the disaster site as soon as possible. The company's personnel will cooperate with and provide such information to civil authorities as they might require.

8 TRAINING AND EXERCISES

TRAINING: The National Incident Management System (NIMS) guides all levels of government, nongovernmental organizations, and the private sector to work together to prevent, protect against, mitigate, respond to and recover from incidents.

NIMS provides stakeholders across the whole community with the shared vocabulary, systems, and processes to successfully deliver the capabilities described in the National Preparedness System. NIMS defines operational systems that guide how personnel work together during incidents.

To maximize PDC Energy, Inc's impact and willingness to participate in incident operations, PDC should coordinate and integrate with first responders into a Unified Command (UC)—including planning, training, and preparedness exercises. In addition, it is also recommended all PDC employees who will respond to an incident have training in ICS 100, ICS 200, and ICS 700 at a minimum, for company and agency emergency response interoperability to manage a response.

EXERCISES: Exercises are an important component to test an organization's response readiness, training and familiarity with various emergency response scenarios, participation and engagement with local and or state agencies, and to develop lessons learned to improve emergency response capabilities. A proposed schedule for coordination with first responders and types of plan review and updates are provided in Sections 10 and 11 below.

9 COORDINATION WITH FIRST RESPONDERS

- a. PDC will communicate site construction, drill spud, completion operations, and Production Turn-In-Line dates to the Weld County Office of Emergency Management for coordination/communication with local first responders. These start dates will be provided a

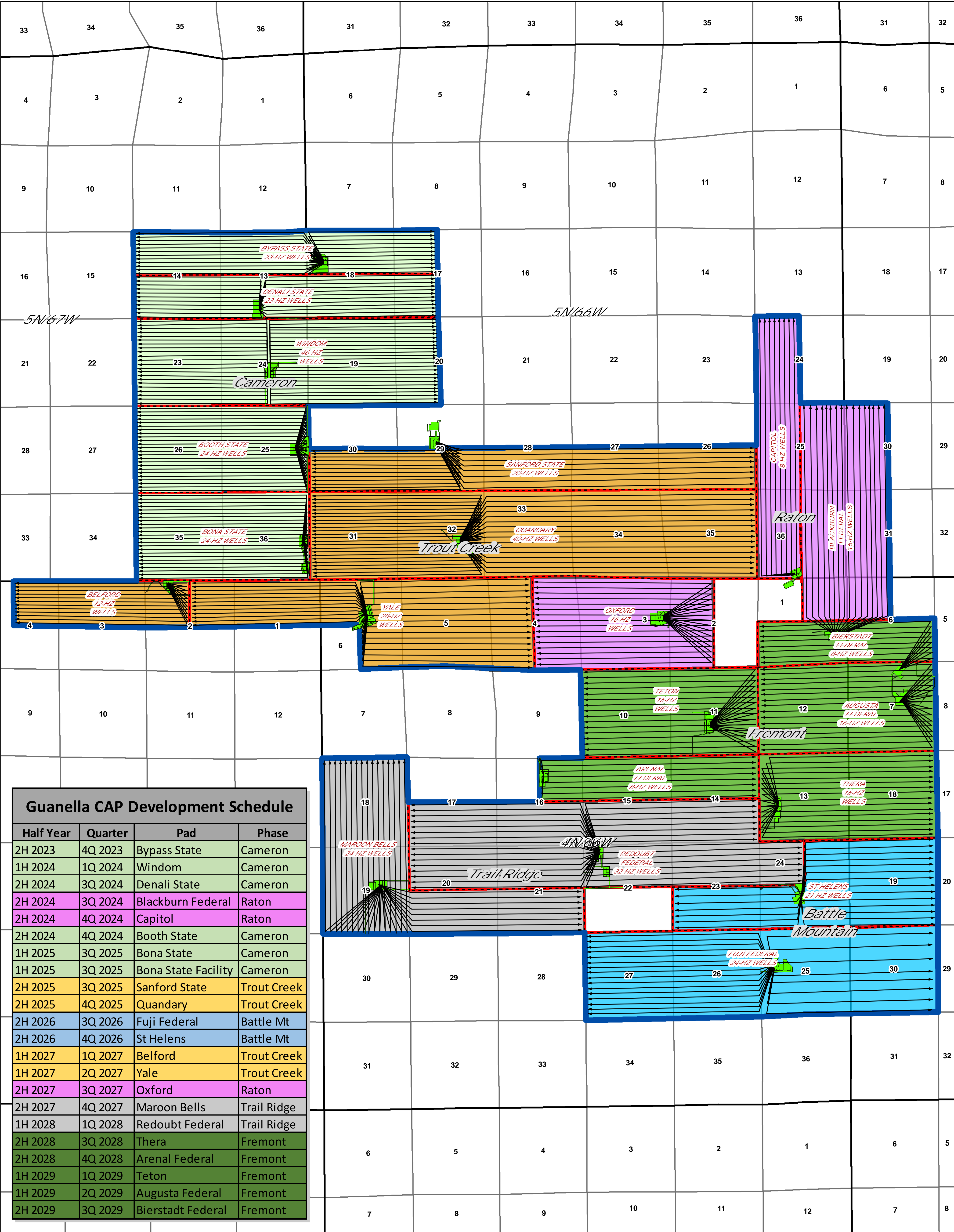
minimum of 7 business days prior to commencement or change in oil and gas development operations.

- b. In the event of an emergency requiring First Responders, Unified Command will be established between the PDC appointed company contact on location and First Responders present. Unified Command post will be established based on conditions present at time of incident.
- c. PDC EHS representative and first responders identified in this Emergency Action Plan (and site-specific TRPs for each CAP Location) have reviewed both documents and have discussed coordination efforts in the event of an emergency situation requiring first responder assistance.
- d. Industry Mutual-Aid: Energy companies operating in Weld County are encouraged to be members of the Colorado Preparedness Response Network (CPRN), to support mutual-aid collaboration between industry and public emergency response organizations to achieve a coordinated and effective response to an all-hazards event.

10 PLAN REVIEW AND UPDATE PROCEDURES


- a. **Multi-year plan review and update:** After development operations are complete and the wells are in production. The Guanella CAP Locations will fall under PDC's Basin Wide Emergency Response Plan. This plan is reviewed annually and updated accordingly.
- b. **Post-incident plan review and update:** Any reportable or recordable incident that occurs within this area will be recorded with PDC's internal incident reporting system. These incidents will be reviewed by PDC management to identify areas of improvement or updates.

FIGURES



Guanella CAP Development Schedule			
Half Year	Quarter	Pad	Phase
2H 2023	4Q 2023	Bypass State	Cameron
1H 2024	1Q 2024	Windom	Cameron
2H 2024	3Q 2024	Denali State	Cameron
2H 2024	3Q 2024	Blackburn Federal	Raton
2H 2024	4Q 2024	Capitol	Raton
2H 2024	4Q 2024	Booth State	Cameron
1H 2025	3Q 2025	Bona State	Cameron
1H 2025	3Q 2025	Bona State Facility	Cameron
2H 2025	3Q 2025	Sanford State	Trout Creek
2H 2025	4Q 2025	Quandary	Trout Creek
2H 2026	3Q 2026	Fuji Federal	Battle Mt
2H 2026	4Q 2026	St Helens	Battle Mt
1H 2027	1Q 2027	Belford	Trout Creek
1H 2027	2Q 2027	Yale	Trout Creek
2H 2027	3Q 2027	Oxford	Raton
2H 2027	4Q 2027	Maroon Bells	Trail Ridge
1H 2028	1Q 2028	Redoubt Federal	Trail Ridge
2H 2028	3Q 2028	Thera	Fremont
2H 2028	4Q 2028	Arenal Federal	Fremont
1H 2029	1Q 2029	Teton	Fremont
1H 2029	2Q 2029	Augusta Federal	Fremont
2H 2029	3Q 2029	Bierstadt Federal	Fremont

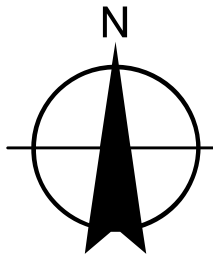
0 0.25 0.5 1 1.5 2 Miles



PDC ENERGY

EXHIBIT:
Development Schedule
Weld County, Colorado

Date: 6/23/2022



Coordinate System: NAD 1983 UTM Zone 13N
Projection: Transverse Mercator
Datum: North American 1983
False Easting: 500,000.0000
False Northing: 5,000.0000
Central Meridian: -105.0000
Scale Factor: 0.9996
Datum Origin: 0.0000
Units: Meter

Disclaimer:
PDC Energy, Inc. makes no representation or warranty regarding the accuracy or completeness of this map, which is being provided as a courtesy only. PDC Energy, Inc. expressly disclaims all liability and responsibility for any representation, warranty, statement or opinion in this map, whether express, statutory or implied, as to the content, character or nature of any information contained in this map, including, but not limited to, the leasehold acreage positions, well locations and statuses or any other information depicted. Any conclusions derived from this map are at the sole cost, risk and expense of the user.
© 2022 PDC Energy, Inc. All Rights Reserved.

Author: CCagle

Doc: Exhibit N-MAP_Development Schedule_V2.mxd

FIGURE 1

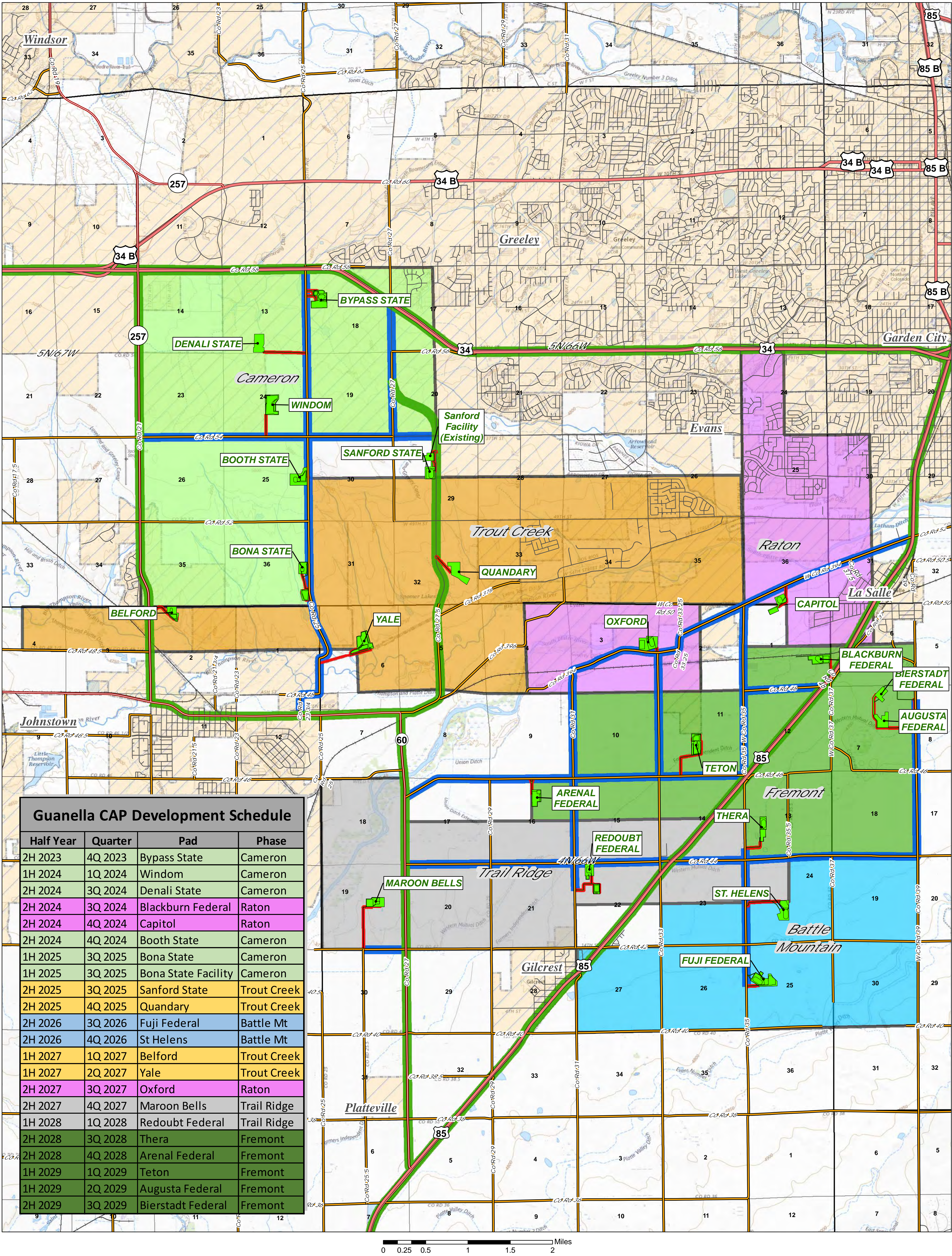
Legend

- Guanella CAP Boundary
- Planned Pad
- Planned HZ wells

Developmet Phases

- Battle Mountain
- Cameron
- Fremont
- Raton
- Trail Ridge
- Trout Creek





Guanella CAP Development Schedule			
Half Year	Quarter	Pad	Phase
2H 2023	4Q 2023	Bypass State	Cameron
1H 2024	1Q 2024	Windom	Cameron
2H 2024	3Q 2024	Denali State	Cameron
2H 2024	3Q 2024	Blackburn Federal	Raton
2H 2024	4Q 2024	Capitol	Raton
2H 2024	4Q 2024	Booth State	Cameron
1H 2025	3Q 2025	Bona State	Cameron
1H 2025	3Q 2025	Bona State Facility	Cameron
2H 2025	3Q 2025	Sanford State	Trout Creek
2H 2025	4Q 2025	Quandary	Trout Creek
2H 2026	3Q 2026	Fuji Federal	Battle Mt
2H 2026	4Q 2026	St Helens	Battle Mt
1H 2027	1Q 2027	Belford	Trout Creek
1H 2027	2Q 2027	Yale	Trout Creek
2H 2027	3Q 2027	Oxford	Raton
2H 2027	4Q 2027	Maroon Bells	Trail Ridge
1H 2028	1Q 2028	Redoubt Federal	Trail Ridge
2H 2028	3Q 2028	Thera	Fremont
2H 2028	4Q 2028	Arenal Federal	Fremont
1H 2029	1Q 2029	Teton	Fremont
1H 2029	2Q 2029	Augusta Federal	Fremont
2H 2029	3Q 2029	Bierstadt Federal	Fremont

FIGURE 2

Legend

- City Boundary

County

Other

Interstate

State Hwy

US Hwy

Railroad

Planned Pad
- Developmet Phases

Battle Mountain

Cameron

Fremont

Raton

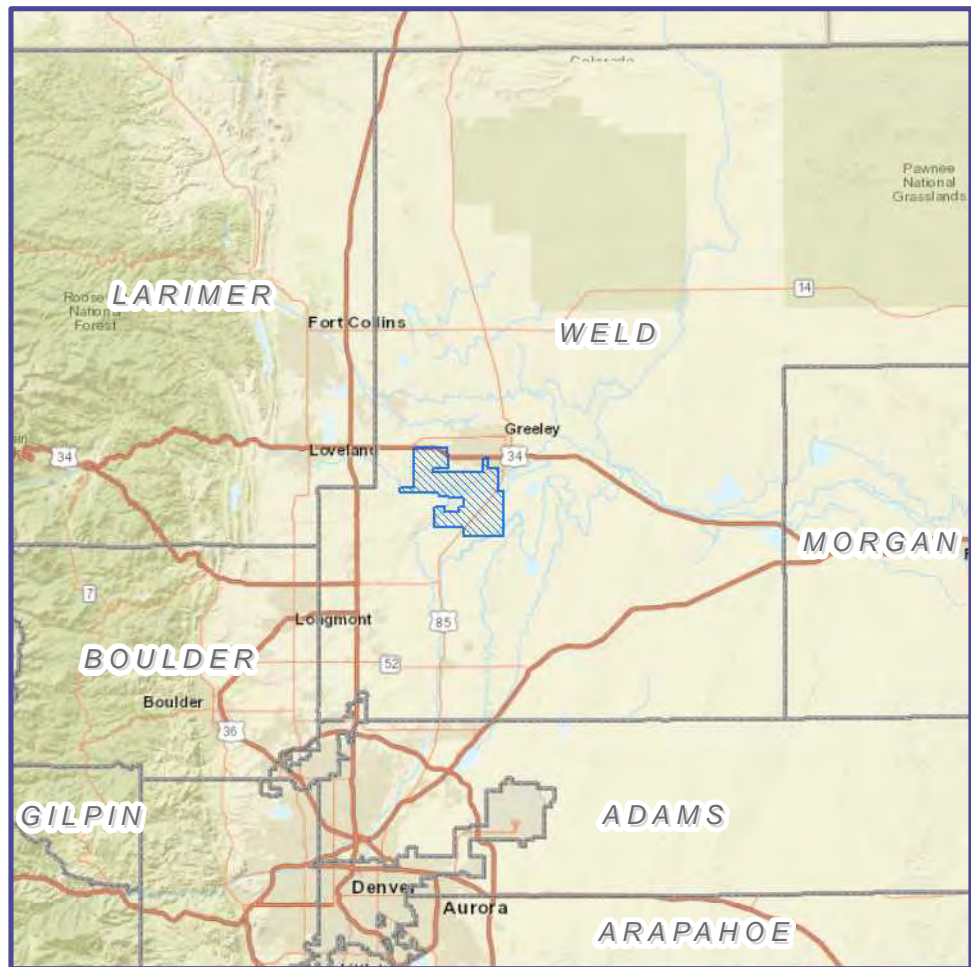
Trail Ridge

Trout Creek
- CAP Roads

Proposed Pad Access Road

Highways/Main Roads

Paved County Roads/Local Roads

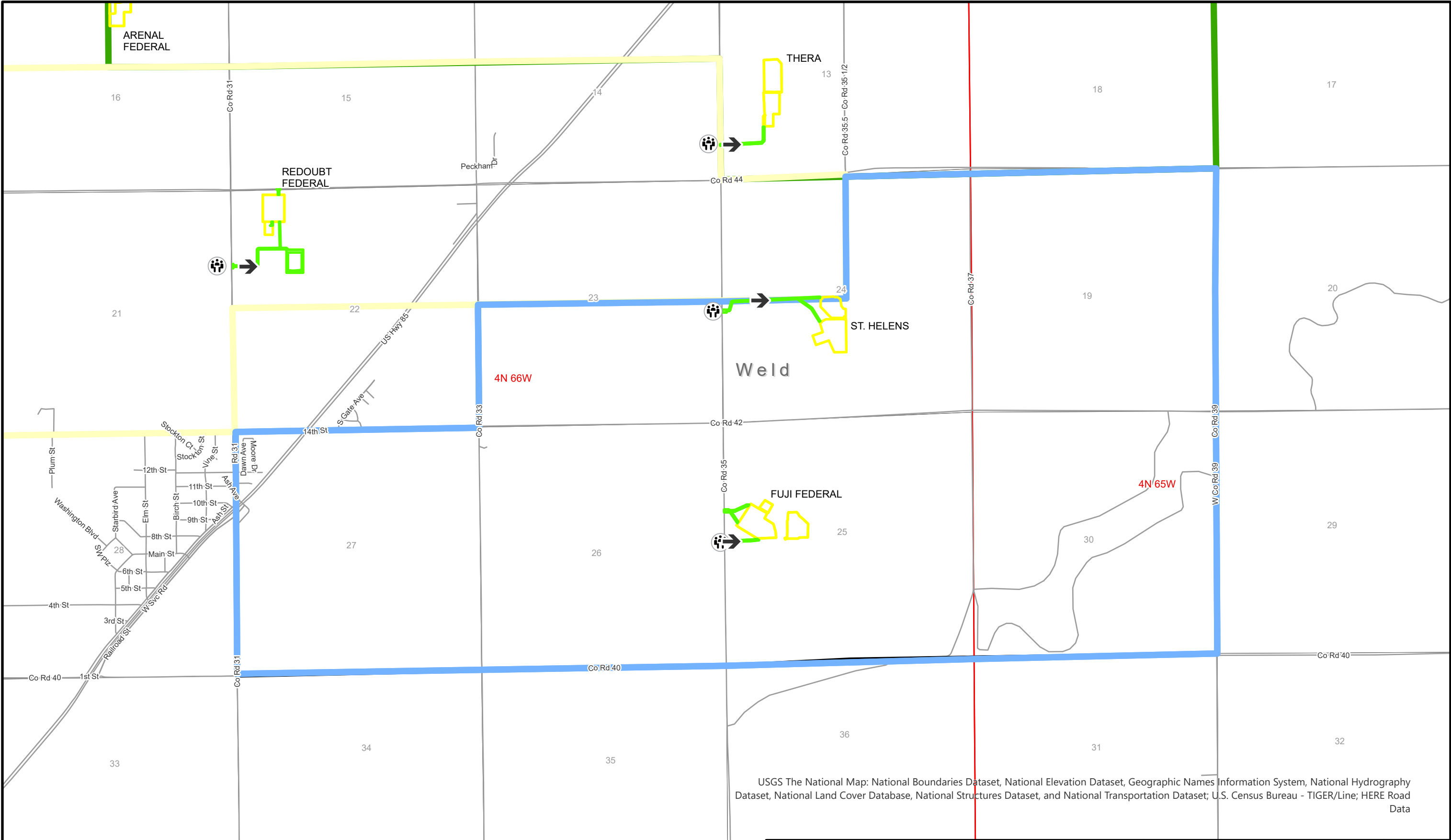


Disclaimer:
PDC Energy, Inc. makes no representation or warranty regarding the accuracy or completeness of this map, which is being provided as a courtesy only. PDC Energy, Inc. expressly disclaims all liability and responsibility for any representation, warranty, statement or depiction in this map, whether express, statutory or implied, as to the content, character or nature of any information contained in this map, including, but not limited to, the leasehold acreage positions, well locations and statuses or any other information depicted. Any conclusions derived from this map are at the sole cost, risk and expense of the user.
© 2022 PDC Energy, Inc. All Rights Reserved.

Author: CCagle

Doc: Exhibit B-MAP_Publi-Maintained-Roads-Haul-Routes-Access-Roads_V2.mxd

Date: 6/24/2022 User: ALeonard Path: \\azgisstorp01\GIS_Projects\Client\PDC\Form2B_Calculations\PDC_Form2B_Figures.aprx



USGS The National Map: National Boundaries Dataset, National Elevation Dataset, Geographic Names Information System, National Hydrography Dataset, National Land Cover Database, National Structures Dataset, and National Transportation Dataset; U.S. Census Bureau - TIGER/Line; HERE Road Data

LEGEND

Primary Ingress/Egress

Primary Muster Point

Guanella CAP Project Boundary

Access Road

Working Pad Surface

Section

Township/Range

County Boundary

Developmental Phases

Battle Mountain

Cameron

Fremont

Raton

Trail Ridge

Trout Creek

Roads

0 1,000 2,000 4,000 Feet

PDC ENERGY

KLEINFELDER
Bright People. Right Solutions.

PROJECT NO. 20213616

CREATED: 6/24/2022

CREATED BY: ALeonard

CHECKED BY: ADaniel

FILE NAME: Fig3_CAP_Muster

Project Location Access Map and Muster Points

Battle Mountain Phase

Guanella CAP
Weld County, Colorado

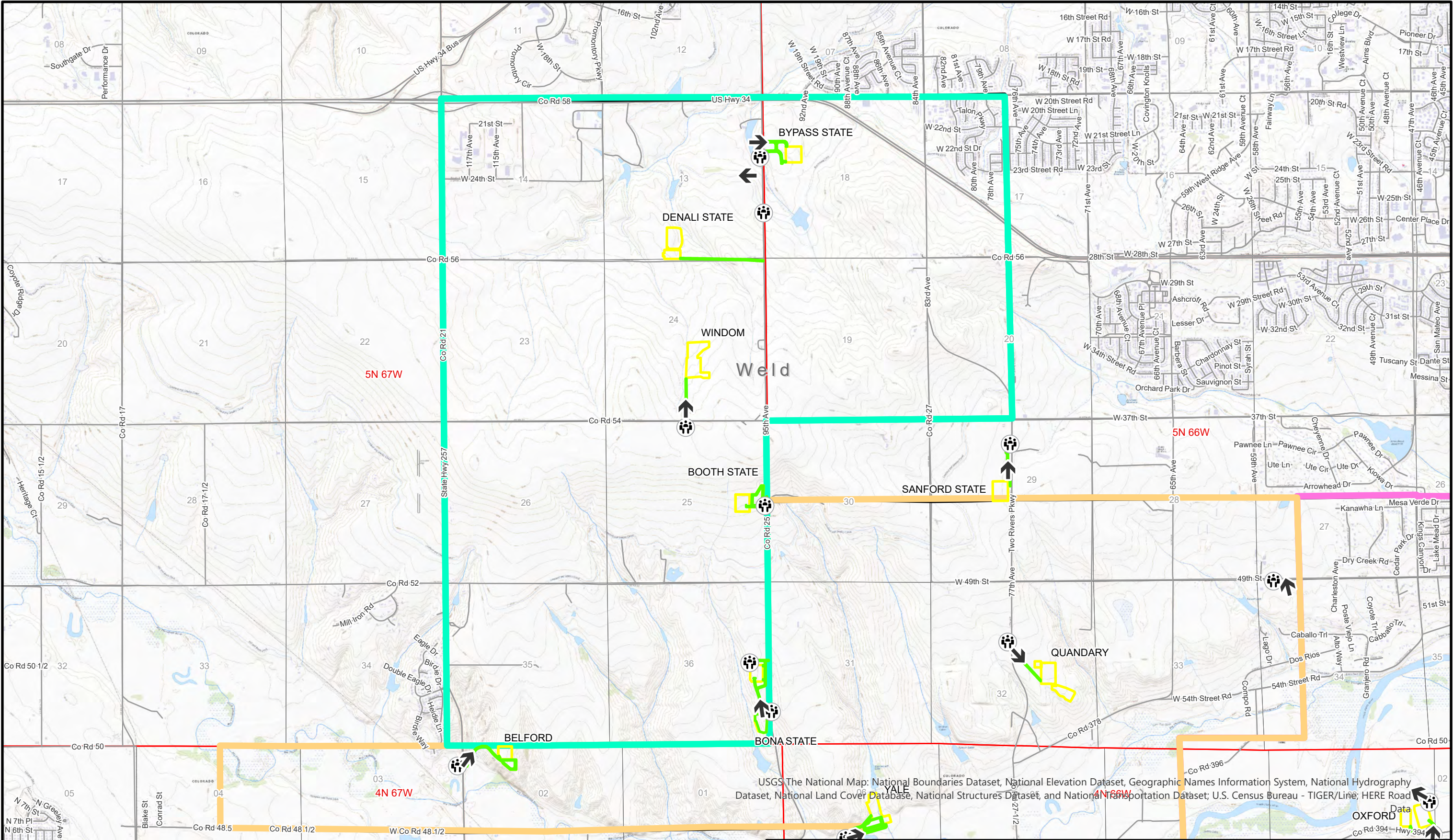
FIGURE

3

Page 1 of 6

The information included on this graphic representation has been compiled from a variety of sources and is subject to change without notice. Kleinfelder makes no representations or warranties, express or implied, as to accuracy, completeness, timeliness, or rights to the use of such information. This document is not intended for use as a land survey product nor is it designed or intended as a construction design document. The use or misuse of the information contained on this graphic representation is at the sole risk of the party using or misusing the information.

Date: 6/24/2022 User: ALeonard Path: \\azgisstorp01\GIS_Projects\Client\PDC\Form2B_Calculations\PDC_Form2B_Figures.aprx



LEGEND

Primary Ingress/Egress

Primary Muster Point

Guanella CAP Project Boundary

Access Road

Working Pad Surface

Section

Township/Range

County Boundary

Developmental Phases

Battle Mountain

Cameron

Fremont

Raton

Trail Ridge

Trout Creek

Roads

0 1,500 3,000 6,000 Feet

The information included on this graphic representation has been compiled from a variety of sources and is subject to change without notice. Kleinfelder makes no representations or warranties, express or implied, as to accuracy, completeness, timeliness, or rights to the use of such information. This document is not intended for use as a land survey product nor is it designed or intended as a construction design document. The use or misuse of the information contained on this graphic representation is at the sole risk of the party using or misusing the information.

PROJECT NO.	20213616
CREATED:	6/24/2022
CREATED BY:	ALeonard
CHECKED BY:	ADaniel
FILE NAME:	Fig3_CAP_Muster

Project Location Access Map and Muster Points
Cameron Phase

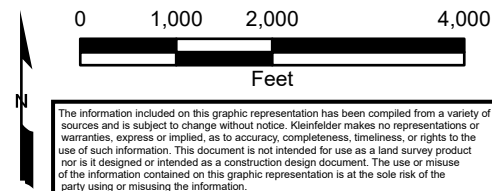
Guanella CAP
Weld County, Colorado

FIGURE
3

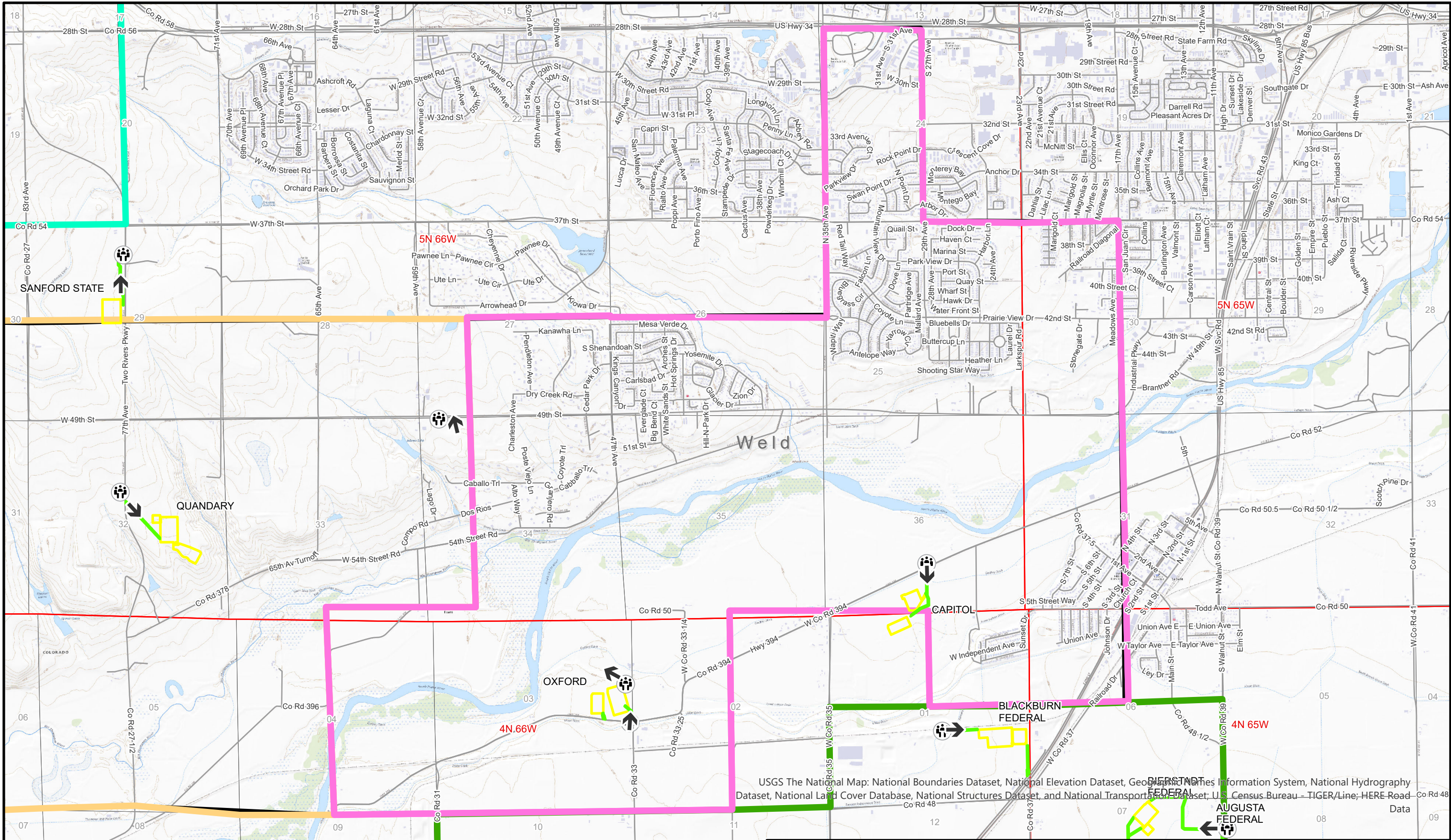
Page 2 of 6

Developmental Phases

- Battle Mountain
- Cameron
- Fremont
- Raton



PROJECT NO.	20213616	Project Location Access Map and Muster Points Fremont Phase	FIGURE 3
CREATED:	6/24/2022		
CREATED BY:	ALeonard	Guanella CAP Weld County, Colorado	Page 3 of 6
CHECKED BY:	ADaniel		
FILE NAME:	Fig3_CAP_Muster		



USGS The National Map: National Boundaries Dataset, National Elevation Dataset, Geographic Names Information System, National Hydrography Dataset, National Land Cover Database, National Structures Dataset, and National Transportation Dataset; U.S. Census Bureau – TIGER/Line; HERE Road Data

LEGEND

Primary Ingress/Egress

Primary Muster Point

Guanella CAP Project Boundary

Access Road

Working Pad Surface

Section

Township/Range

County Boundary

Developmental Phases

Battle Mountain

Cameron

Fremont

Raton

Trail Ridge

Trout Creek

Roads

01,2502,5005,000
Feet

The information included on this graphic representation has been compiled from a variety of sources and is subject to change without notice. Kleinfelder makes no representations or warranties, express or implied, as to accuracy, completeness, timeliness, or rights to the use of such information. This document is not intended for use as a land survey product nor is it designed or intended as a construction design document. The use or misuse of the information contained on this graphic representation is at the sole risk of the party using or misusing the information.

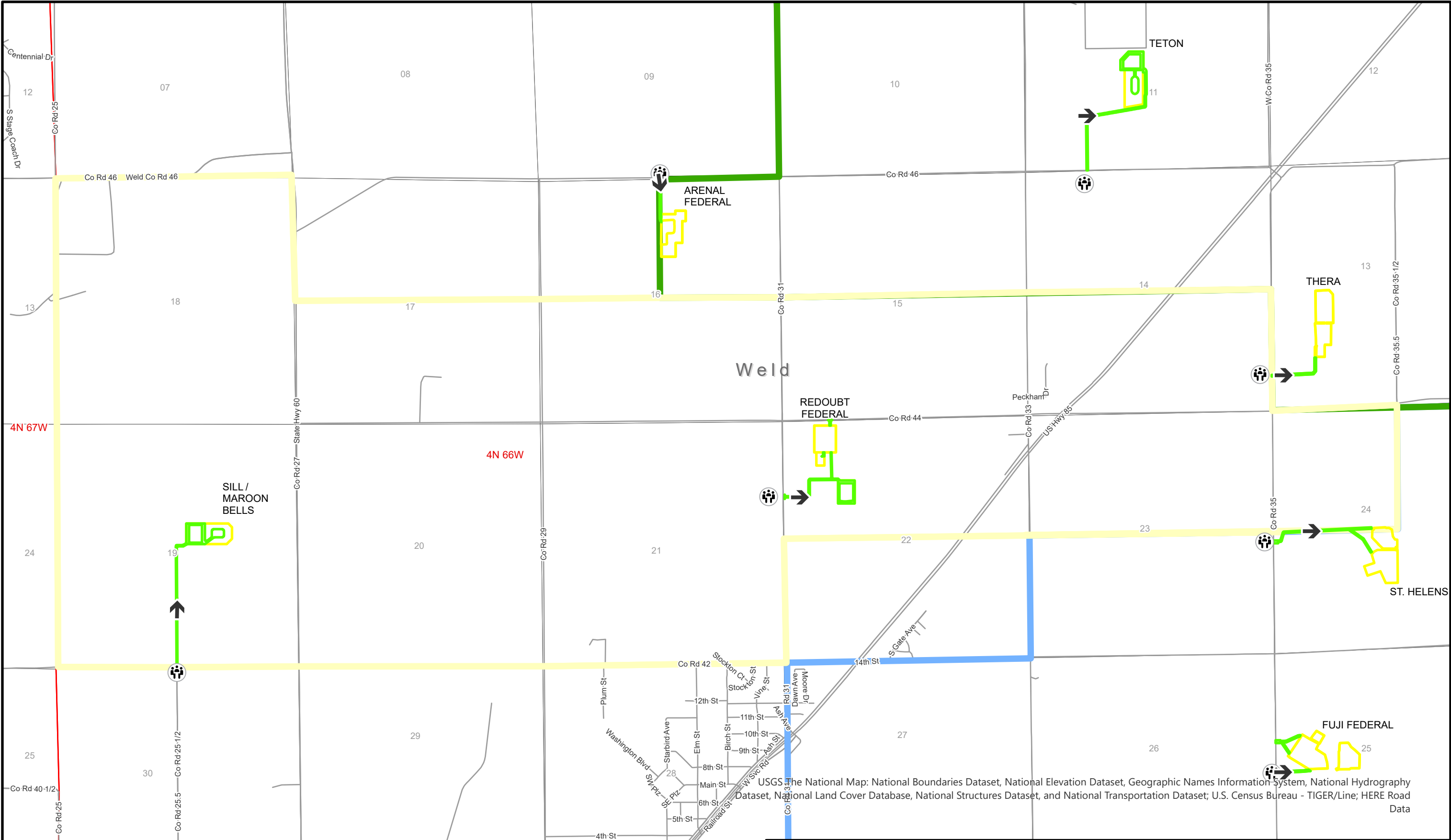
PROJECT NO.	20213616
CREATED:	9/14/2022
CREATED BY:	ALeonard
CHECKED BY:	ADaniel
FILE NAME:	Fig3_CAP_Muster

Project Location Access Map and Muster Points
Raton Phase

Guanella CAP
Weld County, Colorado

FIGURE
3
Page 4 of 6

Date: 6/24/2022 User: ALeonard Path: \\azgrjsstorp01\GIS_Projects\Client\PDC\Calculations\PDC_Form2B_Figures.aprx



USGS The National Map: National Boundaries Dataset, National Elevation Dataset, Geographic Names Information System, National Hydrography Dataset, National Land Cover Database, National Structures Dataset, and National Transportation Dataset; U.S. Census Bureau - TIGER/Line; HERE Road Data

LEGEND

Primary Ingress/Egress

Primary Muster Point

Guanella CAP Project Boundary

Access Road

Working Pad Surface

Section

Township/Range

County Boundary

Developmental Phases

Battle Mountain

Cameron

Fremont

Raton

Trail Ridge

Trout Creek

Roads

The information included on this graphic representation has been compiled from a variety of sources and is subject to change without notice. Kleinfelder makes no representations or warranties, express or implied, as to accuracy, completeness, timeliness, or rights to the use of such information. This document is not intended for use as a land survey product nor is it designed or intended as a construction design document. The use or misuse of the information contained on this graphic representation is at the sole risk of the party using or misusing the information.

PROJECT NO.	20213616
CREATED:	6/24/2022
CREATED BY:	ALeonard
CHECKED BY:	ADaniel
FILE NAME:	Fig3_CAP_Muster

Project Location Access Map and Muster Points Trail Ridge Phase

Guanella CAP
Weld County, Colorado

FIGURE

3

Page 5 of 6

0 1,500 3,000 6,000

Feet

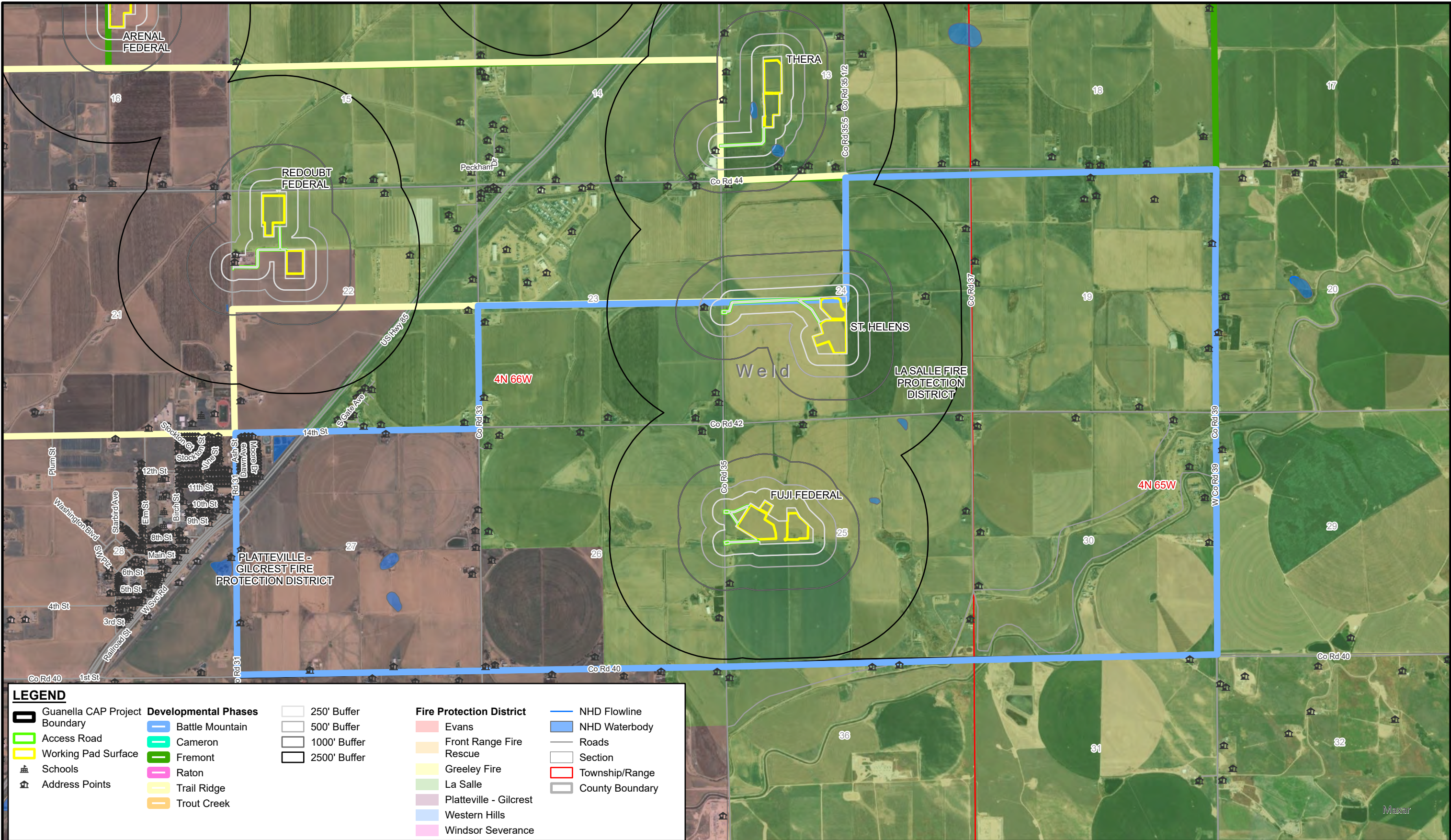
The information included on this graphic representation has been compiled from a variety of sources and is subject to change without notice. Kleinfelder makes no representations or warranties, express or implied, as to accuracy, completeness, timeliness, or rights to the use of such information. This document is not intended for use as a land survey product, nor is it designed or intended as a construction design document. The use or misuse of the information contained on this graphic representation is at the sole risk of the party using or misusing the information.



FIGURE

3

Page 6 of 6



LEGEND

Guanella CAP Project Boundary

Access Road

Working Pad Surface

Schools

Address Points

Developmental Phases

Battle Mountain

Cameron

Fremont

Raton

Trail Ridge

Trout Creek

250' Buffer

500' Buffer

1000' Buffer

2500' Buffer

Fire Protection District

Evans

Front Range Fire Rescue

Greeley Fire

La Salle

Platteville - Gilcrest

Western Hills

Windsor Severance

NHD Flowline

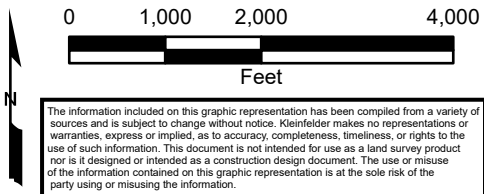
NHD Waterbody

Roads

Section

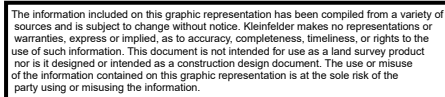
Township/Range

County Boundary

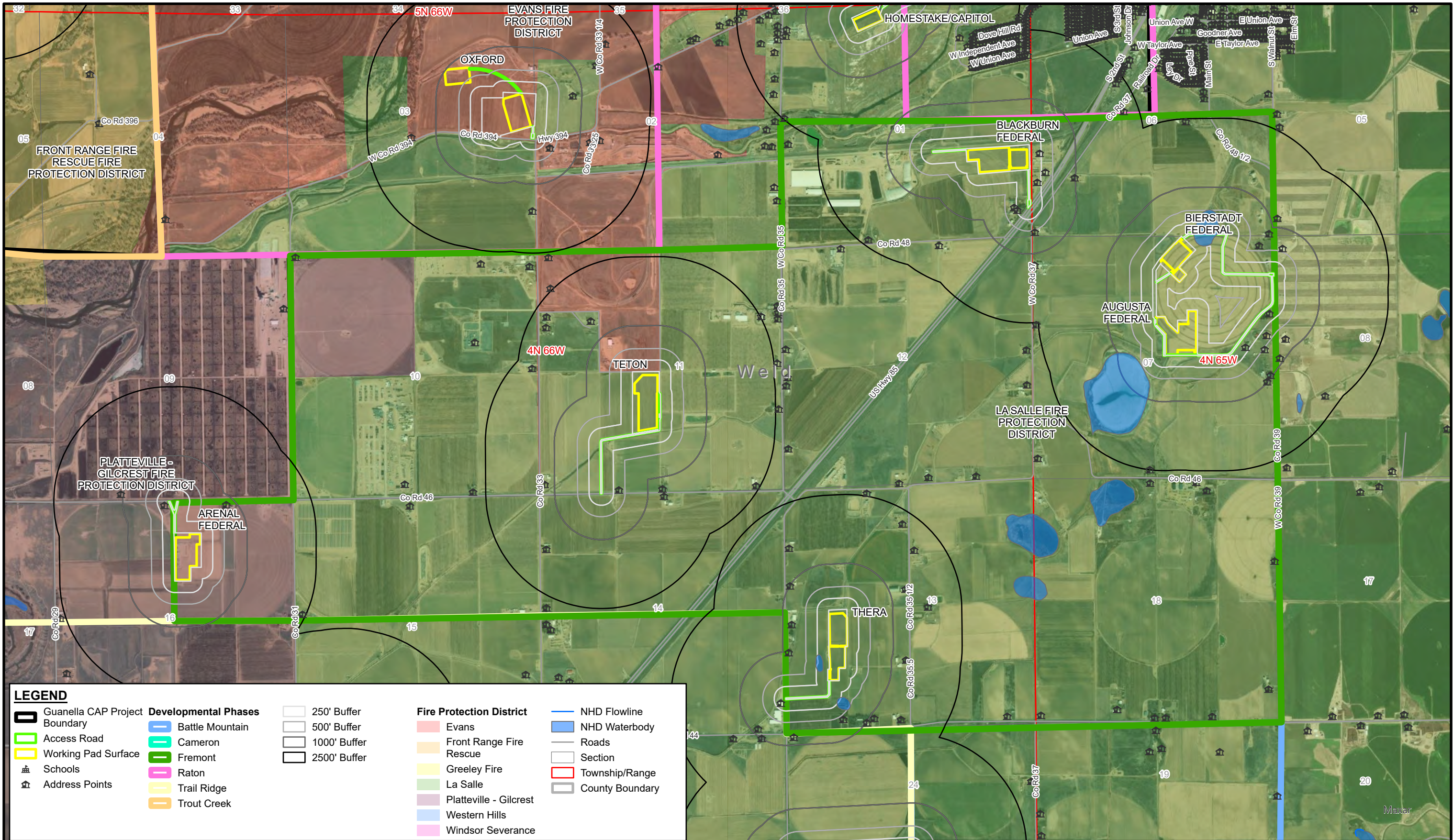


PROJECT NO.	20213616
CREATED:	6/24/2022
CREATED BY:	ALeonard
CHECKED BY:	ADaniel
FILE NAME:	Fig4_Receptors

Sensitive Receptors Battle Mountain Phase	FIGURE 4 Page 1 of 6
Guanella CAP Weld County, Colorado	



PROJECT NO.	202136116	Sensitive Receptors Cameron Phase	FIGURE 4
CREATED:	6/24/2022		
CREATED BY:	ALeonard		
CHECKED BY:	ADaniel	Guanella CAP Weld County, Colorado	
FILE NAME:	Fig4_Receptors		



LEGEND

Guanella CAP Project Boundary

Access Road

Working Pad Surface

Schools

Address Points

Developmental Phases

Battle Mountain

Cameron

Fremont

Raton

Trail Ridge

Trout Creek

250' Buffer

500' Buffer

1000' Buffer

2500' Buffer

Fire Protection District

Evans

Front Range Fire Rescue

Greeley Fire

La Salle

Platteville - Gilcrest

Western Hills

Windsor Severance

NHD Flowline

NHD Waterbody

Roads

Section

Township/Range

County Boundary

0100020004000

Feet

The information included on this graphic representation has been compiled from a variety of sources and is subject to change without notice. Kleinfelder makes no representations or warranties, express or implied, as to accuracy, completeness, timeliness, or rights to the use of such information. This document is not intended for use as a land survey product nor is it designed or intended as a construction design document. The use or misuse of the information contained on this graphic representation is at the sole risk of the party using or misusing the information.

PROJECT NO.20213616

CREATED:6/24/2022

CREATED BY:ALeonard

CHECKED BY:ADaniel

FILE NAME:Fig4_Receptors

Sensitive Receptors

Fremont Phase

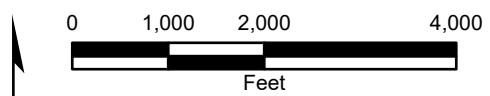
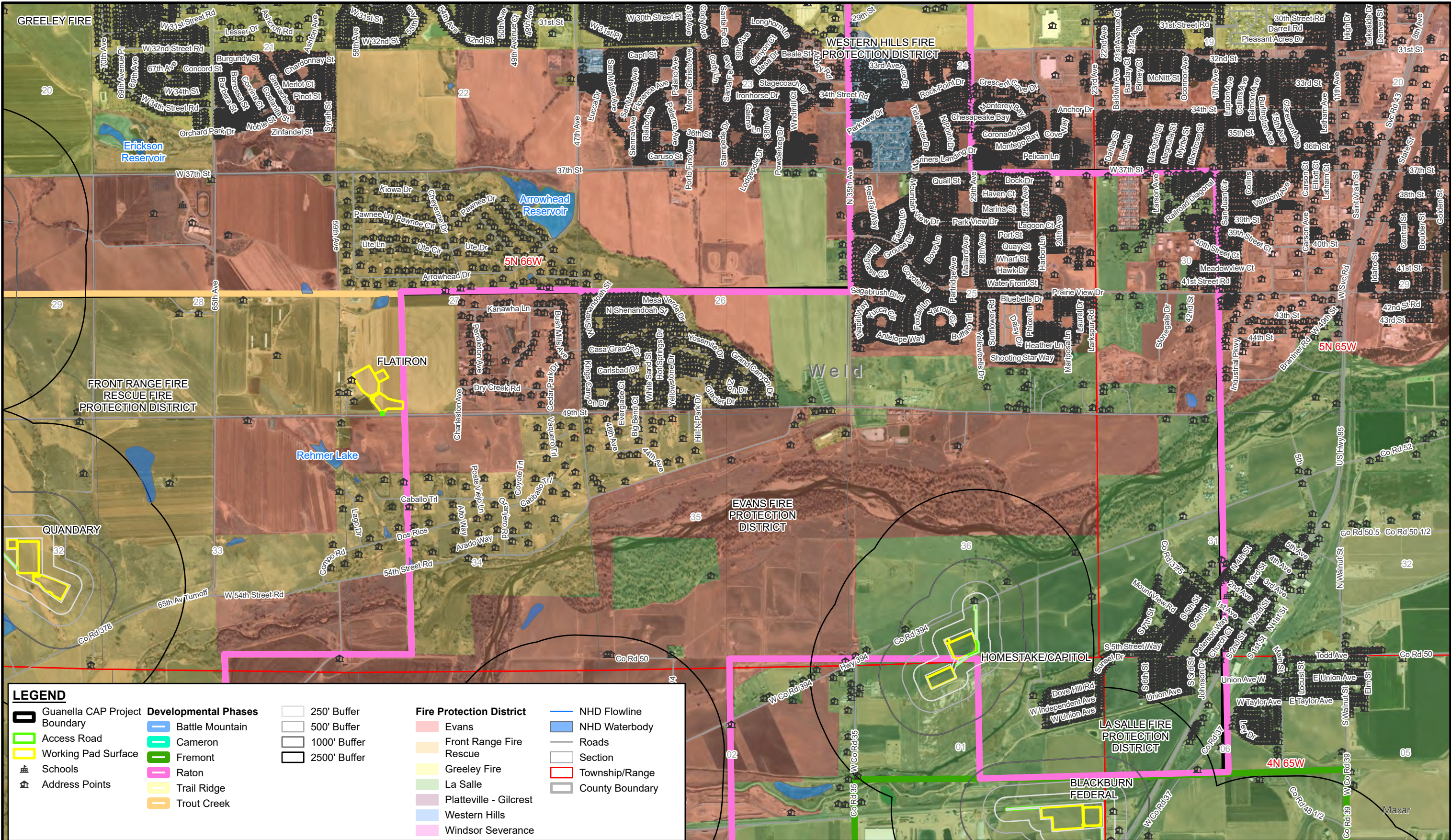
Guanella CAP
Weld County, Colorado

FIGURE

4

Page 3 of 6

Date: 6/24/2022 User: ALeonard Path: \\azgjsstorp01\GIS_Projects\Client\PDC\PDC_Form2B_Figures.aprx

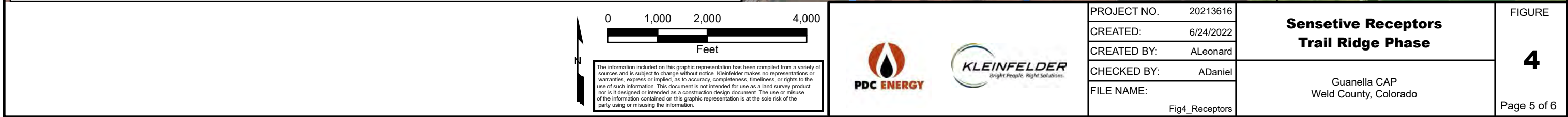


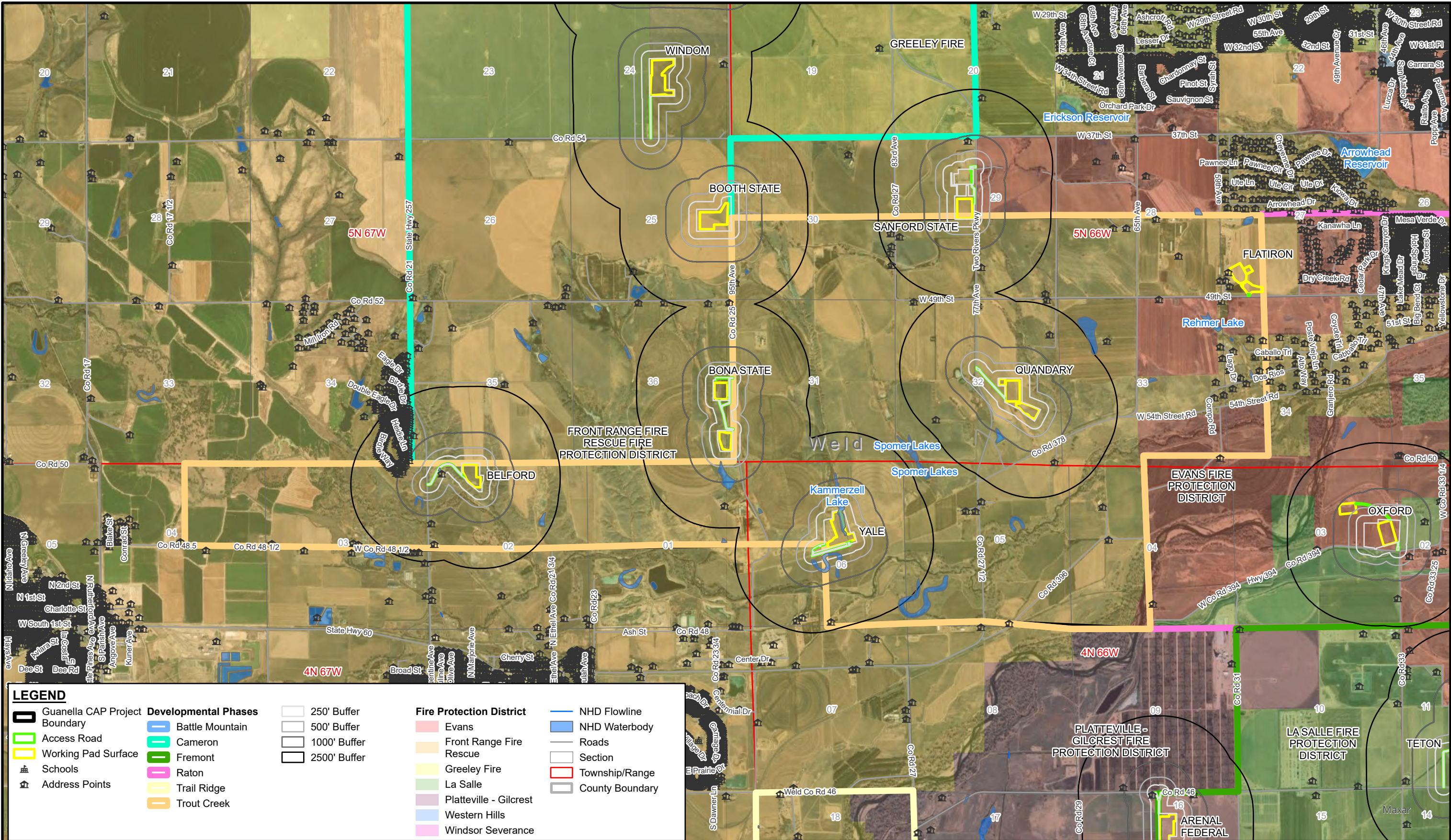
The information included on this graphic representation has been compiled from a variety of sources and is subject to change without notice. Kleinfelder makes no representations or warranties, express or implied, as to accuracy, completeness, timeliness, or rights to the use of such information. This document is not intended for use as a land survey product nor is it designed or intended as a construction design document. The use or misuse of the information contained on this graphic representation is at the sole risk of the party using or misusing the information.



PROJECT NO.	20213616
CREATED:	6/24/2022
CREATED BY:	ALeonard
CHECKED BY:	ADaniel
FILE NAME:	Fig4_Receptors

Sensitive Receptors Raton Phase	FIGURE 4
Guanella CAP Weld County, Colorado	Page 4 of 6





The information included on this graphic representation has been compiled from a variety of sources and is subject to change without notice. Kleinfelder makes no representations or warranties, express or implied, as to accuracy, completeness, timeliness, or rights to the use of such information. This document is not intended for use as a land survey product nor is it designed or intended as a construction design document. The use or misuse of the information contained on this graphic representation is at the sole risk of the party using or misusing the information.



PROJECT NO.	20213616
CREATED:	6/24/2022
CREATED BY:	ALeonard
CHECKED BY:	ADaniel
FILE NAME:	Fig4_Receptors

**Sensitive Receptors
Trout Creek Phase**

Guanella CAP
Weld County, Colorado

FIGURE

4