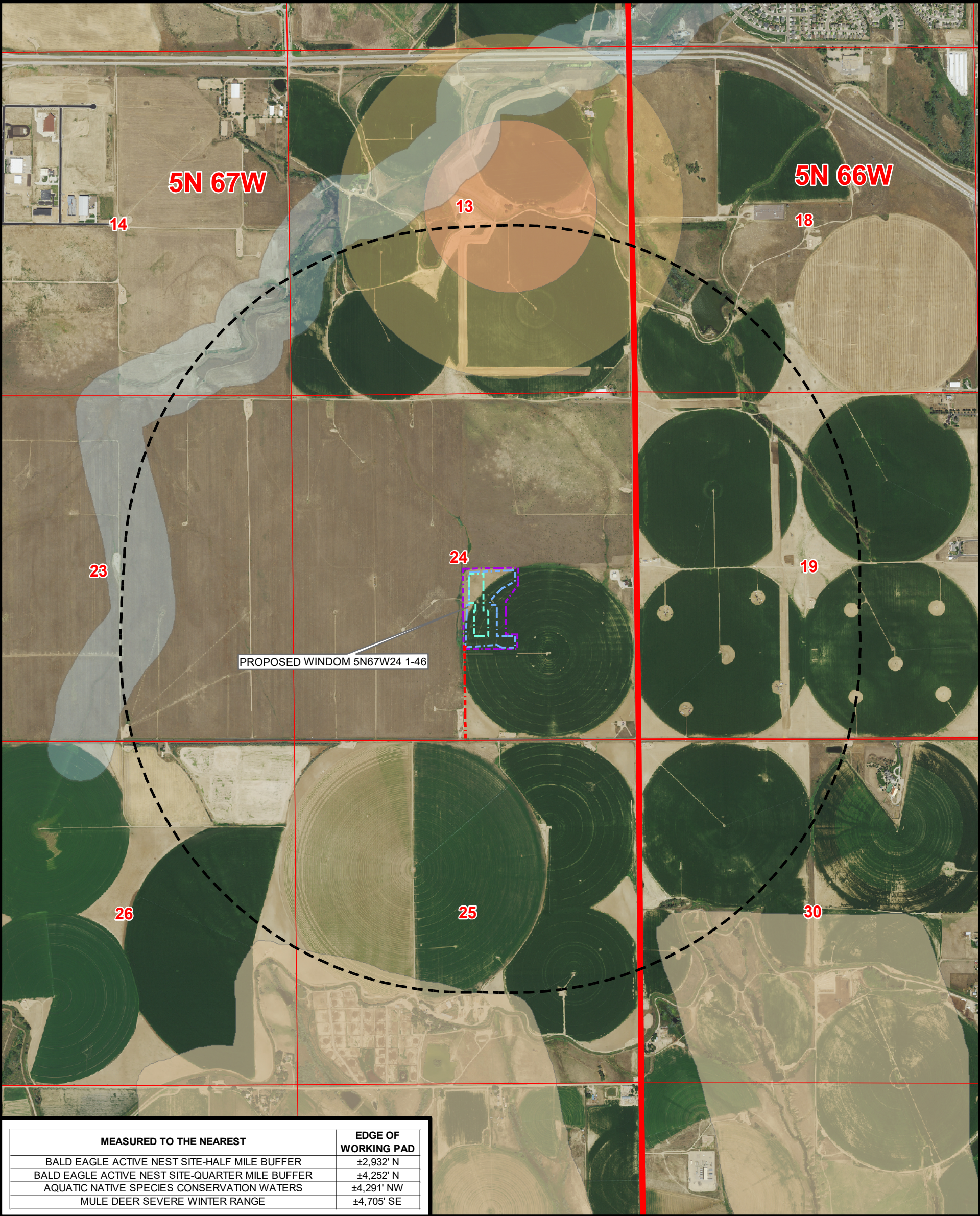


WILDLIFE HABITAT DRAWING  
WINDOM 5N67W24 1-46

SECTION 24, TOWNSHIP 5 NORTH, RANGE 67 WEST, 6TH P.M., WELD COUNTY, COLORADO



MEASURED TO THE NEAREST	EDGE OF WORKING PAD
BALD EAGLE ACTIVE NEST SITE-HALF MILE BUFFER	±2,932' N
BALD EAGLE ACTIVE NEST SITE-QUARTER MILE BUFFER	±4,252' N
AQUATIC NATIVE SPECIES CONSERVATION WATERS	±4,291' NW
MULE DEER SEVERE WINTER RANGE	±4,705' SE


Legend

- PROPOSED ACCESS ROAD
- PROPOSED WORKING PAD SURFACE
- PROPOSED FLOWLINE CORRIDOR
- PROPOSED OIL AND GAS LOCATION
- ONE MILE BUFFER - WORKING PAD SURFACE

- SENSITIVE WILDLIFE HABITAT (SOURCE COGCC)
- BALD EAGLE ACTIVE NEST SITE - HALF MILE BUFFER
- HIGH PRIORITY HABITAT (RULE 1202)
- BALD EAGLE ACTIVE NEST SITE - QUARTER MILE BUFFER
  - AQUATIC NATIVE SPECIES CONSERVATION WATERS
  - MULE DEER SEVERE WINTER RANGE

NOTE:  
1. THIS MAP IS A COMPILATION OF PUBLICLY AVAILABLE DATA.  
THE ACCURACY AND COMPLETENESS OF SAID DATA HAS  
NOT BEEN VERIFIED BY 609 CONSULTING, LLC. EXISTING  
CONDITIONS MAY DIFFER FROM WHAT IS SHOWN.

COGCC  
GIS ONLINE: [https://cogccmap.state.co.us/cogcc\\_gis\\_online/](https://cogccmap.state.co.us/cogcc_gis_online/)



**PDC  
ENERGY**  
4000 Burlington Avenue  
Evans, Colorado 80620




**609  
Consulting, LLC**

**LOVELAND OFFICE**  
6706 North Franklin Avenue  
Loveland, Colorado 80538  
Phone 970-776-4331

**SHERIDAN OFFICE**  
1095 Saberton Avenue  
Sheridan, Wyoming 82801  
Phone 307-674-0609

Drawn by: BB  
Revised: RJ

Date: 5 Nov 2021  
Date: 20 Jan 2023



N

NAD83 CO-Nft  
1" = 1,500ft

