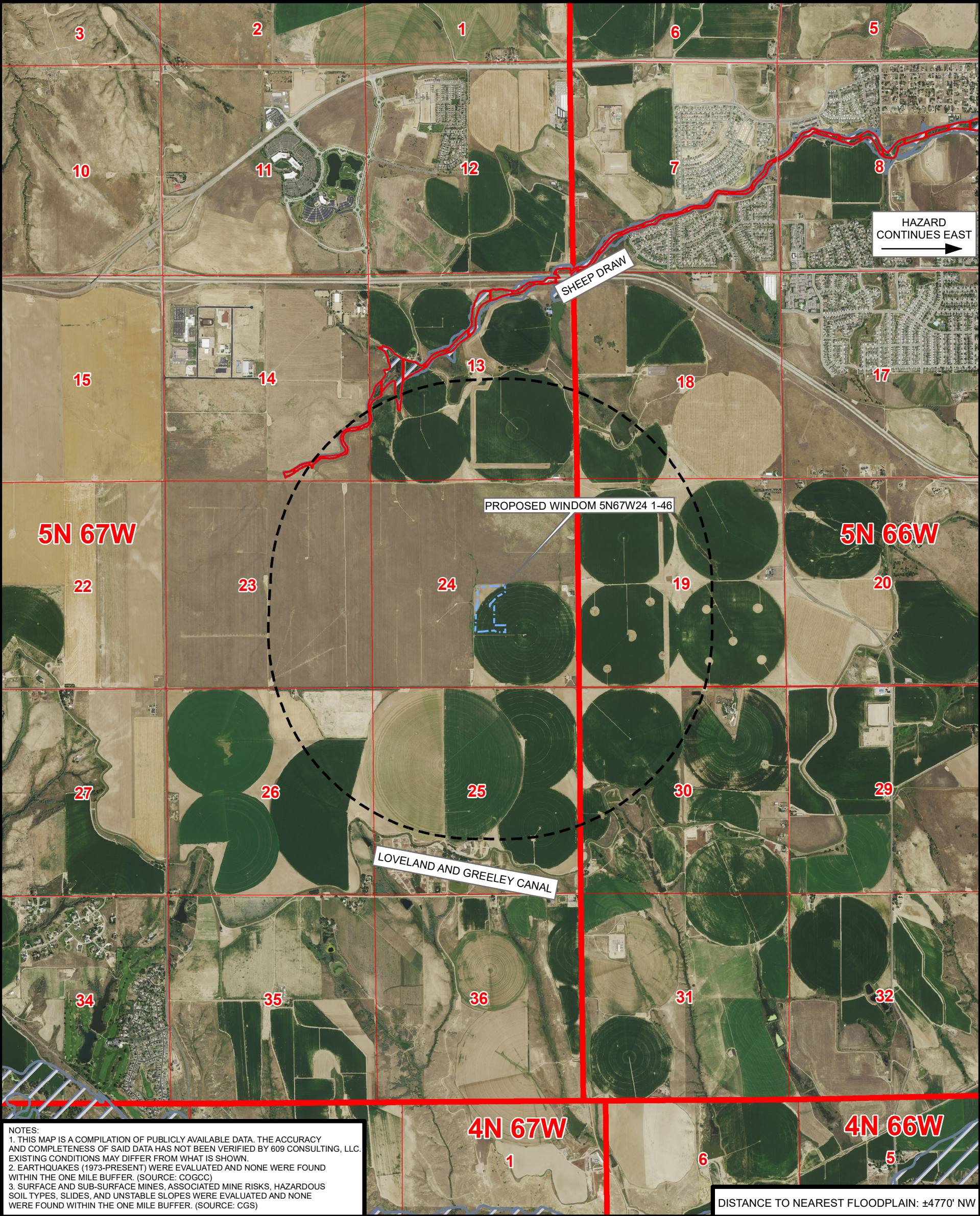


GEOLOGIC HAZARD MAP
WINDOM 5N67W24 1-46

SECTION 24, TOWNSHIP 5 NORTH, RANGE 67 WEST, 6TH P.M., WELD COUNTY, COLORADO



NOTES:
1. THIS MAP IS A COMPILATION OF PUBLICLY AVAILABLE DATA. THE ACCURACY AND COMPLETENESS OF SAID DATA HAS NOT BEEN VERIFIED BY 609 CONSULTING, LLC. EXISTING CONDITIONS MAY DIFFER FROM WHAT IS SHOWN.
2. EARTHQUAKES (1973-PRESENT) WERE EVALUATED AND NONE WERE FOUND WITHIN THE ONE MILE BUFFER. (SOURCE: COGCC)
3. SURFACE AND SUB-SURFACE MINES, ASSOCIATED MINE RISKS, HAZARDOUS SOIL TYPES, SLIDES, AND UNSTABLE SLOPES WERE EVALUATED AND NONE WERE FOUND WITHIN THE ONE MILE BUFFER. (SOURCE: CGS)

Legend

- PROPOSED WORKING PAD SURFACE
- ONE MILE BUFFER - WORKING PAD SURFACE
- 100-YEAR FLOODPLAIN (PRELIMINARY, 2020) (SOURCE: FEMA)
- 100-YEAR FLOODWAY (PRELIMINARY, 2020) (SOURCE: FEMA)
- RADIOACTIVITY (SOURCE: CGS)

- EARTHQUAKES (1973-PRESENT) (SOURCE: CGS)
- CGS LANDSLIDES (SOURCE: CGS)
- COAL MINES SUBSIDENCE HAZARD (SOURCE: CGS)
- LOW
- MODERATE
- SEVERE

CGS
RADIOACTIVITY: <https://cologeosurvey.maps.arcgis.com/apps/webappviewer/index.html?id=c5381e1335284d63bfa5d4b018b3372f>
EARTHQUAKES: <https://cgsarcimage.mines.edu/ON-001/>
LANDSLIDES: <https://cologeosurvey.maps.arcgis.com/apps/webappviewer/index.html?id=9dd73db7bc34139abe51599396e2648>
COAL MINES: <https://cologeosurvey.maps.arcgis.com/apps/webappviewer/index.html?id=1891e3149eda44af9dc8af81c4dc58a8>

COGCC
GIS ONLINE: https://cogccmap.state.co.us/cogcc_gis_online/

FEMA
FLOOD ZONES: <https://msc.fema.gov/portal/advanceSearch>



**PDC
ENERGY**

4000 Burlington Avenue
Evans, Colorado 80620



Consulting, LLC

LOVELAND OFFICE
6706 North Franklin Avenue
Loveland, Colorado 80538
Phone 970-776-4331

SHERIDAN OFFICE
1095 Saberton Avenue
Sheridan, Wyoming 82801
Phone 307-674-0609



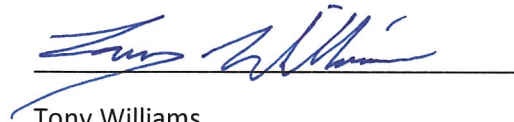
NAD83 CO-Nft
1" = 2,500ft

0 1,250 2,500

Drawn by: BB
Revised: AK

Date: 5 Nov 2021
Date: 15 Mar 2023

I certify that I am a Professional Geologist, having met the educational requirements and professional work experience required by C.R.S. 23-41-208(b). I have reviewed information pertaining to this Oil and Gas Location and the surrounding area, and have identified no Geologic Hazards within a one mile radius.



Tony Williams
Senior Development Geologist
PDC Energy Inc.