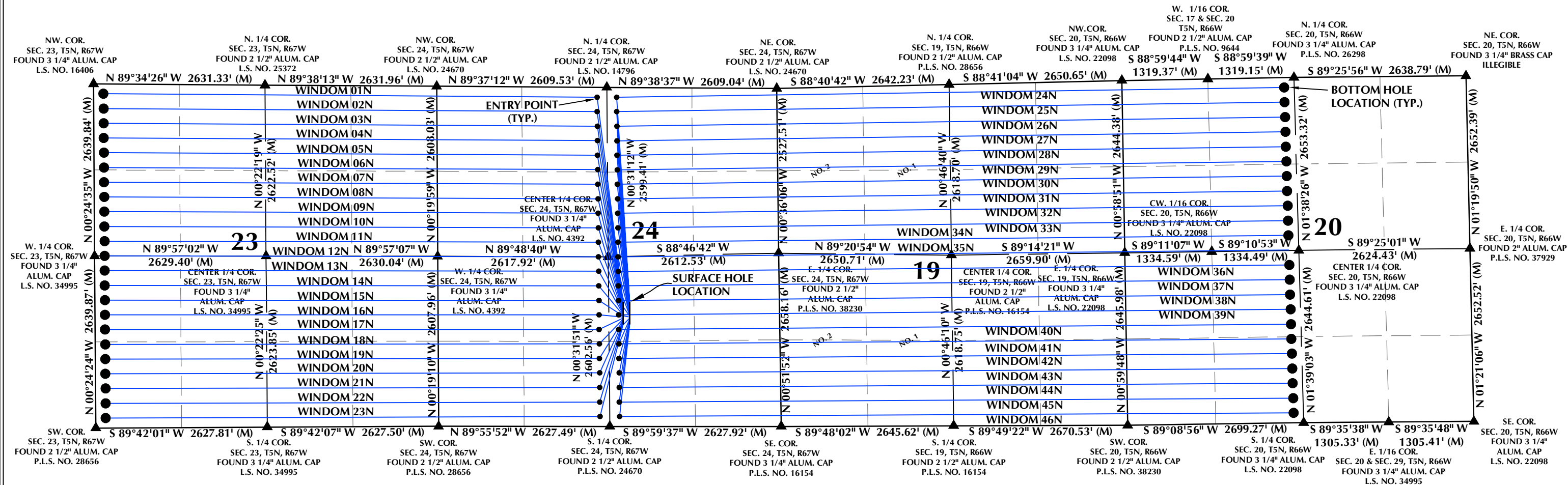
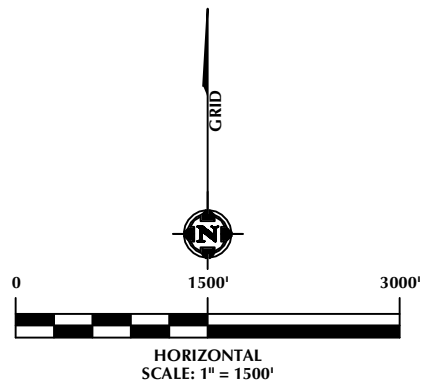


DIRECTIONAL WELL PLAT  
SECTIONS 19 & 20, T5N, R66W & SECTIONS 23 & 24, T5N, R67W

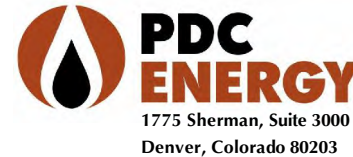


- NOTES:
- ▲ INDICATES SECTION CORNER.
  - INDICATES CALCULATED CORNER.
  - BASIS OF BEARING DERIVED FROM COLORADO COORDINATE SYSTEM OF 1983, NORTH ZONE.
  - ALL MEASURED DISTANCES ARE GRID.
  - COMBINED SCALE FACTOR: .99972442 CALCULATED FROM THE C. 1/4 CORNER OF SECTION 24, T5N, R67W.
  - WELL FOOTAGES ARE MEASURED AT RIGHT ANGLES TO THE SECTION LINES.



LOVELAND OFFICE  
6706 North Franklin Avenue  
Loveland, Colorado 80538  
Phone 970-776-4331

SHERIDAN OFFICE  
1095 Saberton Avenue  
Sheridan, Wyoming 82801  
Phone 307-674-0609



WINDOM 5N67W24 1-46

DIRECTIONAL WELL PLAT  
WINDOM 01N,  
WINDOM 02N, WINDOM 03N, WINDOM 04N, WINDOM 05N, WINDOM 06N,  
WINDOM 07N, WINDOM 08N, WINDOM 09N, WINDOM 10N, WINDOM 11N,  
WINDOM 12N, WINDOM 13N, WINDOM 14N, WINDOM 15N, WINDOM 16N,  
WINDOM 17N, WINDOM 18N, WINDOM 19N, WINDOM 20N, WINDOM 21N,  
WINDOM 22N, WINDOM 23N, WINDOM 24N, WINDOM 25N, WINDOM 26N,  
WINDOM 27N, WINDOM 28N, WINDOM 29N, WINDOM 30N, WINDOM 31N,  
WINDOM 32N, WINDOM 33N, WINDOM 34N, WINDOM 35N, WINDOM 36N,  
WINDOM 37N, WINDOM 38N, WINDOM 39N, WINDOM 40N, WINDOM 41N,  
WINDOM 42N, WINDOM 43N, WINDOM 44N, WINDOM 45N & WINDOM 46N  
SECTIONS 19 & 20, T5N, R66W & SECTIONS 23 & 24, T5N, R67W  
WELD COUNTY, COLORADO

DRAFTED BY:	SJM	CHECKED BY:	RKF	SHEET NO:
DATE DRAFTED:	11/5/21	DATE SURVEYED:	10/29/21	1A
REVISED:		FILE NAME:	18-55	1A OF 1

DIRECTIONAL WELL PLAT  
SECTIONS 19 & 20, T5N, R66W & SECTIONS 23 & 24, T5N, R67W

WELL NOTES:  
WINDOM 01N  
SURFACE HOLE LOCATION: 1902' FSL, 2393' FEL (SEC. 24, T5N, R67W)  
ENTRY POINT: 150' FNL, 2460' FWL (SEC. 24, T5N, R67W)  
BOTTOM HOLE LOCATION: 150' FNL, 150' FWL (SEC. 23, T5N, R67W)  
WINDOM 02N  
SURFACE HOLE LOCATION: 1887' FSL, 2394' FEL (SEC. 24, T5N, R67W)  
ENTRY POINT: 373' FNL, 2461' FWL (SEC. 24, T5N, R67W)  
BOTTOM HOLE LOCATION: 376' FNL, 150' FWL (SEC. 23, T5N, R67W)  
WINDOM 03N  
SURFACE HOLE LOCATION: 1872' FSL, 2394' FEL (SEC. 24, T5N, R67W)  
ENTRY POINT: 596' FNL, 2461' FWL (SEC. 24, T5N, R67W)  
BOTTOM HOLE LOCATION: 602' FNL, 150' FWL (SEC. 23, T5N, R67W)  
WINDOM 04N  
SURFACE HOLE LOCATION: 1857' FSL, 2394' FEL (SEC. 24, T5N, R67W)  
ENTRY POINT: 818' FNL, 2462' FWL (SEC. 24, T5N, R67W)  
BOTTOM HOLE LOCATION: 829' FNL, 150' FWL (SEC. 23, T5N, R67W)  
WINDOM 5N  
SURFACE HOLE LOCATION: 1842' FSL, 2394' FEL (SEC. 24, T5N, R67W)  
ENTRY POINT: 1041' FNL, 2463' FWL (SEC. 24, T5N, R67W)  
BOTTOM HOLE LOCATION: 1055' FNL, 150' FWL (SEC. 23, T5N, R67W)  
WINDOM 06N  
SURFACE HOLE LOCATION: 1827' FSL, 2395' FEL (SEC. 24, T5N, R67W)  
ENTRY POINT: 1264' FNL, 2463' FWL (SEC. 24, T5N, R67W)  
BOTTOM HOLE LOCATION: 1281' FNL, 150' FWL (SEC. 23, T5N, R67W)  
WINDOM 07N  
SURFACE HOLE LOCATION: 1812' FSL, 2395' FEL (SEC. 24, T5N, R67W)  
ENTRY POINT: 1487' FNL, 2464' FWL (SEC. 24, T5N, R67W)  
BOTTOM HOLE LOCATION: 1507' FNL, 150' FWL (SEC. 23, T5N, R67W)  
WINDOM 08N  
SURFACE HOLE LOCATION: 1797' FSL, 2395' FEL (SEC. 24, T5N, R67W)  
ENTRY POINT: 1710' FNL, 2465' FWL (SEC. 24, T5N, R67W)  
BOTTOM HOLE LOCATION: 1734' FNL, 150' FWL (SEC. 23, T5N, R67W)  
WINDOM 09N  
SURFACE HOLE LOCATION: 1782' FSL, 2395' FEL (SEC. 24, T5N, R67W)  
ENTRY POINT: 1933' FNL, 2466' FWL (SEC. 24, T5N, R67W)  
BOTTOM HOLE LOCATION: 1960' FNL, 150' FWL (SEC. 23, T5N, R67W)  
WINDOM 10N  
SURFACE HOLE LOCATION: 1767' FSL, 2395' FEL (SEC. 24, T5N, R67W)  
ENTRY POINT: 2155' FNL, 2466' FWL (SEC. 24, T5N, R67W)  
BOTTOM HOLE LOCATION: 2186' FNL, 150' FWL (SEC. 23, T5N, R67W)  
WINDOM 11N  
SURFACE HOLE LOCATION: 1752' FSL, 2396' FEL (SEC. 24, T5N, R67W)  
ENTRY POINT: 2378' FNL, 2467' FWL (SEC. 24, T5N, R67W)  
BOTTOM HOLE LOCATION: 2412' FNL, 150' FWL (SEC. 23, T5N, R67W)  
WINDOM 12N  
SURFACE HOLE LOCATION: 1737' FSL, 2396' FEL (SEC. 24, T5N, R67W)  
ENTRY POINT: 2601' FSL, 2468' FWL (SEC. 24, T5N, R67W)  
BOTTOM HOLE LOCATION: 2639' FSL, 150' FWL (SEC. 23, T5N, R67W)

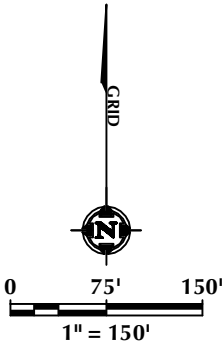
WINDOM 13N  
SURFACE HOLE LOCATION: 1722' FSL, 2396' FEL (SEC. 24, T5N, R67W)  
ENTRY POINT: 2378' FSL, 2469' FWL (SEC. 24, T5N, R67W)  
BOTTOM HOLE LOCATION: 2413' FSL, 150' FWL (SEC. 23, T5N, R67W)  
WINDOM 14N  
SURFACE HOLE LOCATION: 1707' FSL, 2396' FEL (SEC. 24, T5N, R67W)  
ENTRY POINT: 2156' FSL, 2469' FWL (SEC. 24, T5N, R67W)  
BOTTOM HOLE LOCATION: 2186' FSL, 150' FWL (SEC. 23, T5N, R67W)  
WINDOM 15N  
SURFACE HOLE LOCATION: 1692' FSL, 2397' FEL (SEC. 24, T5N, R67W)  
ENTRY POINT: 1933' FSL, 2470' FWL (SEC. 24, T5N, R67W)  
BOTTOM HOLE LOCATION: 1960' FSL, 150' FWL (SEC. 23, T5N, R67W)  
WINDOM 16N  
SURFACE HOLE LOCATION: 1677' FSL, 2397' FEL (SEC. 24, T5N, R67W)  
ENTRY POINT: 1710' FSL, 2471' FWL (SEC. 24, T5N, R67W)  
BOTTOM HOLE LOCATION: 1734' FSL, 150' FWL (SEC. 23, T5N, R67W)  
WINDOM 17N  
SURFACE HOLE LOCATION: 1662' FSL, 2397' FEL (SEC. 24, T5N, R67W)  
ENTRY POINT: 1487' FSL, 2472' FWL (SEC. 24, T5N, R67W)  
BOTTOM HOLE LOCATION: 1508' FSL, 150' FWL (SEC. 23, T5N, R67W)  
WINDOM 18N  
SURFACE HOLE LOCATION: 1647' FSL, 2397' FEL (SEC. 24, T5N, R67W)  
ENTRY POINT: 1264' FSL, 2473' FWL (SEC. 24, T5N, R67W)  
BOTTOM HOLE LOCATION: 1281' FSL, 150' FWL (SEC. 23, T5N, R67W)  
WINDOM 19N  
SURFACE HOLE LOCATION: 1632' FSL, 2398' FEL (SEC. 24, T5N, R67W)  
ENTRY POINT: 1041' FSL, 2474' FWL (SEC. 24, T5N, R67W)  
BOTTOM HOLE LOCATION: 1055' FSL, 150' FWL (SEC. 23, T5N, R67W)  
WINDOM 20N  
SURFACE HOLE LOCATION: 1617' FSL, 2398' FEL (SEC. 24, T5N, R67W)  
ENTRY POINT: 819' FSL, 2474' FWL (SEC. 24, T5N, R67W)  
BOTTOM HOLE LOCATION: 829' FSL, 150' FWL (SEC. 23, T5N, R67W)  
WINDOM 21N  
SURFACE HOLE LOCATION: 1602' FSL, 2398' FEL (SEC. 24, T5N, R67W)  
ENTRY POINT: 596' FSL, 2475' FWL (SEC. 24, T5N, R67W)  
BOTTOM HOLE LOCATION: 603' FSL, 150' FWL (SEC. 23, T5N, R67W)  
WINDOM 22N  
SURFACE HOLE LOCATION: 1587' FSL, 2398' FEL (SEC. 24, T5N, R67W)  
ENTRY POINT: 373' FSL, 2476' FWL (SEC. 24, T5N, R67W)  
BOTTOM HOLE LOCATION: 376' FSL, 150' FWL (SEC. 23, T5N, R67W)  
WINDOM 23N  
SURFACE HOLE LOCATION: 1572' FSL, 2398' FEL (SEC. 24, T5N, R67W)  
ENTRY POINT: 150' FSL, 2477' FWL (SEC. 24, T5N, R67W)  
BOTTOM HOLE LOCATION: 150' FSL, 150' FWL (SEC. 23, T5N, R67W)  
WINDOM 24N  
SURFACE HOLE LOCATION: 1902' FSL, 2293' FEL (SEC. 24, T5N, R67W)  
ENTRY POINT: 150' FNL, 2459' FEL (SEC. 24, T5N, R67W)  
BOTTOM HOLE LOCATION: 150' FNL, 2490' FWL (SEC. 20, T5N, R66W)

WINDOM 25N  
SURFACE HOLE LOCATION: 1887' FSL, 2294' FEL (SEC. 24, T5N, R67W)  
ENTRY POINT: 373' FNL, 2459' FEL (SEC. 24, T5N, R67W)  
BOTTOM HOLE LOCATION: 377' FNL, 2493' FWL (SEC. 20, T5N, R66W)  
WINDOM 26N  
SURFACE HOLE LOCATION: 1872' FSL, 2294' FEL (SEC. 24, T5N, R67W)  
ENTRY POINT: 595' FNL, 2460' FEL (SEC. 24, T5N, R67W)  
BOTTOM HOLE LOCATION: 604' FNL, 2495' FWL (SEC. 20, T5N, R66W)  
WINDOM 27N  
SURFACE HOLE LOCATION: 1857' FSL, 2294' FEL (SEC. 24, T5N, R67W)  
ENTRY POINT: 818' FNL, 2460' FEL (SEC. 24, T5N, R67W)  
BOTTOM HOLE LOCATION: 831' FNL, 2498' FWL (SEC. 20, T5N, R66W)  
WINDOM 28N  
SURFACE HOLE LOCATION: 1842' FSL, 2294' FEL (SEC. 24, T5N, R67W)  
ENTRY POINT: 1041' FNL, 2460' FEL (SEC. 24, T5N, R67W)  
BOTTOM HOLE LOCATION: 1059' FNL, 2501' FWL (SEC. 20, T5N, R66W)  
WINDOM 29N  
SURFACE HOLE LOCATION: 1827' FSL, 2295' FEL (SEC. 24, T5N, R67W)  
ENTRY POINT: 1264' FNL, 2460' FEL (SEC. 24, T5N, R67W)  
BOTTOM HOLE LOCATION: 1286' FNL, 2503' FWL (SEC. 20, T5N, R66W)  
WINDOM 30N  
SURFACE HOLE LOCATION: 1812' FSL, 2295' FEL (SEC. 24, T5N, R67W)  
ENTRY POINT: 1486' FNL, 2461' FEL (SEC. 24, T5N, R67W)  
BOTTOM HOLE LOCATION: 1513' FNL, 2506' FWL (SEC. 20, T5N, R66W)  
WINDOM 31N  
SURFACE HOLE LOCATION: 1797' FSL, 2295' FEL (SEC. 24, T5N, R67W)  
ENTRY POINT: 1709' FNL, 2461' FEL (SEC. 24, T5N, R67W)  
BOTTOM HOLE LOCATION: 1740' FNL, 2509' FWL (SEC. 20, T5N, R66W)  
WINDOM 32N  
SURFACE HOLE LOCATION: 1782' FSL, 2295' FEL (SEC. 24, T5N, R67W)  
ENTRY POINT: 1932' FNL, 2461' FEL (SEC. 24, T5N, R67W)  
BOTTOM HOLE LOCATION: 1967' FNL, 2511' FWL (SEC. 20, T5N, R66W)  
WINDOM 33N  
SURFACE HOLE LOCATION: 1767' FSL, 2295' FEL (SEC. 24, T5N, R67W)  
ENTRY POINT: 2155' FNL, 2462' FEL (SEC. 24, T5N, R67W)  
BOTTOM HOLE LOCATION: 2194' FNL, 2514' FWL (SEC. 20, T5N, R66W)  
WINDOM 34N  
SURFACE HOLE LOCATION: 1752' FSL, 2296' FEL (SEC. 24, T5N, R67W)  
ENTRY POINT: 2377' FNL, 2462' FEL (SEC. 24, T5N, R67W)  
BOTTOM HOLE LOCATION: 2421' FNL, 2516' FWL (SEC. 20, T5N, R66W)  
WINDOM 35N  
SURFACE HOLE LOCATION: 1737' FSL, 2296' FEL (SEC. 24, T5N, R67W)  
ENTRY POINT: 2600' FSL, 2462' FEL (SEC. 24, T5N, R67W)  
BOTTOM HOLE LOCATION: 2649' FNL, 2519' FWL (SEC. 20, T5N, R66W)  
WINDOM 36N  
SURFACE HOLE LOCATION: 1722' FSL, 2296' FEL (SEC. 24, T5N, R67W)  
ENTRY POINT: 2378' FSL, 2464' FEL (SEC. 24, T5N, R67W)  
BOTTOM HOLE LOCATION: 2421' FSL, 2522' FWL (SEC. 20, T5N, R66W)

WINDOM 37N  
SURFACE HOLE LOCATION: 1707' FSL, 2296' FEL (SEC. 24, T5N, R67W)  
ENTRY POINT: 2155' FSL, 2465' FEL (SEC. 24, T5N, R67W)  
BOTTOM HOLE LOCATION: 2194' FSL, 2524' FWL (SEC. 20, T5N, R66W)  
WINDOM 38N  
SURFACE HOLE LOCATION: 1692' FSL, 2297' FEL (SEC. 24, T5N, R67W)  
ENTRY POINT: 1932' FSL, 2466' FEL (SEC. 24, T5N, R67W)  
BOTTOM HOLE LOCATION: 1967' FSL, 2527' FWL (SEC. 20, T5N, R66W)  
WINDOM 39N  
SURFACE HOLE LOCATION: 1677' FSL, 2297' FEL (SEC. 24, T5N, R67W)  
ENTRY POINT: 1709' FSL, 2468' FEL (SEC. 24, T5N, R67W)  
BOTTOM HOLE LOCATION: 1740' FSL, 2529' FWL (SEC. 20, T5N, R66W)  
WINDOM 40N  
SURFACE HOLE LOCATION: 1662' FSL, 2297' FEL (SEC. 24, T5N, R67W)  
ENTRY POINT: 1487' FSL, 2469' FEL (SEC. 24, T5N, R67W)  
BOTTOM HOLE LOCATION: 1513' FSL, 2532' FWL (SEC. 20, T5N, R66W)  
WINDOM 41N  
SURFACE HOLE LOCATION: 1647' FSL, 2297' FEL (SEC. 24, T5N, R67W)  
ENTRY POINT: 1264' FSL, 2470' FEL (SEC. 24, T5N, R67W)  
BOTTOM HOLE LOCATION: 1286' FSL, 2535' FWL (SEC. 20, T5N, R66W)  
WINDOM 42N  
SURFACE HOLE LOCATION: 1632' FSL, 2298' FEL (SEC. 24, T5N, R67W)  
ENTRY POINT: 1041' FSL, 2472' FEL (SEC. 24, T5N, R67W)  
BOTTOM HOLE LOCATION: 1059' FSL, 2537' FWL (SEC. 20, T5N, R66W)  
WINDOM 43N  
SURFACE HOLE LOCATION: 1617' FSL, 2298' FEL (SEC. 24, T5N, R67W)  
ENTRY POINT: 818' FSL, 2473' FEL (SEC. 24, T5N, R67W)  
BOTTOM HOLE LOCATION: 831' FSL, 2540' FWL (SEC. 20, T5N, R66W)  
WINDOM 44N  
SURFACE HOLE LOCATION: 1602' FSL, 2298' FEL (SEC. 24, T5N, R67W)  
ENTRY POINT: 596' FSL, 2474' FEL (SEC. 24, T5N, R67W)  
BOTTOM HOLE LOCATION: 604' FSL, 2542' FWL (SEC. 20, T5N, R66W)  
WINDOM 45N  
SURFACE HOLE LOCATION: 1587' FSL, 2298' FEL (SEC. 24, T5N, R67W)  
ENTRY POINT: 373' FSL, 2475' FEL (SEC. 24, T5N, R67W)  
BOTTOM HOLE LOCATION: 377' FSL, 2545' FWL (SEC. 20, T5N, R66W)  
WINDOM 46N  
SURFACE HOLE LOCATION: 1572' FSL, 2298' FEL (SEC. 24, T5N, R67W)  
ENTRY POINT: 150' FSL, 2477' FEL (SEC. 24, T5N, R67W)  
BOTTOM HOLE LOCATION: 150' FSL, 2548' FWL (SEC. 20, T5N, R66W)

WELL HEAD SPACING DETAIL

WINDOM 01N ● 15' ● WINDOM 24N  
WINDOM 02N ● 15' ● WINDOM 25N  
WINDOM 03N ● 15' ● WINDOM 26N  
WINDOM 04N ● 15' ● WINDOM 27N  
WINDOM 05N ● 15' ● WINDOM 28N  
WINDOM 06N ● 15' ● WINDOM 29N  
WINDOM 07N ● 15' ● WINDOM 30N  
WINDOM 08N ● 15' ● WINDOM 31N  
WINDOM 09N ● 15' ● WINDOM 32N  
WINDOM 10N ● 15' ● WINDOM 33N  
WINDOM 11N ● 15' ● WINDOM 34N  
WINDOM 12N ● 15' ● WINDOM 35N  
WINDOM 13N ● 15' ● WINDOM 36N  
WINDOM 14N ● 15' ● WINDOM 37N  
WINDOM 15N ● 15' ● WINDOM 38N  
WINDOM 16N ● 15' ● WINDOM 39N  
WINDOM 17N ● 15' ● WINDOM 40N  
WINDOM 18N ● 15' ● WINDOM 41N  
WINDOM 19N ● 15' ● WINDOM 42N  
WINDOM 20N ● 15' ● WINDOM 43N  
WINDOM 21N ● 15' ● WINDOM 44N  
WINDOM 22N ● 15' ● WINDOM 45N  
WINDOM 23N ● 15' ● WINDOM 46N



LOVELAND OFFICE  
6706 North Franklin Avenue  
Loveland, Colorado 80538  
Phone 970-776-4331  
  
SHERIDAN OFFICE  
1095 Saberton Avenue  
Sheridan, Wyoming 82801  
Phone 307-674-0609



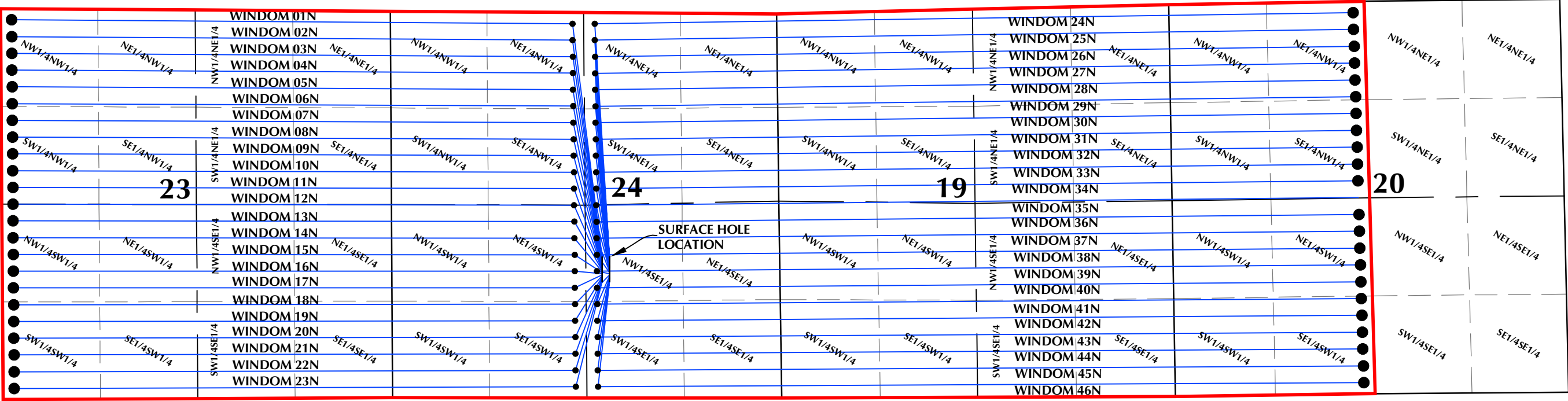
**PDC  
ENERGY**  
1775 Sherman, Suite 3000  
Denver, Colorado 80203

WINDOM 5N67W24 1-46

DIRECTIONAL WELL PLAT  
WINDOM 01N,  
WINDOM 02N, WINDOM 03N, WINDOM 04N, WINDOM 05N, WINDOM 06N,  
WINDOM 07N, WINDOM 08N, WINDOM 09N, WINDOM 10N, WINDOM 11N,  
WINDOM 12N, WINDOM 13N, WINDOM 14N, WINDOM 15N, WINDOM 16N,  
WINDOM 17N, WINDOM 18N, WINDOM 19N, WINDOM 20N, WINDOM 21N,  
WINDOM 22N, WINDOM 23N, WINDOM 24N, WINDOM 25N, WINDOM 26N,  
WINDOM 27N, WINDOM 28N, WINDOM 29N, WINDOM 30N, WINDOM 31N,  
WINDOM 32N, WINDOM 33N, WINDOM 34N, WINDOM 35N, WINDOM 36N,  
WINDOM 37N, WINDOM 38N, WINDOM 39N, WINDOM 40N, WINDOM 41N,  
WINDOM 42N, WINDOM 43N, WINDOM 44N, WINDOM 45N & WINDOM 46N  
SECTIONS 19 & 20, T5N, R66W & SECTIONS 23 & 24, T5N, R67W  
WELD COUNTY, COLORADO

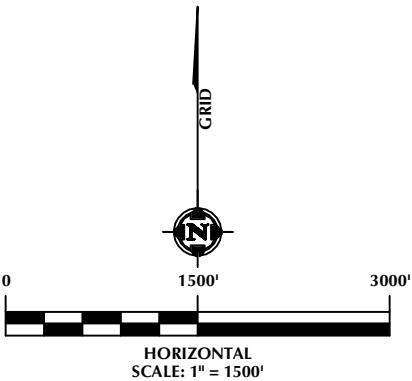
DRAFTED BY:	SJM	CHECKED BY:	RKF	SHEET NO:
DATE DRAFTED:	11/5/21	DATE SURVEYED:	10/29/21	1B
REVISED:		FILE NAME:	18-55	1B OF 1

DIRECTIONAL WELL PLAT  
SECTIONS 19 & 20, T5N, R66W & SECTIONS 23 & 24, T5N, R67W



LEGEND:

- DSU BOUNDARY
- WELLBORE TRAJECTORY
- ENTRY POINT
- BOTTOM HOLE LOCATION






LOVELAND OFFICE  
6706 North Franklin Avenue  
Loveland, Colorado 80538  
Phone 970-776-4331

SHERIDAN OFFICE  
1095 Saberton Avenue  
Sheridan, Wyoming 82801  
Phone 307-674-0609

**609**  
CONSULTING, LLC



**PDC**  
**ENERGY**

1775 Sherman, Suite 3000  
Denver, Colorado 80203

**WINDOM 5N67W24 1-46**

DIRECTIONAL WELL PLAT  
WINDOM 01N,  
WINDOM 02N, WINDOM 03N, WINDOM 04N, WINDOM 05N, WINDOM 06N,  
WINDOM 07N, WINDOM 08N, WINDOM 09N, WINDOM 10N, WINDOM 11N,  
WINDOM 12N, WINDOM 13N, WINDOM 14N, WINDOM 15N, WINDOM 16N,  
WINDOM 17N, WINDOM 18N, WINDOM 19N, WINDOM 20N, WINDOM 21N,  
WINDOM 22N, WINDOM 23N, WINDOM 24N, WINDOM 25N, WINDOM 26N,  
WINDOM 27N, WINDOM 28N, WINDOM 29N, WINDOM 30N, WINDOM 31N,  
WINDOM 32N, WINDOM 33N, WINDOM 34N, WINDOM 35N, WINDOM 36N,  
WINDOM 37N, WINDOM 38N, WINDOM 39N, WINDOM 40N, WINDOM 41N,  
WINDOM 42N, WINDOM 43N, WINDOM 44N, WINDOM 45N & WINDOM 46N  
SECTIONS 19 & 20, T5N, R66W & SECTIONS 23 & 24, T5N, R67W  
WELD COUNTY, COLORADO

DRAFTED BY:	SJM	CHECKED BY:	RKF	SHEET NO:
DATE DRAFTED:	11/5/21	DATE SURVEYED:	10/29/21	<b>1C</b>
REVISED:		FILE NAME:	18-55	1C OF 1