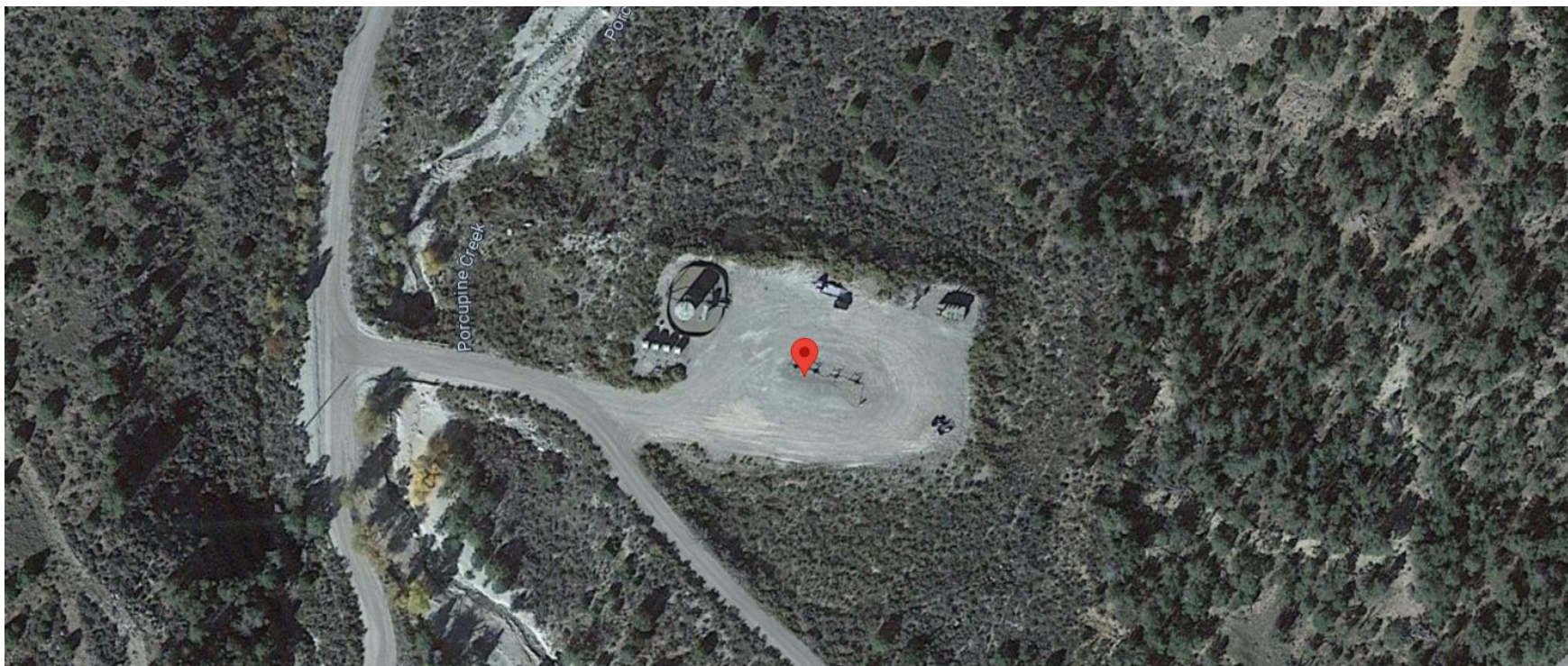


Storm Water Management and Erosion control
Location Name: CAERUS PICEANCE LLC SCARBER (RN2) Pad
Location #: 334668



**Location Overview: Location is within High
Priority/Density/Black Bear/NSO Habitat areas. Location is
approximately 48 yards from Porcupine Creek.**

Section/Township/Range: 2 7S94W



COLORADO
Energy & Carbon Management
Commission
Department of Natural Resources

Storm water Management and Erosion control
Location Name: CAERUS PICEANCE LLC SCARBER (RN2) Pad
Location #: 334668



North West corner of location.



North East corner of location.



South West corner of location.



South East corner of location.