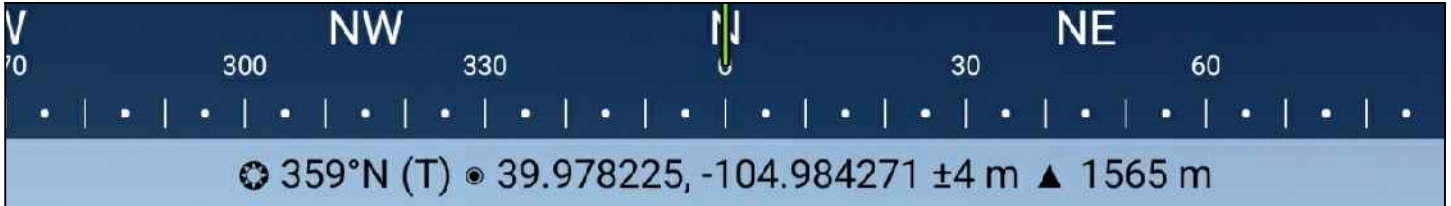


LOCATION PICTURES
WASHINGTON PAD
 NW1/4 SE1/4 SEC. 10, T1S, R68W, 6TH P.M.



23 Sep 2022, 10:36:34

VIEW NORTH 09/23/2022

M:\co - Well Head Staking\EXT01S68W10-02 (WASHINGTON W)\Drawings\EXT01S68W10-02 (WASHINGTON W) - 2A.dwg, 9/1/2023 8:28:02 AM, Joy Davis

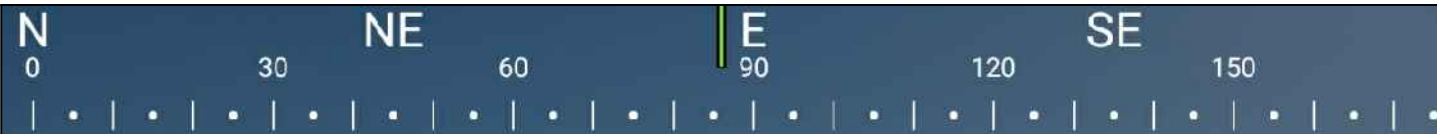


DRAWN BY	CHECKED BY
JDD	AAD
INITIAL SUBMITTAL	07/28/2022
REVISED	11/02/2022
DRAWING SIZE	8.5" X 11"
JOB NO.	EXT01S68W10-02
SHEET	1 OF 1

BASELINE
 Engineering - Planning - Surveying

4007 S. LINCOLN AVENUE, SUITE 405 • LOVELAND, COLORADO 80537
 P: 970.363.7600 • F: 970.363.7601 • www.baselinecorp.com

LOCATION PICTURES
WASHINGTON PAD
 NW1/4 SE1/4 SEC. 10, T1S, R68W, 6TH P.M.



☉ 85°E (T) • 39.978615, -104.984589 ±3 m ▲ 1568 m



23 Sep 2022, 10:34:46

VIEW EAST 09/23/2022

M:\co - Well Head Staking\EXT01S68W10-02 (WASHINGTON W)\Drawings\EXT01S68W10-02 (WASHINGTON W) - 2A.dwg, 9/1/2023 8:28:07 AM, Joy Davis



DRAWN BY	CHECKED BY
JDD	AAD
INITIAL SUBMITTAL	07/28/2022
REVISED	11/02/2022
DRAWING SIZE	8.5" X 11"
JOB NO.	EXT01S68W10-02
SHEET	1 OF 1



Engineering - Planning - Surveying

4007 S. LINCOLN AVENUE, SUITE 405 • LOVELAND, COLORADO 80537
 P: 970.363.7600 • F: 970.363.7601 • www.baselinecorp.com

LOCATION PICTURES
WASHINGTON PAD
 NW1/4 SE1/4 SEC. 10, T1S, R68W, 6TH P.M.



VIEW SOUTH 09/23/2022

M:\co - Well Head Staking\EXT01S68W10-02 (WASHINGTON W)\Drawings\EXT01S68W10-02 (WASHINGTON W) - 2A.dwg, 9/1/2023 8:28:12 AM, Joy Davis

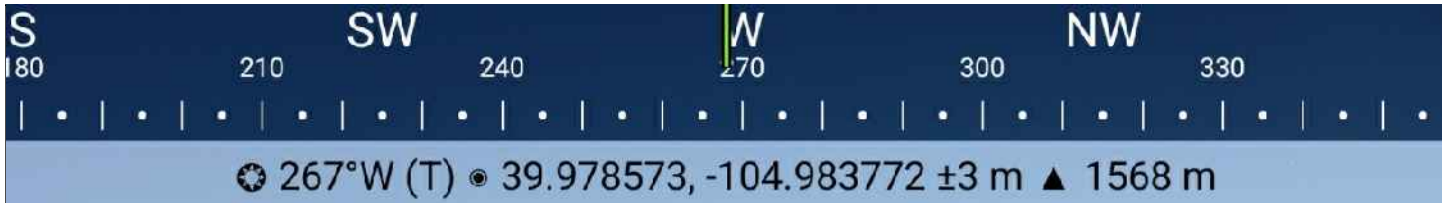


DRAWN BY JDD	CHECKED BY AAD
INITIAL SUBMITTAL	07/26/2022
REVISED	11/02/2022
DRAWING SIZE	8.5" X 11"
JOB NO.	EXT01S68W10-02
SHEET	1 OF 1



4007 S. LINCOLN AVENUE, SUITE 405 • LOVELAND, COLORADO 80537
 P: 970.363.7600 • F: 970.363.7601 • www.baselinecorp.com

LOCATION PICTURES
WASHINGTON PAD
 NW1/4 SE1/4 SEC. 10, T1S, R68W, 6TH P.M.



VIEW WEST 09/23/2022

M:\co - Well Head Staking\EXT01S68W10-02 (WASHINGTON W)\Drawings\EXT01S68W10-02 (WASHINGTON W) - 2A.dwg, 9/1/2023 8:28:17 AM, Joy Davis



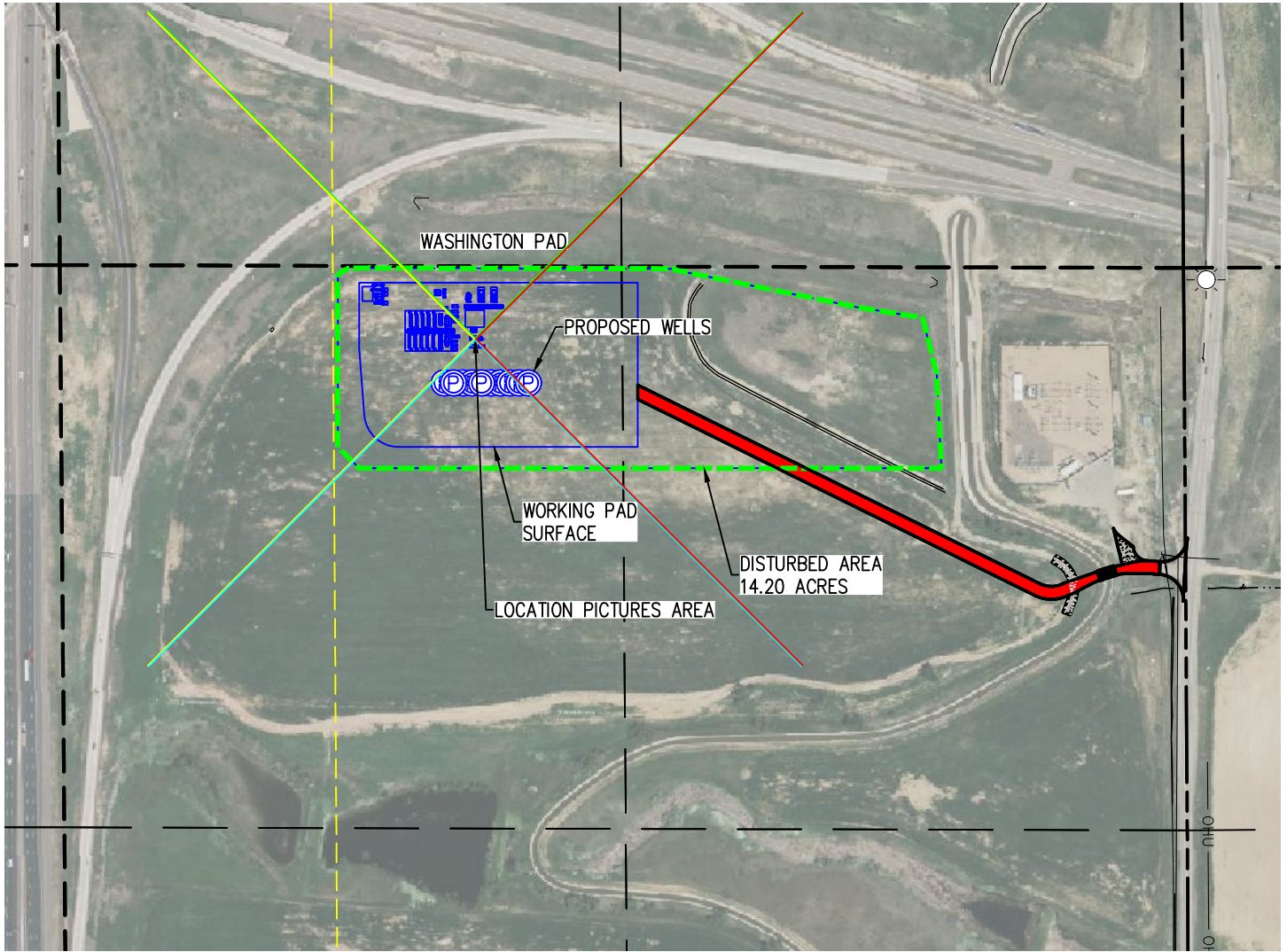
DRAWN BY	CHECKED BY
JDD	AAD
INITIAL SUBMITTAL	07/26/2022
REVISED	11/02/2022
DRAWING SIZE	8.5" X 11"
JOB NO.	EXT01S68W10-02
SHEET	1 OF 1



4007 S. LINCOLN AVENUE SUITE 405 • LOVELAND, COLORADO 80537
 P: 970.363.7600 • F: 970.363.7601 • www.baselinecorp.com

LOCATION PICTURES MAP WASHINGTON PAD

NW1/4 SE1/4 SEC. 10, T1S, R68W, 6TH P.M.

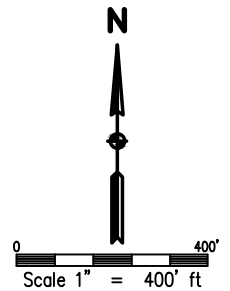


LEGEND

- WORKING PAD SURFACE
- DISTURBANCE AREA
- FIELD OF VIEW (NORTH)
- FIELD OF VIEW (EAST)
- FIELD OF VIEW (SOUTH)
- FIELD OF VIEW (WEST)

NOTE:

1. DISTURBED AREA DURING CONSTRUCTION = 14.20 ACRES
2. SURFACE USE = IRRIGATED CROP LAND



M:\co - Well Head Staking\EXT01S68W10-02 (WASHINGTON W)\Drawings\EXT01S68W10-02 (WASHINGTON W) - 2A.dwg, 9/1/2023 8:28:30 AM, Joy Davis



DRAWN BY JDD	CHECKED BY AAD
INITIAL SUBMITTAL	07/26/2022
REVISED	11/02/2022
DRAWING SIZE	8.5" X 11"
JOB NO.	EXT01S68W10-02
SHEET	1 OF 1

BASELINE

Engineering - Planning - Surveying

4007 S. LINCOLN AVENUE, SUITE 405 - LOVELAND, COLORADO 80537
P: 970.363.7600 • F: 970.363.7601 • www.baselinecorp.com