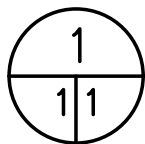
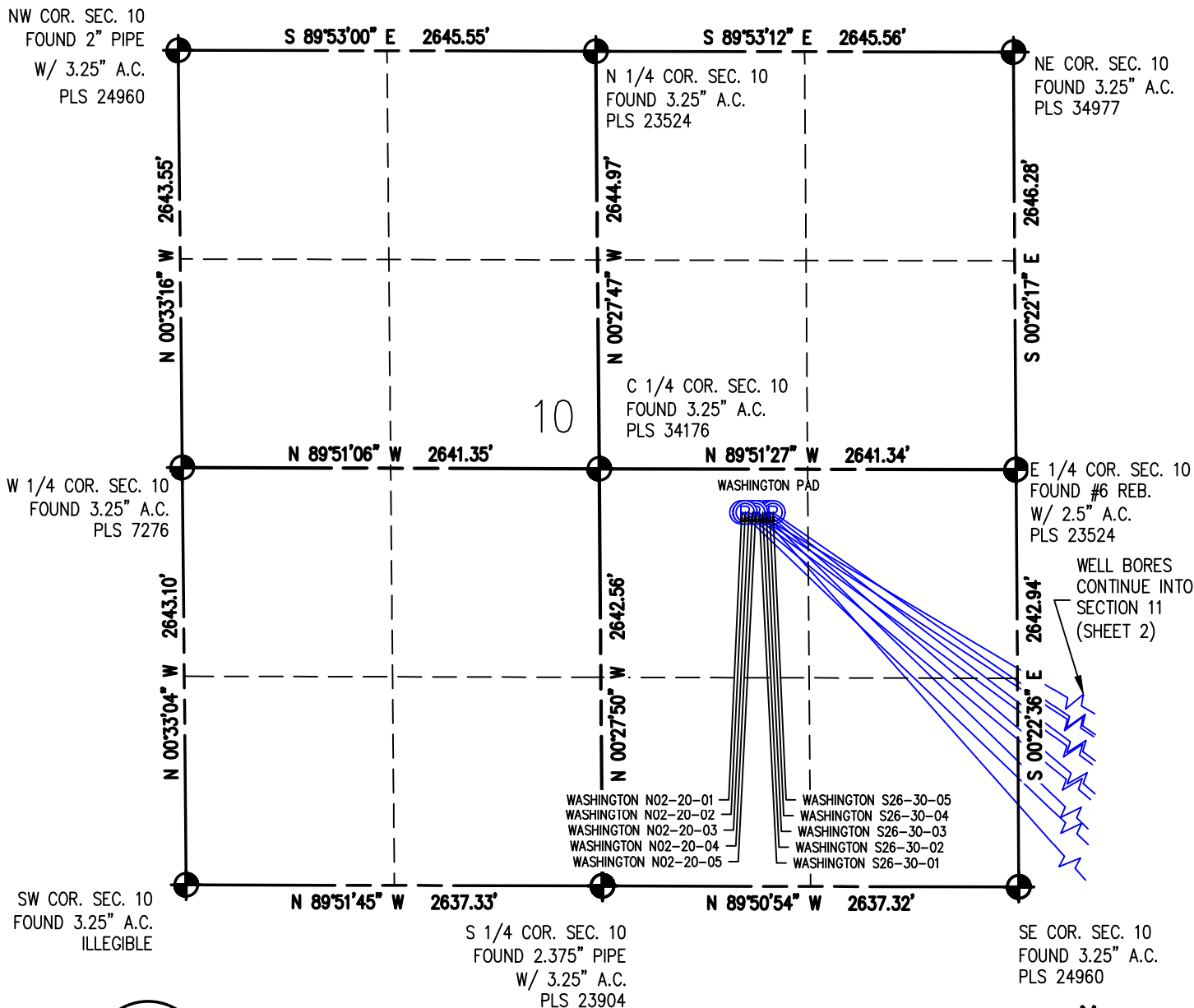


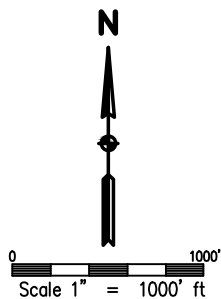
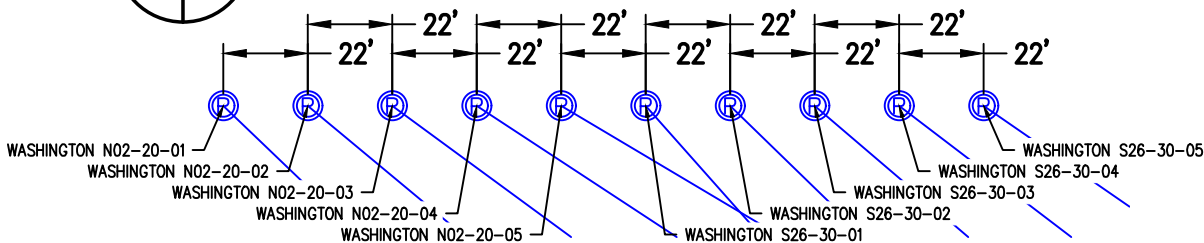
# DIRECTIONAL WELL PLAT WASHINGTON PAD

NW1/4 SE1/4 SECTION 10, TOWNSHIP 1S, RANGE 68 W, 6TH P.M.



## PROPOSED WELLHEAD DETAIL

SCALE: 1" = 50'



### LEGEND

- FOUND/SET SURVEY MONUMENT PER MONUMENT RECORD EXCEPTIONS NOTED.
- CALCULATED SURVEY MONUMENT POSITION
- CALCULATED DIMENSION



DRAWN BY	CHECKED BY
JDD	AAD
INITIAL SUBMITTAL	07/26/2022
REVISED	----
DRAWING SIZE	8.5" X 11"
JOB NO.	EXT01S68W10-02
SHEET	1 of 7

**BASELINE**  
Engineering - Planning - Surveying

4007 S. LINCOLN AVENUE, SUITE 405 - LOVELAND, COLORADO 80537  
P: 970.363.7600 • F: 970.363.7601 • www.baselinecorp.com

M:\\_co - Well Head Staking\EXT01S68W10-02 (WASHINGTON W)\Drawings\EXT01S68W10-02 (WASHINGTON W) - 2.dwg, 8/16/2023 2:32:41 PM, Joy Davis

WELL BORES CONTINUE INTO SECTION 2 (SHEET 3)

# DIRECTIONAL WELL PLAT WASHINGTON PAD

NW1/4 SE1/4 SECTION 10, TOWNSHIP 1S, RANGE 68 W, 6TH P.M.

NW COR. SEC. 11  
FOUND 3.25" A.C.  
PLS 34977

N 1/4 COR. SEC. 11  
FOUND #6 REB.  
W/ 3.25" A.C.  
PLS 24960

NE COR. SEC. 11  
FOUND AXLE

W 1/4 COR. SEC. 11  
FOUND #6 REB.  
W/ 2.5" A.C.  
PLS 23524

11  
C 1/4 COR. SEC. 11  
FOUND 3.25" A.C.  
PLS 33203

E 1/4 COR. SEC. 11  
(CALCULATED FROM SURVEY RECORDS)

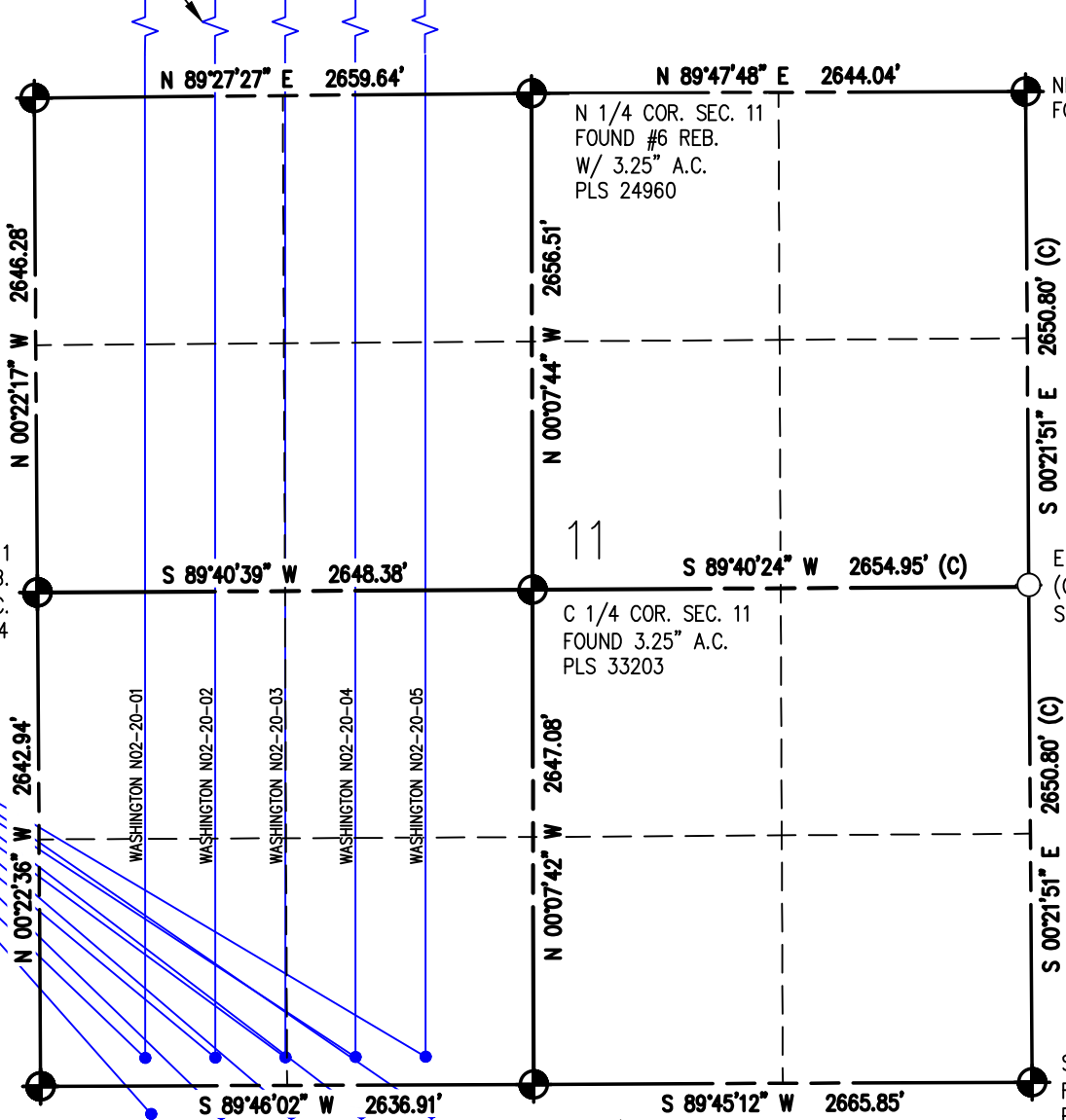
WELL BORES CONTINUE INTO SECTION 10 (SHEET 1)

SW COR. SEC. 11  
FOUND 3.25" A.C.  
PLS 24960

WELL BORES CONTINUE INTO SECTION 14 (SHEET 4)

S 1/4 COR. SEC. 11  
FOUND 2" PIPE  
W/ 3.25" A.C.  
PLS 24960

SE COR. SEC. 11  
FOUND 2.5" A.C.  
PLS 23524



M:\\_co - Well Head Staking\EXT01S68W10-02 (WASHINGTON W)\Drawings\EXT01S68W10-02 (WASHINGTON W) - 2.dwg, 8/16/2023 2:33:24 PM, Jay Davis

## LEGEND

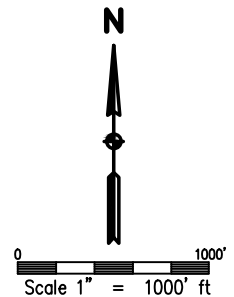
- ⊕ - FOUND/SET SURVEY MONUMENT PER MONUMENT RECORD EXCEPTIONS NOTED.
- - CALCULATED SURVEY MONUMENT POSITION
- (C) - CALCULATED DIMENSION



DRAWN BY	CHECKED BY
JDD	AAD
INITIAL SUBMITTAL	07/26/2022
REVISED	---
DRAWING SIZE	8.5" X 11"
JOB NO.	EXT01S68W10-02
SHEET	2 of 7



4007 S. LINCOLN AVENUE, SUITE 405 - LOVELAND, COLORADO 80537  
P: 970.363.7600 - F: 970.363.7601 - www.baselinecorp.com



# DIRECTIONAL WELL PLAT WASHINGTON PAD

NW1/4 SE1/4 SECTION 10, TOWNSHIP 1S, RANGE 68 W, 6TH P.M.

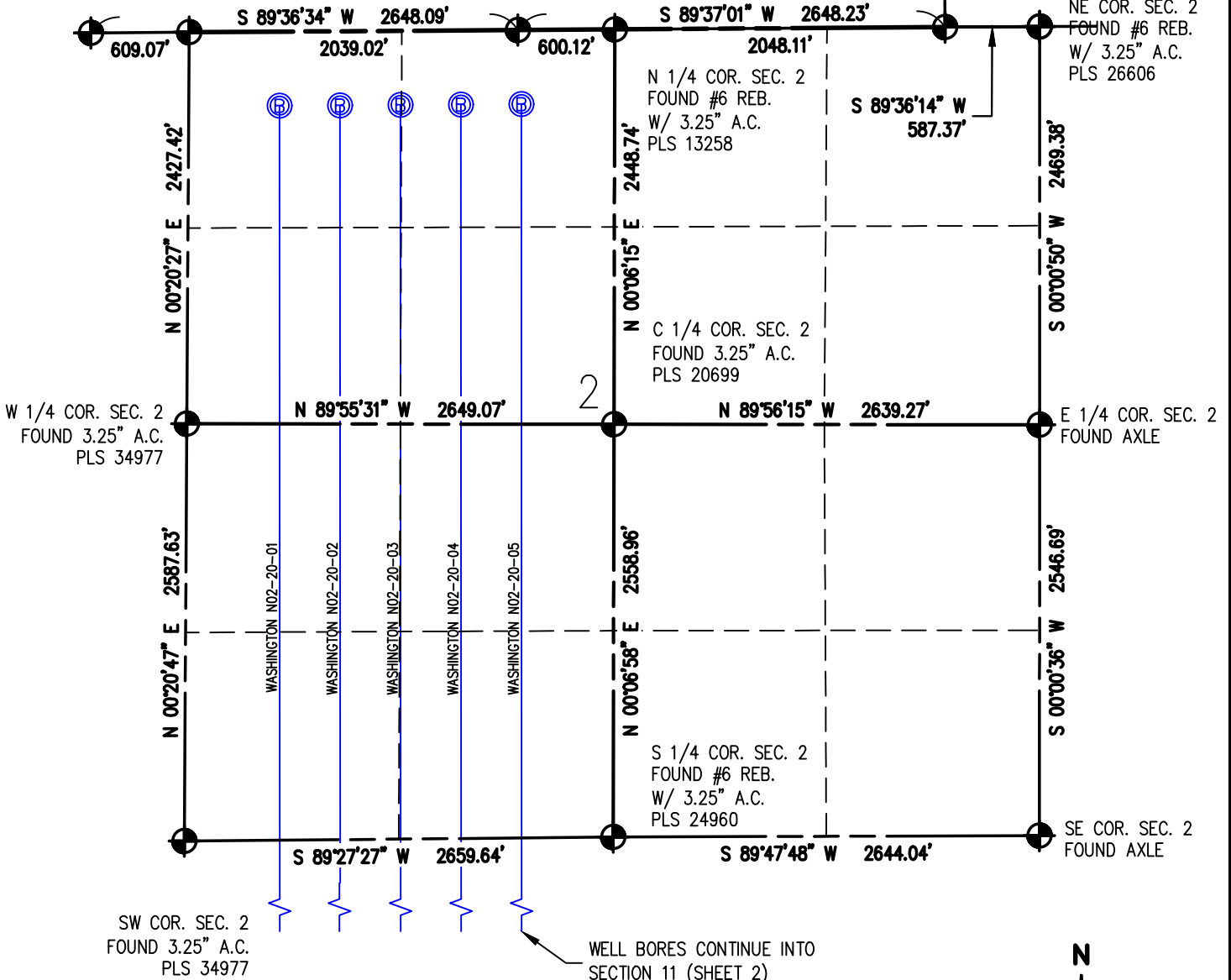
SW COR. SEC. 35  
FOUND 2.25" PIPE  
W/ 3.25" A.C.  
PLS 6973

NW COR. SEC. 2  
FOUND 3.25" A.C.  
PLS 34977

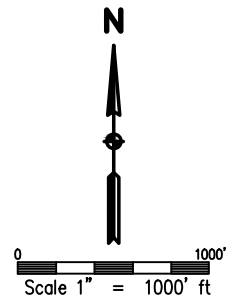
S 1/4 COR. SEC. 35  
FOUND 3.25" A.C.  
PLS 6973

SE COR. SEC. 35  
FOUND 2.25" PIPE  
W/ 3.25" A.C.  
PLS 6973

NE COR. SEC. 2  
FOUND #6 REB.  
W/ 3.25" A.C.  
PLS 26606



WELL BORES CONTINUE INTO SECTION 11 (SHEET 2)



### LEGEND

- FOUND/SET SURVEY MONUMENT PER MONUMENT RECORD EXCEPTIONS NOTED.
- CALCULATED SURVEY MONUMENT POSITION
- CALCULATED DIMENSION



DRAWN BY	CHECKED BY
JDD	AAD
INITIAL SUBMITTAL	07/26/2022
REVISED	---
DRAWING SIZE	8.5" X 11"
JOB NO.	EXT01S68W10-02
SHEET	3 of 7

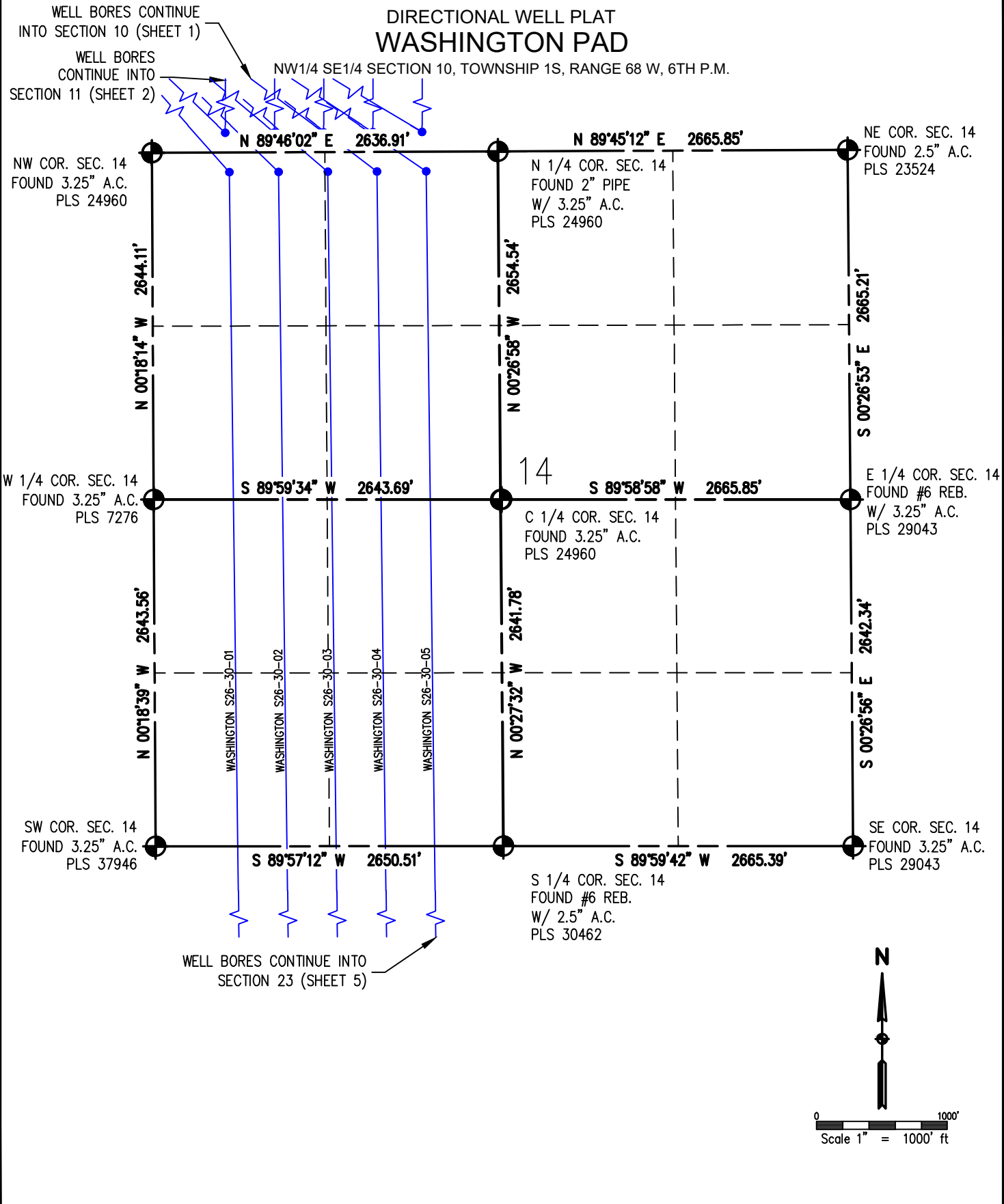
**BASELINE**  
Engineering - Planning - Surveying

4007 S. LINCOLN AVENUE, SUITE 405 - LOVELAND, COLORADO 80537  
P: 970.363.7600 • F: 970.363.7601 • www.baselinecorp.com

M:\\_co - Well Head Staking\EXT01S68W10-02 (WASHINGTON W)\Drawings\EXT01S68W10-02 (WASHINGTON W) - 2.dwg, 8/16/2023 2:34:04 PM, Jay Davis

# DIRECTIONAL WELL PLAT WASHINGTON PAD

NW 1/4 SE 1/4 SECTION 10, TOWNSHIP 1S, RANGE 68 W, 6TH P.M.



M:\\_co - Well Head Staking\EXT01S68W10-02 (WASHINGTON W)\Drawings\EXT01S68W10-02 (WASHINGTON W) - 2.dwg, 8/16/2023 2:34:49 PM, Jay Davis

LEGEND	
	- FOUND/SET SURVEY MONUMENT PER MONUMENT RECORD EXCEPTIONS NOTED.
	- CALCULATED SURVEY MONUMENT POSITION
	- CALCULATED DIMENSION



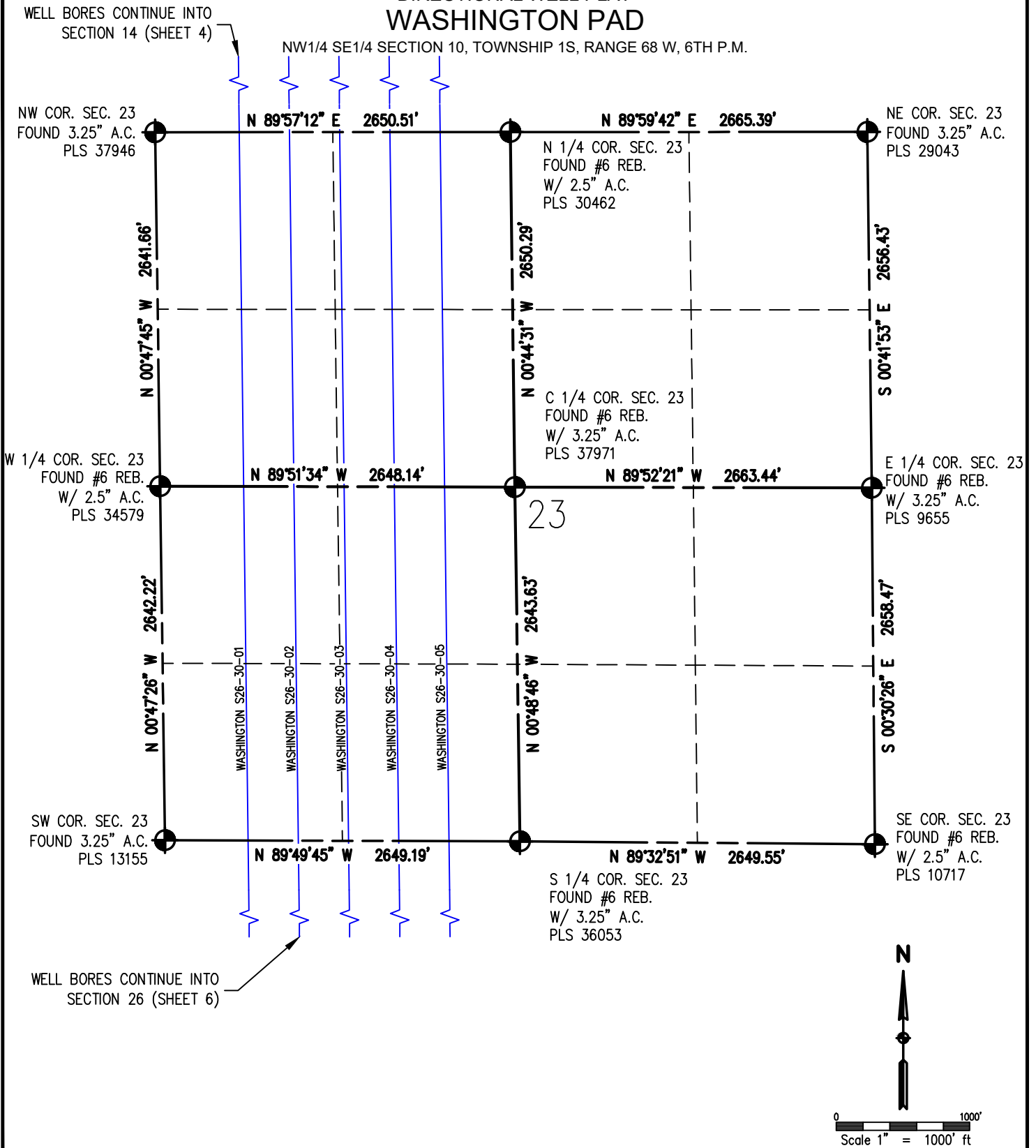
DRAWN BY	CHECKED BY
JDD	AAD
INITIAL SUBMITTAL	07/26/2022
REVISED	----
DRAWING SIZE	8.5" X 11"
JOB NO.	EXT01S68W10-02
SHEET	4 of 7

**Engineering - Planning - Surveying**

4007 S. LINCOLN AVENUE, SUITE 405 - LOVELAND, COLORADO 80537  
P: 970.363.7600 - F: 970.363.7601 - www.baselinecorp.com

# DIRECTIONAL WELL PLAT WASHINGTON PAD

NW1/4 SE1/4 SECTION 10, TOWNSHIP 1S, RANGE 68 W, 6TH P.M.



M:\co - Well Head Staking\EXT01S68W10-02 (WASHINGTON W)\Drawings\EXT01S68W10-02 (WASHINGTON W) - 2.dwg, 8/16/2023 2:35:35 PM, Jay Davis

LEGEND	
	FOUND/SET SURVEY MONUMENT PER MONUMENT RECORD EXCEPTIONS NOTED.
	CALCULATED SURVEY MONUMENT POSITION
	CALCULATED DIMENSION



DRAWN BY	CHECKED BY
JDD	AAD
INITIAL SUBMITTAL	07/26/2022
REVISED	----
DRAWING SIZE	8.5" X 11"
JOB NO.	EXT01S68W10-02
SHEET	5 of 7

**Engineering - Planning - Surveying**

4007 S. LINCOLN AVENUE, SUITE 405 - LOVELAND, COLORADO 80537  
P: 970.363.7600 • F: 970.363.7601 • www.baselinecorp.com

# DIRECTIONAL WELL PLAT WASHINGTON PAD

NW1/4 SE1/4 SECTION 10, TOWNSHIP 1S, RANGE 68 WEST, 6TH P.M.

WELL BORES CONTINUE INTO  
SECTION 23 (SHEET 5)

NW COR. SEC. 26  
FOUND 3.25" A.C.  
PLS 13155

NE COR. SEC. 26  
FOUND #6 REB.  
W/ 2.5" A.C.  
LS 10717

N 1/4 COR. SEC. 26  
FOUND #6 REB.  
W/ 3.25" A.C.  
PLS 36053

W 1/4 COR. SEC. 26  
FOUND 3.25" BRASS  
CAP, PLS 13155

E 1/4 COR. SEC. 26  
FOUND 3.25" A.C.  
LS 20155

C 1/4 COR. SEC. 26  
(CALCULATED FROM  
SURVEY RECORD)

SW COR. SEC. 26  
FOUND 3.25" A.C.  
PLS 10717

SE COR. SEC. 26  
FOUND 3.25" A.C.  
LS 20155

S 1/4 COR. SEC. 26  
FOUND 3.25" A.C.  
PLS 10717

N 01°04'14" W 2645.03'

N 01°03'44" W 2644.56'

S 89°49'45" E 2649.19'

N 89°53'12" W 2647.96'(C)

WASHINGTON S26-30-01

WASHINGTON S26-30-02

WASHINGTON S26-30-03

WASHINGTON S26-30-04

WASHINGTON S26-30-05

S 89°32'51" E 2649.55'

N 89°53'12" W 2648.19'(C)

N 01°02'43" W 2642.35'(C)

N 01°02'43" W 2636.13'(C)

S 01°01'24" E 2626.64'

S 01°01'08" E 2627.37'



S 89°55'27" W 2646.82'

S 89°55'53" W 2647.01'



0 1000'  
Scale 1" = 1000' ft

### LEGEND

-  - FOUND/SET SURVEY MONUMENT PER MONUMENT RECORD EXCEPTIONS NOTED.
-  - CALCULATED SURVEY MONUMENT POSITION
- (C) - CALCULATED DIMENSION



DRAWN BY	CHECKED BY
JDD	AAD
INITIAL SUBMITTAL	07/26/2022
REVISED	----
DRAWING SIZE	8.5" X 11"
JOB NO.	EXT01S68W10-02
SHEET	6 of 7



4007 S. LINCOLN AVENUE, SUITE 405 - LOVELAND, COLORADO 80537  
P: 970.363.7600 • F: 970.363.7601 • www.baselinecorp.com

# DIRECTIONAL WELL PLAT WASHINGTON PAD

NW1/4 SE1/4 SECTION 10, TOWNSHIP 1S, RANGE 68 WEST, 6TH P.M.

WASHINGTON N02-20-01  
SURFACE LOCATION  
 SEC. 10, T1S, R68W  
 GROUND ELEVATION = 5185.19'  
 PDOP = 1.4  
 LATITUDE = 39.978580'  
 LONGITUDE = -104.984548'  
 2368' FSL, 1740' FEL  
ENTRY POINT LOCATION  
 SEC. 11, T1S, R68W  
 LATITUDE = 39.972450'  
 LONGITUDE = -104.976338'  
 150' FSL, 560' FWL  
BOTTOM HOLE LOCATION  
 SEC. 2, T1S, R68W  
 LATITUDE = 39.999059'  
 LONGITUDE = -104.976145'  
 460' FNL, 563' FWL

WASHINGTON N02-20-05  
SURFACE LOCATION  
 SEC. 10, T1S, R68W  
 GROUND ELEVATION = 5183.34'  
 PDOP = 2.0  
 LATITUDE = 39.978579'  
 LONGITUDE = -104.984234'  
 2368' FSL, 1652' FEL  
ENTRY POINT LOCATION  
 SEC. 11, T1S, R68W  
 LATITUDE = 39.972443'  
 LONGITUDE = -104.970988'  
 150' FSL, 2060' FWL  
BOTTOM HOLE LOCATION  
 SEC. 2, T1S, R68W  
 LATITUDE = 39.999062'  
 LONGITUDE = -104.970792'  
 460' FNL, 2063' FWL

WASHINGTON S26-30-01  
SURFACE LOCATION  
 SEC. 10, T1S, R68W  
 GROUND ELEVATION = 5182.80'  
 PDOP = 1.4  
 LATITUDE = 39.978578'  
 LONGITUDE = -104.984156'  
 2368' FSL, 1630' FEL  
ENTRY POINT LOCATION  
 SEC. 14, T1S, R68W  
 LATITUDE = 39.971627'  
 LONGITUDE = -104.976231'  
 150' FNL, 590' FWL  
BOTTOM HOLE LOCATION  
 SEC. 26, T1S, R68W  
 LATITUDE = 39.929768'  
 LONGITUDE = -104.975872'  
 460' FSL, 590' FWL

WASHINGTON S26-30-05  
SURFACE LOCATION  
 SEC. 10, T1S, R68W  
 GROUND ELEVATION = 5181.12'  
 PDOP = 1.4  
 LATITUDE = 39.978577'  
 LONGITUDE = -104.983842'  
 2368' FSL, 1542' FEL  
ENTRY POINT LOCATION  
 SEC. 14, T1S, R68W  
 LATITUDE = 39.971619'  
 LONGITUDE = -104.970881'  
 150' FNL, 2090' FWL  
BOTTOM HOLE LOCATION  
 SEC. 26, T1S, R68W  
 LATITUDE = 39.929749'  
 LONGITUDE = -104.970525'  
 460' FSL, 2090' FWL

WASHINGTON N02-20-02  
SURFACE LOCATION  
 SEC. 10, T1S, R68W  
 GROUND ELEVATION = 5184.65'  
 PDOP = 1.4  
 LATITUDE = 39.978580'  
 LONGITUDE = -104.984470'  
 2368' FSL, 1718' FEL  
ENTRY POINT LOCATION  
 SEC. 11, T1S, R68W  
 LATITUDE = 39.972448'  
 LONGITUDE = -104.975001'  
 150' FSL, 935' FWL  
BOTTOM HOLE LOCATION  
 SEC. 2, T1S, R68W  
 LATITUDE = 39.999060'  
 LONGITUDE = -104.974807'  
 460' FNL, 938' FWL

WASHINGTON S26-30-02  
SURFACE LOCATION  
 SEC. 10, T1S, R68W  
 GROUND ELEVATION = 5182.38'  
 PDOP = 1.4  
 LATITUDE = 39.978578'  
 LONGITUDE = -104.984077'  
 2368' FSL, 1608' FEL  
ENTRY POINT LOCATION  
 SEC. 14, T1S, R68W  
 LATITUDE = 39.971625'  
 LONGITUDE = -104.974894'  
 150' FNL, 965' FWL  
BOTTOM HOLE LOCATION  
 SEC. 26, T1S, R68W  
 LATITUDE = 39.929764'  
 LONGITUDE = -104.974535'  
 460' FSL, 965' FWL



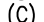
WASHINGTON N02-20-03  
SURFACE LOCATION  
 SEC. 10, T1S, R68W  
 GROUND ELEVATION = 5184.32'  
 PDOP = 1.4  
 LATITUDE = 39.978579'  
 LONGITUDE = -104.984391'  
 2368' FSL, 1696' FEL  
ENTRY POINT LOCATION  
 SEC. 11, T1S, R68W  
 LATITUDE = 39.972447'  
 LONGITUDE = -104.973663'  
 150' FSL, 1310' FWL  
BOTTOM HOLE LOCATION  
 SEC. 2, T1S, R68W  
 LATITUDE = 39.999061'  
 LONGITUDE = -104.973468'  
 460' FNL, 1313' FWL

WASHINGTON S26-30-03  
SURFACE LOCATION  
 SEC. 10, T1S, R68W  
 GROUND ELEVATION = 5181.92'  
 PDOP = 1.4  
 LATITUDE = 39.978578'  
 LONGITUDE = -104.983999'  
 2368' FSL, 1586' FEL  
ENTRY POINT LOCATION  
 SEC. 14, T1S, R68W  
 LATITUDE = 39.971623'  
 LONGITUDE = -104.973556'  
 150' FNL, 1340' FWL  
BOTTOM HOLE LOCATION  
 SEC. 26, T1S, R68W  
 LATITUDE = 39.929759'  
 LONGITUDE = -104.973199'  
 460' FSL, 1340' FWL

WASHINGTON N02-20-04  
SURFACE LOCATION  
 SEC. 10, T1S, R68W  
 GROUND ELEVATION = 5183.85'  
 PDOP = 1.4  
 LATITUDE = 39.978579'  
 LONGITUDE = -104.984313'  
 2368' FSL, 1674' FEL  
ENTRY POINT LOCATION  
 SEC. 11, T1S, R68W  
 LATITUDE = 39.972445'  
 LONGITUDE = -104.972325'  
 150' FSL, 1685' FWL  
BOTTOM HOLE LOCATION  
 SEC. 2, T1S, R68W  
 LATITUDE = 39.999061'  
 LONGITUDE = -104.972130'  
 460' FNL, 1688' FWL

WASHINGTON S26-30-04  
SURFACE LOCATION  
 SEC. 10, T1S, R68W  
 GROUND ELEVATION = 5181.41'  
 PDOP = 1.4  
 LATITUDE = 39.978577'  
 LONGITUDE = -104.983921'  
 2368' FSL, 1564' FEL  
ENTRY POINT LOCATION  
 SEC. 14, T1S, R68W  
 LATITUDE = 39.971621'  
 LONGITUDE = -104.972218'  
 150' FNL, 1715' FWL  
BOTTOM HOLE LOCATION  
 SEC. 26, T1S, R68W  
 LATITUDE = 39.929754'  
 LONGITUDE = -104.971862'  
 460' FSL, 1715' FWL

### LEGEND

-  - FOUND/SET SURVEY MONUMENT PER MONUMENT RECORD EXCEPTIONS NOTED.
-  - CALCULATED SURVEY MONUMENT POSITION
-  - CALCULATED DIMENSION



DRAWN BY	CHECKED BY
JDD	AAD
INITIAL SUBMITTAL	07/26/2022
REVISED	----
DRAWING SIZE	8.5" X 11"
JOB NO.	EXT01S68W10-02
SHEET	7 of 7

4007 S. LINCOLN AVENUE SUITE 405 - LOVELAND, COLORADO 80537  
 P: 970.363.7600 • F: 970.363.7601 • www.baselineincorp.com