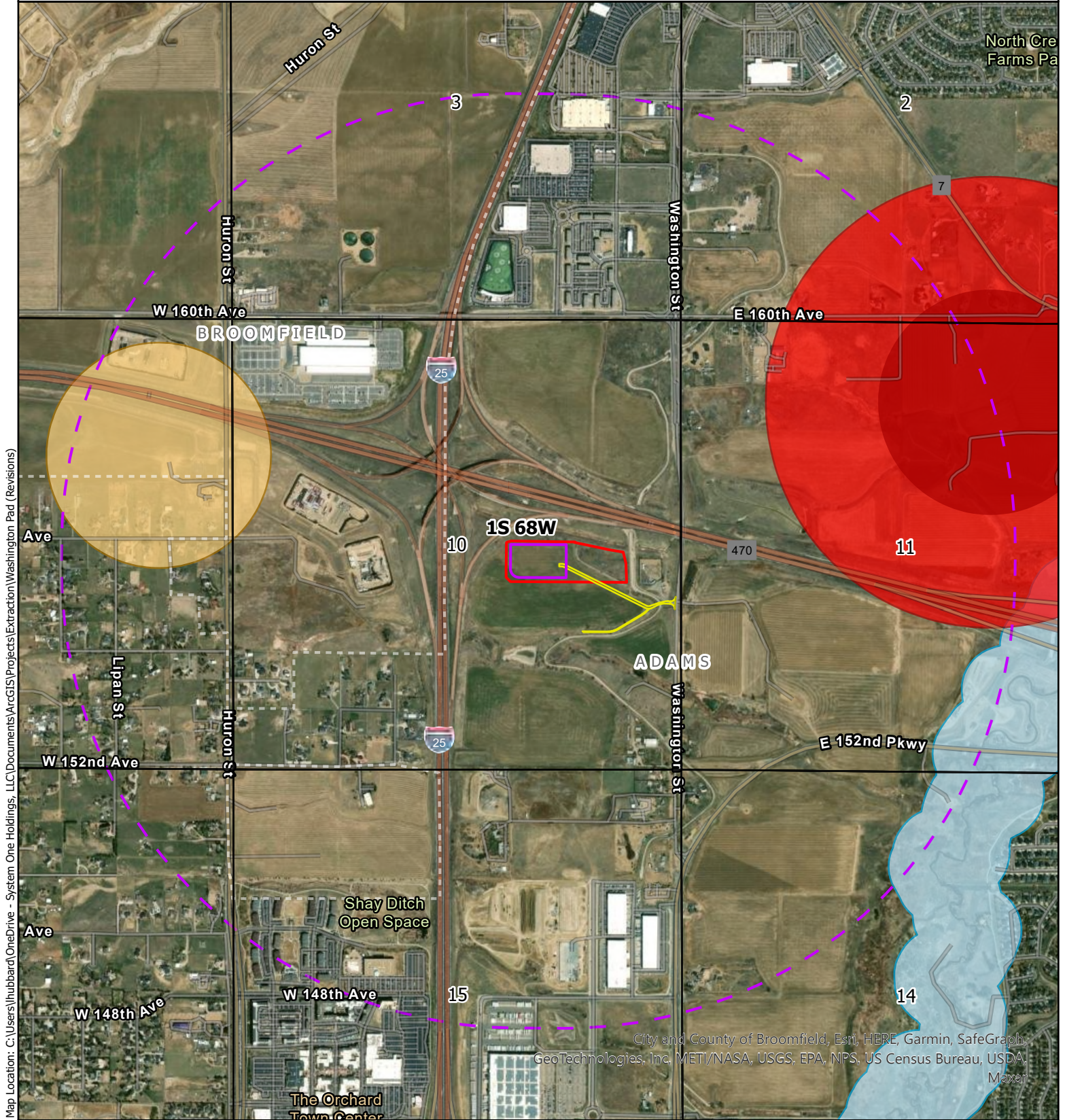


EXTRACTION OIL & GAS  
 WASHINGTON PAD  
 SE QTR SEC 10, T1S, R68W, 6th P.M.  
 ADAMS COUNTY, COLORADO



Map Location: C:\Users\hubbard\OneDrive - System One Holdings, LLC\Documents\ArcGIS\Projects\Extraction\Washington Pad (Revisions)

**WILDLIFE  
 HABITAT  
 DRAWING**

- Oil & Gas Location
- Working Pad Surface (WPS)
- One-Mile Radius around WPS
- Temporary Access Roads (to WPS & Temporary Air/Noise Monitoring Station)
- Burrowing Owl Active Nest HPH
- Bald Eagle Active Nest HPH (1/4-Mile Buffer)
- Bald Eagle Active Nest HPH (1/2-Mile Buffer)
- Aquatic Native Species Conservation Waters HPH

All pipeline and utility corridors associated with the O&G Location will be permitted and operated by third parties.

Projection: WGS 1984  
 Date: 08/07/2023  
 Drafted by: LMH

N  
  
0    1,000    2,000  
Feet

1 inch equals 2,000 feet