



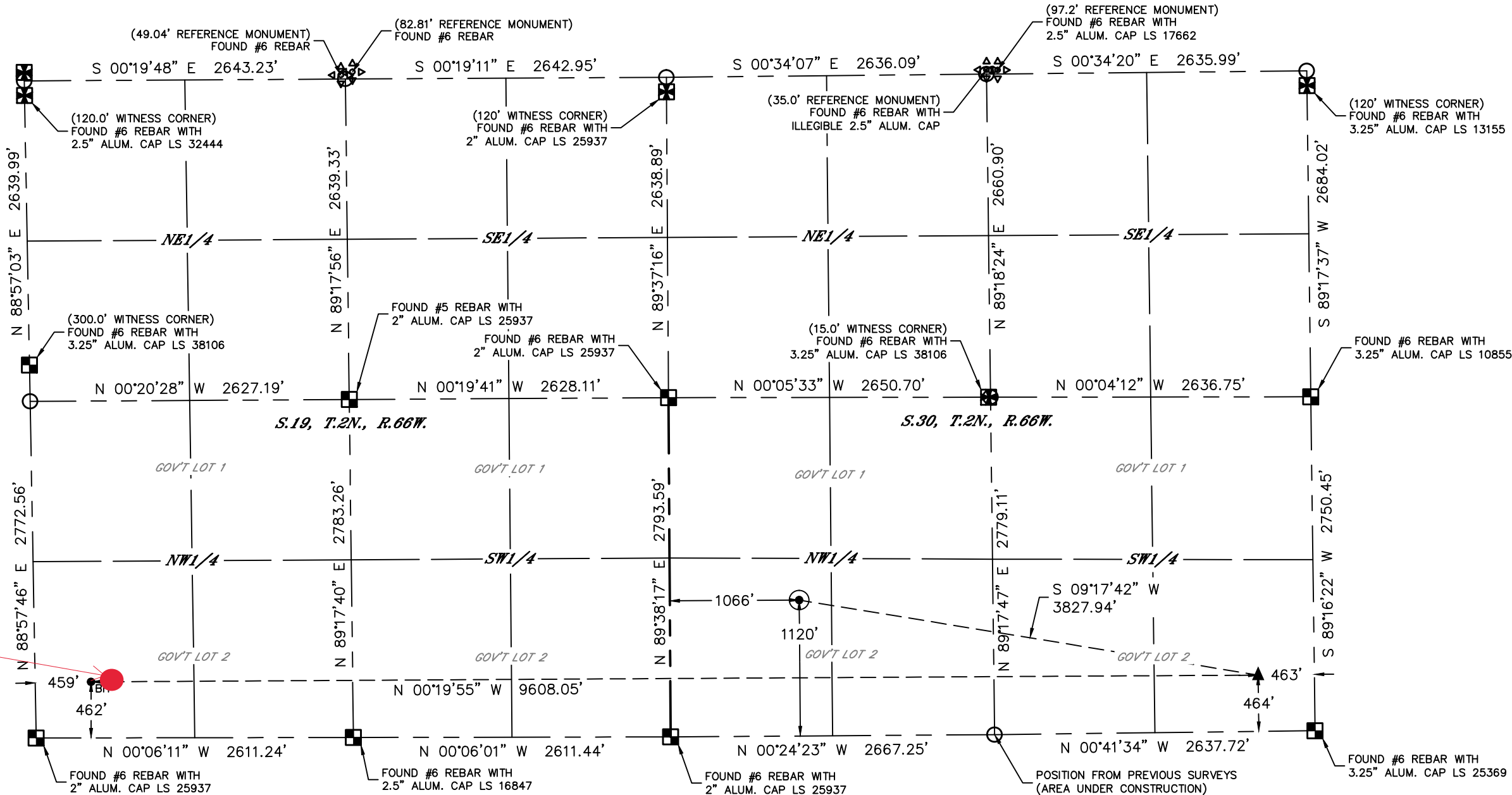
Lat40°, Inc. 6250 W. 10th Street, Unit 2, Greeley, CO 970-515-5294

WELL LOCATION CERTIFICATE

LG EVERIST 07
PETRO OPERATING COMPANY, LLC

SECTION: 30
TOWNSHIP: 2N
RANGE: 66W
6TH. P.M.
WELD COUNTY, CO

BPZ
460 FNL 462 FWL

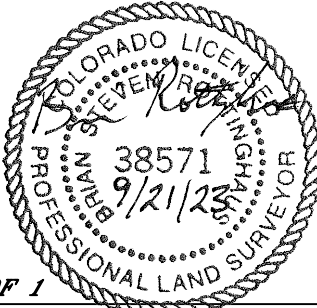
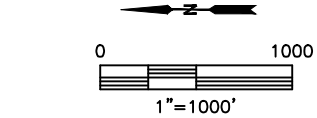


CLIENT: PETRO OPERATING COMPANY				LANDMAN: SEAN DOLFINGER		
INSTRUMENT OPERATOR: CASEY KOHOUT				SURVEY DATE: 12/15/2022	SURFACE USE: GRAVEL PIT	
SHL FOOTAGE	SHL LAT°	SHL LONG°	SHL PDOP	SHL ELEV (FT.)	SHL 1/4/1/4	SHL S-T-R
1066 FNL 1120 FWL	40.11344	-104.82602	1.4	4875	NW1/4	30-2-66

BHL FOOTAGE	BHL LAT°	BHL LONG°	BHL S-T-R	EP LAT°	EP LONG°	EP S-T-R
459 FNL 462 FWL	40.12945	-104.82827	19-2-66	40.10308	-104.82833	30-2-66

- LEGEND
- = ALIQUOT MONUMENT AS DESCRIBED
 - = CALCULATED POSITION
 - = SURFACE HOLE LOCATION (SHL)
 - ▲ = ENTRY POINT LOCATION (EP)
 - ◆ = TOP OF PRODUCTIVE ZONE (PZONE)
 - _{BH} = BOTTOM HOLE LOCATION (BHL)
 - ⊕ = EXISTING WELL
 - ⊖ = ABANDONED WELL

NOTE:
1) Bearings shown are Grid Bearings of the Colorado State Plane Coordinate System, North Zone, North American Datum 1983. The lineal dimensions as contained herein are based upon the "U.S. Survey Foot."
2) Distances to section lines measured at 90 degrees from said section lines.
3) Ground elevations are based on an observed GPS elevation (NAVD 1988 DATUM).
4) Latitude and Longitude shown are (NAD 83 DATUM).
5) IMPROVEMENTS: See LOCATION DRAWING for all visible improvements.
6) This map does not represent a boundary survey.



SHEET 1 OF 1
Brian S. Rottinghaus—On behalf of Lat40°, Inc.
Colorado Licensed Professional Land Surveyor No. 38571
DATE: 9/21/2023
PROJECT#: 2018223