

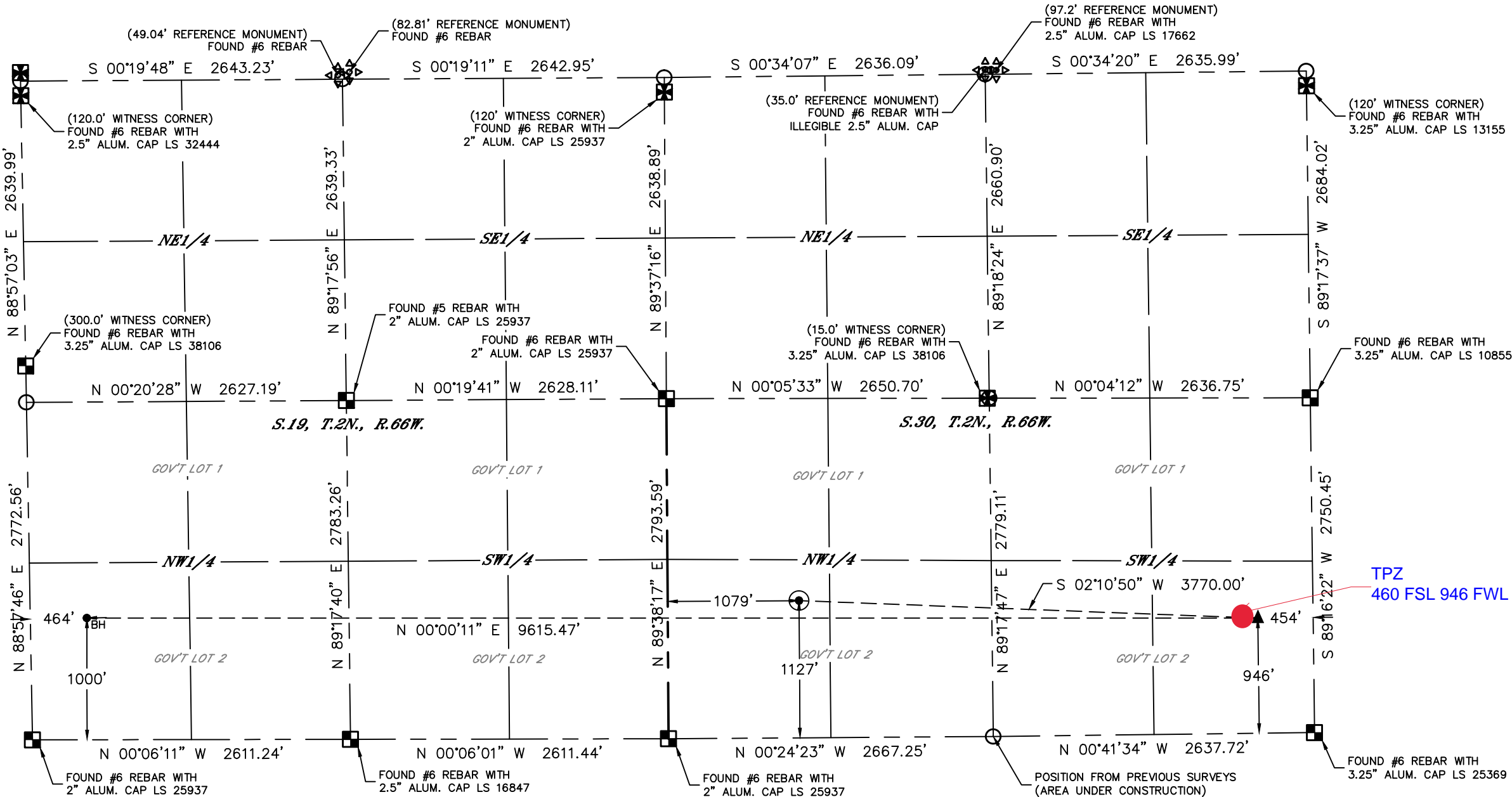


Lat40°, Inc. 6250 W. 10th Street, Unit 2, Greeley, CO 970-515-5294

WELL LOCATION CERTIFICATE

LG EVERIST 06
PETRO OPERATING COMPANY, LLC

SECTION: 30
TOWNSHIP: 2N
RANGE: 66W
6TH. P.M.
WELD COUNTY, CO

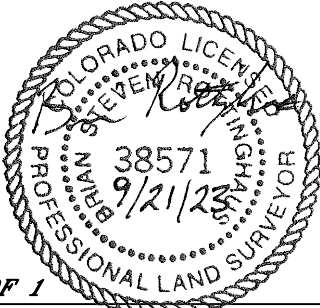


- LEGEND
- = ALIQUOT MONUMENT AS DESCRIBED
 - = CALCULATED POSITION
 - = SURFACE HOLE LOCATION (SHL)
 - ▲ = ENTRY POINT LOCATION (EP)
 - ◆ = TOP OF PRODUCTIVE ZONE (PZONE)
 - _{BH} = BOTTOM HOLE LOCATION (BHL)
 - ⊕ = EXISTING WELL
 - ⊖ = ABANDONED WELL

CLIENT: PETRO OPERATING COMPANY				LANDMAN: SEAN DOLFINGER			
INSTRUMENT OPERATOR: CASEY KOHOUT				SURVEY DATE: 12/15/2022		SURFACE USE: GRAVEL PIT	
SHL FOOTAGE				SHL LAT°	SHL LONG°	SHL PDOP	SHL ELEV (FT.)
1079	FNL	1127	FWL	40.11340	-104.82600	1.4	4875
BHL FOOTAGE				BHL LAT°	BHL LONG°	BHL S-T-R	EP LAT°
464	FNL	1000	FWL	40.12945	-104.82635	19-2-66	40.10306
							EP LONG°
							EP S-T-R
							30-2-66

NOTE:

- Bearings shown are Grid Bearings of the Colorado State Plane Coordinate System, North Zone, North American Datum 1983. The lineal dimensions as contained herein are based upon the "U.S. Survey Foot."
- Distances to section lines measured at 90 degrees from said section lines.
- Ground elevations are based on an observed GPS elevation (NAVD 1988 DATUM).
- Latitude and Longitude shown are (NAD 83 DATUM).
- IMPROVEMENTS: See LOCATION DRAWING for all visible improvements.
- This map does not represent a boundary survey.



SHEET 1 OF 1
Brian S. Rottinghaus—On behalf of Lat40°, Inc.
Colorado Licensed Professional Land Surveyor No. 38571
DATE: 9/21/2023
PROJECT#: 2018223