

Map Key

- * Project Location
- ▲ Water Well (Permit)
- 0.25 Mile Buffer
- 1 Mile Buffer
- Freshwater Emergent Wetland
- Freshwater Forested/Shrub Wetland
- Freshwater Pond
- Riverine
- Township Boundaries
- Section Boundaries



112 High Street
Buffalo, Wyoming 82834
855.684.5891

www.absarokasolutions.com

FEO.CO.0701.09

Grizzly #3-32H Sensitive Receptors Map

Jackson County, State of Colorado

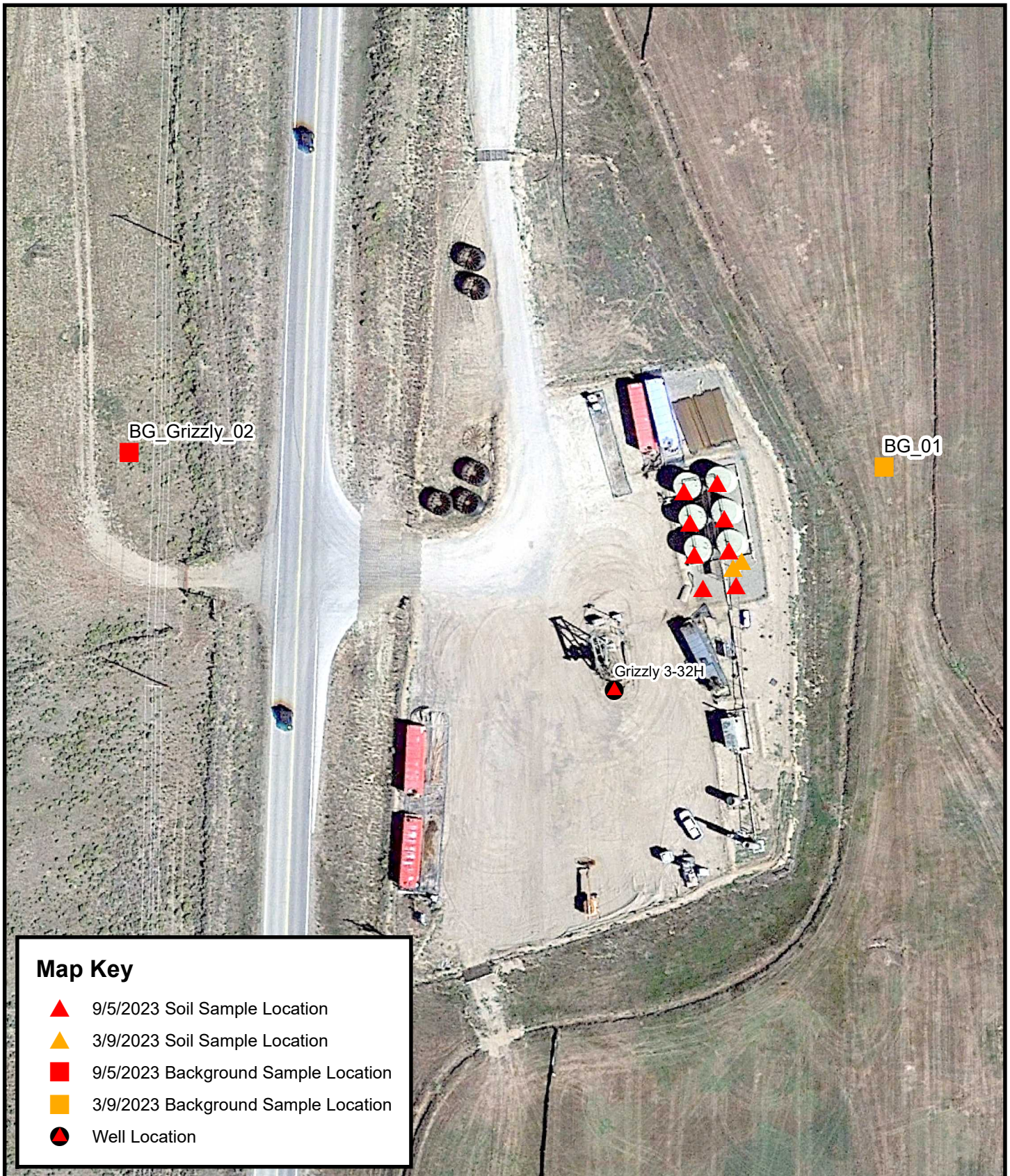
0 0.275 0.55 1.1 Miles

Coordinate System: WGS 1984 UTM Zone 13N



Date: 9/14/2023

Scale: 1:18,000



Map Key

- ▲ 9/5/2023 Soil Sample Location
- ▲ 3/9/2023 Soil Sample Location
- 9/5/2023 Background Sample Location
- 3/9/2023 Background Sample Location
- Well Location



112 High Street
Buffalo, Wyoming 82834
855.684.5891

www.absarokasolutions.com

FEO.CO.0701.09

Grizzly #3-32H Soil Sample Location Map Overview

Jackson County, Colorado

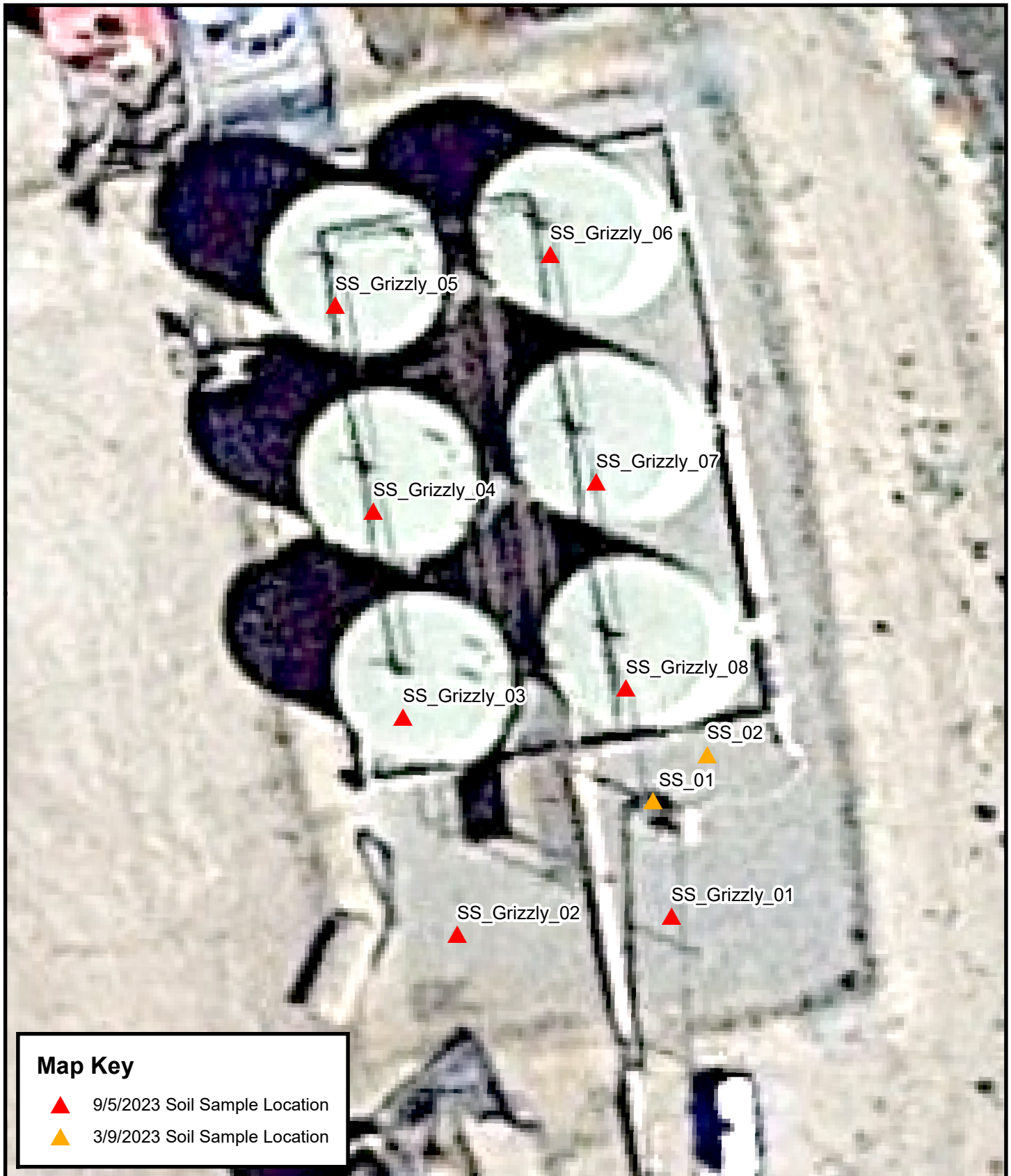


Date: 9/14/2023

Scale: 1:970

0 80 160 320 Feet

Coordinate System: WGS 1984 UTM Zone 13N



Map Key

- ▲ 9/5/2023 Soil Sample Location
- ▲ 3/9/2023 Soil Sample Location



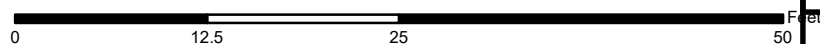
112 High Street
Buffalo, Wyoming 82834
855.684.5891

www.absarokasolutions.com

FEO.CO.0701.09

Grizzly #3-32H Soil Sample Location Map

Jackson County, Colorado



Coordinate System: WGS 1984 UTM Zone 13N



Date: 9/14/2023

Scale: 1:150