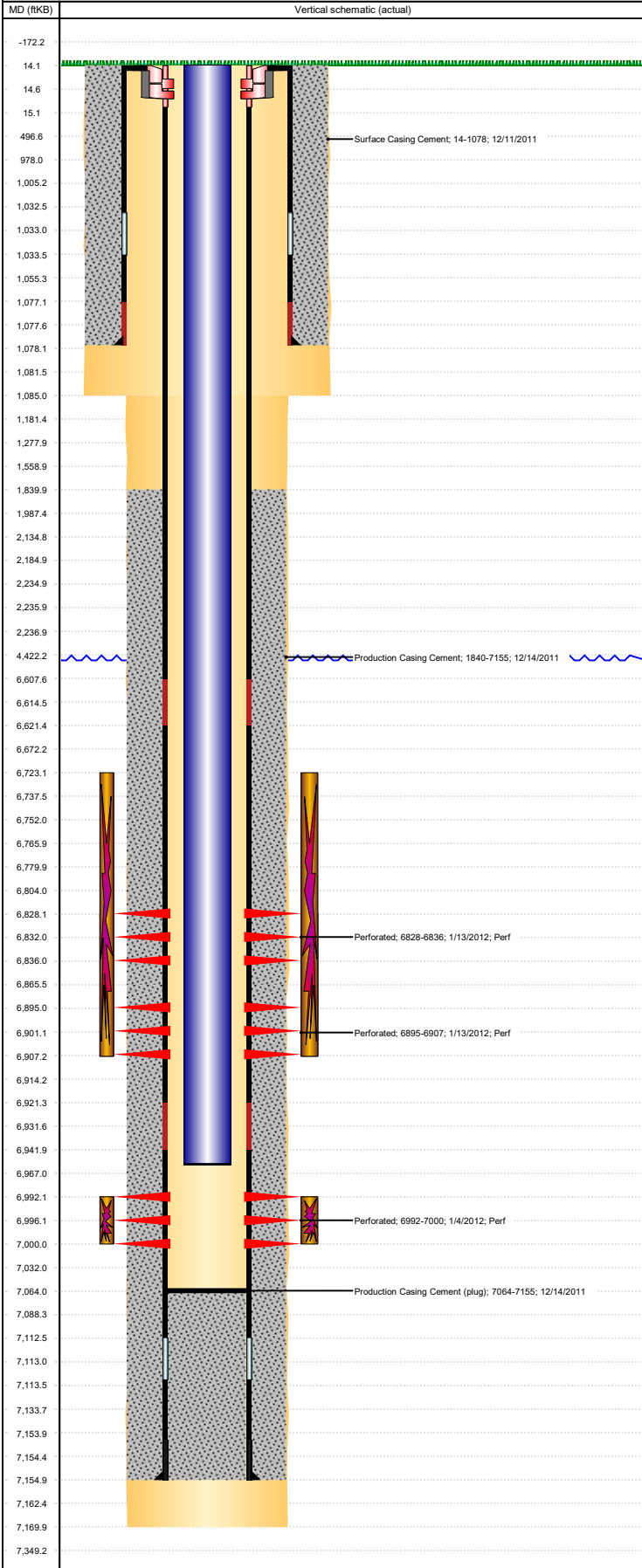




# P&A Wellbore For State

Well Name: WATKINS C12-23D

Land, Original Hole, 10/9/2023 12:22:51 PM



Well Header					
Surface UWI 0512334570	Business Unit Rockies	Gov Auth Dist	Prod Tree Loc Land		
Orig. KB to Gnd (ft) 14.00	Original Spud Date 12/10/2011	Abandon Date	Well Sub-Status PR	High...	N
Comment					

Surface Location (Congressional)								
Qtr 3 NW	Qtr 4 SE	Section 12	Twnshp 4	Twnsh... N	Range 64	Rng E... W	Latitude (°) 40.32344708 9	Longitude (°) -104.498648943

Wellbore Sections			
Section Des	Hole Size (in)	Act Top (ftKB)	Act Btm (ftKB)
SURFACE	12 1/4	14.0	1,085.0
PRODUCTION	7 7/8	1,085.0	7,170.0

Casing Strings						
Csg Des	Run Date	OD (in)	Wt/Len (lb/ft)	Grade	Top Depth (MD) (ftKB)	Set Depth (MD) (ftKB)
Surface	12/11/2011	8 5/8	24.00	J-55	14	1078
Production Casing	12/14/2011	4 1/2	11.60	M-80	14	7155

Cement			
Des	Start Date	Top (ftKB)	Btm (ftKB)
Surface Casing Cement	12/11/2011	14.0	1,078.0
Production Casing Cement	12/14/2011	1,840.0	7,155.0

Zone Statuses					
Zone Name	Status Date	Status	Fluid Type	Job	Prod Method
NIOBRARA	1/16/2012	PR		DRILLING/COMPLETION - ORIGINAL, 12/10/2011...	
CODELL	1/16/2012	PR		DRILLING/COMPLETION - ORIGINAL, 12/10/2011...	

Perforation Data					
Linked Zone	Explosive Type	Entered Shot Total	Top (ftKB)	Btm (ftKB)	Date
NIOBRARA, Original Hole	B	12	6,828.0	6,836.0	1/13/2012
NIOBRARA, Original Hole	C	12	6,895.0	6,907.0	1/13/2012
CODELL, Original Hole		32	6,992.0	7,000.0	1/4/2012

Stimulation Intervals			
Zone	Start Date	Top (ftKB)	Btm (ftKB)
NIOBRARA, Original Hole	1/13/2012	6,723.0	6,907.0
NIOBRARA, Original Hole	1/13/2012	6,828.0	6,907.0
CODELL, Original Hole	1/13/2012	6,992.0	7,000.0

Other In Hole					
Run Date	Des	Make	OD (in)	Top (ftKB)	Btm (ftKB)

Logs			
Date	Type	Depth Top (MD) (ftKB)	Btm (ftKB)
12/14/2011	Caliper/Comp. Density/Neutron/GR/SP/ML	2,600	7,147.0
12/14/2011	DIL/GR/SP/Caliper	1,078	7,167.0
1/3/2012	CBL/CCL/GR	1,360	7,063.0

Plug Back Total Depths			
Date	Type	Com	PBTD (ftKB)
12/14/2011	FLOAT COLLAR	FLOAT COLLAR	7,112
1/3/2012	FILL	DEPTH LOGGER	7,064