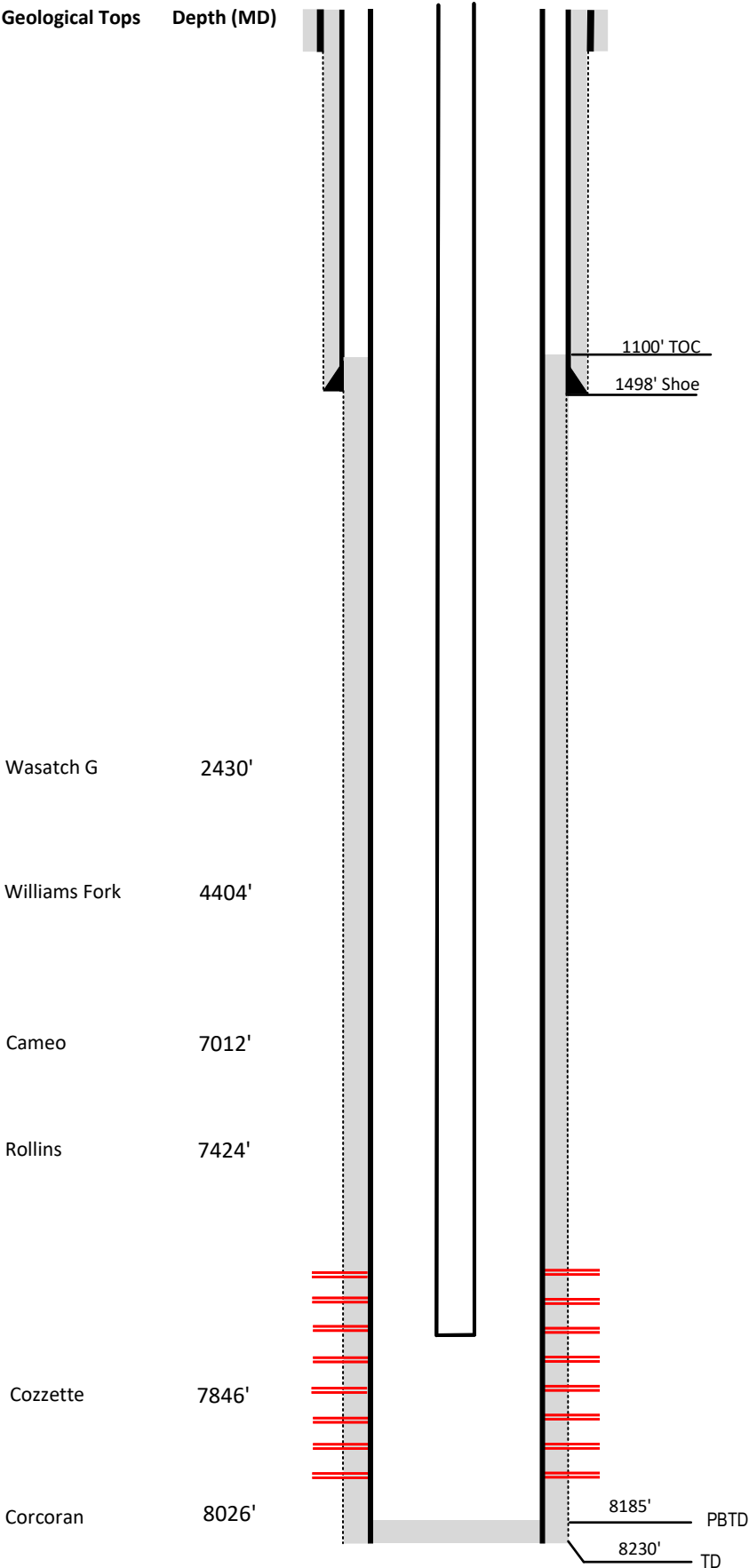


Laramie Energy

Current Wellbore Diagram

Not to scale

FEDERAL WELL: YES ☐ NO ☒



Well Name	Blackman #23-3
API	05-077-08986-00
Surface Location	NWSW Sec 14 T9S R97W
GPS Coordinates	39.273329, -107.855179
County, State	Mesa County, CO
Diagram Date	9/14/2023

Hole	26"
Conductor	16" @ 60'
Cement	Surface

Surface Hole	12.25 @ 1534'
Casing	8 5/8 32# J55 @ 1534'
Cement	420 sks
TOC	Surface

Production Hole	7.875 @ 8230'
Casing	4 1/2 11.6# I-80 @ 8230'
Cement	1590 sks
TOC	1100'

Tubing	2 3/8 J55 @ 7616'
--------	-------------------

Perforations	Top	Bottom
	6053'	8121'