

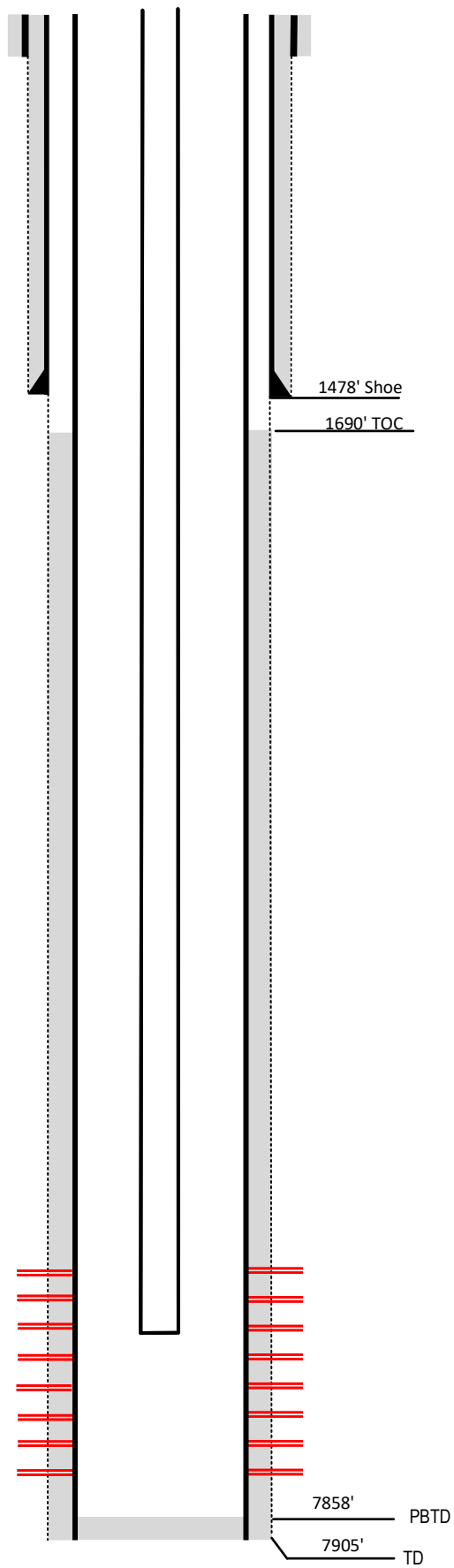
Laramie Energy

Current Wellbore Diagram

Not to scale

FEDERAL WELL: YES NO

Geological Tops Depth (MD)



Well Name Blackman #14-14
API 05-077-08968
Surface Location NWSW Sec 14 T9S R97W
GPS Coordinates 39.273333, -107.855147
County, State Mesa County, CO
Diagram Date 9/14/2023

Hole	26"
Conductor	16" @ 60'
Cement	Surface

Surface Hole	12.25 @ 1505'
Casing	8 5/8 32# J55 @ 1505'
Cement	420 sks
TOC	Surface

Production Hole	7.875 @ 7903'
Casing	4 1/2 11.6# I-80 @ 7903'
Cement	1345 sks
TOC	1690'

Tubing	2 3/8 J55 @ 7207'
---------------	-------------------

Perforations	Top	Bottom
	5648'	7703'

Williams Fork 4325'

Cameo 6842'

Rollins 7046'

Cozette 7468'

Corcoran 7649'

7858' PBTD

7905' TD