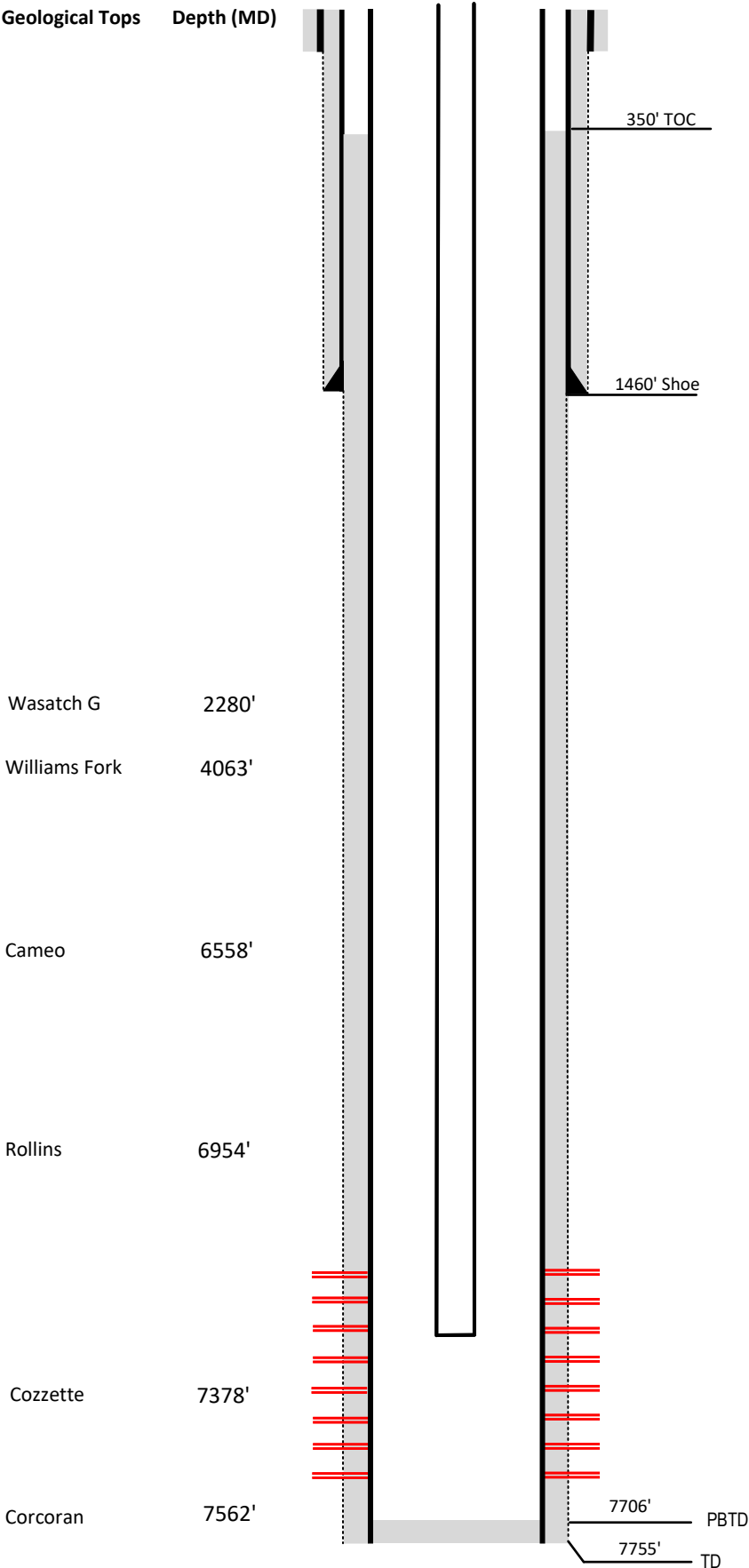


Laramie Energy

Current Wellbore Diagram

Not to scale

FEDERAL WELL: YES ☐ NO ☒



Well Name Blackman #14-12

API 05-077-08970

Surface Location NWSW Sec 14 T9S R97W

GPS Coordinates 39.273403, -107.855247

County, State Mesa County, CO

Diagram Date 9/14/2023

Hole 26"

Conductor 16" @ 40

Cement Surface

Surface Hole 12.25 @1490'

Casing 8 5/8 32# J55 @1490'

Cement 420 sks

TOC Surface

Production Hole 7.875 @ 7751'

Casing 4 1/2 11.6# I-80 @ 7751'

Cement 1090 sks

TOC 350'

Tubing 2 3/8 J55 @ 7116'

Perforations	Top	Bottom
	5548'	7649'