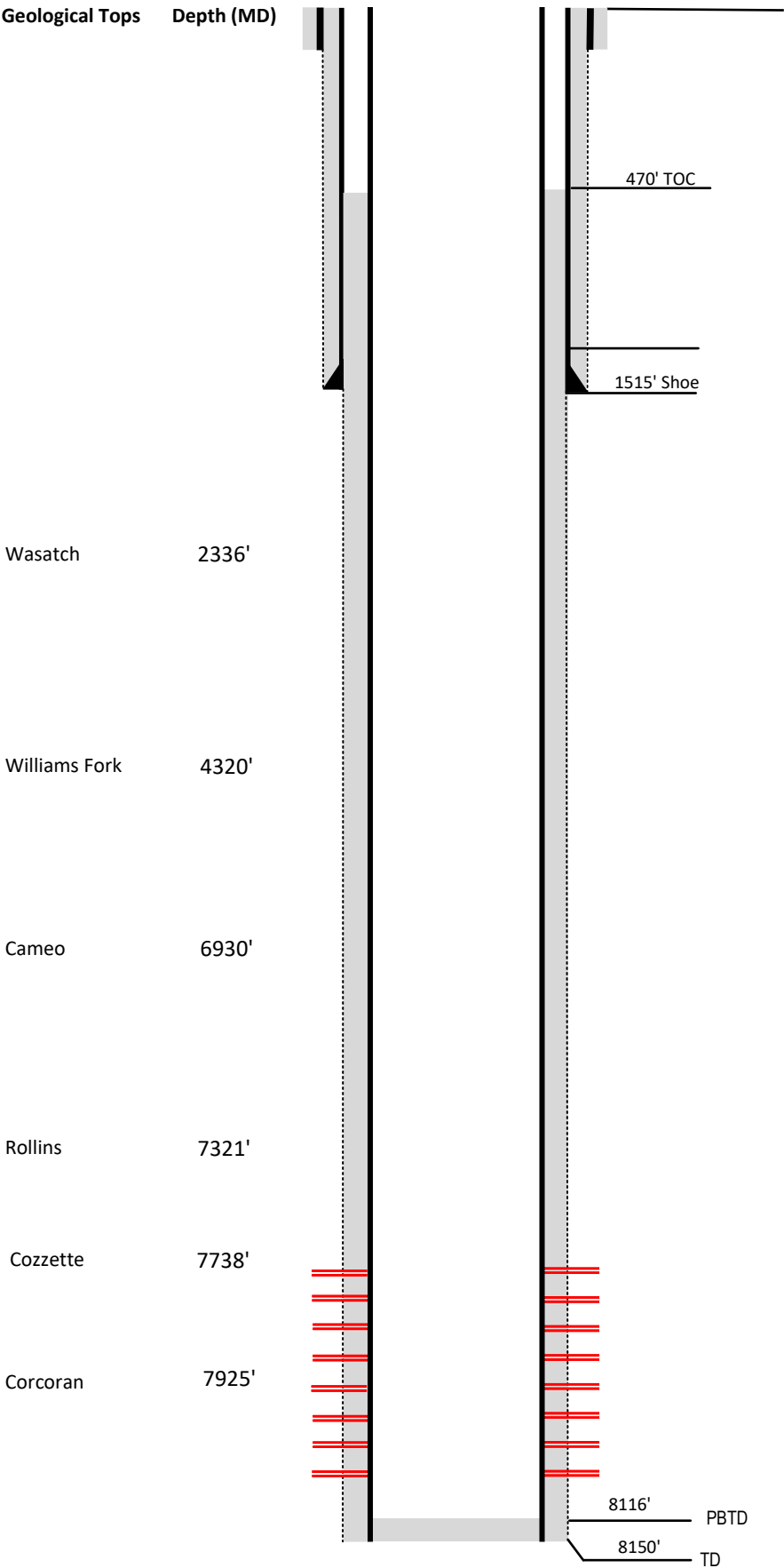


# Laramie Energy

## Current Wellbore Diagram

Not to scale

FEDERAL WELL: YES ☐ NO ☒



**Well Name**      Blackman #14-5

**API**      05-077-08972-00

**Surface Location**      NWSW Sec 14 T9S R97W

**GPS Coordinates**      39.273393/, -107.855177

**County, State**      Mesa County, CO

**Diagram Date**      9/14/2023

**Hole**      26"

**Conductor**      16" @ 40

**Cement**      Surface

**Surface Hole**      12.25 @1542'

**Casing**      8 5/8 32# J55 @1542'

**Cement**      470 sks

**TOC**      Surface

**Production Hole**      7.875 @ 8147'

**Casing**      4 1/2 11.6# I-80 @ 8147'

**Cement**      1390 sks

**TOC**      470'

**Tubing**      2 3/8 J55 @ 7503

**Perforations**      **Top**      **Bottom**

5929'      8009'