

---

# INTERIM RECLAMATION PLAN

**Wavetech  Helium, Inc.**

**1 Wavetech Hillman Family Trust 43-15**

Sec. 15 T12S R43W (NE/4 SE/4)

Cheyenne County, Colorado

Surface: Fee

Submitted as an accompaniment to the Form 2A Application and  
Consistent with the requirements of Rule 1003.

May 19, 2023

## **Wavetech Helium, Inc. Cheyenne County, Colorado**

### **Interim Reclamation Plan**

#### **Project Summary:**

Wavetech Helium, Inc.'s ("Wavetech's") proposed 1 Wavetech Hillman Family Trust 43-15 "Location" is in Sec. 15 T12S R43W in Cheyenne County, Colorado. Wavetech plans to drill and test this conventional well which will produce helium containing natural gas, water and possibly oil. All gas production will go directly to the existing Ladder Creek Pipeline gathering system at the tie-in point in Sec. 15 T12S R43W (SE/4 SE/4). The Ladder Creek Pipeline is operated by Tumbleweed Midstream. The gas processing facility will be on lands outside of this Oil and Gas Development Plan. This well will be drilled, perforated, and tested. The proposed location is fee surface and fee minerals with a total pad disturbance of  $\pm 3.5$  acres. The graded site elevation is expected to be approximately 4,127'. No federal surface or minerals are involved in this project. All operations would be conducted in compliance with all federal, state, and local applicable laws, rules, and regulations.

#### **Plan**

Interim reclamation is key to topsoil conservation and stabilization and lays the groundwork for success final reclamation of the restoration of the natural vegetative community, hydrology, and wildlife habitats. Best Management Practices (BMPs), where applicable, mixed with other reclamation measures ensure successful final reclamation.

#### **General Interim Reclamation Guidelines**

**The general interim reclamation guidelines will apply to all linear projects; access roads, pipelines, flowlines, etc. and to all wellpads and production pads.**

In areas that are disturbed by construction, topsoil will be stripped and stockpiled near the site. All brush, limbs, and other woody material will be stockpiled separately from the topsoil. Soil materials will be managed so that erosion and sediment transport are minimized. Nearby drainages will be protected by appropriate measures.

The salvaging and spreading of topsoil will not be performed when the ground or topsoil is frozen or too wet to adequately support construction equipment. If such equipment creates ruts, in excess of four inches deep, the soil will be deemed too wet.

All earthwork for interim reclamation will be completed within six months of well completion or plugging (weather permitting).

In areas that will not be drill-seeded, the seed mix will be broadcast-seeded at twice the application rate shown and covered 0.25 to 0.5 inches deep with a harrow or drag bar or will be broadcast-seeded into imprints, such as fresh dozer cleat marks.

Initial seedbed preparation will consist of backfilling, leveling, and ripping all compacted areas. Final seedbed preparation will consist of contour cultivating to a depth of four to six inches within 24 hours prior to seeding. Seeding will be conducted no more than 24 hours following completion of final seedbed preparation. A certified weed-free seed as agreed upon with the private surface owner to meet reclamation standards will be used. The seed mix will be used on all disturbed surfaces.

To help mitigate the contrast of recontoured slopes, reclamation will include measures to feather cleared lines of vegetation and to save and redistribute cleared trees, debris, and rock over recontoured cut/fill slopes.

Revegetation will be accomplished by planting a seed mix as agreed upon by the private surface owner. The seed mix will include a portion of vegetation occurring in the surrounding natural vegetation.

No seeding will occur from May 15 to September 15. Fall seeding is preferred and will be conducted after September 15 and prior to ground freezing. Spring seeding will be conducted after the frost leaves the ground and no later than May 15.

Annual or noxious weeds shall be controlled on all disturbed areas as directed by the private surface owner. An intensive weed monitoring and control program will be implemented beginning the first growing season after interim reclamation. Noxious weeds that have been identified during monitoring will be promptly treated and controlled. All reclamation equipment will be cleaned prior to use to reduce the potential for introduction of noxious weeds or other undesirable non-native species. The operator will coordinate all weed and insect control measures with state and/or local management agencies.

Reclaimed areas will be monitored annually. Actions will be taken to ensure that reclamation standards are met as quickly as reasonably practical.

**1 Wavetech Hillman Family Trust 43-15:**

A wellpad, access road and pipeline are planned for this Location. Production facilities will be located on location per landowner agreement.

**Wellpad/Access Road/Pipeline**

- During the drilling of the well, there will be minimal disturbance. The access road will be minimally upgraded.
- To negate surface disturbance 12" x 12" test pits will be dug on the northwestern and southwestern corners of the wellpad. The pits will be dug in a manner prior to wellpad construction so that will not require any compaction post construction.
- During wellpad construction topsoil will not be piled higher than 3 to 5 feet high and slopes of the stockpiles should not exceed 2:1 (horizontal:vertical) to minimize erosion potential and facilitate interim stabilization. Topsoil material will be placed on the western side of the cleared pad and will be approximately 1,791 CY.
- Following the drilling and completion activities, the well pad will be reduced, thus minimizing the area of disturbance for the production life of the well. The pad will be recontoured, subsoil will be applied, and any topsoil recovered during active construction will be applied over the subsoil. The reduced area

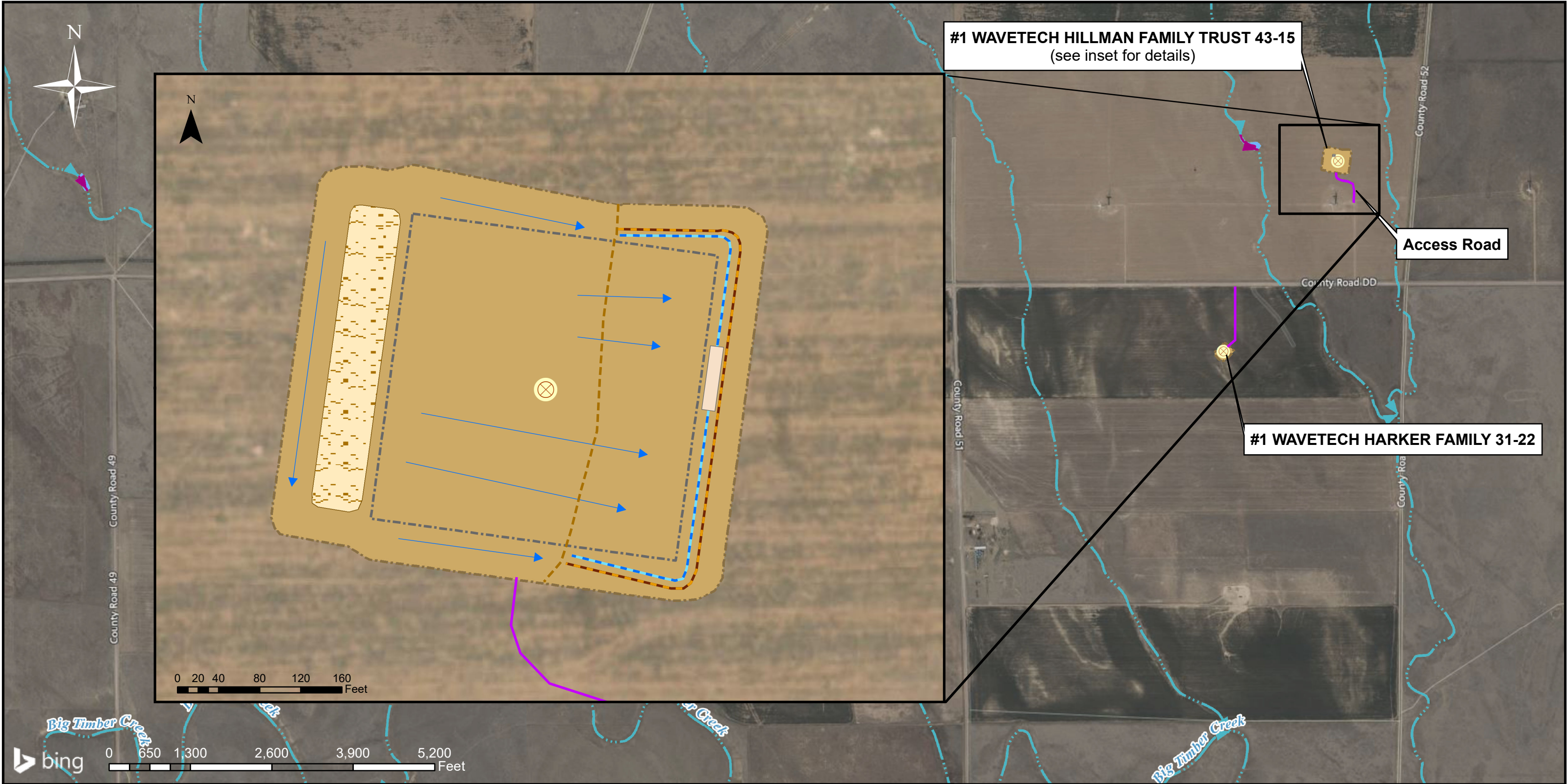
will be stabilized with seed, hydro-seed, bonded fiber matrix, mulch, etc. as deemed appropriate for the site. Please see Production/Interim Reclamation Drawing.

- The portion of the wellpad and access road needed for ongoing operations will be graveled and the access road will be crowned and ditched. Any gravel not needed for interim reclaimed will be removed from the road and wellpad.
- Well production equipment, such as tanks, treaters, separators, vents, electrical boxes, etc. will be placed on location to permit maximum interim reclamation of disturbed areas. If equipment is found to interfere with the proper interim reclamation of disturbed areas, the equipment may be moved so proper recontouring and revegetation can occur.
- Any gathering line corridors will be contained within the working pad surface and will be reclaimed leaving only operational areas where necessary. Topsoil will be reapplied during interim reclamation to promote regrowth of vegetation. The wellpad which includes the gathering lines will be recontoured, topsoil reapplied, and the reduced area stabilized with seed, hydro-seed, bonded fiber matrix, mulch, etc. Continual interim reclamation stabilization controls will be used during both active and post construction until permanent vegetation is established.
- Initial disturbance of the Location will be 3.5 acres which will be reduced to 1.1 acres post drilling. Please see the attached drawings.

There are no known weed infestations as this sight.


**Best Management Practices for Interim Reclamation:**

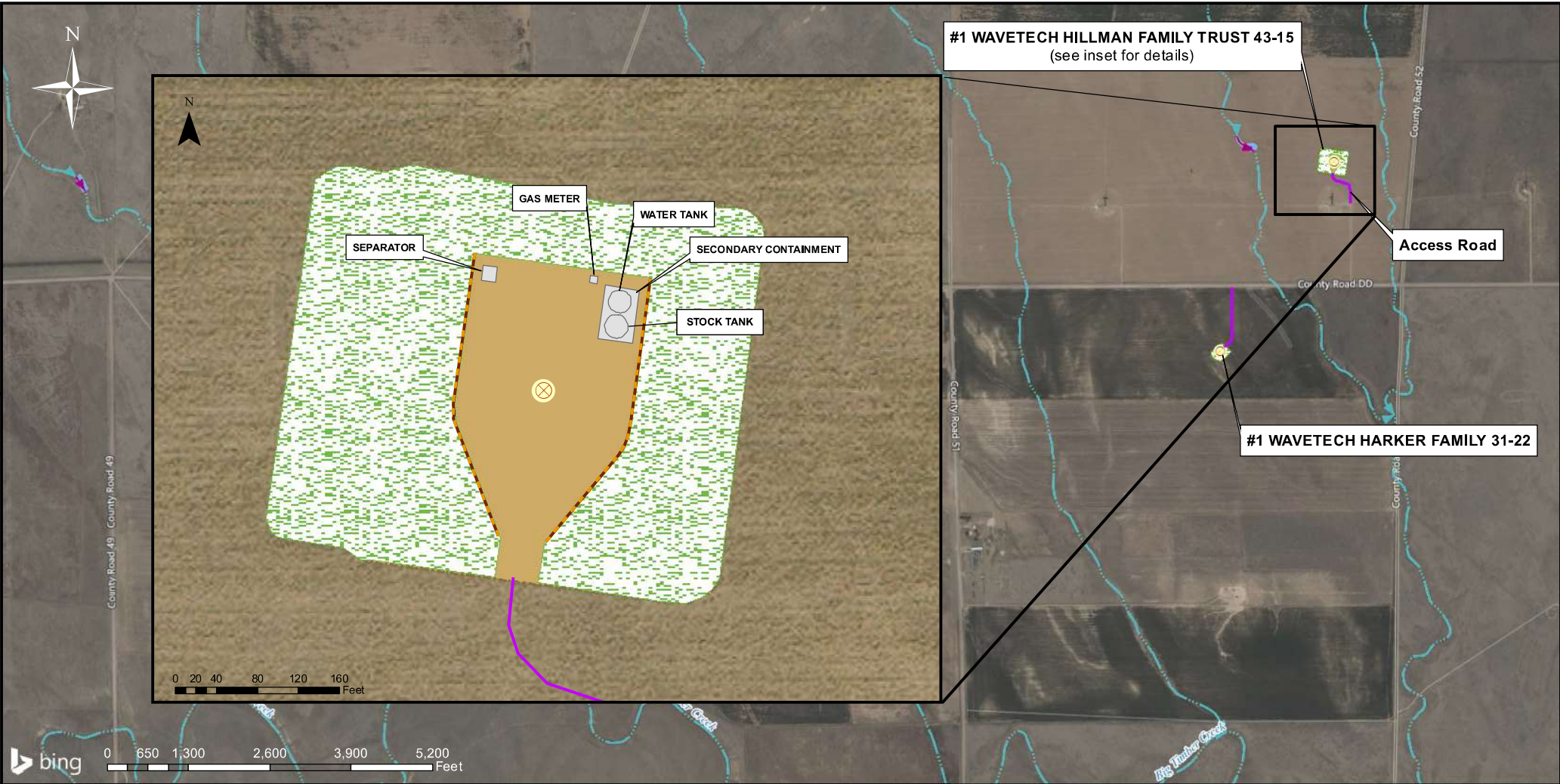
- Silt Fence and Straw Wattles: A silt fence and/or straw wattles may be installed on portions of the location to control run-on to the pad, and any stormwater flow to runoff the pad uncontrolled.
- Earthen berms will be constructed on the northeastern, eastern and southeastern portions of the wellpad to control sediment migration. No uncontrolled stormwater will be directed off the pad.
- A sediment trap will be constructed on the eastern side of the pad. Diversion ditches will be graded to direct stormwater to the sediment trap, where sediment will settle, and water will be allowed to evaporate.
- A diversion ditch will be constructed around the northeastern, eastern and southeastern portions of the wellpad. The diversion ditch will be utilized around the perimeter of the pad to control run-on (keep off-location sediment from coming on to the pad which is typically very minimal) and to control sediment from running off the location during construction and interim stabilization.
- Culverts will be installed along Cheyenne County Roads as directed by Cheyenne County. No culverts are anticipated at this time. If needed, minimum of 18" or size appropriate, culverts will be placed along the road to slow/filter any stormwater runoff from the road itself.
- Rock Rip-Rap: Where culverts are installed, rock rip-rap placed on both sides of the culverts to slow/filter any stormwater runoff from the road itself.
- Following the drilling and completion activities, the well pad will be reduced, thus minimizing the area of disturbance for the production life of the well. The pad will be recontoured, subsoil will be applied, and any topsoil recovered during active construction will be applied over the subsoil. The reduced area will be stabilized with seed, hydro-seed, bonded fiber matrix, mulch, etc. as deemed appropriate for the site. Please see attached drawings.
- If weeds appear, an aggressive weed management program will be implemented. The program will depend on *if* weeds appear and volume and type.
- A seed mix will be approved by private surface owner prior to interim reclamation.
- Wavetech will fence the entire location with wildlife friendly barb wire, per landowner requirements, to keep ungulates out of the Location.
- All earthwork for interim reclamation will be completed within six months of well completion or plugging. Reclamation will be completed in the fall if possible; after September 15 and prior to ground freezing. If spring seeding is necessary, seeding will be conducted after the frost leaves the ground and no later than May 15.
- All interim reclaimed areas will be recontoured as much as possible to match the initial surrounding topography while maintaining safe working areas.



MAP FEATURES

- |  |                   |   |                            |
|--|-------------------|---|----------------------------|
|  | Disturbed Area    |  | Diversion Ditch            |
|  | Production Area   |  | Cut/Fill                   |
|  | Topsoil Stockpile |  | Surface Flow Direction     |
|  | Sediment Trap     |  | Perennial Stream           |
|  | Access Road       |  | Intermittent Stream        |
|  | Earthen Berm      |  | Well Head Surface Location |

Wavetech Helium	
#1 Wavetech Hillman Family Trust 43-15 Stormwater Management Plan Site-Specific Diagram - Initial Construction	
Section 15, Township 12S, Range 43W, Cheyenne County	
	DRAWN BY: KT (Aquionix)
	DATE DRAWN: 10/26/2022
	MAP SCALE: 1:18,044
	COORD. SYSTEM: WGS_1984_Web_Mercator_Auxiliary_Sphere
REVISION	DATE



MAP FEATURES

- Disturbed Area
- Reclaimed Area
- Production Equipment
- Well Head Surface Location
- Access Road
- Earthen Berm
- Perennial Stream
- Intermittent Stream

REVISION

DATE

Wavetech Helium

#1 Wavetech Hillman Family Trust 43-15  
Stormwater Management Plan  
Site-Specific Diagram - Interim Reclamation

Section 15, Township 12S, Range 43W, Cheyenne County

Aquionix  
E.I.C. SERVICES

DRAWN BY: KT (Aquionix)

DATE DRAWN: 10/26/2022

MAP SCALE: 1:18,044

COORD. SYSTEM: WGS\_1984\_Web\_Mercator\_Auxiliary\_Sphere



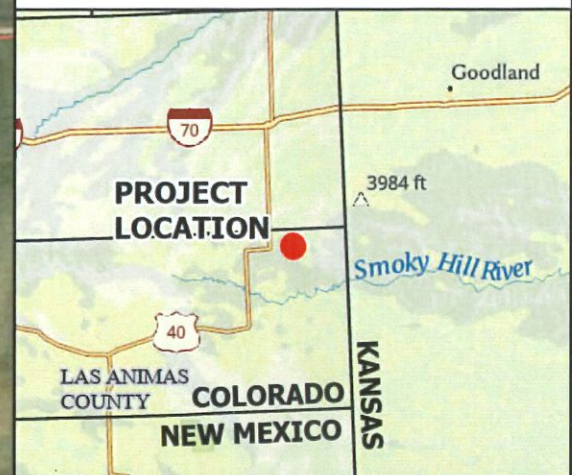
## Legend

- Proposed Access Road
- Proposed Oil and Gas Location
- Proposed Working Pad Surface
- One Mile Buffer
- 39--Satanta-Colby complex

Source: NRCS July 2020

Date Saved: 12/27/2022 10:25 AM

0 0.25 0.5  
Miles



Wavetech Energy, Inc.  
1 Wavetech Hillman Family Trust 43-15  
Sec. 15 T12S R43W (NE/4 SE/4)  
Cheyenne County, Colorado  
Surface: Fee  
SOILS

Coordinate System: NAD 83 StatePlane  
Colorado South FIPS 0503 Feet



Prepared By:

