

UNGRADED ELEVATION: 4128.2'  
FINAL ELEVATION: 4127.3'  
AREA OF DISTURBANCE: 3.5± ACRES  
AREA OF WORKING PAD SURFACE: 2.1± ACRES

#1 WAVETECH HILLMAN FAMILY TRUST 43-15

N

500

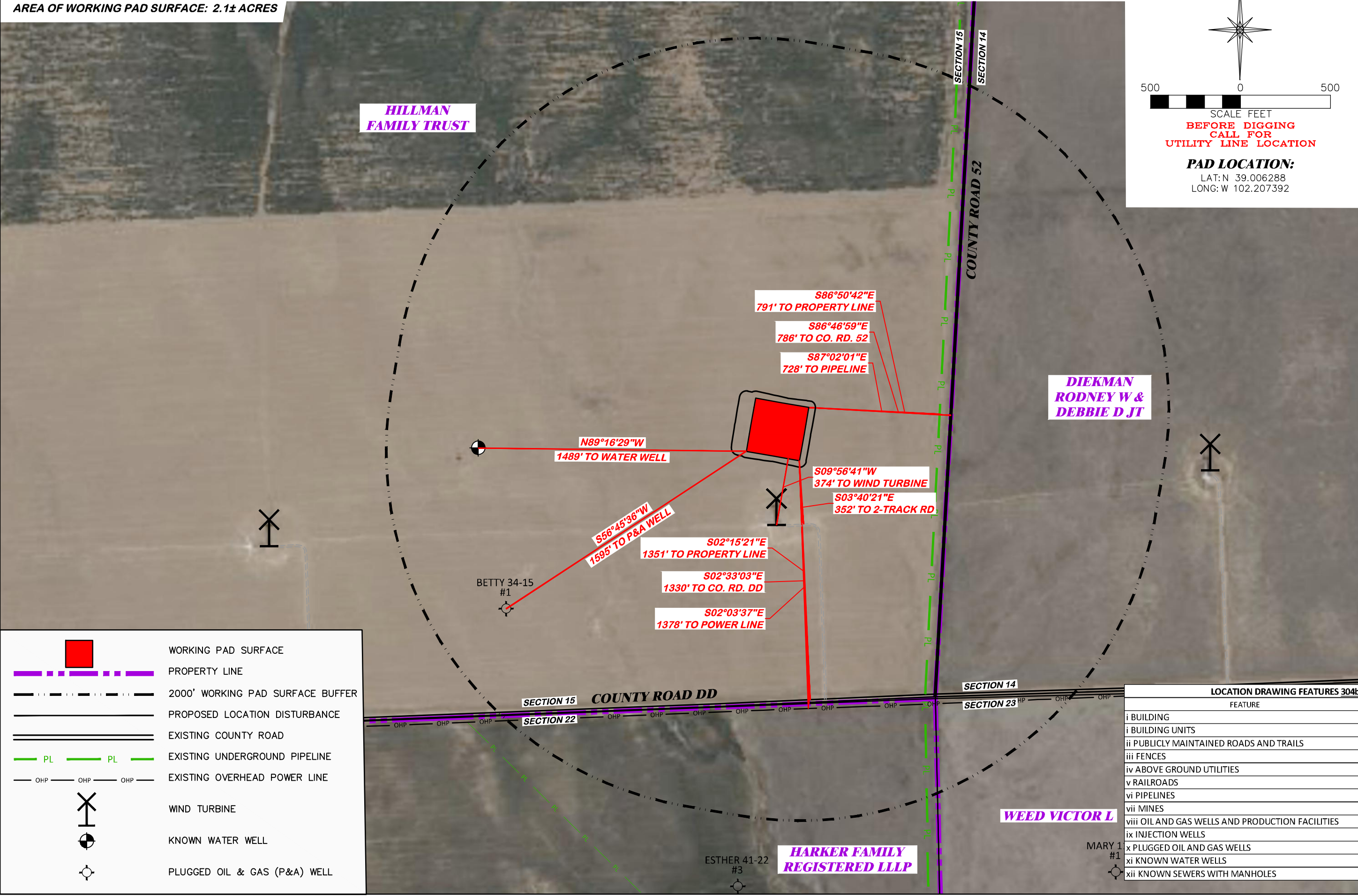
0

500

SCALE FEET

BEFORE DIGGING  
CALL FOR  
UTILITY LINE LOCATION

PAD LOCATION:  
LAT: N 39.006288  
LONG: W 102.207392



WORKING PAD SURFACE

PROPERTY LINE

2000' WORKING PAD SURFACE BUFFER

PROPOSED LOCATION DISTURBANCE

EXISTING COUNTY ROAD

PL

PL

PL

EXISTING UNDERGROUND PIPELINE

OHP

OHP

OHP

EXISTING OVERHEAD POWER LINE

X

I

W

WIND TURBINE

W

W

KNOWN WATER WELL

W

W

PLUGGED OIL & GAS (P&A) WELL

LOCATION DRAWING

WAVETECH HELIUM, INC.  
#1 WAVETECH HILLMAN FAMILY TRUST 43-15  
NESE, SECTION 15, T. 12 S., R. 43 W., 6th P.M.,  
CHEYENNE COUNTY, COLORADO

DRG

RIFFIN & ASSOCIATES, INC.

(307) 862-5028

1414 ELK ST., ROCK SPRINGS, WY 82901

DRAWN: 8/18/22 - JMB

SCALE: 1" = 500'

REVISED: 11/28/22-DWB

DRG JOB No. 22263

WELL NAME CHANGE

304b(7)A LOC AERIAL

LOCATION DRAWING FEATURES 304b(7)A	
FEATURE	DISTANCE
i BUILDING	5280'
i BUILDING UNITS	5280'
ii PUBLICLY MAINTAINED ROADS AND TRAILS	AS SHOWN
iii FENCES	5280'
iv ABOVE GROUND UTILITIES	AS SHOWN
v RAILROADS	5280'
vi PIPELINES	728' E
vii MINES	5280'
viii OIL AND GAS WELLS AND PRODUCTION FACILITIES	5280'
ix INJECTION WELLS	5280'
x PLUGGED OIL AND GAS WELLS	1595' SW
xi KNOWN WATER WELLS	1489' W
xii KNOWN SEWERS WITH MANHOLES	5280'