

Cheyenne County, Colorado

3—Ascalon sandy loam, 0 to 3 percent slopes

Map Unit Setting

National map unit symbol: 2swl3

Elevation: 3,870 to 5,960 feet

Mean annual precipitation: 12 to 16 inches

Mean annual air temperature: 46 to 57 degrees F

Frost-free period: 135 to 160 days

Farmland classification: Farmland of statewide importance

Map Unit Composition

Ascalon and similar soils: 85 percent

Minor components: 15 percent

Estimates are based on observations, descriptions, and transects of the mapunit.

Description of Ascalon

Setting

Landform: Interfluves

Landform position (two-dimensional): Summit

Down-slope shape: Linear

Across-slope shape: Linear

Parent material: Wind-reworked alluvium and/or calcareous sandy eolian deposits

Typical profile

Ap - 0 to 6 inches: sandy loam

Bt1 - 6 to 12 inches: sandy clay loam

Bt2 - 12 to 19 inches: sandy clay loam

Bk - 19 to 35 inches: sandy clay loam

C - 35 to 80 inches: sandy loam

Properties and qualities

Slope: 0 to 3 percent

Depth to restrictive feature: More than 80 inches

Drainage class: Well drained

Runoff class: Low

Capacity of the most limiting layer to transmit water

(Ksat): Moderately high to high (0.60 to 2.00 in/hr)

Depth to water table: More than 80 inches

Frequency of flooding: None

Frequency of ponding: None

Calcium carbonate, maximum content: 10 percent

Maximum salinity: Nonsaline to very slightly saline (0.1 to 2.0 mmhos/cm)

Sodium adsorption ratio, maximum: 1.0

Available water supply, 0 to 60 inches: Moderate (about 7.7 inches)

Interpretive groups

Land capability classification (irrigated): 3e

Land capability classification (nonirrigated): 4c

Hydrologic Soil Group: B

Ecological site: R067BY024CO - Sandy Plains

Hydric soil rating: No

Minor Components

Olnešt

Percent of map unit: 10 percent

Landform: Interfluves

Landform position (two-dimensional): Summit

Landform position (three-dimensional): Tread

Down-slope shape: Linear

Across-slope shape: Linear

Ecological site: R067BY024CO - Sandy Plains

Hydric soil rating: No

Vona

Percent of map unit: 5 percent

Landform: Interfluves

Landform position (two-dimensional): Summit

Down-slope shape: Linear

Across-slope shape: Linear

Ecological site: R067BY024CO - Sandy Plains

Hydric soil rating: No

Data Source Information

Soil Survey Area: Cheyenne County, Colorado

Survey Area Data: Version 24, Sep 1, 2022

Report — Rangeland Productivity and Plant Composition						
Cheyenne County, Colorado						
Map unit symbol and soil name	Ecological site	Total dry-weight production			Characteristic vegetation	Rangeland composition
		Favorable year	Normal year	Unfavorable year		
		<i>Lb/ac</i>	<i>Lb/ac</i>	<i>Lb/ac</i>		<i>Pct</i>
3—Ascalon sandy loam, 0 to 3 percent slopes						
Ascalon	R067BY024CO: Sandy Plains	2,200	1,650	800	Prairie sandreed	20
					Little bluestem	15
					Needleandthread	15
					Sideoats grama	15
					Sand bluestem	5
					Sand dropseed	—
					Western wheatgrass	—
					Blue grama	—

Cheyenne County, Colorado

1422—Goshen silt loam, rarely flooded

Map Unit Setting

National map unit symbol: 2v9g6

Elevation: 2,850 to 5,100 feet

Mean annual precipitation: 14 to 24 inches

Mean annual air temperature: 46 to 57 degrees F

Frost-free period: 130 to 190 days

Farmland classification: Prime farmland if irrigated

Map Unit Composition

Goshen, rarely flooded, and similar soils: 98 percent

Minor components: 2 percent

Estimates are based on observations, descriptions, and transects of the mapunit.

Description of Goshen, Rarely Flooded

Setting

Landform: Drainageways, swales

Landform position (two-dimensional): Footslope, toeslope

Landform position (three-dimensional): Base slope

Down-slope shape: Linear, concave

Across-slope shape: Concave, linear

Parent material: Slope alluvium

Typical profile

Ap - 0 to 13 inches: silt loam

Bt - 13 to 32 inches: silty clay loam

Bk - 32 to 48 inches: silt loam

C - 48 to 79 inches: silt loam

Properties and qualities

Slope: 0 to 2 percent

Depth to restrictive feature: More than 80 inches

Drainage class: Well drained

Runoff class: Low

Capacity of the most limiting layer to transmit water

(Ksat): Moderately high (0.20 to 0.60 in/hr)

Depth to water table: More than 80 inches

Frequency of flooding: Rare

Frequency of ponding: None

Calcium carbonate, maximum content: 10 percent

Maximum salinity: Nonsaline to very slightly saline (0.0 to 2.0 mmhos/cm)

Available water supply, 0 to 60 inches: High (about 10.6 inches)

Interpretive groups

Land capability classification (irrigated): 1

Land capability classification (nonirrigated): 3c

Hydrologic Soil Group: C
Ecological site: R072XY117KS - Tableland Swale
Hydric soil rating: No

Minor Components

Lodgepole

Percent of map unit: 1 percent
Landform: Playas
Landform position (two-dimensional): Toeslope
Landform position (three-dimensional): Base slope
Down-slope shape: Concave
Across-slope shape: Concave
Ecological site: R072XY115KS - Closed Upland Depression
Hydric soil rating: Yes

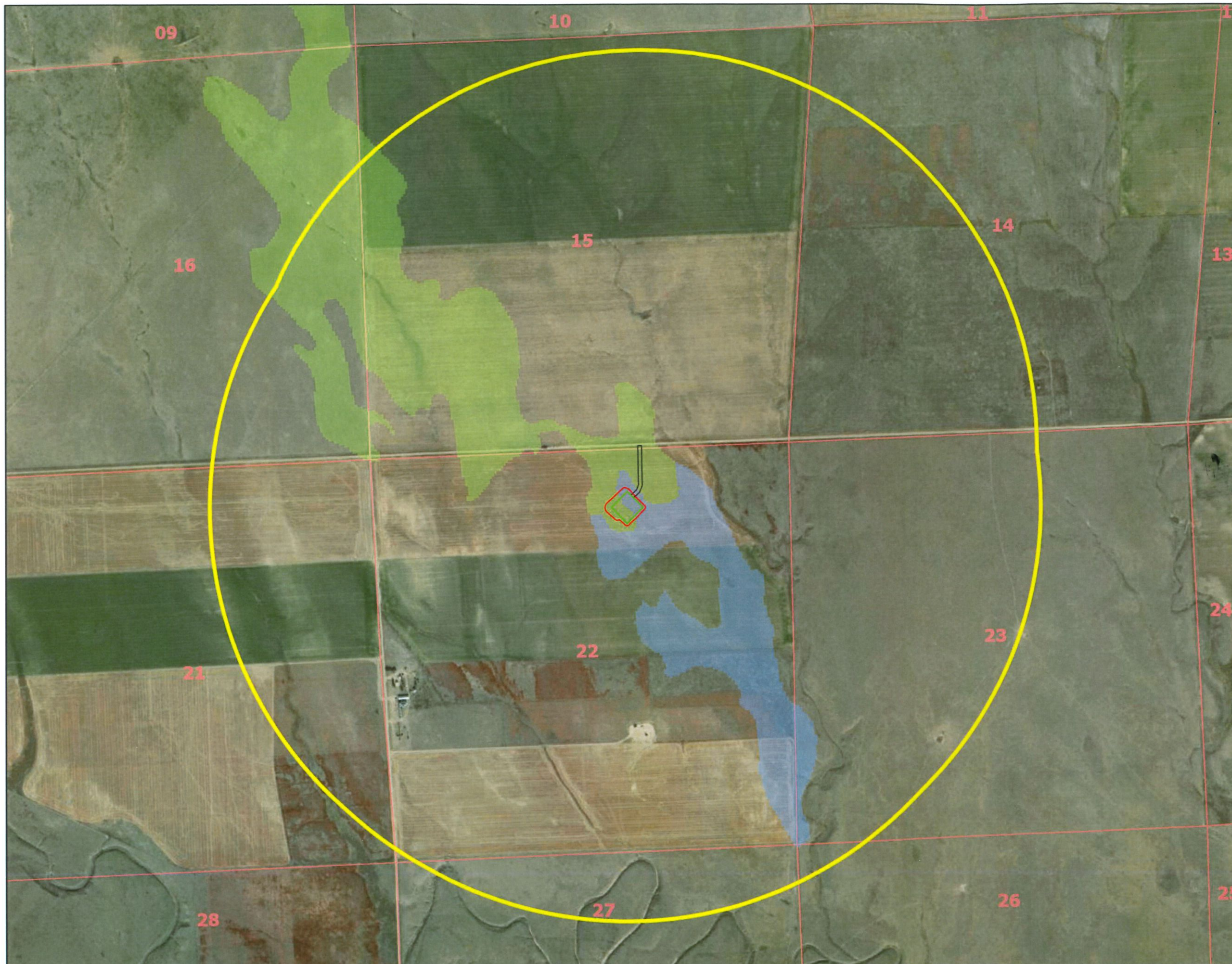
Pleasant

Percent of map unit: 1 percent
Landform: Playas
Landform position (two-dimensional): Toeslope
Landform position (three-dimensional): Base slope
Down-slope shape: Concave
Across-slope shape: Concave
Ecological site: R072XY115KS - Closed Upland Depression
Hydric soil rating: Yes

Data Source Information

Soil Survey Area: Cheyenne County, Colorado
Survey Area Data: Version 24, Sep 1, 2022

Report — Rangeland Productivity and Plant Composition						
Cheyenne County, Colorado						
Map unit symbol and soil name	Ecological site	Total dry-weight production			Characteristic vegetation	Rangeland composition
		Favorable year	Normal year	Unfavorable year		
		<i>Lb/ac</i>	<i>Lb/ac</i>	<i>Lb/ac</i>		<i>Pct</i>
1422—Goshen silt loam, rarely flooded						
Goshen, rarely flooded	R072XY117KS: Tableland Swale	3,000	2,500	2,000	Grass	94
					Forb	5
					Shrub	1



Legend

- Proposed Access Road
- Proposed Oil and Gas Location
- Proposed Working Pad Surface
- One Mile Buffer
- 3--Ascalon sandy loam
- 1422--Goshen silt loam

Source: NRCS July 2020

Date Saved: 12/27/2022 11:36 AM

0 0.25 0.5 Miles



Wavetech Energy, Inc.
1 Wavetech Harker-Family 31-22
Sec. 22 T12S R43W (NW/4 SE/4)
Cheyenne County, Colorado
Surface: Fee
SOILS

Coordinate System: NAD 83 StatePlane
Colorado South FIPS 0503 Feet



Prepared By:

