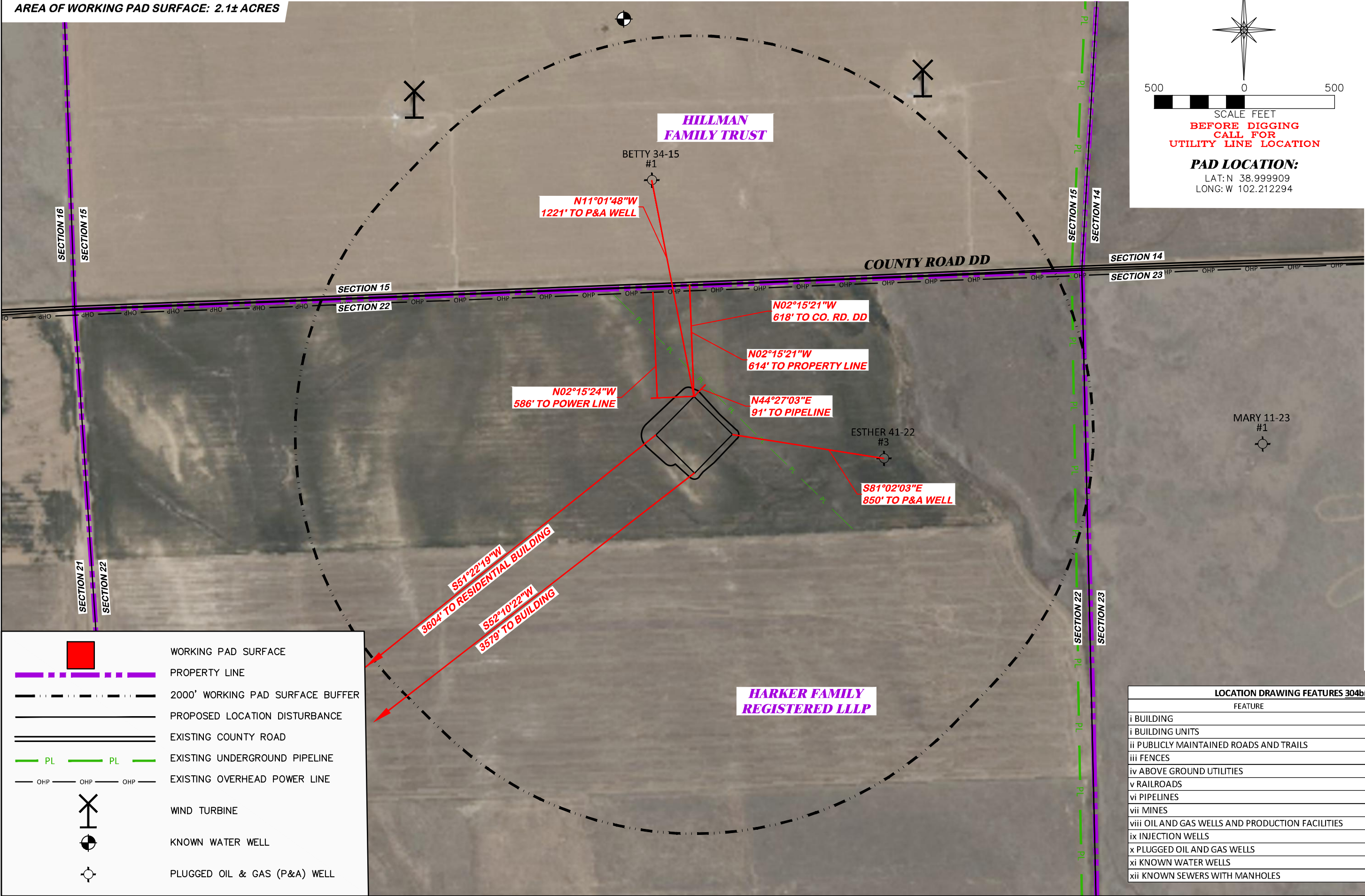


UNGRADED ELEVATION: 4119.5'
FINAL ELEVATION: 4118.9'
AREA OF DISTURBANCE: 3.7± ACRES
AREA OF WORKING PAD SURFACE: 2.1± ACRES

#1 WAVETECH HARKER-FAMILY 31-22



N

500 0 500

SCALE FEET

BEFORE DIGGING
CALL FOR
UTILITY LINE LOCATION

PAD LOCATION:
LAT: N 38.999909
LONG: W 102.212294

LOCATION DRAWING

WAVETECH HELIUM, INC.
#1 WAVETECH HARKER-FAMILY 31-22
NWNE, SECTION 22, T. 12 S., R. 43 W., 6th P.M.,
CHEYENNE COUNTY, COLORADO

DRG RIFFIN & ASSOCIATES, INC.
1414 ELK ST., ROCK SPRINGS, WY 82901
(307) 962-5028

DRAWN: 7/26/22 - JMB
REVISED: 12/2/22-DWB
COGCC REVISIONS

SCALE: 1" = 500'

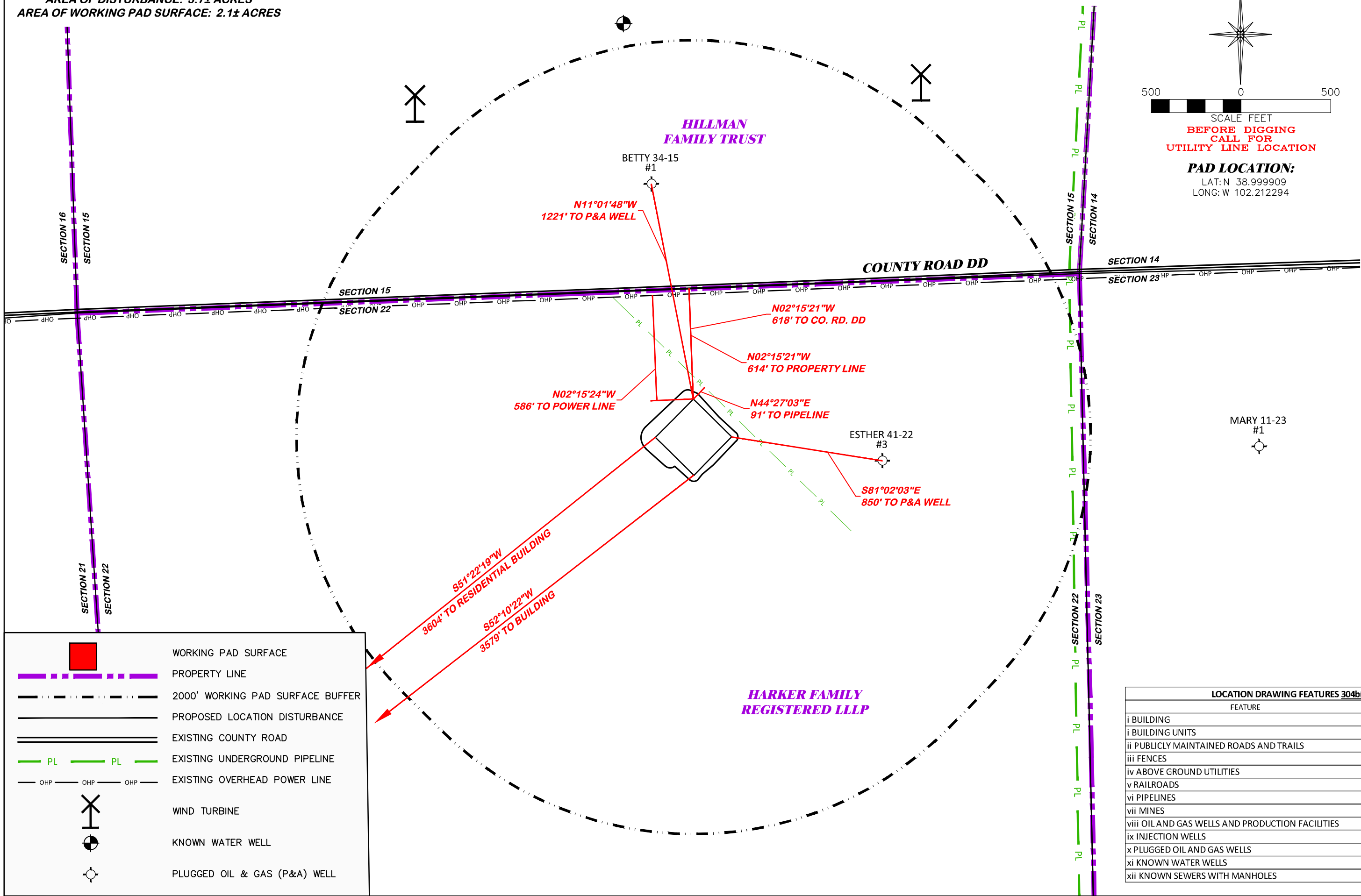
DRG JOB No. 22269

304b(7)A LOC AERIAL

LOCATION DRAWING FEATURES 304b(7)A	
FEATURE	DISTANCE
i BUILDING	3579' SW
i BUILDING UNITS	3604' SW
ii PUBLICLY MAINTAINED ROADS AND TRAILS	618' N
iii FENCES	5280'
iv ABOVE GROUND UTILITIES	586' N
v RAILROADS	5280'
vi PIPELINES	91' NE
vii MINES	5280'
viii OIL AND GAS WELLS AND PRODUCTION FACILITIES	2836' S
ix INJECTION WELLS	5280'
x PLUGGED OIL AND GAS WELLS	850' E
xi KNOWN WATER WELLS	2128' N
xii KNOWN SEWERS WITH MANHOLES	5280'

UNGRADED ELEVATION: 4119.5'
FINAL ELEVATION: 4118.9'
AREA OF DISTURBANCE: 3.7± ACRES
AREA OF WORKING PAD SURFACE: 2.1± ACRES

#1 WAVETECH HARKER-FAMILY 31-22



500

0

500

SCALE FEET

BEFORE DIGGING
CALL FOR
UTILITY LINE LOCATION

PAD LOCATION:
LAT: N 38.999909
LONG: W 102.212294

WORKING PAD SURFACE

PROPERTY LINE

2000' WORKING PAD SURFACE BUFFER

PROPOSED LOCATION DISTURBANCE

EXISTING COUNTY ROAD

PL

PL

PL

EXISTING UNDERGROUND PIPELINE

OHP

OHP

OHP

EXISTING OVERHEAD POWER LINE

WIND TURBINE

KNOWN WATER WELL

PLUGGED OIL & GAS (P&A) WELL

LOCATION DRAWING FEATURES 304b(7)A	
FEATURE	DISTANCE
i BUILDING	3579' SW
i BUILDING UNITS	3604' SW
ii PUBLICLY MAINTAINED ROADS AND TRAILS	618' N
iii FENCES	5280'
iv ABOVE GROUND UTILITIES	586' N
v RAILROADS	5280'
vi PIPELINES	91' NE
vii MINES	5280'
viii OIL AND GAS WELLS AND PRODUCTION FACILITIES	2836' S
ix INJECTION WELLS	5280'
x PLUGGED OIL AND GAS WELLS	850' E
xi KNOWN WATER WELLS	2128' N
xii KNOWN SEWERS WITH MANHOLES	5280'

LOCATION DRAWING

WAVETECH HELIUM, INC.

#1 WAVETECH HARKER-FAMILY 31-22

NWNE, SECTION 22, T. 12 S., R. 43 W., 6th P.M.,

CHEYENNE COUNTY, COLORADO

DRG

RIFFIN & ASSOCIATES, INC.

(307) 862-5028

1414 ELK ST., ROCK SPRINGS, WY 82901

DRAWN: 7/26/22 - JMB

REVISID: NA

SCALE: 1" = 500'

DRG JOB No. 22269

304b(7)A LOC DWG