

T4S, R64W, 6th P.M.

LEGEND:

- = PROPOSED WELLHEAD.
- ◇ = TOP OF PRODUCTION.
- = TARGET BOTTOM HOLE.
- ▲ = SECTION CORNERS LOCATED. (NAD 83)

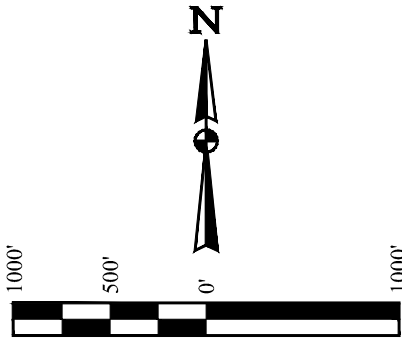
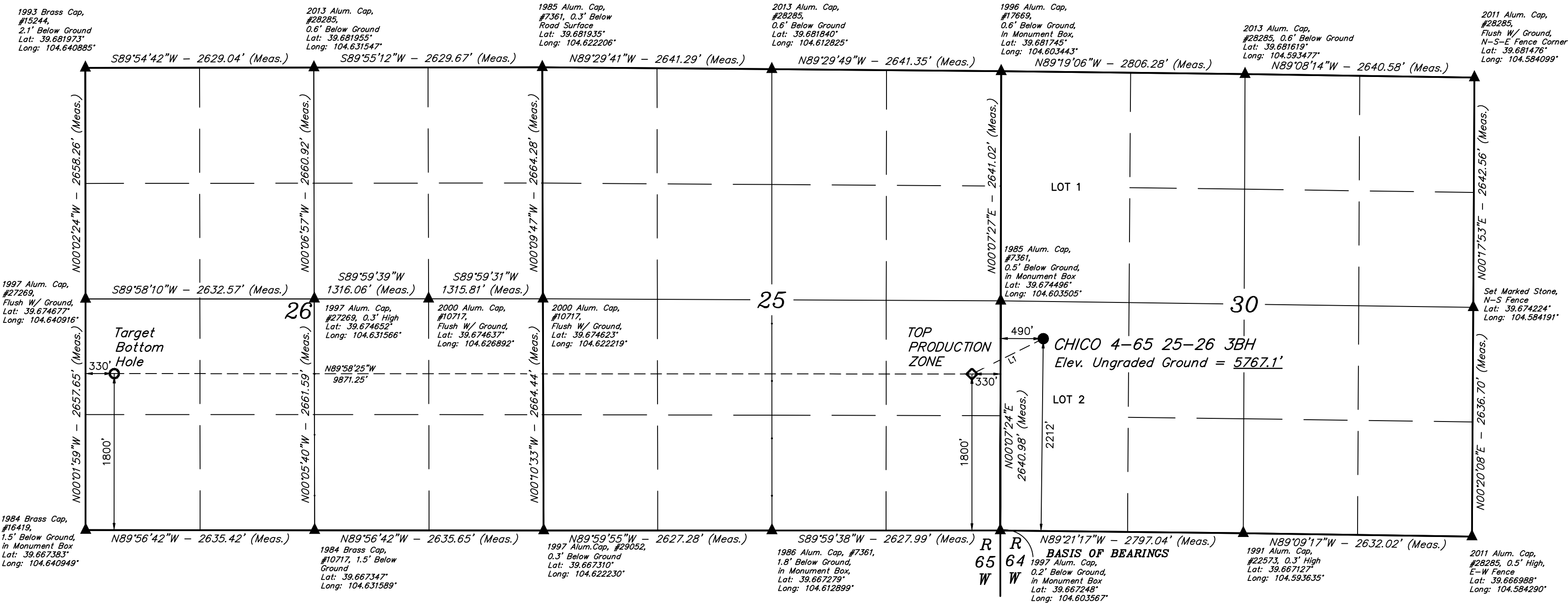
NOTE:

Distances referenced on plat to section lines are perpendicular.

CRESTONE PEAK
RESOURCES OPERATING, LLC

CHICO 4-65 25-26 3BH
LOT 2, SECTION 30, T4S, R64W, 6th P.M.
ARAPAHOE COUNTY, COLORADO

BASIS OF ELEVATION
OPUS SOLUTION GENERATED NAVD 88



LINE TABLE		
LINE	DIRECTION	LENGTH
L1	S63°39'27"W	915.99'

CERTIFICATE OF RECORD
THIS IS TO CERTIFY THAT THE ABOVE SURVEY WAS MADE IN ACCORDANCE WITH THE RULES AND REGULATIONS OF THE BOARD OF LAND SURVEYING, ARAPAHOE COUNTY, COLORADO, AND THAT THE SAME ARE TRUE AND CORRECT TO THE BEST OF MY KNOWLEDGE AND BELIEF.

RECORDED LAND SURVEYOR
RECORD NO. 28385
STATE OF COLORADO

SURVEYED BY	ORION RICE, N.W.	11-17-21	SCALE
DRAWN BY	K.C.	02-22-23	1" = 1000'
WELL LOCATION PLAT			



UELS, LLC
Corporate Office * 85 South 200 East
Vernal, UT 84078 * (435) 789-1017

PDOP = 1.4

NAD 83 (SURFACE HOLE LOCATION)	NAD 83 (TOP PRODUCTION ZONE)	NAD 83 (TARGET BOTTOM HOLE)
LATITUDE = 39°40'23.87" (39.673298°)	LATITUDE = 39°40'19.89" (39.672192°)	LATITUDE = 39°40'20.35" (39.672319°)
LONGITUDE = 104°36'06.39" (104.601775°)	LONGITUDE = 104°36'16.91" (104.604697°)	LONGITUDE = 104°38'23.12" (104.639755°)
STATE PLANE NAD 83 (CO. CENTRAL)	STATE PLANE NAD 83 (CO. CENTRAL)	STATE PLANE NAD 83 (CO. CENTRAL)
N: 1671377.47' E: 3252836.88'	N: 1670966.65' E: 3252018.44'	N: 1670917.40' E: 3242149.85'