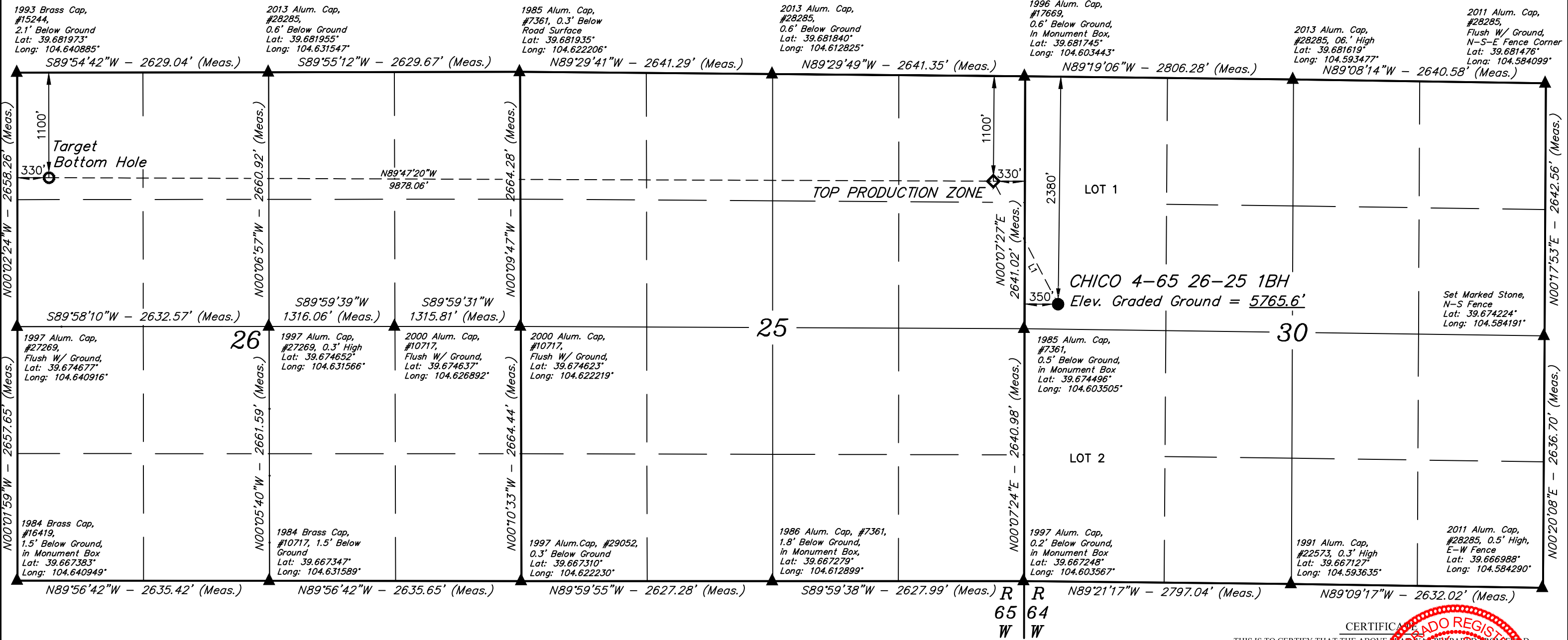


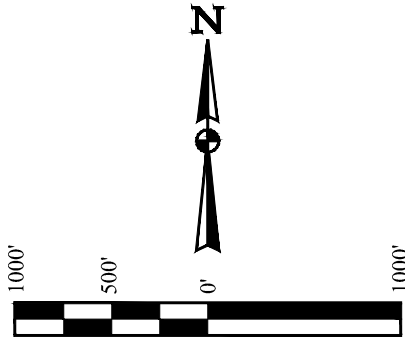
T4S, R64W, 6th P.M.

CRESTONE PEAK RESOURCES OPERATING, LLC

CHICO 4-65 26-25 1BH  
LOT 1, SECTION 30, T4S, R64W, 6th P.M.  
ARAPAHOE COUNTY, COLORADO



- LEGEND:
- = PROPOSED WELLHEAD.
  - ◆ = TOP PRODUCTION ZONE.
  - = TARGET BOTTOM HOLE.
  - ▲ = SECTION CORNERS LOCATED. (NAD 83)



LINE TABLE		
LINE	DIRECTION	LENGTH
L1	N27°44'58"W	1454.47'

NAD 83 (SURFACE HOLE LOCATION)	NAD 83 (TOP PRODUCTION ZONE)	NAD 83 (TARGET BOTTOM HOLE)
LATITUDE = 39°40'30.71" (39.675197°)	LATITUDE = 39°40'43.46" (39.678738°)	LATITUDE = 39°40'44.23" (39.678952°)
LONGITUDE = 104°36'08.12" (104.602256°)	LONGITUDE = 104°36'16.71" (104.604641°)	LONGITUDE = 104°38'23.01" (104.639726°)
STATE PLANE NAD 83 (CO. CENTRAL)	STATE PLANE NAD 83 (CO. CENTRAL)	STATE PLANE NAD 83 (CO. CENTRAL)
N: 1672067.78' E: 3252694.64'	N: 1673350.93' E: 3252010.61'	N: 1673333.47' E: 3242135.09'

CERTIFICATION  
THIS IS TO CERTIFY THAT THE ABOVE PLAT WAS PREPARED FROM FIELD NOTES OF ACTUAL SURVEYS MADE BY ME OR UNDER MY SUPERVISION, AND THAT THE SAME ARE TRUE AND CORRECT TO THE BEST OF MY KNOWLEDGE AND BELIEF.

REGISTERED LAND SURVEYOR  
REGISTRATION NO. 28285  
STATE OF COLORADO  
8-23



UELS, LLC  
Corporate Office \* 85 South 200 East  
Vernal, UT 84078 \* (435) 789-1017

SURVEYED BY	ORION RICE, N.W.	11-17-21	SCALE
DRAWN BY	K.C.	03-01-23	1" = 1000'

WELL LOCATION PLAT