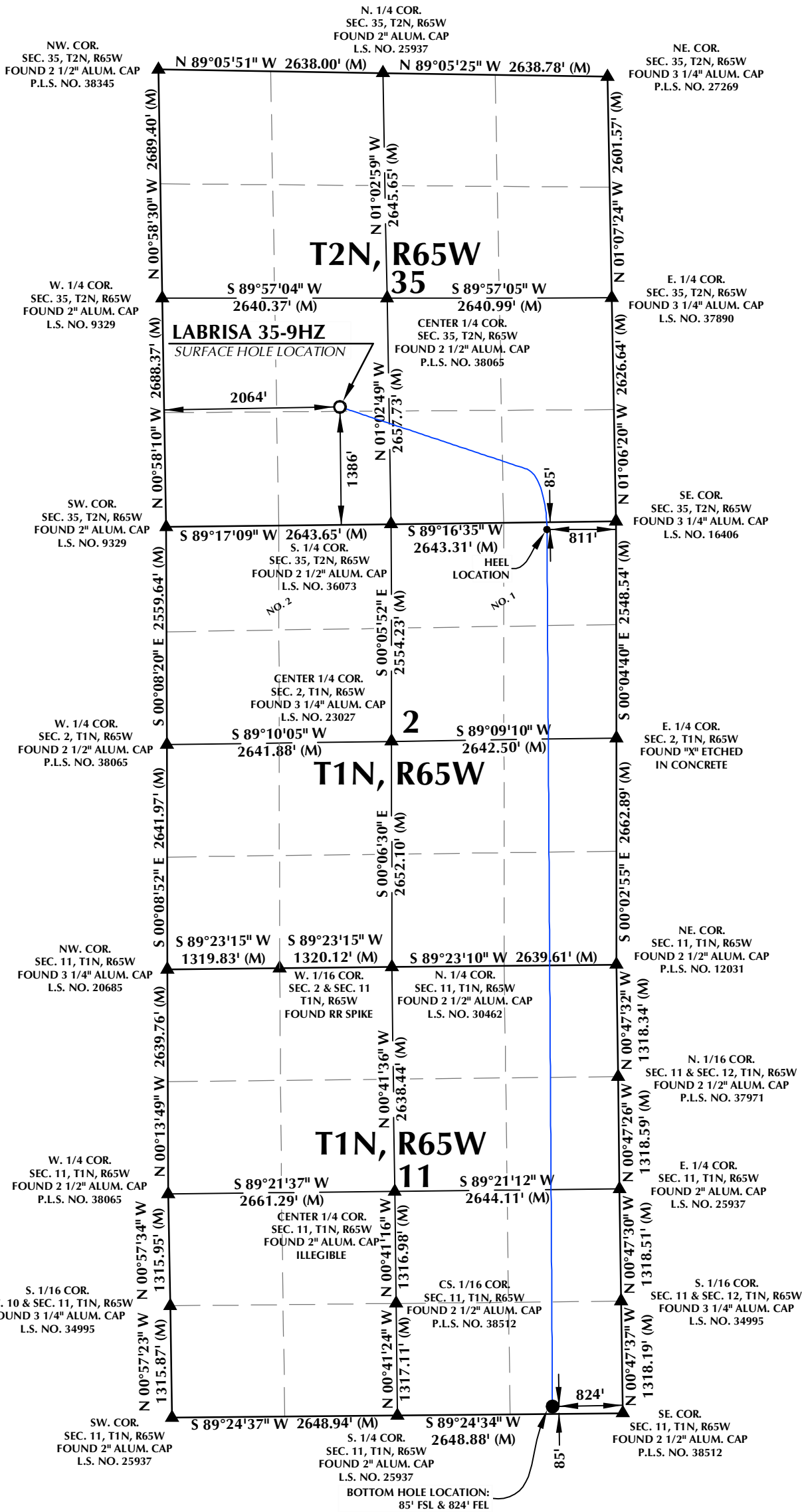


SURFACE HOLE LOCATION: NAD 83  
GROUND ELEVATION= 4969.7'  
LATITUDE= 40.091302°  
LONGITUDE= -104.633017°  
LATITUDE= 40°05'28.687"  
LONGITUDE= -104°37'58.863"  
HEEL LOCATION: NAD 83  
LATITUDE= 40.087281°  
LONGITUDE= -104.624364°  
LATITUDE= 40°05'14.212"  
LONGITUDE= -104°37'27.709"  
BOTTOM HOLE LOCATION: NAD 83  
LATITUDE= 40.058971°  
LONGITUDE= -104.624498°  
LATITUDE= 40°03'32.297"  
LONGITUDE= -104°37'28.192"



CERTIFICATE OF SURVEYOR:

THIS IS TO CERTIFY THAT THE ABOVE PLAT WAS PREPARED FROM FIELD NOTES OF ACTUAL SURVEYS MADE BY ME OR UNDER MY SUPERVISION AND THAT THE SAME ARE TRUE AND CORRECT TO THE BEST OF MY KNOWLEDGE AND BELIEF. THIS CERTIFICATE DOES NOT REPRESENT A LAND SURVEY OR IMPROVEMENT SURVEY PLAT AS DEFINED BY C.R.S. 38-51-102 AND CANNOT BE RELIED UPON TO DETERMINE OWNERSHIP.

*Randall K. French*  
9/9/22  
RANDALL K. FRENCH  
PROFESSIONAL LAND SURVEYOR  
COLORADO REGISTRATION NUMBER 38512

NOTICE:  
ACCORDING TO COLORADO STATE LAW YOU MUST COMMENCE LEGAL ACTION BASED UPON ANY DEFECT IN THIS SURVEY WITHIN THREE YEARS AFTER YOU FIRST DISCOVER SUCH DEFECT. IN NO EVENT MAY ANY ACTION BASED UPON ANY DEFECT IN THIS SURVEY BE COMMENCED MORE THAN TEN YEARS FROM THE DATE ON THE CERTIFICATION SHOWN HEREON.

NOTES:

- INDICATES SECTION CORNER.
- INDICATES CALCULATED CORNER.
- ELEVATION BASED ON NAVD88 (GEOID18).
- BASIS OF BEARINGS DERIVED FROM COLORADO COORDINATE SYSTEM OF 1983, NORTH ZONE.
- ALL MEASURED DISTANCES ARE GRID.
- COMBINED SCALE FACTOR: .99977273 CALCULATED FROM THE CENTER 1/4 CORNER OF SECTION 35, T2N, R65W.
- OPERATOR: TOBY OSBORN / PDOP = 1.2.
- WELL FOOTAGES ARE MEASURED AT RIGHT ANGLES TO THE SECTION LINES.

WELL PAD - LABRISA 11-35HZ

LABRISA 35-9HZ  
WELL LOCATION CERTIFICATE  
1386' FSL & 2064' FWL (NESW) (SURFACE HOLE LOCATION)  
LOCATED IN SECTION 35  
T2N, R65W, 6TH P.M.  
85' FNL & 811' FEL (NENE) (HEEL LOCATION)  
LOCATED IN SECTION 2  
85' FSL & 824' FEL (SESE) (BOTTOM HOLE LOCATION)  
LOCATED IN SECTION 11  
T1N, R65W, 6TH P.M.  
WELD COUNTY, COLORADO

Kerr-McGee Oil &  
Gas Onshore LP  
1099 18th Street  
Denver, Colorado 80202



CONSULTING, LLC

SHERIDAN OFFICE  
1095 Saberton Avenue  
Sheridan, Wyoming 82801  
Phone 307-674-0609  
LOVELAND OFFICE  
6706 North Franklin Avenue  
Loveland, Colorado 80538  
Phone 970-776-4331

DRAFTED BY:	SJM	CHECKED BY:	RKF
DATE DRAFTED:	9/9/22	DATE SURVEYED:	7/25/22
REVISED:		FILE NAME:	22-40