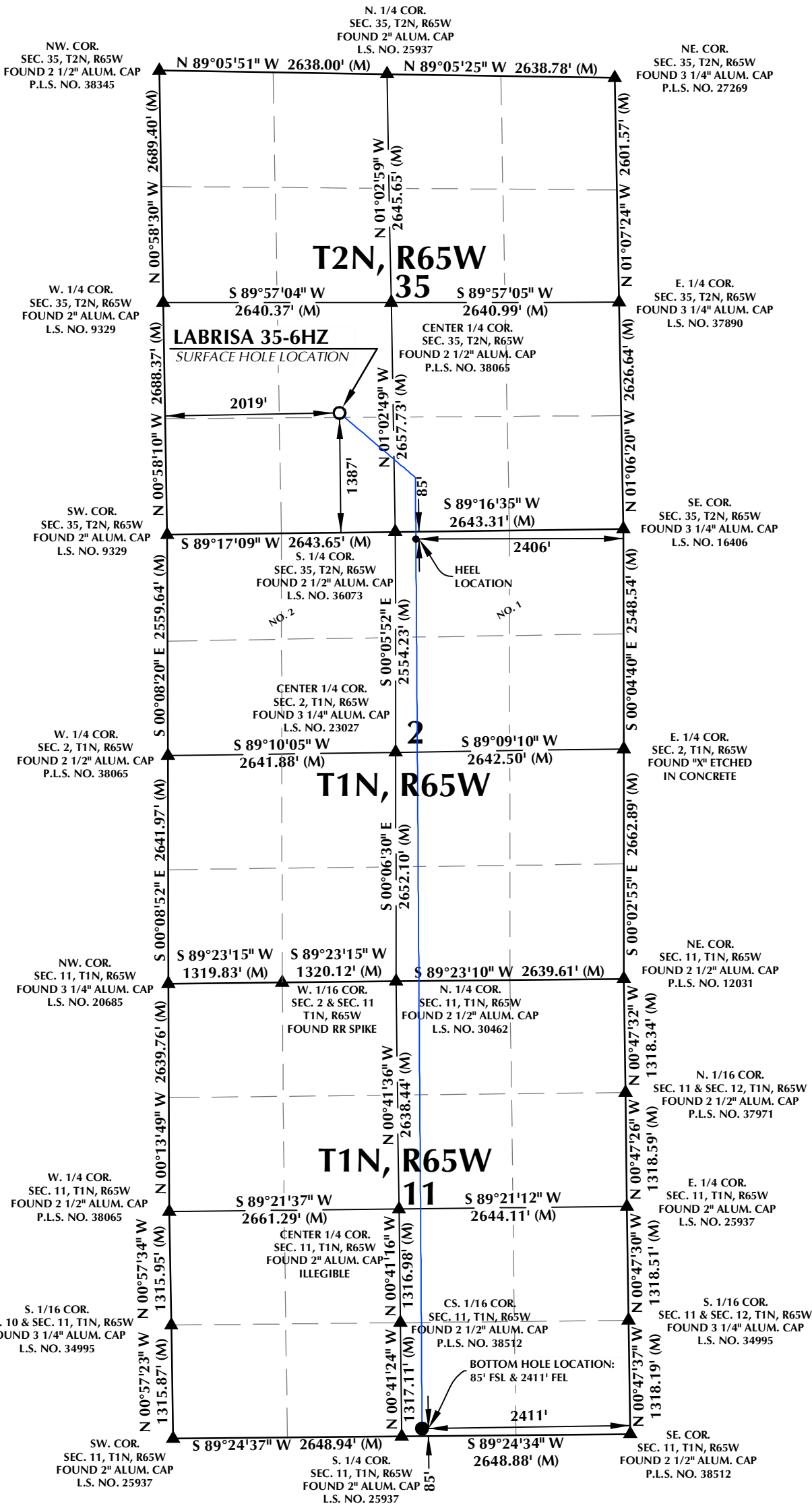


SURFACE HOLE LOCATION: NAD 83
GROUND ELEVATION= 4971.6'
LATITUDE= 40.091303°
LONGITUDE= -104.633178°
LATITUDE= 40°05'28.691"
LONGITUDE= -104°37'59.442"
HEEL LOCATION: NAD 83
LATITUDE= 40.087269°
LONGITUDE= -104.630063°
LATITUDE= 40°05'14.169"
LONGITUDE= -104°37'48.226"
BOTTOM HOLE LOCATION: NAD 83
LATITUDE= 40.058970°
LONGITUDE= -104.630166°
LATITUDE= 40°03'32.293"
LONGITUDE= -104°37'48.598"

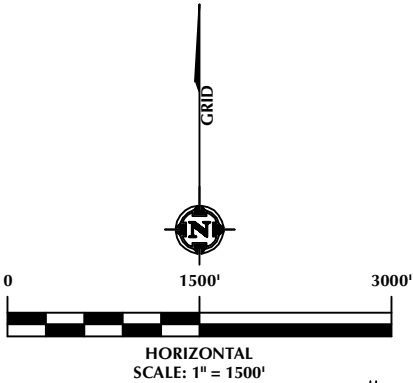


CERTIFICATE OF SURVEYOR:

THIS IS TO CERTIFY THAT THE ABOVE PLAT WAS PREPARED FROM FIELD NOTES OF ACTUAL SURVEYS MADE BY ME OR UNDER MY SUPERVISION AND THAT THE SAME ARE TRUE AND CORRECT TO THE BEST OF MY KNOWLEDGE AND BELIEF. THIS CERTIFICATE DOES NOT REPRESENT A LAND SURVEY OR IMPROVEMENT SURVEY PLAT AS DEFINED BY C.R.S. 38-51-102 AND CANNOT BE RELIED UPON TO DETERMINE OWNERSHIP.

RANDALL K. FRENCH
PROFESSIONAL LAND SURVEYOR
COLORADO REGISTRATION NUMBER 38512
9/9/22

NOTICE:
ACCORDING TO COLORADO STATE LAW YOU MUST COMMENCE LEGAL ACTION BASED UPON ANY DEFECT IN THIS SURVEY WITHIN THREE YEARS AFTER YOU FIRST DISCOVER SUCH DEFECT. IN NO EVENT MAY ANY ACTION BASED UPON ANY DEFECT IN THIS SURVEY BE COMMENCED MORE THAN TEN YEARS FROM THE DATE ON THE CERTIFICATION SHOWN HEREON.



NOTES:

- INDICATES SECTION CORNER.
- INDICATES CALCULATED CORNER.
- ELEVATION BASED ON NAVD88 (GEOID18).
- BASIS OF BEARINGS DERIVED FROM COLORADO COORDINATE SYSTEM OF 1983, NORTH ZONE.
- ALL MEASURED DISTANCES ARE GRID.
- COMBINED SCALE FACTOR: .9997273 CALCULATED FROM THE CENTER 1/4 CORNER OF SECTION 35, T2N, R65W. OPERATOR: TOBY OSBORN / PDOP = 1.2.
- WELL FOOTAGES ARE MEASURED AT RIGHT ANGLES TO THE SECTION LINES.

WELL PAD - LABRISA 11-35HZ

LABRISA 35-6HZ
WELL LOCATION CERTIFICATE
1387' FSL & 2019' FWL (NESW) (SURFACE HOLE LOCATION)
LOCATED IN SECTION 35
T2N, R65W, 6TH P.M.
85' FNL & 2406' FEL (NWNE) (HEEL LOCATION)
LOCATED IN SECTION 2
85' FSL & 2411' FEL (SWSE) (BOTTOM HOLE LOCATION)
LOCATED IN SECTION 11
T1N, R65W, 6TH P.M.
WELD COUNTY, COLORADO

Kerr-McGee Oil &
Gas Onshore LP
1099 18th Street
Denver, Colorado 80202



CONSULTING, LLC

SHERIDAN OFFICE
1095 Saberton Avenue
Sheridan, Wyoming 82801
Phone 307-674-0609
LOVELAND OFFICE
6706 North Franklin Avenue
Loveland, Colorado 80538
Phone 970-776-4331

DRAFTED BY:	SJM	CHECKED BY:	RKF
DATE DRAFTED:	9/9/22	DATE SURVEYED:	7/25/22
REVISED:		FILE NAME:	22-40