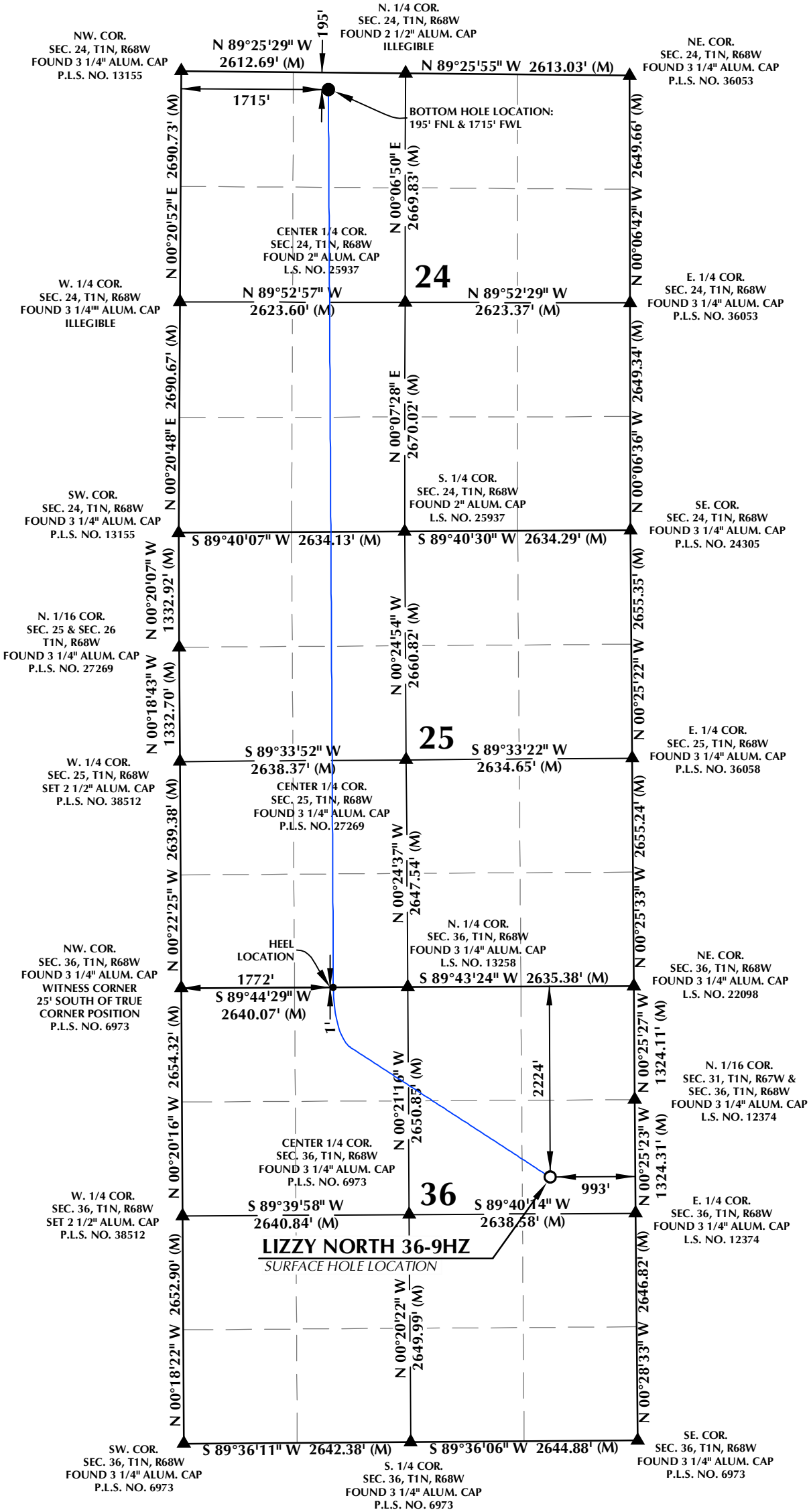


T1N, R68W

SURFACE HOLE LOCATION: NAD 83
GROUND ELEVATION= 5114.8'
LATITUDE= 40.008774°
LONGITUDE= -104.946103°
HEEL LOCATION: NAD 83
LATITUDE= 40.014893°
LONGITUDE= -104.955073°
BOTTOM HOLE LOCATION: NAD 83
LATITUDE= 40.043621°
LONGITUDE= -104.955050°
LONGITUDE= 40°02'37.037"
LONGITUDE= -104°57'18.179"



CERTIFICATE OF SURVEYOR:

THIS IS TO CERTIFY THAT THE ABOVE PLAT WAS PREPARED FROM FIELD NOTES OF ACTUAL SURVEYS MADE BY ME OR UNDER MY SUPERVISION AND THAT THE SAME ARE TRUE AND CORRECT TO THE BEST OF MY KNOWLEDGE AND BELIEF. THIS CERTIFICATE DOES NOT REPRESENT A LAND SURVEY PLAT OR IMPROVEMENT SURVEY PLAT AS DEFINED BY C.R.S. 38-51-102 AND CANNOT BE RELIED UPON TO DETERMINE OWNERSHIP.

Randall K. French
PROFESSIONAL LAND SURVEYOR
COLORADO REGISTRATION NUMBER 38512
11/28/22

NOTICE:
ACCORDING TO COLORADO STATE LAW YOU MUST COME TO COURT LEGAL ACTION BASED UPON ANY DEFECT IN THIS SURVEY WITHIN THREE YEARS AFTER YOU FIRST DISCOVER SUCH DEFECT. IN NO EVENT MAY ANY ACTION BASED UPON ANY DEFECT IN THIS SURVEY BE COMMENCED MORE THAN TEN YEARS FROM THE DATE ON THE CERTIFICATION SHOWN HEREON.

NOTES:

- INDICATES SECTION CORNER.
- INDICATES CALCULATED CORNER.
- ELEVATION BASED ON NAVD88 (GEOID18).
- BASIS OF BEARINGS DERIVED FROM COLORADO COORDINATE SYSTEM OF 1983, NORTH ZONE.
- ALL MEASURED DISTANCES ARE GRID.
- COMBINED SCALE FACTOR: .99972545 CALCULATED FROM THE E. 1/4 CORNER OF SECTION 36, T1N, R68W.
- OPERATOR: JEREMY GROVES/ PDOP = 1.9
- WELL FOOTAGES ARE MEASURED AT RIGHT ANGLES TO THE SECTION LINES.

WELL PAD - LIZZY 8-36HZ

LIZZY NORTH 36-9HZ
WELL LOCATION CERTIFICATE
2224' FNL & 993' FEL (SENE) (SURFACE HOLE LOCATION)
LOCATED IN SECTION 36
1' FSL & 1772' FWL (SESW) (HEEL LOCATION)
LOCATED IN SECTION 25
195' FNL & 1715' FWL (NENW) (BOTTOM HOLE LOCATION)
LOCATED IN SECTION 24
T1N, R68W, 6TH P.M.
WELD COUNTY, COLORADO

Kerr-McGee Oil &
Gas Onshore LP
1099 18th Street
Denver, Colorado 80202



CONSULTING, LLC

SHERIDAN OFFICE
1095 Saberton Avenue
Sheridan, Wyoming 82801
Phone 307-674-0609
LOVELAND OFFICE
6706 North Franklin Avenue
Loveland, Colorado 80538
Phone 970-776-4331

DRAFTED BY:	SJM	CHECKED BY:	RKF
DATE DRAFTED:	11/2/22	DATE SURVEYED:	10/22/22
REVISED:	11/28/22	FILE NAME:	21-43