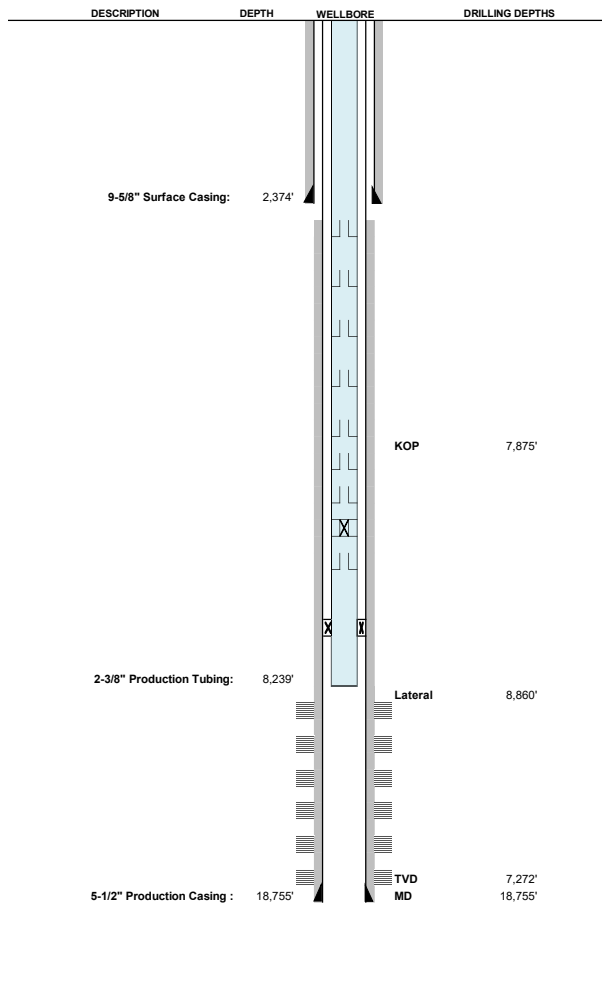


# Fawn 2833-02H



Date 9/19/2023

**WELL:** Fawn 2833-02H

**LOCATION:** SESW 22 1N 65W 6  
244 FSL 2255 FWL

**County:** Weld

**FORMATION:** Nio B

**API #:** 05-123-51849

**Field:** Wattenberg

**Spud:** 12/11/22

**Current Status:** Producing

**Well Type** Horizontal

**Well Length** XRL

**Casing and Tubular Data**

Type	Hole Size	Pipe Size	Grade	Weight	Pipe Top	Setting De	Sacks Cmt	Cmt Btm	Cmt Top	Slurry Yield	Slurry Weight
Conductor	26	16	ASTM	65.0 ppf	0'	80'	70	80'	0'	2. ft3/sack	14.0 ppg
Surface	13 1/2	9 5/8	J-55	36.0 ppf	0'	2,374'	1,051	2,374'	0'	1.6 ft3/sack	13.9 ppg
Production	8 1/2	5 1/2	P-110	20.0 ppf	0'	18,755'	2,555	18,755'	2,554'	1.6 ft3/sack	13.2 ppg
Tubing	n/a	2 3/8	J-55	4.6 ppf	0'	8,239'	n/a	n/a	n/a	n/a	n/a

**Perf Depths**

8,986' to 18,579'

**Formation Tops**

Fox Hills	1,237	ft
Niobrara	8,584	ft
Codell	n/a	ft

**Additional Information**

**Completion Type** Plug & Perf

**Lift Type** Flowing

**Last Workover** n/a

**Elevation Data**

GL	5104	feet
KB	5125	feet
Difference	21	feet

**Tubing BHA**