

POINT	NAD 83		NAD 27	
SURFACE HOLE LOCATION	N:	1244381.42	N:	244384.31
	E:	3223314.61	E:	2223466.94
	LAT:	N40.00145726	LAT:	N40.00147379
	LONG:	W104.70285730	LONG:	W104.70233427
LANDING POINT LOCATION	N:	1244563.50	N:	244566.42
	E:	3229670.72	E:	2229822.93
	LAT:	N40.0017980	LAT:	N40.0018145
	LONG:	W104.6801638	LONG:	W104.6796419
BOTTOM OF PRODUCTION ZONE	N:	1251583.37	N:	251586.21
	E:	3229584.82	E:	2229736.96
	LAT:	N40.0210702	LAT:	N40.0210868
	LONG:	W104.6802388	LONG:	W104.6797169
BOTTOM HOLE LOCATION	N:	1251673.36	N:	251676.20
	E:	3229583.72	E:	2229735.86
	LAT:	N40.0213172	LAT:	N40.0213339
	LONG:	W104.6802398	LONG:	W104.6797179

LEGEND

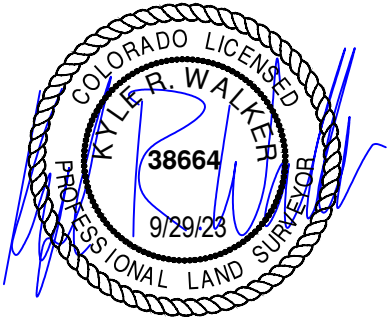
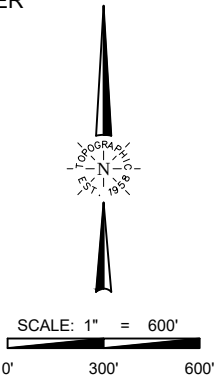
- COUNTY LINE
- RANGE/TOWNSHIP LINE
- SECTION LINE
- QUARTER SECTION LINE
- SIXTEENTH SECTION LINE
- POINT OF INTERSECTION
- MONUMENT FOUND
- CALCULATED CORNER

TOPOGRAPHIC
LOYALTY INNOVATION LEGACY

520 Stacy Court Ste B, Lafayette, CO 80026
303.666.0379 www.topographic.com

SURVEYOR'S STATEMENT
THE UNDERSIGNED HEREBY STATES THAT THE WELL LOCATION SHOWN HEREON WAS STAKED ON THE GROUND BASED ON EXISTING MONUMENTATION AND/OR PHYSICAL EVIDENCE FOUND IN THE FIELD AND IS CORRECT TO THE BEST OF MY KNOWLEDGE, INFORMATION AND BELIEF.

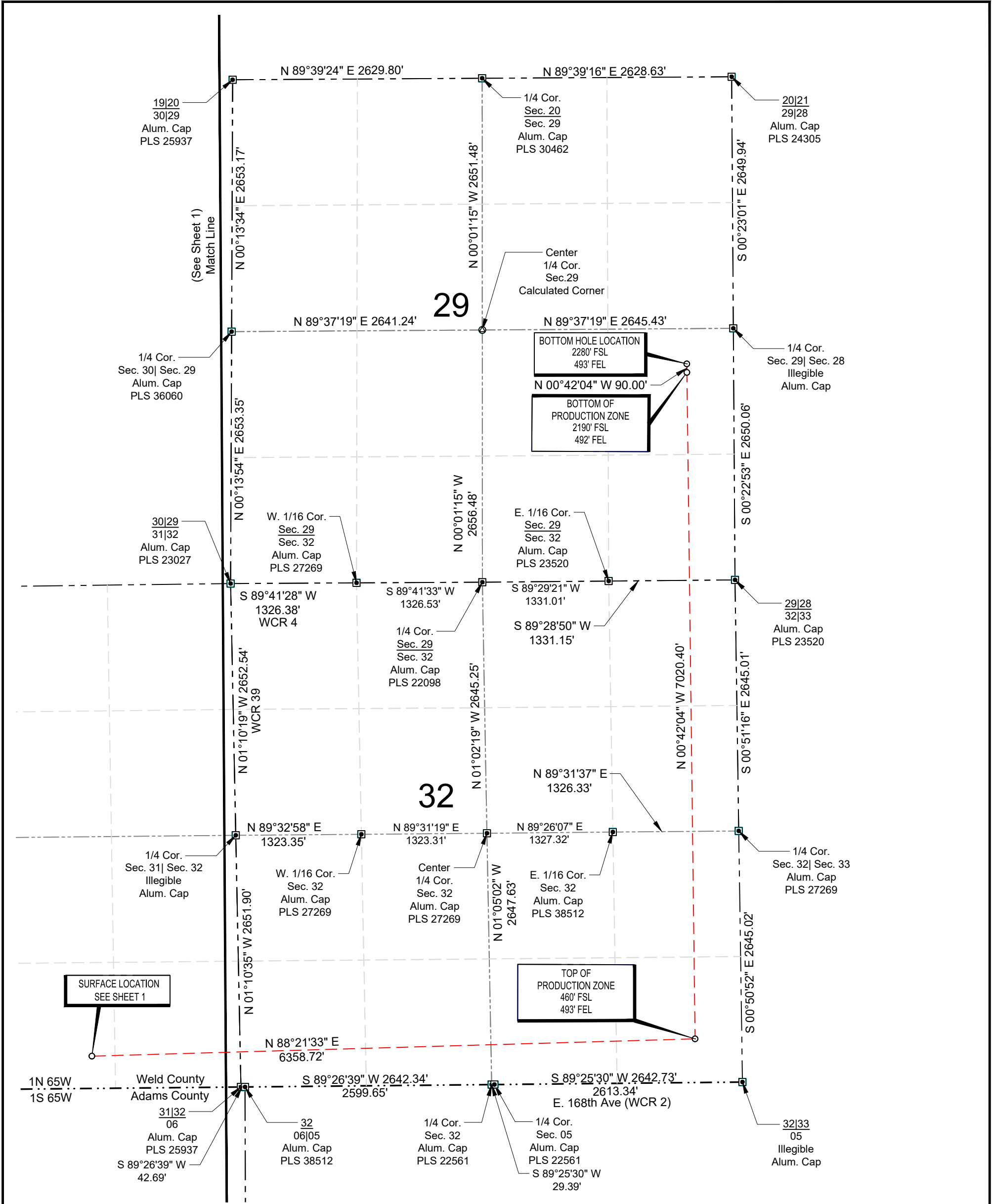
- NOTES**
- HORIZONTAL (NAD 83) AND VERTICAL (NAVD 88) DATUM IS BASED ON THE TRIMBLE VRS NETWORK. THE LINEAL UNITS OF MEASUREMENT ARE U.S. SURVEY FEET.
 - ALL DIRECTIONS, DISTANCES, AND DIMENSIONS SHOWN HEREON ARE BASED ON COORDINATES FROM THE "COLORADO COORDINATE SYSTEM OF 1983 NORTH ZONE" (TITLE 38, ARTICLE 52 C.R.S.).
 - ALL SECTION LINE DIMENSIONS SHOWN HEREON ARE BASED ON FIELD MEASUREMENTS OF EXISTING MONUMENTS AND/OR PHYSICAL EVIDENCE FOUND IN THE FIELD UNLESS OTHERWISE INDICATED.
 - PHYSICAL FEATURES SHOWN HEREON ARE FOR GRAPHICAL REPRESENTATION ONLY.
 - DISTANCES TO NEAREST SECTION LINES ARE MEASURED PERPENDICULARLY.
 - THIS IS NOT A LAND SURVEY NOR LAND SURVEY PLAT.
 - PDOP READING: 1.7 INSTRUMENT OPERATOR: T.ONLEY



VERDAD RESOURCES COUNTY LINE 3229 26H			
FIELD	12/10/2021	DRAFT	SW
REV 4	09/29/2023	CHECK	JRH
SHEET : 1 OF 2		JOB: 146029	

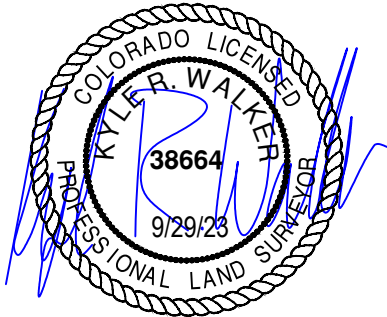
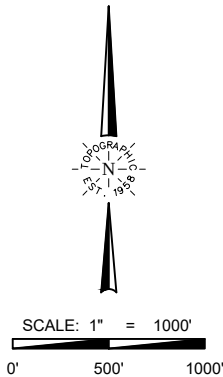
WELL LOCATION MAP

SHL SW/4 SE/4, SECTION 31 T1N R65W 6TH PM
TPZ SE/4 SE/4, SECTION 32 T1N R65W 6TH PM
BPZ NE/4 SE/4, SECTION 29 T1N R65W 6TH PM
BHL NE/4 SE/4, SECTION 29 T1N R65W 6TH PM
WELD COUNTY, COLORADO



LEGEND

- COUNTY LINE
- RANGE/TOWNSHIP LINE
- SECTION LINE
- QUARTER SECTION LINE
- SIXTEENTH SECTION LINE
- POINT OF INTERSECTION
- MONUMENT FOUND
- CALCULATED CORNER



SURVEYOR'S STATEMENT
THE UNDERSIGNED HEREBY STATES THAT THE WELL LOCATION SHOWN HEREON WAS STAKED ON THE GROUND BASED ON EXISTING MONUMENTATION AND/OR PHYSICAL EVIDENCE FOUND IN THE FIELD AND IS CORRECT TO THE BEST OF MY KNOWLEDGE, INFORMATION AND BELIEF.

- NOTES**
- HORIZONTAL (NAD 83) AND VERTICAL (NAVD 88) DATUM IS BASED ON THE TRIMBLE VRS NETWORK. THE LINEAL UNITS OF MEASUREMENT ARE U.S. SURVEY FEET.
 - ALL DIRECTIONS, DISTANCES, AND DIMENSIONS SHOWN HEREON ARE BASED ON COORDINATES FROM THE "COLORADO COORDINATE SYSTEM OF 1983 NORTH ZONE" (TITLE 38, ARTICLE 52 C.R.S.).
 - ALL SECTION LINE DIMENSIONS SHOWN HEREON ARE BASED ON FIELD MEASUREMENTS OF EXISTING MONUMENTS AND/OR PHYSICAL EVIDENCE FOUND IN THE FIELD UNLESS OTHERWISE INDICATED.
 - PHYSICAL FEATURES SHOWN HEREON ARE FOR GRAPHICAL REPRESENTATION ONLY.
 - DISTANCES TO NEAREST SECTION LINES ARE MEASURED PERPENDICULARLY.
 - THIS IS NOT A LAND SURVEY NOR LAND SURVEY PLAT.
 - PDOP READING: 1.7 INSTRUMENT OPERATOR: T.ONLEY

VERDAD RESOURCES
COUNTY LINE 3229 26H

FIELD	12/10/2021	DRAFT	SW
REV 4	09/29/2023	CHECK	JRH
SHEET : 2 OF 2		JOB: 146029	

WELL LOCATION MAP
SHL SW/4 SE/4, SECTION 31 T1N R65W 6TH PM
TPZ SE/4 SE/4, SECTION 32 T1N R65W 6TH PM
BPZ NE/4 SE/4, SECTION 29 T1N R65W 6TH PM
BHL NE/4 SE/4, SECTION 29 T1N R65W 6TH PM
WELD COUNTY, COLORADO