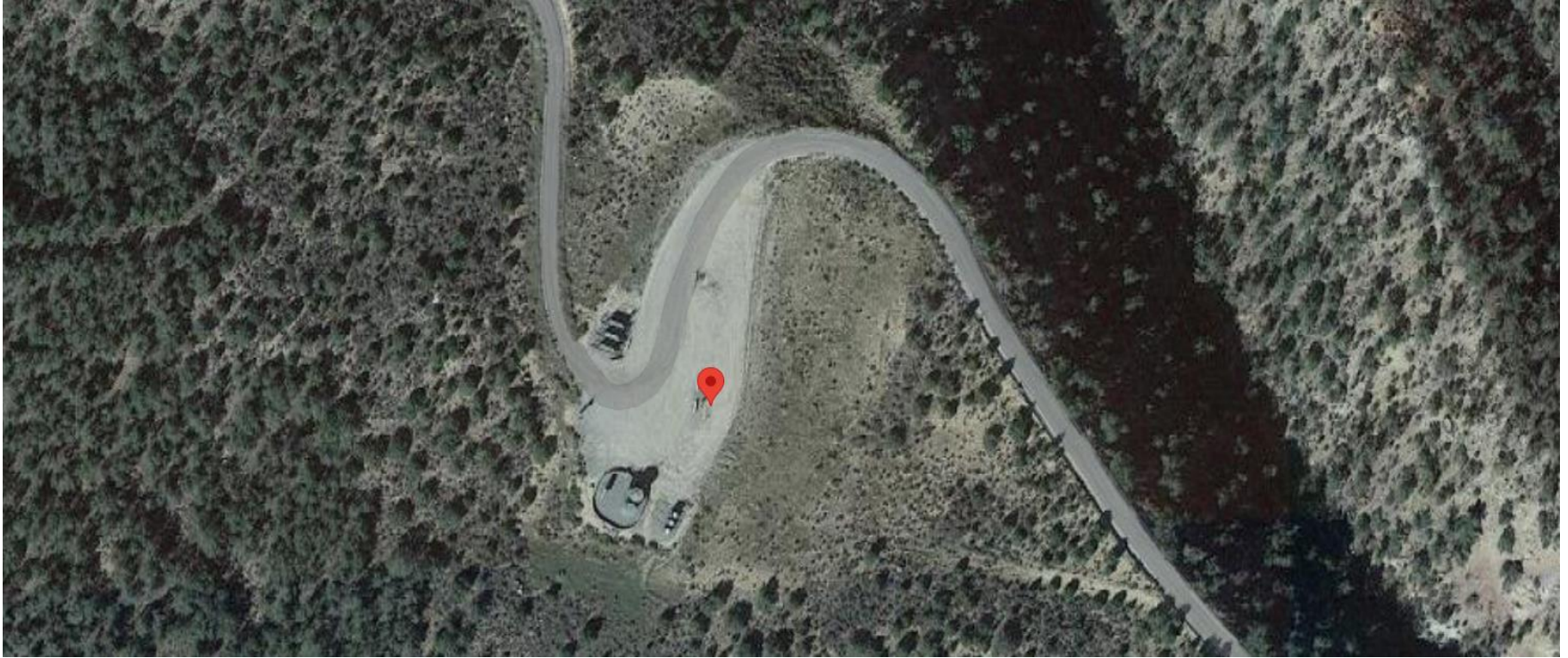


**Storm Water Management and Erosion control**  
**Location Name: CAERUS PICEANCE LLC SCARBER RO2 Pad**  
**Location #: 334669**



**Location Overview: Location is within Black Bear/High Priority/Density Habitat areas & within close proximity to NSO Habitat area. Location is approximately 424 yards from Porcupine Creek.**

**Section/Township/Range: 2 7S94W**



**COLORADO**  
Energy & Carbon Management  
Commission  
Department of Natural Resources



**Storm water Management and Erosion control**  
**Location Name: CAERUS PICEANCE LLC SCARBER RO2 Pad**  
**Location #: 334669**



**North West corner of location.**



**North East corner of location.**



**South West corner of location.**



**South East corner of location.**