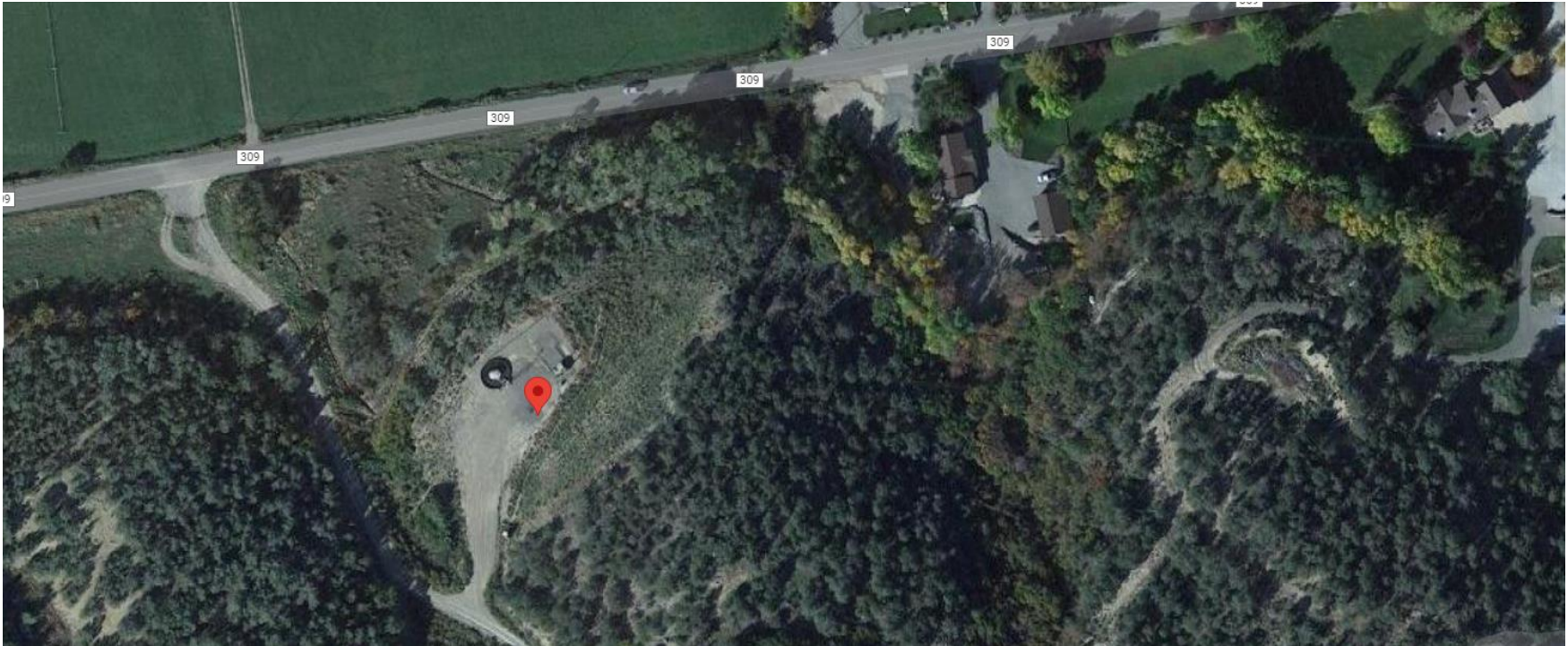


Storm Water Management and Erosion control

Location Name: TEP ROCKY MOUNTAIN LLC FNB OF GRAND JUNCTION TR GV 87-36 Pad

Location ID: 334815



**Location Overview: Location is within High
Priority/Density/Black Bear Habitat areas.**

Section/Township/Range: 36 6S95W



COLORADO
Energy & Carbon Management
Commission
Department of Natural Resources

Storm water Management and Erosion control

Location Name: TEP ROCKY MOUNTAIN LLC FNB OF GRAND JUNCTION TR GV 87-36 Pad

Location ID: 334815



North West corner of location.



North East corner of location.



South West corner of location.



South East corner of location.

Storm water Management and Erosion control

Location Name: TEP ROCKY MOUNTAIN LLC FNB OF GRAND JUNCTION TR GV 87-36 Pad

Location ID: 334815



Photo # 565 Erosion & transport of sediment (N/NE area of location)



Photo # 566 BMP needs maintenance (N/NE area of location)

Storm water Management and Erosion control

Location Name: TEP ROCKY MOUNTAIN LLC FNB OF GRAND JUNCTION TR GV 87-36 Pad

Location ID: 334815



Photo # 567 BMP needs maintenance (N/NE area of location)