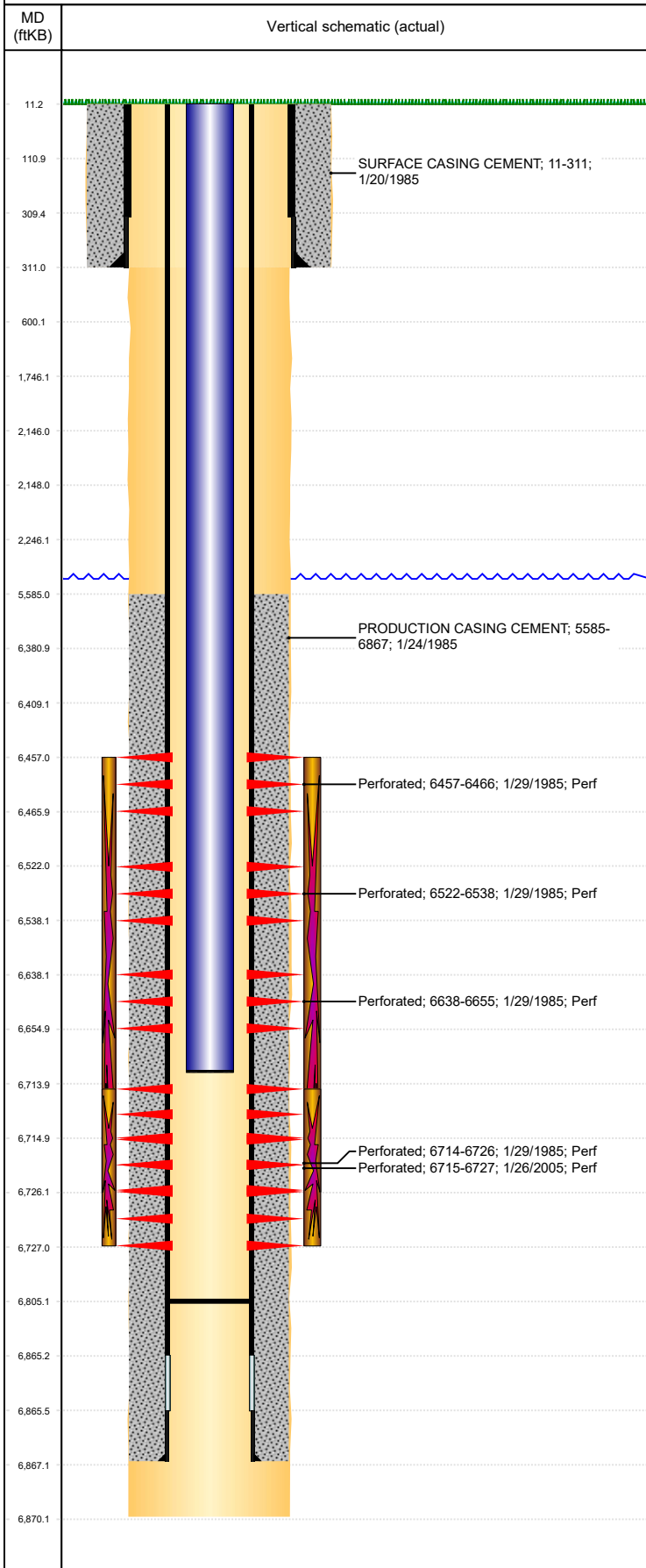




P&A Wellbore For State

Well Name: WATKINS 12-01

Land, Original Hole, 9/26/2023 6:40:36 AM



Well Header									
Surface UWI 0512312285			Business Unit Rockies			Gov Auth Dist		Prod Tree Loc Land	
Orig. KB to Gnd (ft) 11.00		Original Spud Date 1/20/1985		Abandon Date		Well Sub-Status PR			High... N
Comment LIMITED ENTRY									
Surface Location (Congressional)									
Qtr 3 SE	Qtr 4 SW	Section 12	Twnshp 4	Twنش... N	Range 64	Rng E/L... W	Latitude (°) 40.32146266 6	Longitude (°) -104.501580794	
Wellbore Sections									
Section Des			Hole Size (in)			Act Top (ftKB)		Act Btm (ftKB)	
SURFACE			12 1/4			11.0		311.0	
PRODUCTION			7 7/8			311.0		6,870.0	
Casing Strings									
Csg Des			Run Date		OD (in)	Wt/Len (lb/ft)	Grade	Top Depth (MD) (ftKB)	Set Depth (MD) (ftKB)
Surface			1/20/1985		8 5/8	36.00		11	311
Production Casing			1/24/1985		4 1/2	11.60	N-80	11	6867
Cement									
Des					Start Date		Top (ftKB)		Btm (ftKB)
SURFACE CASING CEMENT					1/20/1985		11.0		311.0
PRODUCTION CASING CEMENT					1/24/1985		5,585.0		6,867.0
Zone Statuses									
Zone Name		Status Date	Status	Fluid Type	Job			Prod Method	
NIOBRARA-CO...			PR		DRILLING/COMPLETION - ORIGINAL, 1/20/1985... DRILLING/COMPLETION - ORIGINAL, 1/20/1985... RE-FRAC, 2/1/2005 00:00				
NIOBRARA		1/30/1985	PR					Flowing	
CODELL		1/30/1985	PR					Flowing	
CODELL		2/11/2005	PR					Flowing	
Perforation Data									
Linked Zone			Explosive Type	Entered Shot Total	Top (ftKB)		Btm (ftKB)		Date
NIOBRARA, Original Hole			A	14 48	6,457.0		6,466.0		1/29/1985
NIOBRARA, Original Hole			B		6,522.0		6,538.0		1/29/1985
NIOBRARA, Original Hole			C		6,638.0		6,655.0		1/29/1985
CODELL, Original Hole					6,714.0		6,726.0		1/29/1985
CODELL, Original Hole					6,715.0		6,727.0		1/26/2005
Stimulation Intervals									
Zone				Start Date		Top (ftKB)		Btm (ftKB)	
NIOBRARA-CODELL, Original Hole				1/29/1985		6,457.0		6,726.0	
CODELL, Original Hole				2/1/2005		6,714.0		6,727.0	
Other In Hole									
Run Date		Des			Make		OD (in)	Top (ftKB)	Btm (ftKB)
Logs									
Date		Type					Depth Top (MD) (ftKB)		Btm (ftKB)
1/24/1985		COMPENSATED NEUTRON					6,300		6,867.0
1/24/1985		INDUCTION					295		6,864.0
1/28/1985		CEMENT BOND					5,420		6,814.0
Plug Back Total Depths									
Date		Type			Com				PBDT (ftKB)
1/28/1985		FILL			DEPTH LOGGER ON CBL				6,816
2/4/2005		FILL			TAGGED @ 6805' KB				6,805