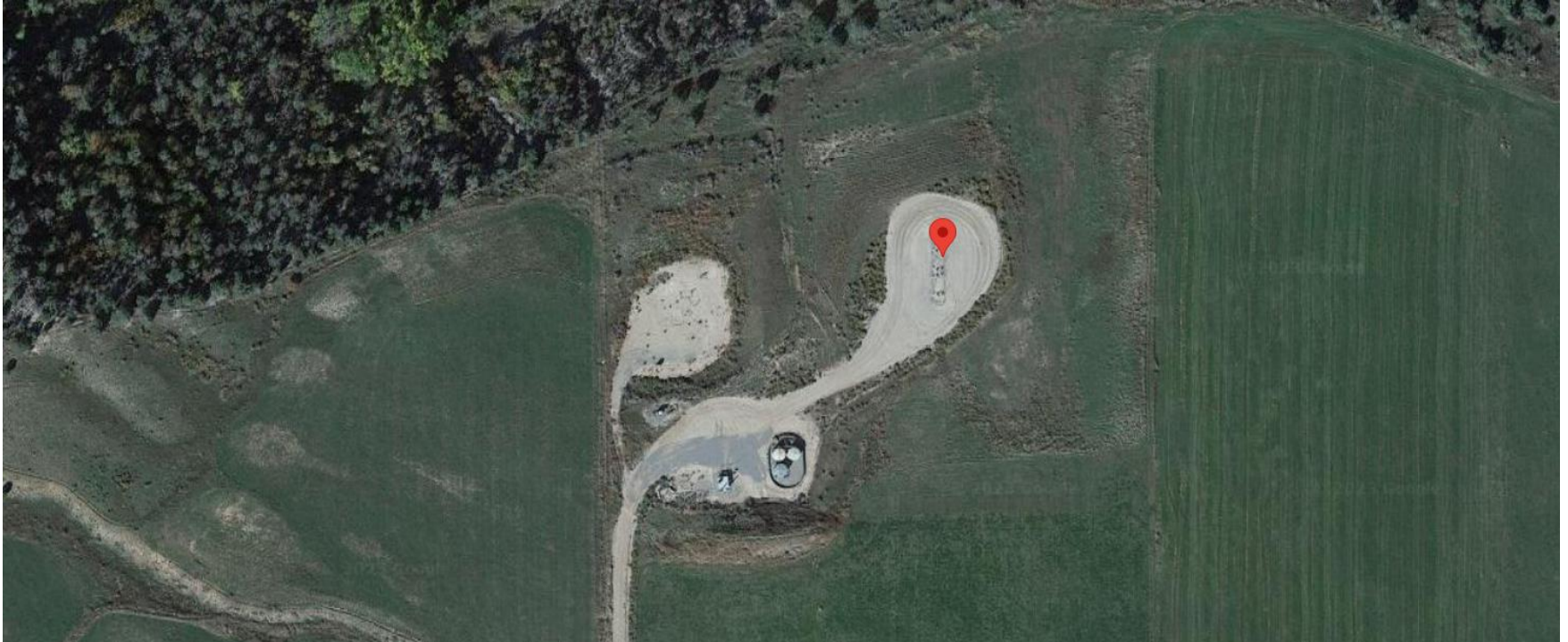


**Storm Water Management and Erosion control**  
**Location Name: TEP ROCKY MOUNTAIN LLC RWF 22-24 Pad**  
**Location ID: 335511**



**Location Overview: Location is within High Priority/Density/Black Bear Habitat areas/Bald Eagle Roost site & in close proximity to NSO Habitat area. Location is approximately 363 yards from the Colorado River.**

**Section/Township/Range: 24 6S94W**

**Storm water Management and Erosion control**  
**Location Name: TEP ROCKY MOUNTAIN LLC RWF 22-24 Pad**  
**Location ID: 335511**



**North West corner of location.**



**North East corner of location.**



**South West corner of location.**



**South East corner of location.**