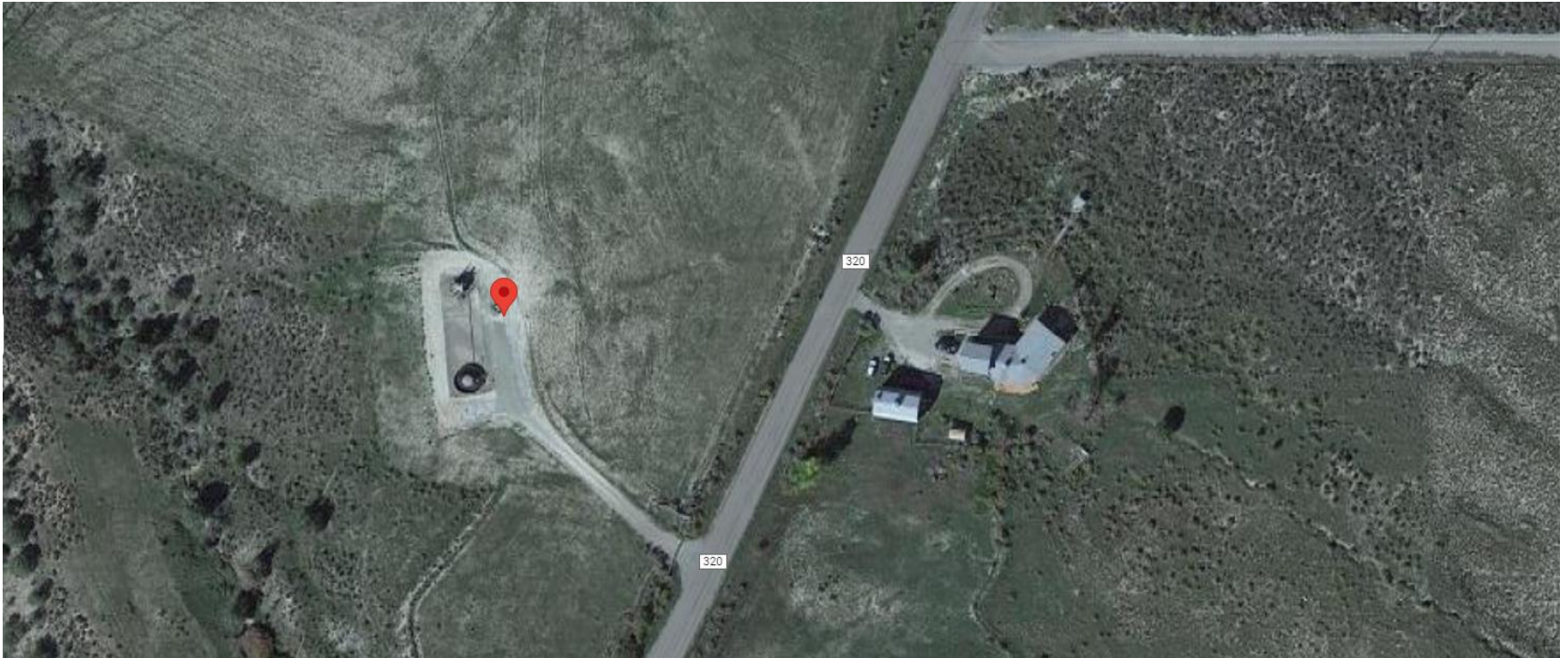


Storm Water Management and Erosion control
Location Name: TEP ROCKY MOUNTAIN LLC SAVAGE RMV 72-34 Pad
Location ID: 323994



Location Overview: Location is within High Priority/Density/Black Bear Habitat areas/Bald Eagle Roost site & in close proximity to NSO Habitat area. Location is approximately 288 yards from Spruce Creek.

Section/Township/Range: 34 6S94W

Storm water Management and Erosion control
Location Name: TEP ROCKY MOUNTAIN LLC SAVAGE RMV 72-34 Pad
Location ID: 323994



North West corner of location.



North East corner of location.



South West corner of location.



South East corner of location.

Storm water Management and Erosion control
Location Name: TEP ROCKY MOUNTAIN LLC SAVAGE RMV 72-34 Pad
Location ID: 323994



Photo # 9992 Erosion & transport of sediment off location & into vegetation/insufficient BMP's

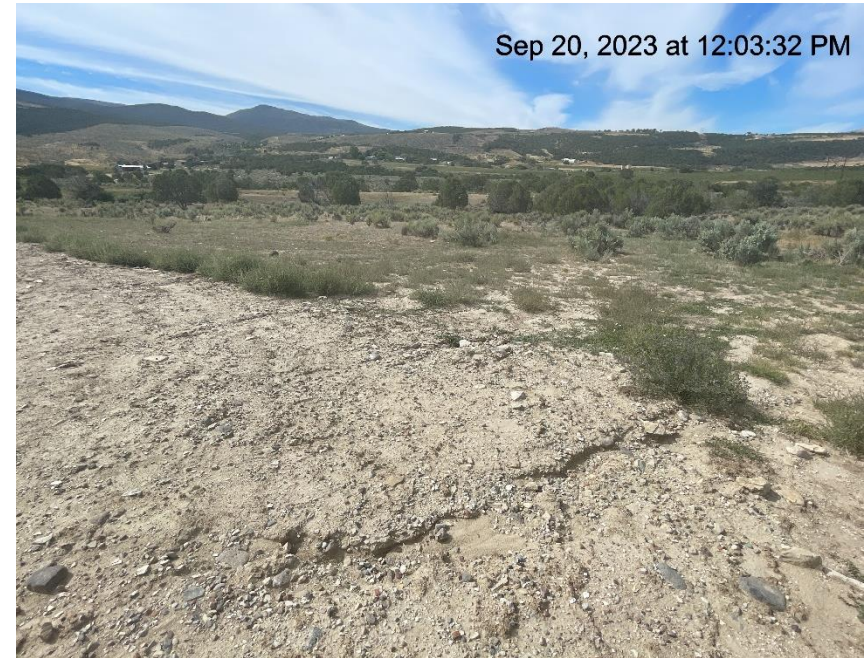


Photo # 9993 Erosion & transport of sediment off location & into vegetation/insufficient BMP's

Storm water Management and Erosion control
Location Name: TEP ROCKY MOUNTAIN LLC SAVAGE RMV 72-34 Pad
Location ID: 323994



Photo # 9994 Erosion & transport of sediment off location & into vegetation/insufficient BMP's



Photo # 9995 Erosion & transport of sediment off location & into vegetation/insufficient BMP's

Storm water Management and Erosion control
Location Name: TEP ROCKY MOUNTAIN LLC SAVAGE RMV 72-34 Pad
Location ID: 323994



Photo # 9998 Erosion & transport of sediment off location & into vegetation/insufficient BMP's



Photo # 10002 Erosion & transport of sediment off location & into vegetation/insufficient BMP's

Storm water Management and Erosion control
Location Name: TEP ROCKY MOUNTAIN LLC SAVAGE RMV 72-34 Pad
Location ID: 323994



**Photo # 10005 Erosion & transport of sediment off location
& into vegetation/insufficient BMP's**



**Photo # 10006 Erosion & transport of sediment off location
& into vegetation/insufficient BMP's**

Storm water Management and Erosion control
Location Name: TEP ROCKY MOUNTAIN LLC SAVAGE RMV 72-34 Pad
Location ID: 323994



**Photo # 10007 Erosion & transport of sediment off location
& into vegetation/insufficient BMP's**



**Photo # 10008 Erosion & transport of sediment off location
& into vegetation/insufficient BMP's**

Storm water Management and Erosion control
Location Name: TEP ROCKY MOUNTAIN LLC SAVAGE RMV 72-34 Pad
Location ID: 323994



Sep 20, 2023 at 12:05:47 PM

**Photo # 10010 Erosion & transport of sediment off location
& into vegetation/insufficient BMP's**



Sep 20, 2023 at 12:06:18 PM

**Photo # 10016 Erosion & transport of sediment off location
& into vegetation/insufficient BMP's**