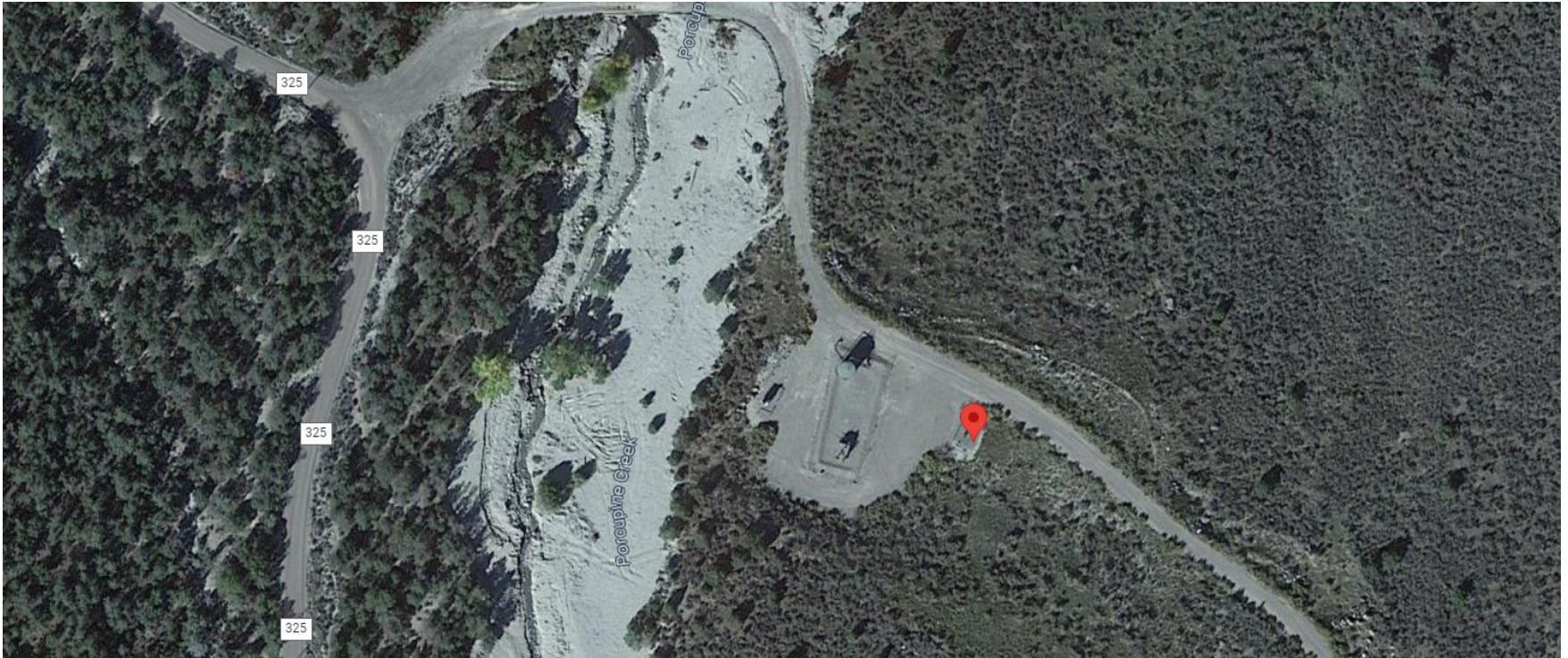


Storm Water Management and Erosion control
Location Name: CAERUS PICEANCE LLC RF2 Pad
Location #: 334687



**Location Overview: Location is within High
Priority/Density/Black Bear/NSO Habitat areas. Location is
approximately 51 yards from Porcupine Creek.**

Section/Township/Range: 2 7S94W

Storm water Management and Erosion control
Location Name: CAERUS PICEANCE LLC RF2 Pad
Location #: 334687



North West corner of location.



North East corner of location.



South West corner of location.



South East corner of location.

Storm water Management and Erosion control
Location Name: CAERUS PICEANCE LLC RF2 Pad
Location #: 334687



Photo # 9890 Erosion & transport of sediment on lease road



**Photo # 9891 Erosion & transport of sediment on lease road
& off into a vegetated area/insufficient BMP's**

Storm water Management and Erosion control
Location Name: CAERUS PICEANCE LLC RF2 Pad
Location #: 334687



**Photo # 9892 Erosion & transport of sediment on lease road
& off into a vegetated area/insufficient BMP's**



**Photo # 9893 Erosion & transport of sediment on lease road
& off into a vegetated area/insufficient BMP's**

Storm water Management and Erosion control
Location Name: CAERUS PICEANCE LLC RF2 Pad
Location #: 334687



**Photo # 9894 Erosion & transport of sediment on lease road
& off into a vegetated area/insufficient BMP's**



**Photo # 9897 Erosion & transport of sediment off of lease
road & into a vegetated area/insufficient BMP's**

Storm water Management and Erosion control
Location Name: CAERUS PICEANCE LLC RF2 Pad
Location #: 334687



Photo # 9898 Erosion & transport of sediment off of lease road & into a vegetated area/insufficient BMP's



Photo # 9899 Erosion & transport of sediment off of lease road & into a vegetated area/insufficient BMP's