

**Inspection Photos**  
**Location Name: CAERUS PICEANCE LLC RJ2 Pad**  
**Location #: 334698**



Sep 19, 2023 at 11:10:12 AM



Sep 19, 2023 at 11:10:30 AM

**Photo # 9838 From entrance to location**

**Photo # 9839 Location**

**Inspection Photos**  
**Location Name: CAERUS PICEANCE LLC RJ2 Pad**  
**Location #: 334698**



**Photo # 9840 Location**



**Photo # 9841 Location**





**Inspection Photos**  
**Location Name: CAERUS PICEANCE LLC RJ2 Pad**  
**Location #: 334698**



**Photo # 9842 Location**



**Photo # 9843 Location**



**Inspection Photos**  
**Location Name: CAERUS PICEANCE LLC RJ2 Pad**  
**Location #: 334698**



**Photo # 9851 Open ended load line**



**Photo # 9852 Debris**



**Inspection Photos**  
**Location Name: CAERUS PICEANCE LLC RJ2 Pad**  
**Location #: 334698**



**Photo # 9852 Holes in containment liner**



**Photo # 9853 Holes in containment liner**



**Inspection Photos**  
**Location Name: CAERUS PICEANCE LLC RJ2 Pad**  
**Location #: 334698**



**Photo # 9854 Holes in containment liner**



**Photo # 9855 Hole in containment liner**



**Inspection Photos**  
**Location Name: CAERUS PICEANCE LLC RJ2 Pad**  
**Location #: 334698**



**Photo # 9854 Holes in secondary containment liner**



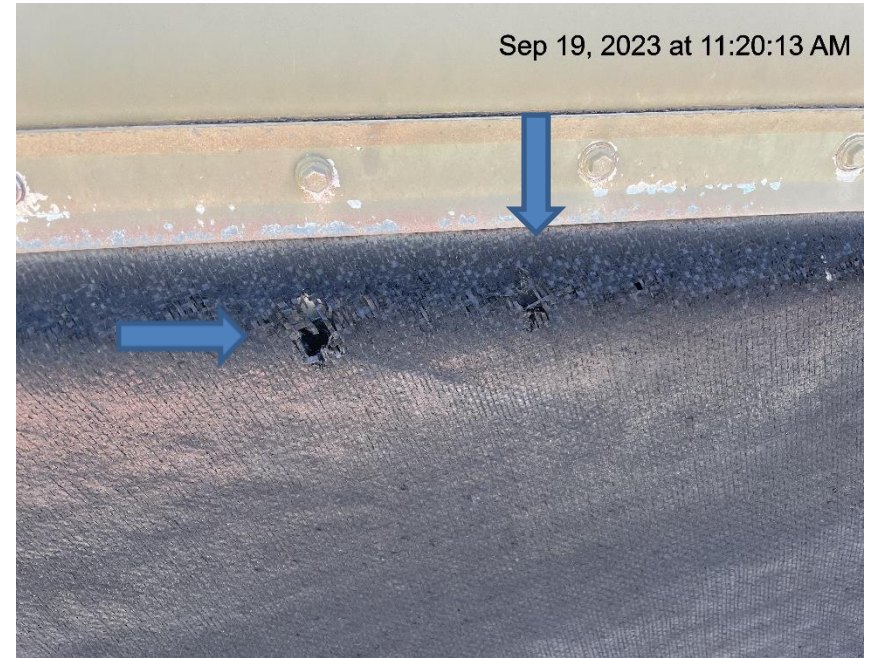
**Photo # 9856 Hole in secondary containment liner**



**Inspection Photos**  
**Location Name: CAERUS PICEANCE LLC RJ2 Pad**  
**Location #: 334698**



**Photo # 9857 Holes in secondary containment liner**



**Photo # 9858 Holes in secondary containment liner**



**Inspection Photos**  
**Location Name: CAERUS PICEANCE LLC RJ2 Pad**  
**Location #: 334698**



**Photo # 9857 Holes in secondary containment liner**



**Photo # 9859 Hole in secondary containment liner**



**Inspection Photos**  
**Location Name: CAERUS PICEANCE LLC RJ2 Pad**  
**Location #: 334698**



**Photo # 9862 Holes in secondary containment liner**



**Photo # 9863 Hole in secondary containment liner**



**Inspection Photos**  
**Location Name: CAERUS PICEANCE LLC RJ2 Pad**  
**Location #: 334698**



**Photo # 9861 Wasp nest on secondary containment liner**



**Photo # 9867 Stained soils & gravel**



## Inspection Photos

Location Name: CAERUS PICEANCE LLC RJ2 Pad

Location #: 334698



**Photo # 9861 Flare lacks auto-igniter or continuous pilot light**