

Colorado Oil and Gas Conservation Commission

# Blanche 1 Location ID # 327367 Issue Report










Created on September 21, 2023

Captured on September 21, 2023



Type	Count
Observation	7

No.	Type	Severity	Created	Status	Cost of Repair
4	 Observation	3 - Moderate	September 22, 2023	Open	—
5	 Observation	3 - Moderate	September 22, 2023	Open	—
6	 Observation	3 - Moderate	September 22, 2023	Open	—
7	 Observation	3 - Moderate	September 22, 2023	Open	—
8	 Observation	3 - Moderate	September 22, 2023	Open	—
9	 Observation	3 - Moderate	September 22, 2023	Open	—
11	 Observation	5 - Critical	September 22, 2023	Open	—

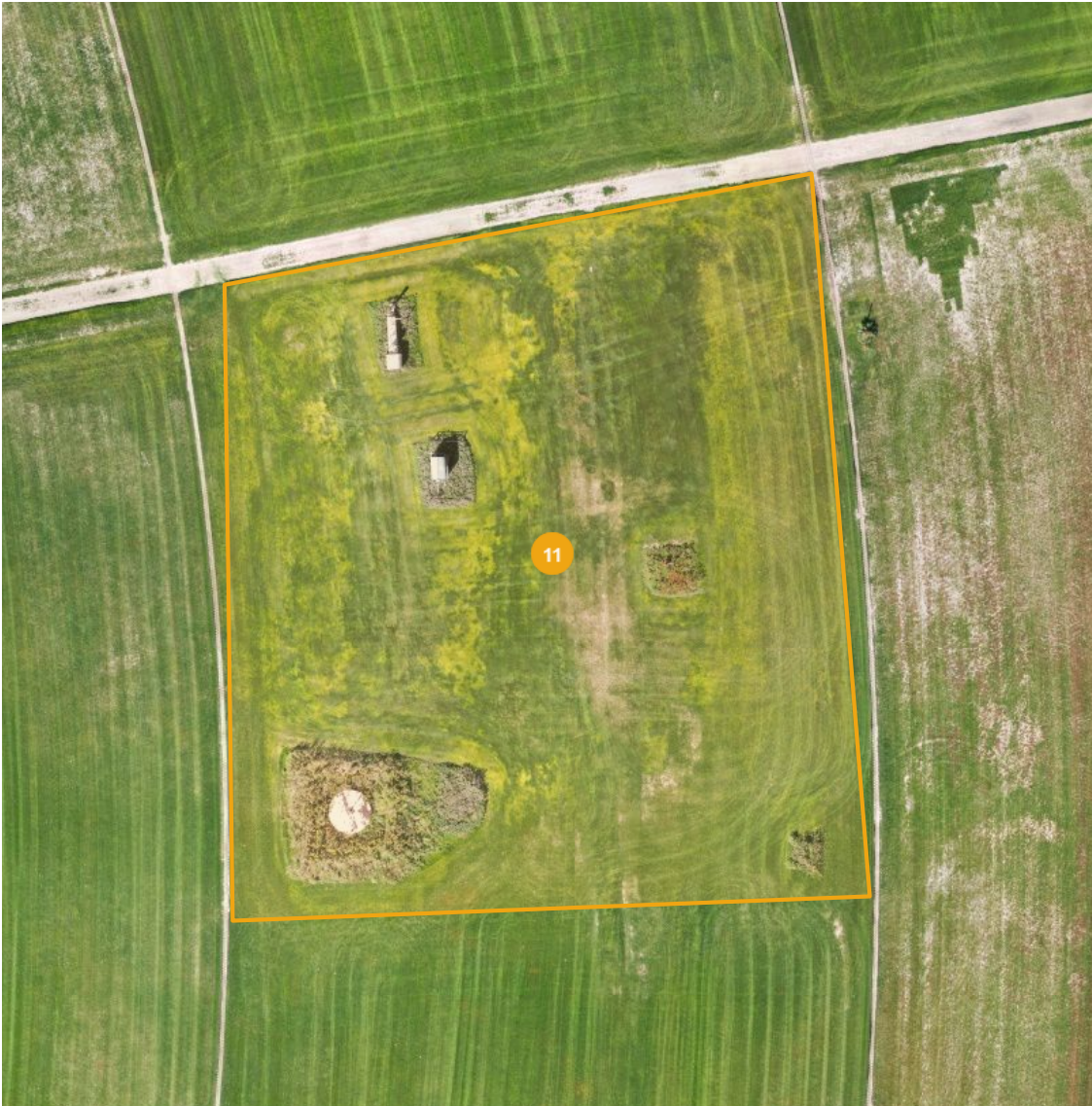
**Total: \$0.00**

11 - Observation

Open

5 - Critical

Sep 21, 2023 at 2:35pm



Details

Summary:	Plant Die-off
Created:	Sep 21, 2023, 8:21pm by Adam Burns
Cost of Repair:	—
Lat/Long:	40.12934, -104.35505
Area:	0.73 acres
Surface area:	0.74 acres

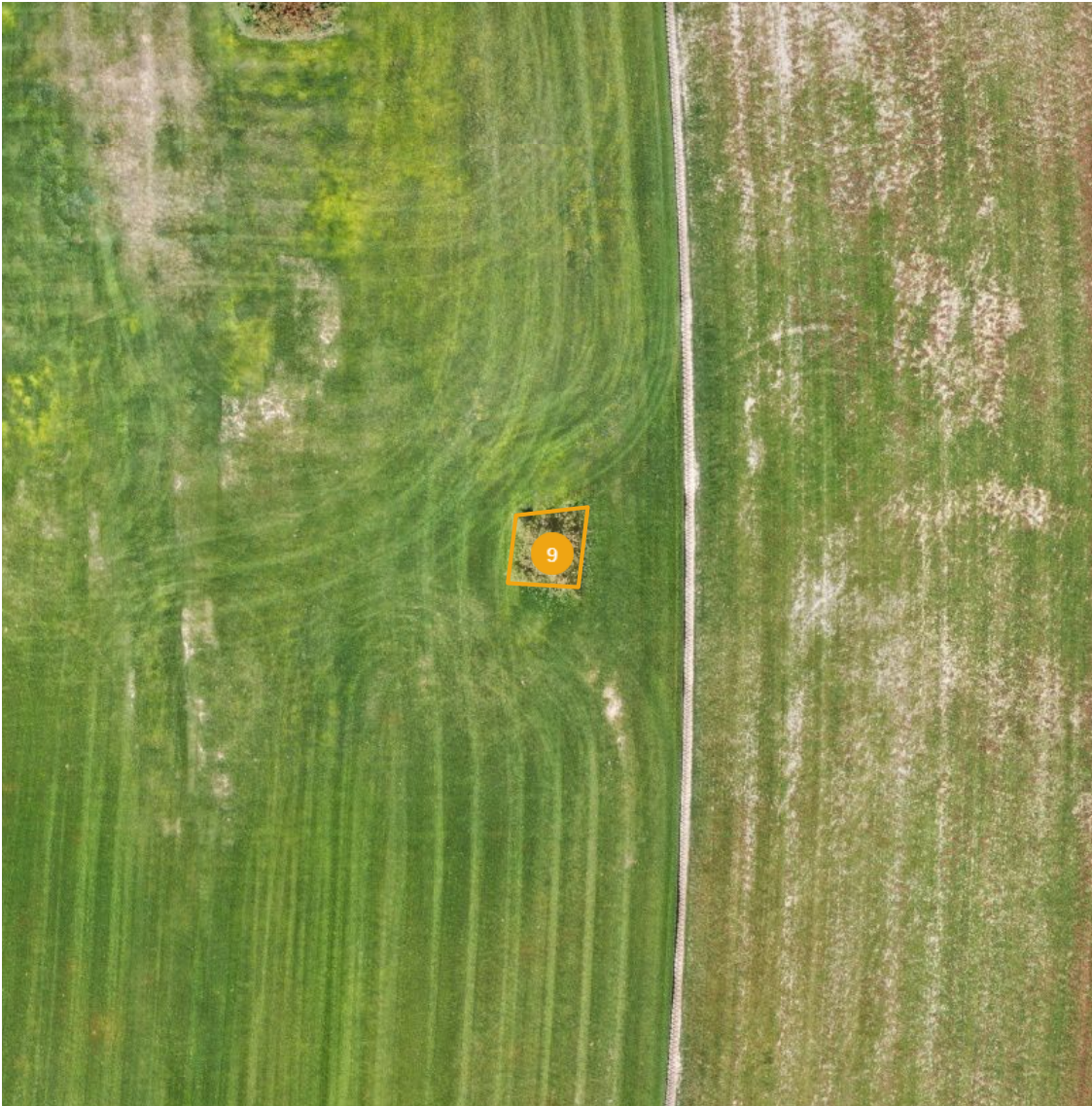


9 - Observation

Open

3 - Moderate

Sep 21, 2023 at 2:35pm



Details

Summary:

Created:

Cost of Repair:

Lat/Long:

Area:

Surface area:

Overgrown Vegetation

Sep 21, 2023, 8:12pm by Adam Burns

—

40.12913, -104.35478

99.98 ft<sup>2</sup>

119.00 ft<sup>2</sup>

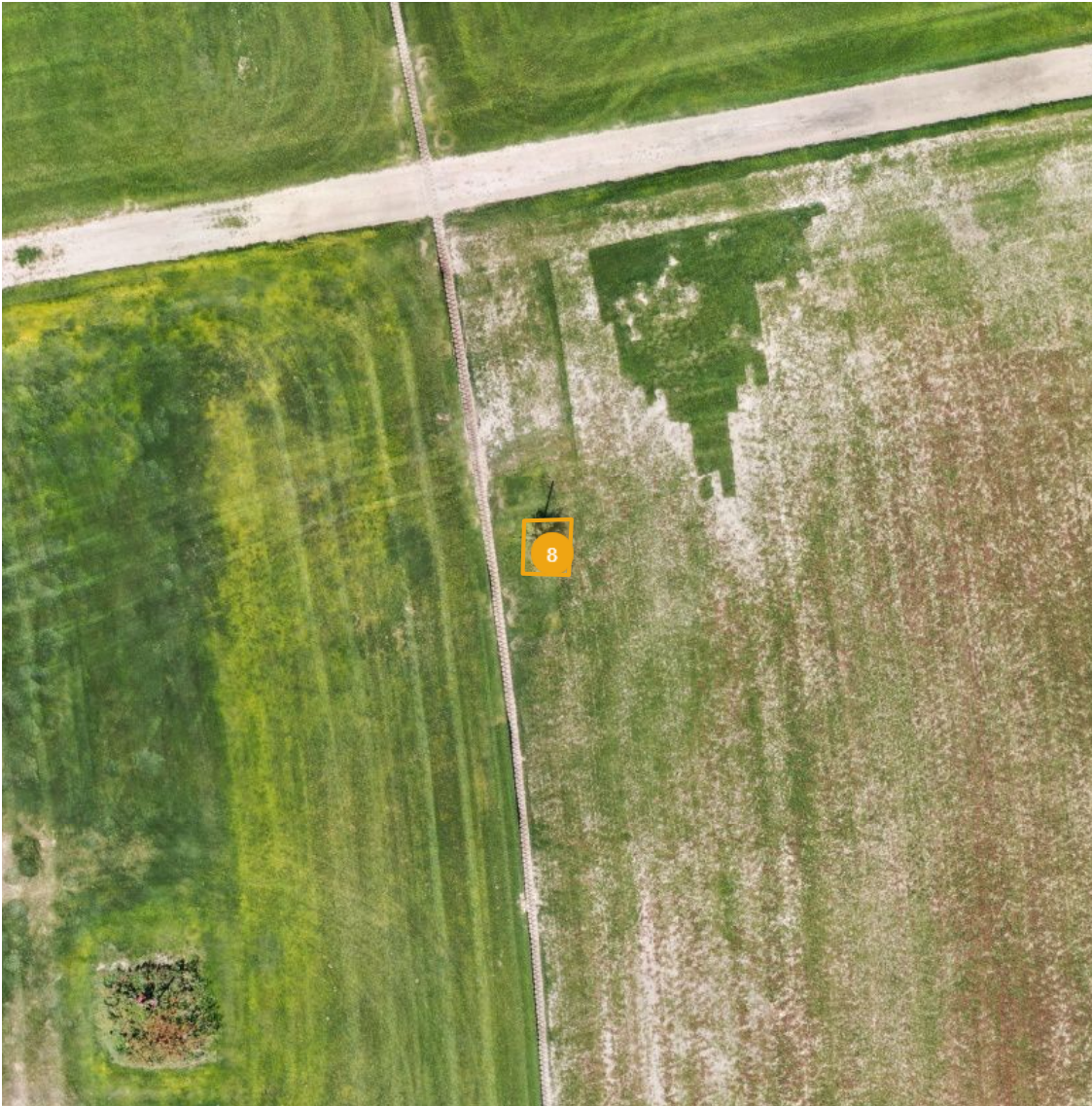


8 - Observation

Open

3 - Moderate

Sep 21, 2023 at 2:35pm



Details

Summary:	Overgrown Vegetation
Created:	Sep 21, 2023, 8:12pm by Adam Burns
Cost of Repair:	—
Lat/Long:	40.12951, -104.35472
Area:	48.39 ft²
Surface area:	57.49 ft²

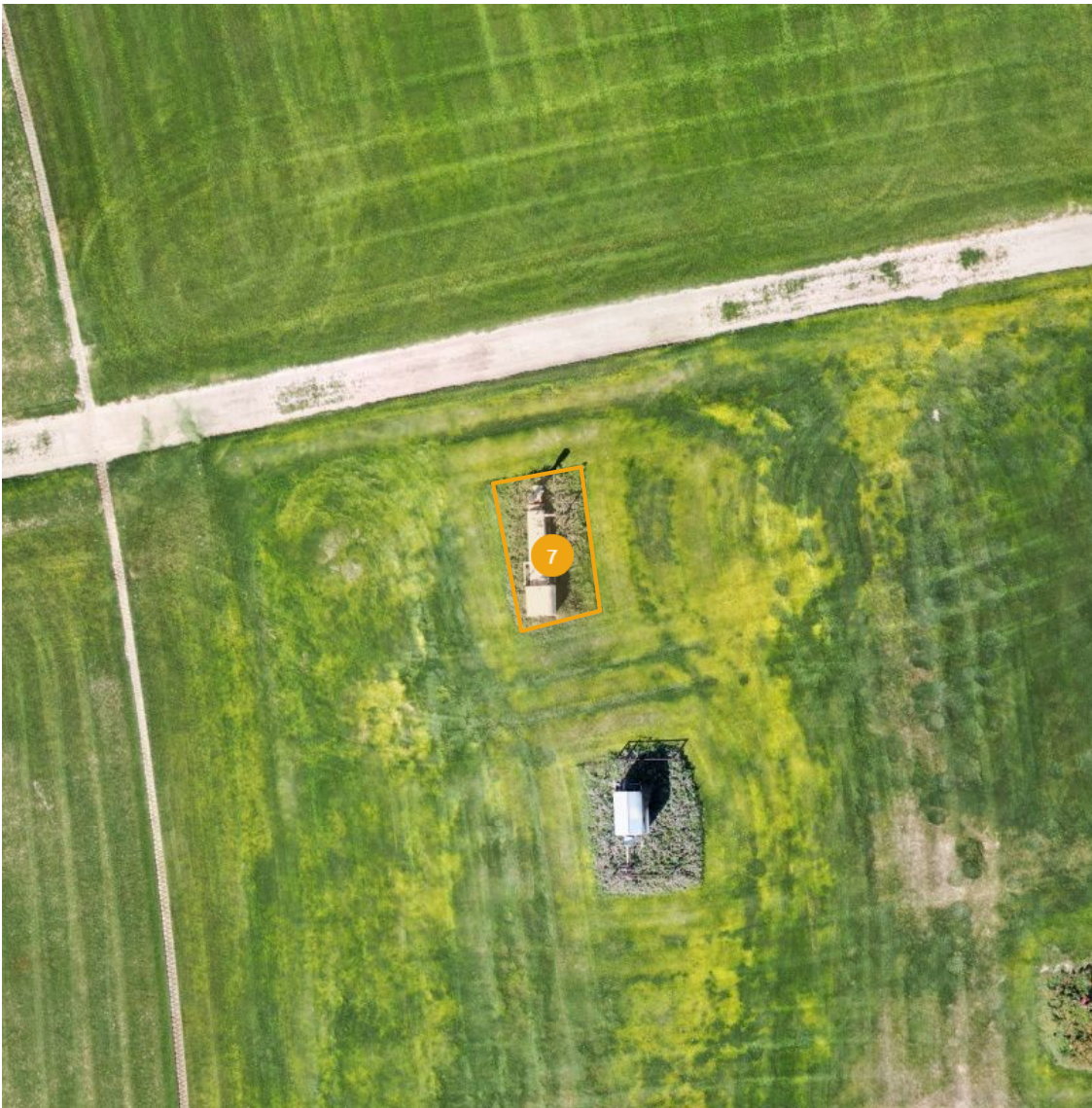


7 - Observation

Open

3 - Moderate

Sep 21, 2023 at 2:35pm



Details

Summary:

Created:

Cost of Repair:

Lat/Long:

Area:

Surface area:

Overgrown Vegetation

Sep 21, 2023, 8:11pm by Adam Burns

—

40.12952, -104.35519

240.09 ft²

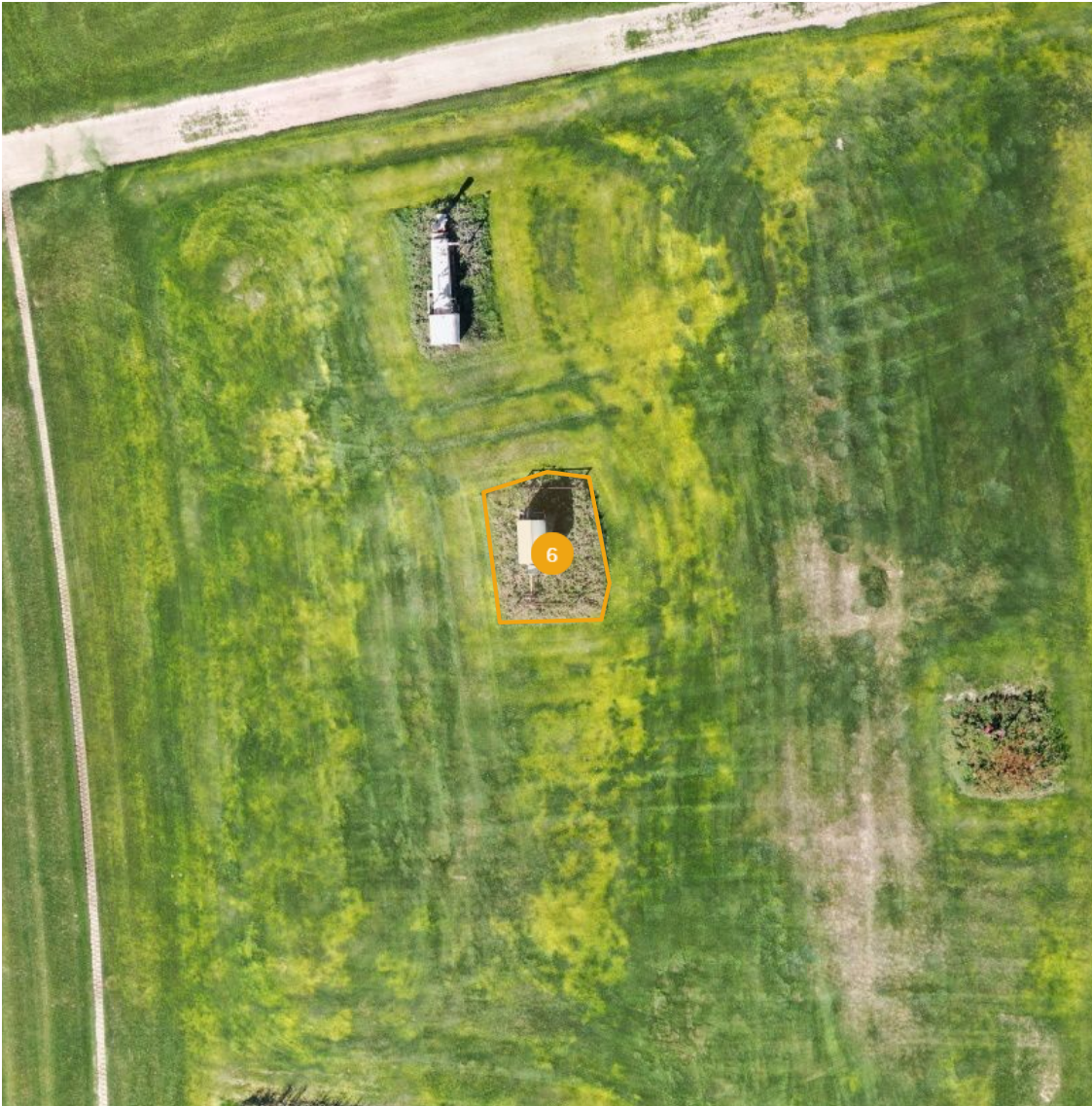
313.57 ft²

6 - Observation

Open

3 - Moderate

Sep 21, 2023 at 2:35pm



Details

Summary:

Created:

Cost of Repair:

Lat/Long:

Area:

Surface area:

Overgrown Vegetation
Sep 21, 2023, 8:11pm by Adam Burns
—
40.12941, -104.35514
298.71 ft <sup>2</sup>
414.10 ft <sup>2</sup>



5 - Observation

Open

3 - Moderate

Sep 21, 2023 at 2:35pm



Details

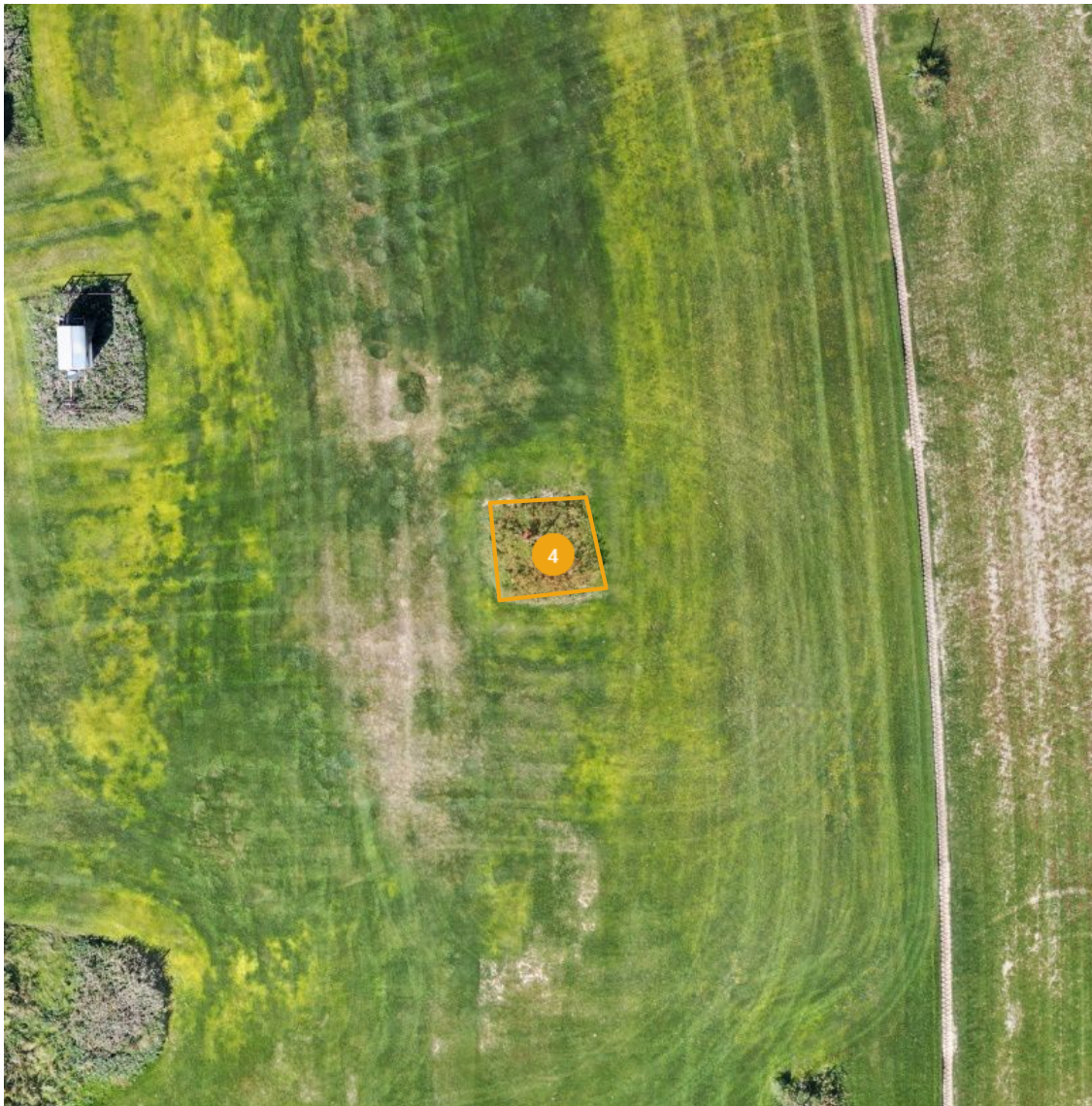
Summary:	Overgrown Vegetation
Created:	Sep 21, 2023, 8:10pm by Adam Burns
Cost of Repair:	—
Lat/Long:	40.12915, -104.35519
Area:	1728.08 ft²
Surface area:	2018.73 ft²

4 - Observation

Open

3 - Moderate

Sep 21, 2023 at 2:35pm



Details

Summary:

Created:

Cost of Repair:

Lat/Long:

Area:

Surface area:

Overgrown Vegetation

Sep 21, 2023, 8:08pm by Adam Burns

40.12934, -104.35491

185.27 ft<sup>2</sup>

201.86 ft<sup>2</sup>