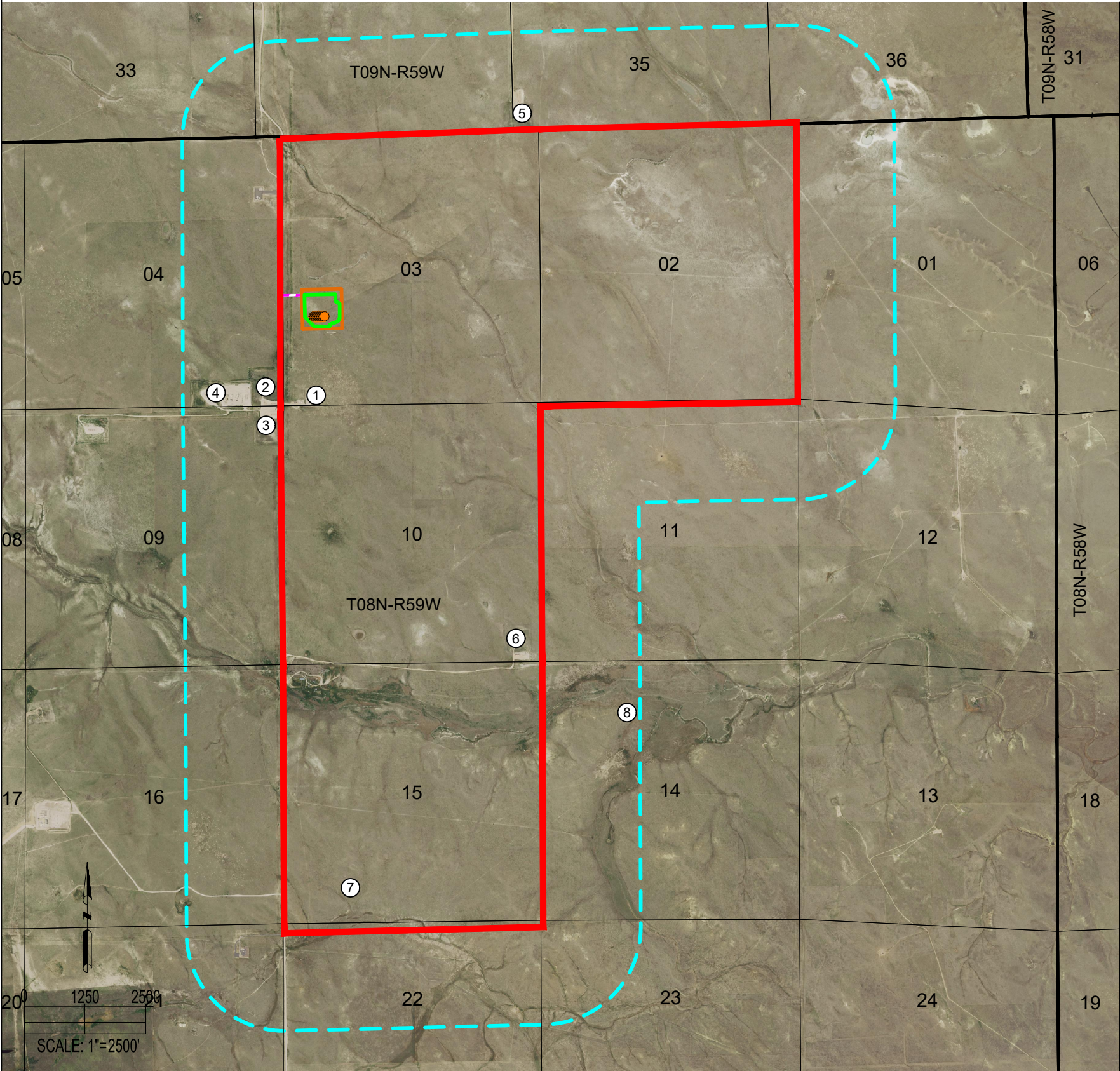


BOOMHOG 8-59 3 PAD
RELATED LOCATION & FLOWLINE MAP



Number	Location ID	Location Name	Location Status	Operator
1	425346	McClellan PC /LG03-78HN	AC	NOBLE ENERGY INC
2	435720	BULLEIT FEDERAL PC LG /04-62HN	AC	NOBLE ENERGY INC
3	432140	MCCLELLAN /LG09-72HN	AC	NOBLE ENERGY INC
4	457009	LG /04-15 MULTI	AC	NOBLE ENERGY INC
5	433165	CASTOR /LC35-62HN	AC	NOBLE ENERGY INC
6	422866	Horse Ditch /05-10H	AC	NOBLE ENERGY INC
7	475207	Mason 8-59 /15	AC	CIVITAS NORTH LLC
8	461610	Castor Fed 8-59 /14	AC	MORNING GUN EXPLORATION LLC

DATA SOURCE:
AERIAL IMAGERY: NAIP 2021
WELLS/APPROVED LOCATIONS: ECMC

PUBLICLY AVAILABLE DATA SOURCES HAVE NOT
BEEN INDEPENDENTLY VERIFIED BY ASCENT.

DISCLAIMER:
THIS PLOT DOES NOT REPRESENT A MONUMENTED LAND SURVEY AND SHOULD NOT BE RELIED UPON TO DETERMINE BOUNDARY LINES.
PROPERTY OWNERSHIP OR OTHER PROPERTY INTERESTS, PARCEL LINES, IF DEPICTED HAVE NOT BEEN FIELD VERIFIED AND MAY BE BASED
UPON PUBLICLY AVAILABLE DATA THAT ALSO HAS NOT BEEN INDEPENDENTLY VERIFIED.



FIELD
DATE:
10-13-22

DRAWN BY:
CSG

DRAWING
DATE:
08-24-23

CHECKED BY:
HJL

SITE NAME:
BOOMHOG 8-59 3 PAD

SURFACE LOCATION:
NW 1/4 SW 1/4 SEC. 3, T8N, R59W, 6TH P.M.
WELD COUNTY, COLORADO

LEGEND:

- = PROPOSED WELL
- = ACTIVE LOCATION
- = 2000' RADIUS FROM OGD
- = WORKING PAD SURFACE
- = OIL & GAS LOCATION
- = OGD BOUNDARY
- = PROPOSED ACCESS ROAD
- = SECTION LINE
- = TOWNSHIP LINE

