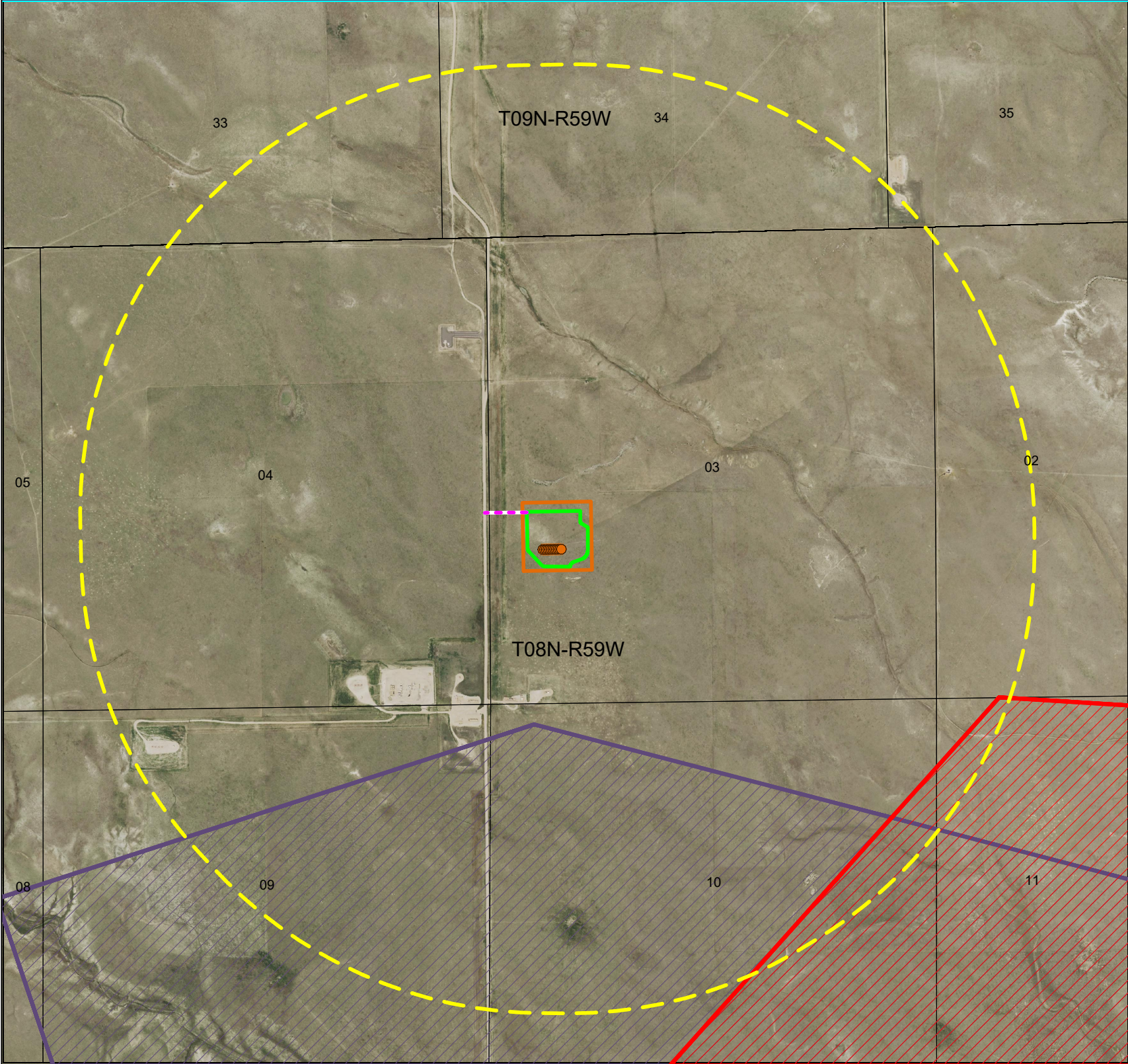
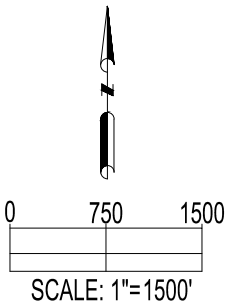


BOOMHOG 8-59 3 PAD  
WILDLIFE HABITAT DRAWING



WILDLIFE HABITAT: (AS MEASURED FROM THE PROPOSED WORKING PAD SURFACE)	
THERE ARE HIGH PRIORITY HABITATS WITHIN THE ONE MILE RADIUS	
MULE DEER WINTER CONCENTRATION:	±4756' SE
MULE DEER SEVERE WINTER RANGE:	±1870' S

DISTURBED AREAS: (AMOUNT OF DISTURBED ACREAGE WITHIN THE HIGH PRIORITY HABITAT)	
PROPOSED ACCESS ROAD:	0.0
PROPOSED OIL & GAS LOCATION:	0.0
TOTAL:	0.0



DISCLAIMER:  
THIS PLOT DOES NOT REPRESENT A MONUMENTED LAND SURVEY AND SHOULD NOT BE RELIED UPON TO DETERMINE BOUNDARY LINES.  
PROPERTY OWNERSHIP OR OTHER PROPERTY INTERESTS, IF DEPICTED HAVE NOT BEEN FIELD VERIFIED AND MAY BE BASED  
UPON PUBLICLY AVAILABLE DATA THAT ALSO HAS NOT BEEN INDEPENDENTLY VERIFIED.



FIELD DATE: 10-13-22	DRAWING DATE: 06-22-23
DRAWN BY: HJL	CHECKED BY: CSG

SITE NAME: BOOMHOG 8-59 3 PAD
SURFACE LOCATION: NW 1/4 SW 1/4 SEC. 3, T8N, R59W, 6TH P.M. WELD COUNTY, COLORADO

DATA SOURCE:  
AERIAL IMAGERY: NAIP 2021  
WILDLIFE HABITAT: COGCC  
  
PUBLICLY AVAILABLE DATA SOURCES HAVE NOT  
BEEN INDEPENDENTLY VERIFIED BY ASCENT.

LEGEND:	
	= PROPOSED WELL
	= SECTION LINE
	= TOWNSHIP LINE
	= PROPOSED ACCESS ROAD

	= 5280' BUFFER FROM WPS		= HIGH PRIORITY HABITAT - MULE DEER WINTER CONCENTRATION
	= OIL & GAS LOCATION		= HIGH PRIORITY HABITAT - MULE DEER SEVERE WINTER RANGE
	= WORKING PAD SURFACE		

