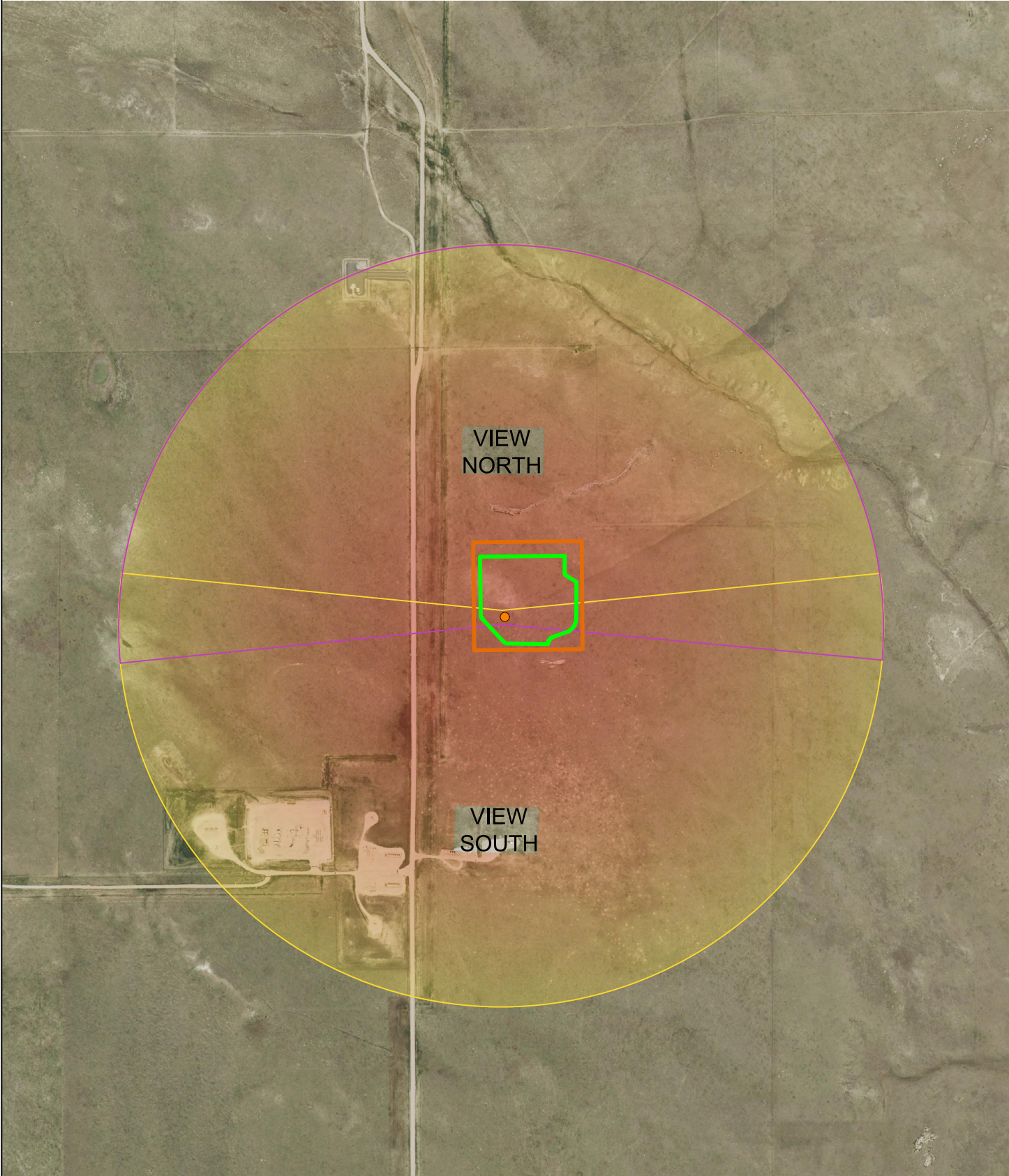


BOOMHOG 8-59 3 PAD
LOCATION PICTURES



LOCATION PICTURES:

NORTH VIEW (PANORAMIC)



SOUTH VIEW (PANORAMIC)



ALL PHOTOS WERE TAKEN ON 8/18/22.
REFERENCE POINT PHOTOS WERE TAKEN FROM THE PROPOSED BOOMHOG 8-59 3-1 WELL LOCATION.

REFERENCE LOCATION

BOOMHOG 8-59 3-1

LAT: 40.689368° N
LONG: 103.969284° W
ELEVATION: 4827'
1922' FSL & 685' FWL
PDOP: 2.3
GPS OPERATOR: STEVE ROERIG

DISCLAIMER:
THIS PLOT DOES NOT REPRESENT A MONUMENTED LAND SURVEY AND SHOULD NOT BE RELIED UPON TO DETERMINE BOUNDARY LINES,
PROPERTY OWNERSHIP OR OTHER PROPERTY INTERESTS. PARCEL LINES, IF DEPICTED HAVE NOT BEEN FIELD VERIFIED AND MAY BE BASED
UPON PUBLICLY AVAILABLE DATA THAT ALSO HAS NOT BEEN INDEPENDENTLY VERIFIED.

LEGEND:



= REFERENCE POINT



= FIELD OF VIEW - NORTH



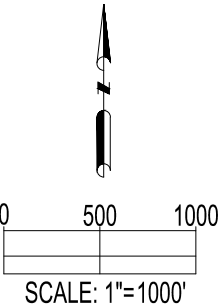
= FIELD OF VIEW - SOUTH



= OIL & GAS LOCATION



= WORKING PAD SURFACE



PREPARED FOR:



FIELD
DATE:
10-13-22

DRAWING
DATE:
06-22-23

DRAWN BY:
HJL

CHECKED BY:
CSG

SITE NAME:
BOOMHOG 8-59 3 PAD
SURFACE LOCATION:
NW 1/4 SW 1/4 SEC. 3, T8N, R59W, 6TH P.M.
WELD COUNTY, COLORADO

DATA SOURCE:
AERIAL IMAGERY: NAIP 2021

PUBLICLY AVAILABLE DATA SOURCES HAVE NOT
BEEN INDEPENDENTLY VERIFIED BY ASCENT.