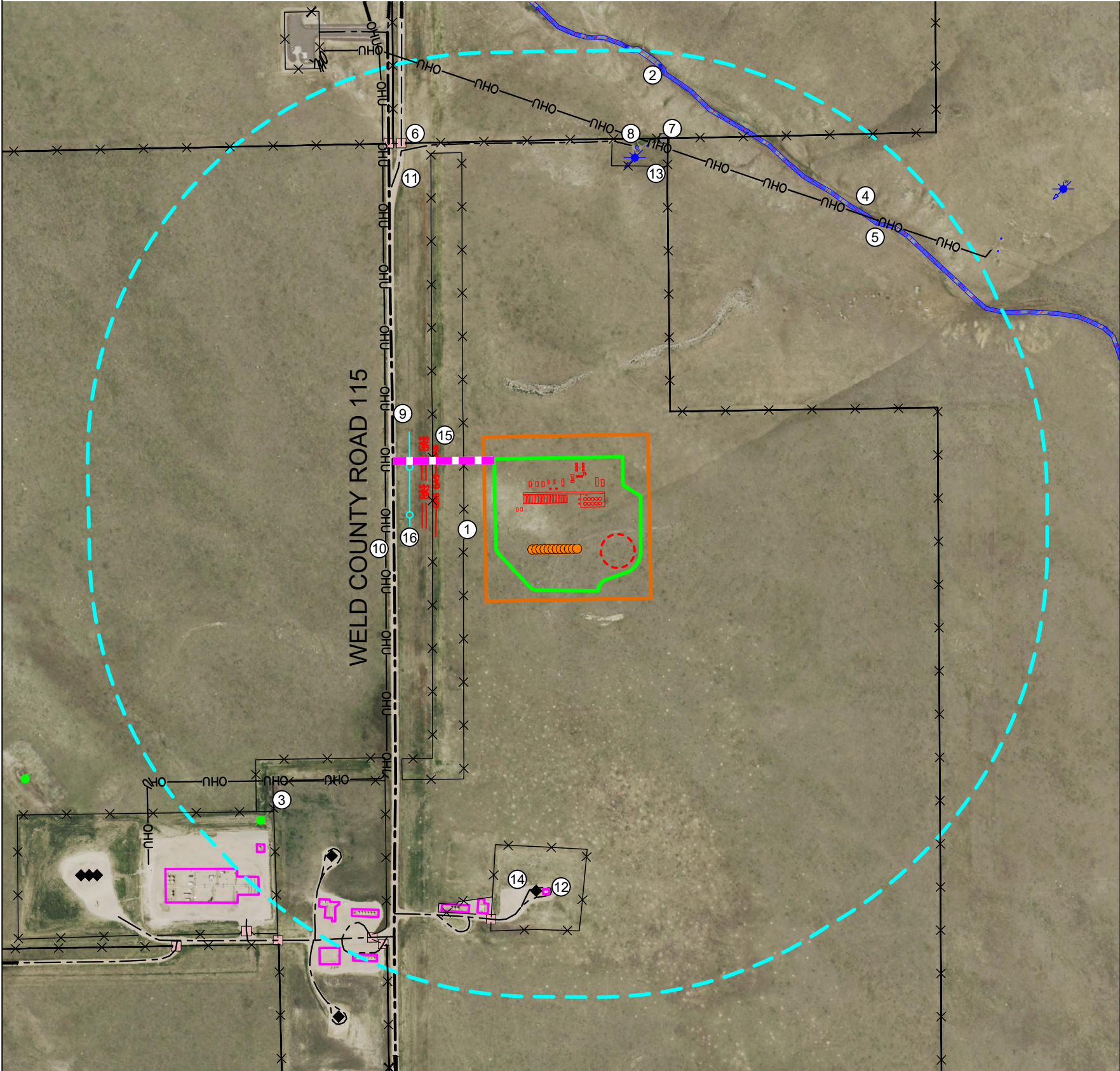
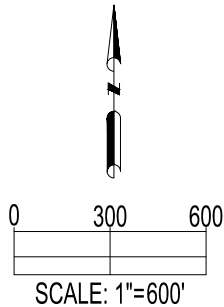


BOOMHOG 8-59 3 PAD  
LOCATION DRAWING



IMPROVEMENTS: (AS MEASURED FROM THE PROPOSED WORKING PAD SURFACE)	
1. FENCE:	±150' W, ±309' W, ±323' NE, ±1102' SW, ±1189' SW, ±1260' S, ±1431' N, ±1561' N, ±1629' NW, ±1640' NW, ±1675' SW
2. PERMANENTLY FLOODED RIVERINE WETLAND:	±1924' N
3. ABANDONED OIL & GAS WELL:	±1750' SW
4. INTERMITTENT STREAM:	±1641' NE
5. SEASONALLY FLOODED INTERMITTENT RIVERINE WETLAND:	±1631' NE
6. CATTLE GUARD:	±1619' NW, ±1633' S, ±1636' NW, ±1886' SW, ±1893' SW
7. GATE:	±1579' N
8. WATER TROUGH:	±1515' N, ±1528' N
9. WELD COUNTY ROAD 115	±485' W
10. OVERHEAD UTILITY:	±535' W, ±1506' NE
11. PRIVATE ROAD:	±1404' NW, ±1462' S, ±1532' N, ±1602' SW, ±1840' SW, ±2148' SW
12. EXISTING FACILITY:	±1470' S, ±1539' S, ±1583' SW, ±1750' SW, ±1810' SW, ±1819' SW, ±1953' SW, ±1955' SW
13. WATER WELL:	±1472' N
14. EXISTING OIL & GAS WELL:	±1479' S, ±1642' SW
15. UNDERGROUND GAS LINE:	±356' W, ±335' W, ±287' W, ±285' W
16. UNDERGROUND FIBER OPTIC CABLE:	±416' W



DATA SOURCE:  
AERIAL IMAGERY: NAIP 2019  
WATER WELLS: COLORADO DWR  
NHD: USGS  
  
PUBLICLY AVAILABLE DATA SOURCES HAVE NOT  
BEEN INDEPENDENTLY VERIFIED BY ASCENT.

**OIL & GAS SURFACE ACREAGE:**  
  
15.0 ACRES OIL & GAS LOCATION  
9.6 ACRES WORKING PAD SURFACE  
10.6 ACRES INTERIM RECLAIM

DISCLAIMER:  
THIS PLOT DOES NOT REPRESENT A MONUMENTED LAND SURVEY AND SHOULD NOT BE RELIED UPON TO DETERMINE BOUNDARY LINES.  
PROPERTY OWNERSHIP OR OTHER PROPERTY INTERESTS, PARCEL LINES, IF DEPICTED HAVE NOT BEEN FIELD VERIFIED AND MAY BE BASED  
UPON PUBLICLY AVAILABLE DATA THAT ALSO HAS NOT BEEN INDEPENDENTLY VERIFIED.

**REFERENCE LOCATION**  
  
\*\*BOOMHOG 8-59 3-1\*\*  
  
LAT: 40.689368° N  
LONG: 103.969284° W  
ELEVATION: 4827'  
1922' FSL & 685' FWL  
PDOP: 2.3  
GPS OPERATOR: STEVE ROERIG

CURRENT SURFACE USE: RANGELAND  
FUTURE SURFACE USE: RANGELAND



FIELD  
DATE:  
10-13-22  
  
DRAWN BY:  
HJL

DRAWING  
DATE:  
06-22-23  
  
CHECKED BY:  
CSG

SITE NAME:  
BOOMHOG 8-59 3 PAD  
SURFACE LOCATION:  
NW 1/4 SW 1/4 SEC. 3, T8N, R59W, 6TH P.M.  
WELD COUNTY, COLORADO

**LEGEND:**  
  
● = PROPOSED WELL  
✕ = FENCE  
—OHU— = OVERHEAD UTILITY  
  
● = PLUGGED & ABANDONED WELL  
★ = WATER WELL  
◆ = EXISTING WELL

—UGG— = UNDERGROUND GAS LINE  
— = UNDERGROUND FIBER OPTIC CABLE  
— = PROPOSED ACCESS ROAD  
— = PRIVATE ROAD  
— = PUBLIC ROAD

— = PROPOSED MLVT  
— = 2000' BUFFER FROM WPS  
— = GATE  
— = WETLAND  
— = INTERMITTENT STREAM

● = WATER TROUGH  
— = PROPOSED FACILITY  
— = OIL & GAS LOCATION

— = EXISTING FACILITY  
— = WORKING PAD SURFACE  
— = CATTLE GUARD

