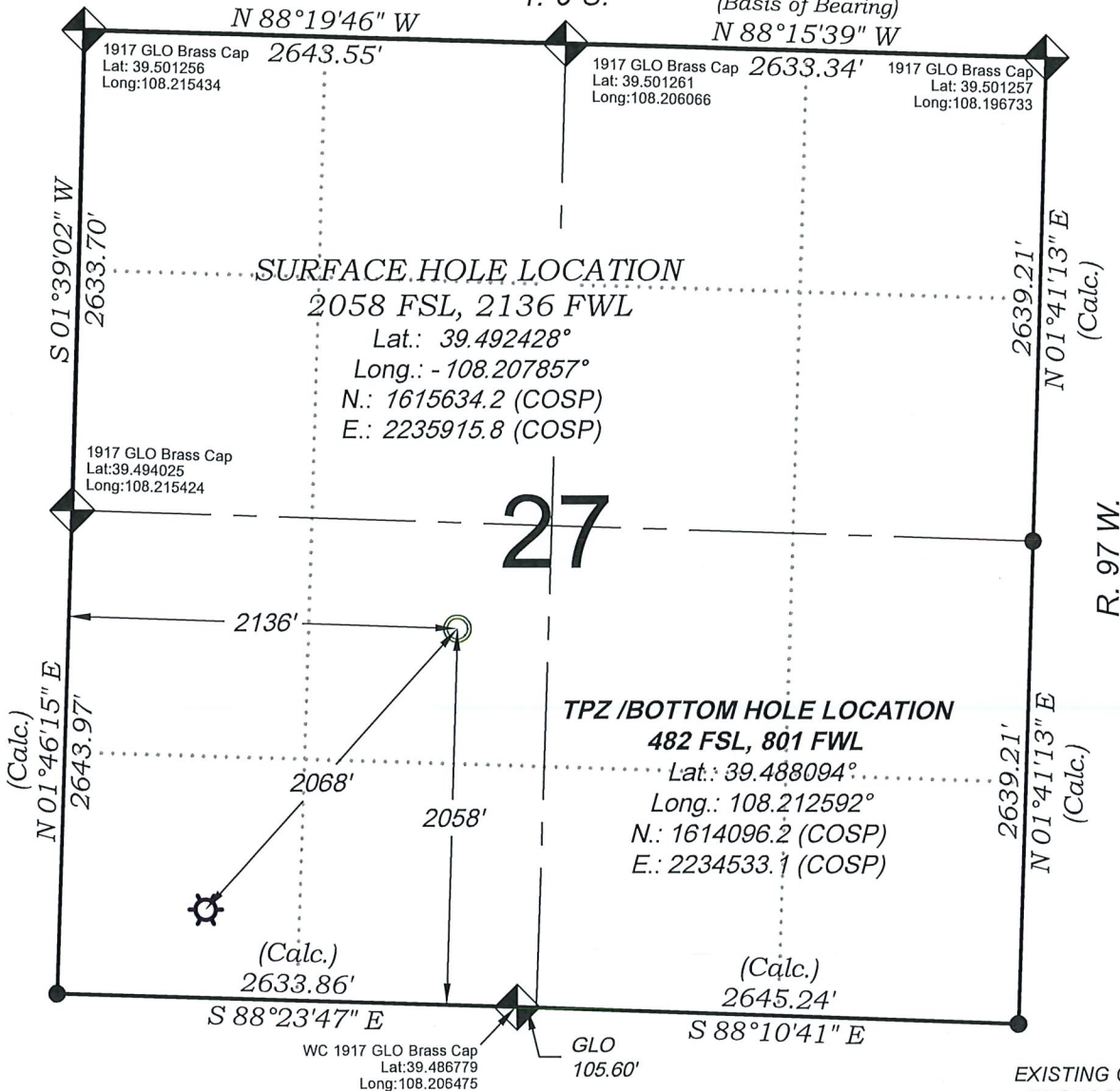


Kelton WGV 414-27-697

T. 6 S.

(Basis of Bearing)



SURFACE HOLE LOCATION

2058 FSL, 2136 FWL

Lat.: 39.492428°
 Long.: -108.207857°
 N.: 1615634.2 (COSP)
 E.: 2235915.8 (COSP)

27

TPZ / BOTTOM HOLE LOCATION

482 FSL, 801 FWL

Lat.: 39.488094°
 Long.: 108.212592°
 N.: 1614096.2 (COSP)
 E.: 2234533.1 (COSP)

EXISTING GROUND ELEV.: 8386.6
 PROPOSED PAD ELEV.: 8381.7

SEE LOCATION DRAWING PLAT
 FOR VISIBLE IMPROVEMENTS
 WITHIN 2000' OF THIS LOCATION

SURVEYORS STATEMENT

I, MICHAEL J. LANGHORNE, A REGISTERED LAND SURVEYOR IN THE STATE OF COLORADO DO HEREBY CERTIFY THAT THE SURVEY SHOWN HEREON WAS PREPARED UNDER MY DIRECT SUPERVISION AND HAS BEEN STAKED ON THE GROUND AS SHOWN ON THE PLAT AND CHECKING THAT THIS MAP IS A TRUE REPRESENTATION THEREOF.

Michael J. Langhorne
 36572

MICHAEL J. LANGHORNE, COLORADO REGISTRATION NO. 36572
 FOR AND ON BEHALF OF
 BOOKCLIFF SURVEY SERVICES, INC.

REFERENCES

- 1) Independent Resurvey T. 6 S., R. 97 W., 6th P.M (GLO PLAT)
- 2) U.S.G.S. QUAD: Circle Dot Gulch and Red Pinnacle, CO

REVISED: 12/05/22

136 East Third Street
 Rifle, Colorado
 81650 Ph. (970)
 625-2720 Fax (970)
 625-2773



BOOKCLIFF
 Survey Services, Inc.

SURVEY DATE: 7/06/22
 MAP DATE: 7/07/22
 SCALE: 1" = 1000'
 PROJECT: TEP Trail Ridge

- LEGEND -

FIELD LOCATED SECTION MONUMENTS AS DESCRIBED

FIELD SURVEYED WELL LOCATION

CALCULATED TOP OF PRODUCTION ZONE / BOTTOM HOLE LOCATION

CALCULATED SECTION CORNER LOCATION

NOTES

- 1) ELEVATIONS BASED ON N.A.V.D. 1988 PUBLISHED COORDINATES.
- 2) LATITUDES AND LONGITUDES ARE BASED ON NAD 83, PUBLISHED COORDINATES
- 3) STATE PLANE COORDINATES ARE BASED ON COLORADO CENTRAL ZONE, U.S. SURVEY FEET.
- 4) ELEVATION MASK SET TO 15°
- 5) GPS OPERATOR W. KIRKPATRICK, OBSERVED A PDOP 2.8 ON SURVEY POINT NUMBER 402.
- 6) SURFACE AND BOTTOM HOLE LOCATIONS ARE MEASURED 90° FROM SECTION LINES.

WELL LOCATION PLAT Prepared for:



TEP Rocky Mountain LLC

NE1/4 SW1/4, SECTION 27
 T. 6 S., R. 97 W. of the 6th. P.M.
 GARFIELD COUNTY, COLORADO