

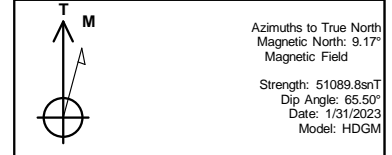


REFERENCE INFORMATION

Co-ordinate (N/E) Reference: Well WGV 311-27-697 - Slot WGV 311-27-697, True North  
 Vertical (TVD) Reference: RKB @ 30' @ 8412.0ft  
 Section (VS) Reference: Slot - WGV 311-27-697(0.0N, 0.0E)  
 Measured Depth Reference: RKB @ 30' @ 8412.0ft  
 Calculation Method: Minimum Curvature

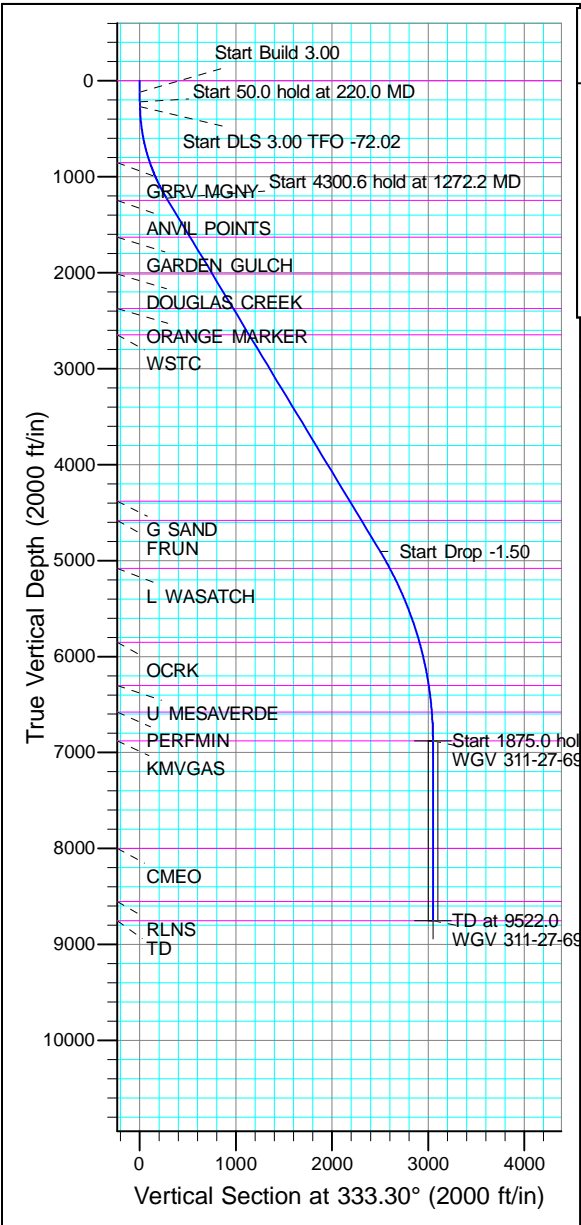


Project: Garfield County, CO (Nad 83)  
 Site: Acro Deep 1-27  
 Well: WGV 311-27-697  
 Wellbore: OWB  
 Design: Plan



WELL DETAILS: WGV 311-27-697

+N/-S	+E/-W	Northing	Easting	Ground Level:	8382.0	Latitude	Longitude
0.0	0.0	1615674.400	2235949.600			39.492541	-108.207742 WGV 311-27-697



SECTION DETAILS

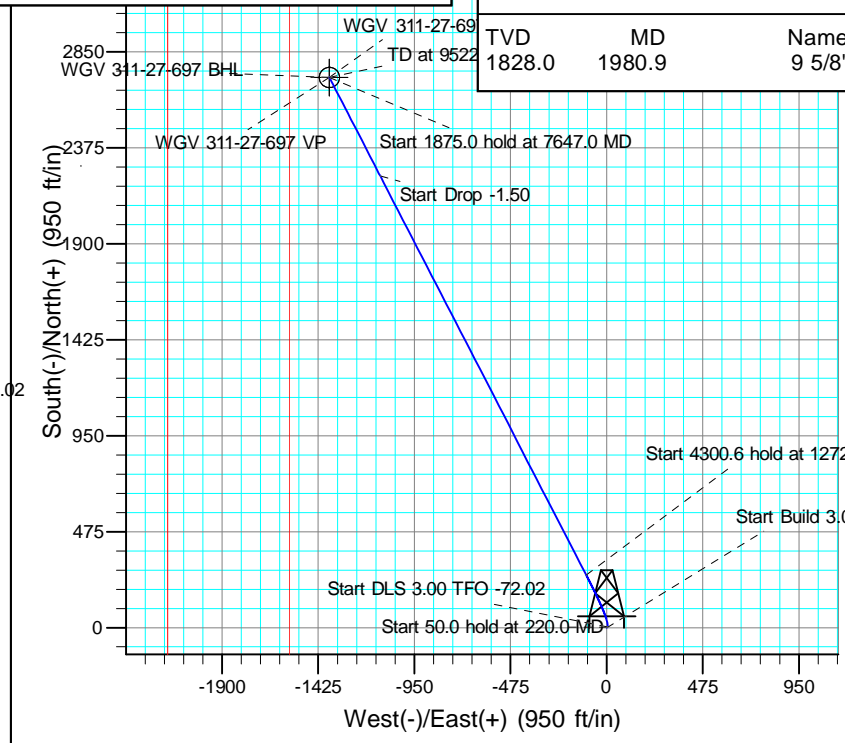
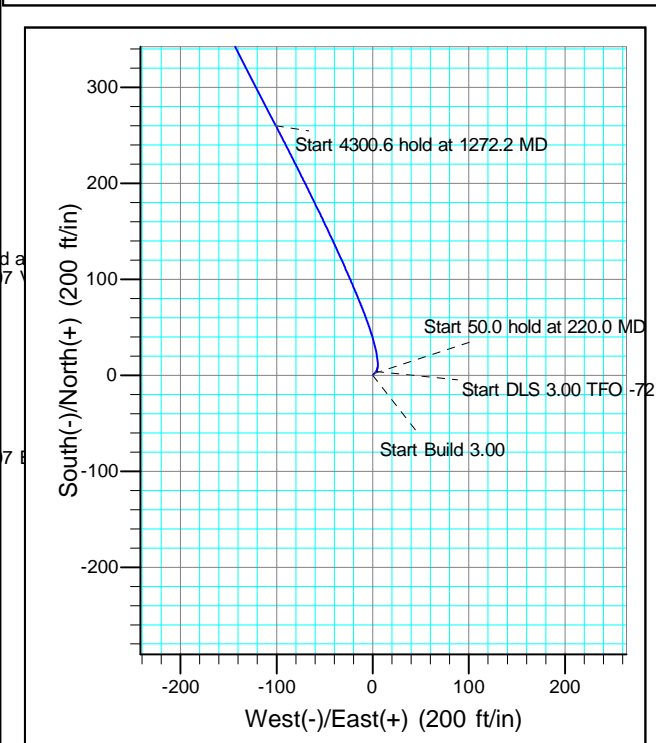
MD	Inc	Azi	TVD	+N/-S	+E/-W	Dleg	TFace	VSect	Annotation
0.0	0.00	0.00	0.0	0.0	0.0	0.00	0.00	0.0	
120.0	0.00	0.00	120.0	0.0	0.0	0.00	0.00	0.0	Start Build 3.00
220.0	3.00	40.00	220.0	2.0	1.7	3.00	40.00	1.0	Start 50.0 hold at 220.0 MD
270.0	3.00	40.00	269.9	4.0	3.4	0.00	0.00	2.1	Start DLS 3.00 TFO -72.02
1272.2	31.11	332.74	1221.3	260.2	-100.8	3.00	-72.02	277.7	Start 4300.6 hold at 1272.2 MD
5572.8	31.11	332.74	4903.3	2235.6	-1118.5	0.00	0.00	2499.8	Start Drop -1.50
7647.0	0.00	0.00	6877.0	2724.1	-1370.1	1.50	180.00	3049.2	Start 1875.0 hold at 7647.0 MD
9522.0	0.00	0.00	8752.0	2724.1	-1370.1	0.00	0.00	3049.2	TD at 9522.0

FORMATION TOP DETAILS

VDPath	MDPath	Formation
0.0	0.0	
851.0	862.9	GRRV MGNV
1245.0	1299.9	ANVIL POINTS
1628.0	1747.3	GARDEN GULCH
2011.0	2194.6	DOUGLAS CREEK
2372.0	2616.3	ORANGE MARKER
2648.0	2938.7	WSTC
4382.0	4964.0	G SAND
4582.0	5197.6	FRUN
5082.0	5778.4	L WASATCH
5852.0	6609.3	OCRK
6302.0	7069.8	U MESAVERDE
6577.0	7346.7	PERFMIN
6877.0	7647.0	KMVGAS
7997.0	8767.0	CMEC
8552.0	9322.0	RLNS
8752.0	9522.0	TD

DESIGN TARGET DETAILS

Name	TVD	+N/-S	+E/-W	Northing	Easting	Latitude	Longitude	Shape
VP	6877.0	2724.1	-1370.1	1618438.100	2234661.300	39.500020	-108.212597	Point
BHL	8752.0	2724.1	-1370.1	1618438.100	2234661.300	39.500020	-108.212597	Circle (Radius: 50.0)



CASING DETAILS

TVD	MD	Name
1828.0	1980.9	9 5/8"



# **Terra Energy Partners, LLP**

**Garfield County, CO (Nad 83)**

**Acro Deep 1-27**

**WGV 311-27-697 - Slot WGV 311-27-697**

**OWB**

**Plan: Plan**

## **Standard Planning Report**

**07 March, 2023**



<b>Database:</b>	NN	<b>Local Co-ordinate Reference:</b>	Well WGV 311-27-697 - Slot WGV 311-27-697
<b>Company:</b>	Terra Energy Partners, LLP	<b>TVD Reference:</b>	RKB @ 30' @ 8412.0ft
<b>Project:</b>	Garfield County, CO (Nad 83)	<b>MD Reference:</b>	RKB @ 30' @ 8412.0ft
<b>Site:</b>	Acro Deep 1-27	<b>North Reference:</b>	True
<b>Well:</b>	WGV 311-27-697	<b>Survey Calculation Method:</b>	Minimum Curvature
<b>Wellbore:</b>	OWB		
<b>Design:</b>	Plan		

<b>Project</b>	Garfield County, CO (Nad 83)		
<b>Map System:</b>	US State Plane 1983	<b>System Datum:</b>	Mean Sea Level
<b>Geo Datum:</b>	North American Datum 1983		
<b>Map Zone:</b>	Colorado Central Zone		

<b>Site</b>	Acro Deep 1-27				
<b>Site Position:</b>		<b>Northing:</b>	1,615,634.200 usft	<b>Latitude:</b>	39.492428
<b>From:</b>	Map	<b>Easting:</b>	2,235,915.800 usft	<b>Longitude:</b>	-108.207857
<b>Position Uncertainty:</b>	0.0 ft	<b>Slot Radius:</b>	13-3/16 "	<b>Grid Convergence:</b>	-1.71 °

<b>Well</b>	WGV 311-27-697 - Slot WGV 311-27-697					
<b>Well Position</b>	<b>+N/-S</b>	41.2 ft	<b>Northing:</b>	1,615,674.400 usft	<b>Latitude:</b>	39.492541
	<b>+E/-W</b>	32.6 ft	<b>Easting:</b>	2,235,949.600 usft	<b>Longitude:</b>	-108.207742
<b>Position Uncertainty</b>		0.0 ft	<b>Wellhead Elevation:</b>	8,412.0 ft	<b>Ground Level:</b>	8,382.0 ft

<b>Wellbore</b>	OWB				
<b>Magnetics</b>	<b>Model Name</b>	<b>Sample Date</b>	<b>Declination (°)</b>	<b>Dip Angle (°)</b>	<b>Field Strength (nT)</b>
	HDGM	1/31/2023	9.17	65.50	51,090

<b>Design</b>	Plan			
<b>Audit Notes:</b>				
<b>Version:</b>	<b>Phase:</b>	PROTOTYPE	<b>Tie On Depth:</b>	0.0
<b>Vertical Section:</b>	<b>Depth From (TVD) (ft)</b>	<b>+N/-S (ft)</b>	<b>+E/-W (ft)</b>	<b>Direction (°)</b>
	0.0	0.0	0.0	333.30

<b>Plan Sections</b>										
Measured Depth (ft)	Inclination (°)	Azimuth (°)	Vertical Depth (ft)	+N/-S (ft)	+E/-W (ft)	Dogleg Rate (°/100usft)	Build Rate (°/100usft)	Turn Rate (°/100usft)	TFO (°)	Target
0.0	0.00	0.00	0.0	0.0	0.0	0.00	0.00	0.00	0.00	
120.0	0.00	0.00	120.0	0.0	0.0	0.00	0.00	0.00	0.00	
220.0	3.00	40.00	220.0	2.0	1.7	3.00	3.00	0.00	40.00	
270.0	3.00	40.00	269.9	4.0	3.4	0.00	0.00	0.00	0.00	
1,272.2	31.11	332.74	1,221.3	260.2	-100.8	3.00	2.80	-6.71	-72.02	
5,572.8	31.11	332.74	4,903.3	2,235.6	-1,118.5	0.00	0.00	0.00	0.00	
7,647.0	0.00	0.00	6,877.0	2,724.1	-1,370.1	1.50	-1.50	0.00	180.00	WGV 311-27-697 VP
9,522.0	0.00	0.00	8,752.0	2,724.1	-1,370.1	0.00	0.00	0.00	0.00	WGV 311-27-697 BHI

<b>Database:</b>	NN	<b>Local Co-ordinate Reference:</b>	Well WGV 311-27-697 - Slot WGV 311-27-697
<b>Company:</b>	Terra Energy Partners, LLP	<b>TVD Reference:</b>	RKB @ 30' @ 8412.0ft
<b>Project:</b>	Garfield County, CO (Nad 83)	<b>MD Reference:</b>	RKB @ 30' @ 8412.0ft
<b>Site:</b>	Acro Deep 1-27	<b>North Reference:</b>	True
<b>Well:</b>	WGV 311-27-697	<b>Survey Calculation Method:</b>	Minimum Curvature
<b>Wellbore:</b>	OWB		
<b>Design:</b>	Plan		

Planned Survey										
Measured Depth (ft)	Inclination (°)	Azimuth (°)	Vertical Depth (ft)	+N/-S (ft)	+E/-W (ft)	Vertical Section (ft)	Dogleg Rate (°/100usft)	Build Rate (°/100usft)	Turn Rate (°/100usft)	
0.0	0.00	0.00	0.0	0.0	0.0	0.0	0.00	0.00	0.00	0.00
100.0	0.00	0.00	100.0	0.0	0.0	0.0	0.00	0.00	0.00	0.00
120.0	0.00	0.00	120.0	0.0	0.0	0.0	0.00	0.00	0.00	0.00
<b>Start Build 3.00</b>										
200.0	2.40	40.00	200.0	1.3	1.1	0.7	3.00	3.00	0.00	0.00
220.0	3.00	40.00	220.0	2.0	1.7	1.0	3.00	3.00	0.00	0.00
<b>Start 50.0 hold at 220.0 MD</b>										
270.0	3.00	40.00	269.9	4.0	3.4	2.1	0.00	0.00	0.00	0.00
<b>Start DLS 3.00 TFO -72.02</b>										
300.0	3.39	25.36	299.8	5.4	4.2	2.9	3.00	1.29	-48.82	
400.0	5.61	358.52	399.5	13.0	5.4	9.2	3.00	2.22	-26.83	
500.0	8.33	347.91	498.8	24.9	3.7	20.6	3.00	2.72	-10.61	
600.0	11.19	342.60	597.3	41.3	-0.7	37.2	3.00	2.86	-5.32	
700.0	14.11	339.44	694.9	62.0	-7.9	58.9	3.00	2.92	-3.16	
800.0	17.06	337.35	791.2	86.9	-17.8	85.6	3.00	2.95	-2.09	
900.0	20.02	335.87	886.0	116.1	-30.4	117.4	3.00	2.96	-1.49	
1,000.0	23.00	334.75	979.0	149.4	-45.8	154.0	3.00	2.97	-1.12	
1,100.0	25.97	333.88	1,070.0	186.7	-63.8	195.5	3.00	2.98	-0.87	
1,200.0	28.96	333.17	1,158.8	228.0	-84.3	241.6	3.00	2.98	-0.70	
1,272.2	31.11	332.74	1,221.3	260.2	-100.8	277.7	3.00	2.99	-0.60	
<b>Start 4300.6 hold at 1272.2 MD</b>										
1,300.0	31.11	332.74	1,245.1	272.9	-107.3	292.1	0.00	0.00	0.00	
1,400.0	31.11	332.74	1,330.7	318.9	-131.0	343.7	0.00	0.00	0.00	
1,500.0	31.11	332.74	1,416.3	364.8	-154.7	395.4	0.00	0.00	0.00	
1,600.0	31.11	332.74	1,501.9	410.7	-178.3	447.1	0.00	0.00	0.00	
1,700.0	31.11	332.74	1,587.5	456.7	-202.0	498.7	0.00	0.00	0.00	
1,800.0	31.11	332.74	1,673.1	502.6	-225.7	550.4	0.00	0.00	0.00	
1,900.0	31.11	332.74	1,758.8	548.5	-249.3	602.1	0.00	0.00	0.00	
2,000.0	31.11	332.74	1,844.4	594.5	-273.0	653.8	0.00	0.00	0.00	
2,100.0	31.11	332.74	1,930.0	640.4	-296.6	705.4	0.00	0.00	0.00	
2,200.0	31.11	332.74	2,015.6	686.4	-320.3	757.1	0.00	0.00	0.00	
2,300.0	31.11	332.74	2,101.2	732.3	-344.0	808.8	0.00	0.00	0.00	
2,400.0	31.11	332.74	2,186.8	778.2	-367.6	860.4	0.00	0.00	0.00	
2,500.0	31.11	332.74	2,272.4	824.2	-391.3	912.1	0.00	0.00	0.00	
2,600.0	31.11	332.74	2,358.1	870.1	-415.0	963.8	0.00	0.00	0.00	
2,700.0	31.11	332.74	2,443.7	916.0	-438.6	1,015.4	0.00	0.00	0.00	
2,800.0	31.11	332.74	2,529.3	962.0	-462.3	1,067.1	0.00	0.00	0.00	
2,900.0	31.11	332.74	2,614.9	1,007.9	-486.0	1,118.8	0.00	0.00	0.00	
3,000.0	31.11	332.74	2,700.5	1,053.8	-509.6	1,170.4	0.00	0.00	0.00	
3,100.0	31.11	332.74	2,786.1	1,099.8	-533.3	1,222.1	0.00	0.00	0.00	
3,200.0	31.11	332.74	2,871.8	1,145.7	-557.0	1,273.8	0.00	0.00	0.00	
3,300.0	31.11	332.74	2,957.4	1,191.6	-580.6	1,325.5	0.00	0.00	0.00	
3,400.0	31.11	332.74	3,043.0	1,237.6	-604.3	1,377.1	0.00	0.00	0.00	
3,500.0	31.11	332.74	3,128.6	1,283.5	-627.9	1,428.8	0.00	0.00	0.00	
3,600.0	31.11	332.74	3,214.2	1,329.4	-651.6	1,480.5	0.00	0.00	0.00	
3,700.0	31.11	332.74	3,299.8	1,375.4	-675.3	1,532.1	0.00	0.00	0.00	
3,800.0	31.11	332.74	3,385.4	1,421.3	-698.9	1,583.8	0.00	0.00	0.00	
3,900.0	31.11	332.74	3,471.1	1,467.2	-722.6	1,635.5	0.00	0.00	0.00	
4,000.0	31.11	332.74	3,556.7	1,513.2	-746.3	1,687.1	0.00	0.00	0.00	
4,100.0	31.11	332.74	3,642.3	1,559.1	-769.9	1,738.8	0.00	0.00	0.00	
4,200.0	31.11	332.74	3,727.9	1,605.0	-793.6	1,790.5	0.00	0.00	0.00	
4,300.0	31.11	332.74	3,813.5	1,651.0	-817.3	1,842.1	0.00	0.00	0.00	
4,400.0	31.11	332.74	3,899.1	1,696.9	-840.9	1,893.8	0.00	0.00	0.00	

<b>Database:</b>	NN	<b>Local Co-ordinate Reference:</b>	Well WGV 311-27-697 - Slot WGV 311-27-697
<b>Company:</b>	Terra Energy Partners, LLP	<b>TVD Reference:</b>	RKB @ 30' @ 8412.0ft
<b>Project:</b>	Garfield County, CO (Nad 83)	<b>MD Reference:</b>	RKB @ 30' @ 8412.0ft
<b>Site:</b>	Acro Deep 1-27	<b>North Reference:</b>	True
<b>Well:</b>	WGV 311-27-697	<b>Survey Calculation Method:</b>	Minimum Curvature
<b>Wellbore:</b>	OWB		
<b>Design:</b>	Plan		

Planned Survey										
Measured Depth (ft)	Inclination (°)	Azimuth (°)	Vertical Depth (ft)	+N/-S (ft)	+E/-W (ft)	Vertical Section (ft)	Dogleg Rate (°/100usft)	Build Rate (°/100usft)	Turn Rate (°/100usft)	
4,500.0	31.11	332.74	3,984.8	1,742.8	-864.6	1,945.5	0.00	0.00	0.00	
4,600.0	31.11	332.74	4,070.4	1,788.8	-888.2	1,997.1	0.00	0.00	0.00	
4,700.0	31.11	332.74	4,156.0	1,834.7	-911.9	2,048.8	0.00	0.00	0.00	
4,800.0	31.11	332.74	4,241.6	1,880.6	-935.6	2,100.5	0.00	0.00	0.00	
4,900.0	31.11	332.74	4,327.2	1,926.6	-959.2	2,152.2	0.00	0.00	0.00	
5,000.0	31.11	332.74	4,412.8	1,972.5	-982.9	2,203.8	0.00	0.00	0.00	
5,100.0	31.11	332.74	4,498.5	2,018.4	-1,006.6	2,255.5	0.00	0.00	0.00	
5,200.0	31.11	332.74	4,584.1	2,064.4	-1,030.2	2,307.2	0.00	0.00	0.00	
5,300.0	31.11	332.74	4,669.7	2,110.3	-1,053.9	2,358.8	0.00	0.00	0.00	
5,400.0	31.11	332.74	4,755.3	2,156.3	-1,077.6	2,410.5	0.00	0.00	0.00	
5,500.0	31.11	332.74	4,840.9	2,202.2	-1,101.2	2,462.2	0.00	0.00	0.00	
5,572.8	31.11	332.74	4,903.3	2,235.6	-1,118.5	2,499.8	0.00	0.00	0.00	
<b>Start Drop -1.50</b>										
5,600.0	30.70	332.74	4,926.6	2,248.0	-1,124.9	2,513.8	1.50	-1.50	0.00	
5,700.0	29.20	332.74	5,013.2	2,292.4	-1,147.7	2,563.7	1.50	-1.50	0.00	
5,800.0	27.70	332.74	5,101.1	2,334.8	-1,169.5	2,611.3	1.50	-1.50	0.00	
5,900.0	26.20	332.74	5,190.3	2,375.1	-1,190.3	2,656.7	1.50	-1.50	0.00	
6,000.0	24.70	332.74	5,280.6	2,413.3	-1,210.0	2,699.6	1.50	-1.50	0.00	
6,100.0	23.20	332.74	5,371.9	2,449.4	-1,228.6	2,740.2	1.50	-1.50	0.00	
6,200.0	21.70	332.74	5,464.4	2,483.3	-1,246.1	2,778.4	1.50	-1.50	0.00	
6,300.0	20.20	332.74	5,557.7	2,515.1	-1,262.4	2,814.2	1.50	-1.50	0.00	
6,400.0	18.70	332.74	5,652.0	2,544.7	-1,277.7	2,847.5	1.50	-1.50	0.00	
6,500.0	17.20	332.74	5,747.2	2,572.1	-1,291.8	2,878.3	1.50	-1.50	0.00	
6,600.0	15.70	332.74	5,843.1	2,597.3	-1,304.8	2,906.6	1.50	-1.50	0.00	
6,700.0	14.20	332.74	5,939.7	2,620.3	-1,316.6	2,932.4	1.50	-1.50	0.00	
6,800.0	12.70	332.74	6,036.9	2,640.9	-1,327.3	2,955.7	1.50	-1.50	0.00	
6,900.0	11.20	332.74	6,134.8	2,659.4	-1,336.7	2,976.4	1.50	-1.50	0.00	
7,000.0	9.71	332.74	6,233.1	2,675.5	-1,345.1	2,994.6	1.50	-1.50	0.00	
7,100.0	8.21	332.74	6,331.9	2,689.3	-1,352.2	3,010.1	1.50	-1.50	0.00	
7,200.0	6.71	332.74	6,431.0	2,700.9	-1,358.1	3,023.1	1.50	-1.50	0.00	
7,300.0	5.21	332.74	6,530.5	2,710.1	-1,362.9	3,033.5	1.50	-1.50	0.00	
7,400.0	3.71	332.74	6,630.2	2,717.0	-1,366.4	3,041.2	1.50	-1.50	0.00	
7,500.0	2.21	332.74	6,730.0	2,721.6	-1,368.8	3,046.4	1.50	-1.50	0.00	
7,600.0	0.71	332.74	6,830.0	2,723.8	-1,370.0	3,048.9	1.50	-1.50	0.00	
7,647.0	0.00	0.00	6,877.0	2,724.1	-1,370.1	3,049.2	1.50	-1.50	0.00	
<b>Start 1875.0 hold at 7647.0 MD</b>										
7,700.0	0.00	0.00	6,930.0	2,724.1	-1,370.1	3,049.2	0.00	0.00	0.00	
7,800.0	0.00	0.00	7,030.0	2,724.1	-1,370.1	3,049.2	0.00	0.00	0.00	
7,900.0	0.00	0.00	7,130.0	2,724.1	-1,370.1	3,049.2	0.00	0.00	0.00	
8,000.0	0.00	0.00	7,230.0	2,724.1	-1,370.1	3,049.2	0.00	0.00	0.00	
8,100.0	0.00	0.00	7,330.0	2,724.1	-1,370.1	3,049.2	0.00	0.00	0.00	
8,200.0	0.00	0.00	7,430.0	2,724.1	-1,370.1	3,049.2	0.00	0.00	0.00	
8,300.0	0.00	0.00	7,530.0	2,724.1	-1,370.1	3,049.2	0.00	0.00	0.00	
8,400.0	0.00	0.00	7,630.0	2,724.1	-1,370.1	3,049.2	0.00	0.00	0.00	
8,500.0	0.00	0.00	7,730.0	2,724.1	-1,370.1	3,049.2	0.00	0.00	0.00	
8,600.0	0.00	0.00	7,830.0	2,724.1	-1,370.1	3,049.2	0.00	0.00	0.00	
8,700.0	0.00	0.00	7,930.0	2,724.1	-1,370.1	3,049.2	0.00	0.00	0.00	
8,800.0	0.00	0.00	8,030.0	2,724.1	-1,370.1	3,049.2	0.00	0.00	0.00	
8,900.0	0.00	0.00	8,130.0	2,724.1	-1,370.1	3,049.2	0.00	0.00	0.00	
9,000.0	0.00	0.00	8,230.0	2,724.1	-1,370.1	3,049.2	0.00	0.00	0.00	
9,100.0	0.00	0.00	8,330.0	2,724.1	-1,370.1	3,049.2	0.00	0.00	0.00	
9,200.0	0.00	0.00	8,430.0	2,724.1	-1,370.1	3,049.2	0.00	0.00	0.00	
9,300.0	0.00	0.00	8,530.0	2,724.1	-1,370.1	3,049.2	0.00	0.00	0.00	

<b>Database:</b>	NN	<b>Local Co-ordinate Reference:</b>	Well WGV 311-27-697 - Slot WGV 311-27-697
<b>Company:</b>	Terra Energy Partners, LLP	<b>TVD Reference:</b>	RKB @ 30' @ 8412.0ft
<b>Project:</b>	Garfield County, CO (Nad 83)	<b>MD Reference:</b>	RKB @ 30' @ 8412.0ft
<b>Site:</b>	Acro Deep 1-27	<b>North Reference:</b>	True
<b>Well:</b>	WGV 311-27-697	<b>Survey Calculation Method:</b>	Minimum Curvature
<b>Wellbore:</b>	OWB		
<b>Design:</b>	Plan		

Planned Survey										
Measured Depth (ft)	Inclination (°)	Azimuth (°)	Vertical Depth (ft)	+N/-S (ft)	+E/-W (ft)	Vertical Section (ft)	Dogleg Rate (°/100usft)	Build Rate (°/100usft)	Turn Rate (°/100usft)	
9,400.0	0.00	0.00	8,630.0	2,724.1	-1,370.1	3,049.2	0.00	0.00	0.00	
9,500.0	0.00	0.00	8,730.0	2,724.1	-1,370.1	3,049.2	0.00	0.00	0.00	
9,522.0	0.00	0.00	8,752.0	2,724.1	-1,370.1	3,049.2	0.00	0.00	0.00	
<b>TD at 9522.0</b>										

Design Targets										
Target Name	Dip Angle (°)	Dip Dir. (°)	TVD (ft)	+N/-S (ft)	+E/-W (ft)	Northing (usft)	Easting (usft)	Latitude	Longitude	
WGVS 311-27-697 VP - hit/miss target - Shape - Point	0.00	0.00	6,877.0	2,724.1	-1,370.1	1,618,438.100	2,234,661.300	39.500020	-108.212597	
WGVS 311-27-697 BHL - plan hits target center - Circle (radius 50.0)	0.00	0.00	8,752.0	2,724.1	-1,370.1	1,618,438.100	2,234,661.300	39.500020	-108.212597	

Casing Points						
Measured Depth (ft)	Vertical Depth (ft)	Name	Casing Diameter (")	Hole Diameter (")		
1,980.9	1,828.0	9 5/8"	9-5/8	12-1/4		

Formations						
Measured Depth (ft)	Vertical Depth (ft)	Name	Lithology	Dip (°)	Dip Direction (°)	
0.0	0.0	GRRV		0.00		
862.9	851.0	GRRV MGNV		0.00		
1,299.9	1,245.0	ANVIL POINTS		0.00		
1,747.3	1,628.0	GARDEN GULCH		0.00		
2,194.6	2,011.0	DOUGLAS CREEK		0.00		
2,616.3	2,372.0	ORANGE MARKER		0.00		
2,938.7	2,648.0	WSTC		0.00		
4,964.0	4,382.0	G SAND		0.00		
5,197.6	4,582.0	FRUN		0.00		
5,778.4	5,082.0	L WASATCH		0.00		
6,609.3	5,852.0	OCRK		0.00		
7,069.8	6,302.0	U MESAVERDE		0.00		
7,346.7	6,577.0	PERFMIN		0.00		
7,647.0	6,877.0	KMVGAS		0.00		
8,767.0	7,997.0	CMEO		0.00		
9,322.0	8,552.0	RLNS		0.00		
9,522.0	8,752.0	TD		0.00		

<b>Database:</b>	NN	<b>Local Co-ordinate Reference:</b>	Well WGV 311-27-697 - Slot WGV 311-27-697
<b>Company:</b>	Terra Energy Partners, LLP	<b>TVD Reference:</b>	RKB @ 30' @ 8412.0ft
<b>Project:</b>	Garfield County, CO (Nad 83)	<b>MD Reference:</b>	RKB @ 30' @ 8412.0ft
<b>Site:</b>	Acro Deep 1-27	<b>North Reference:</b>	True
<b>Well:</b>	WGV 311-27-697	<b>Survey Calculation Method:</b>	Minimum Curvature
<b>Wellbore:</b>	OWB		
<b>Design:</b>	Plan		

Plan Annotations				
Measured Depth (ft)	Vertical Depth (ft)	Local Coordinates		Comment
		+N/-S (ft)	+E/-W (ft)	
120.0	120.0	0.0	0.0	Start Build 3.00
220.0	220.0	2.0	1.7	Start 50.0 hold at 220.0 MD
270.0	269.9	4.0	3.4	Start DLS 3.00 TFO -72.02
1,272.2	1,221.3	260.2	-100.8	Start 4300.6 hold at 1272.2 MD
5,572.8	4,903.3	2,235.6	-1,118.5	Start Drop -1.50
7,647.0	6,877.0	2,724.1	-1,370.1	Start 1875.0 hold at 7647.0 MD
9,522.0	8,752.0	2,724.1	-1,370.1	TD at 9522.0