

Eaton Field #1 Photographic Log Remediation #21910

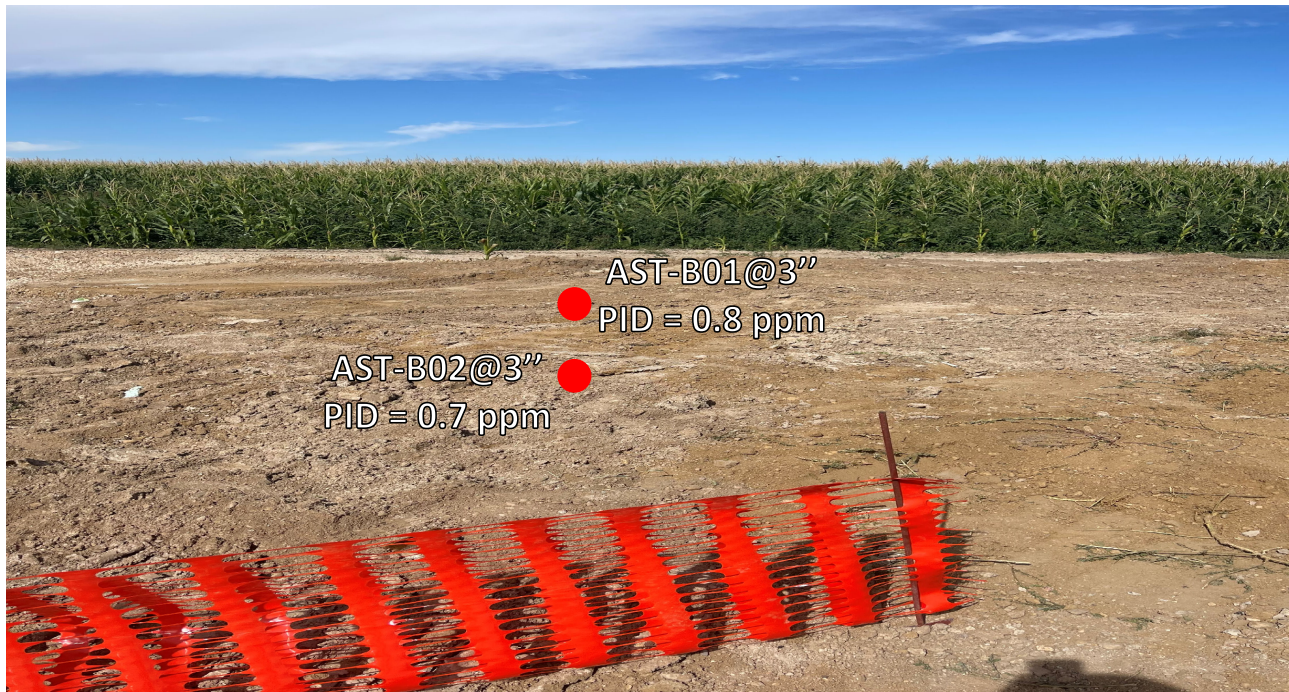
Facility Decommissioning



EAGLE
ENVIRONMENTAL
CONSULTING, INC.

8000 W 44th Ave, Wheat Ridge, CO 80033
Ph: 303-433-0479 • F: 303-325-5449

Tank Battery



Aboveground Storage Tank (AST) sample location facing north.

PID = photoionization detector

ppm = parts per million

Tank Battery



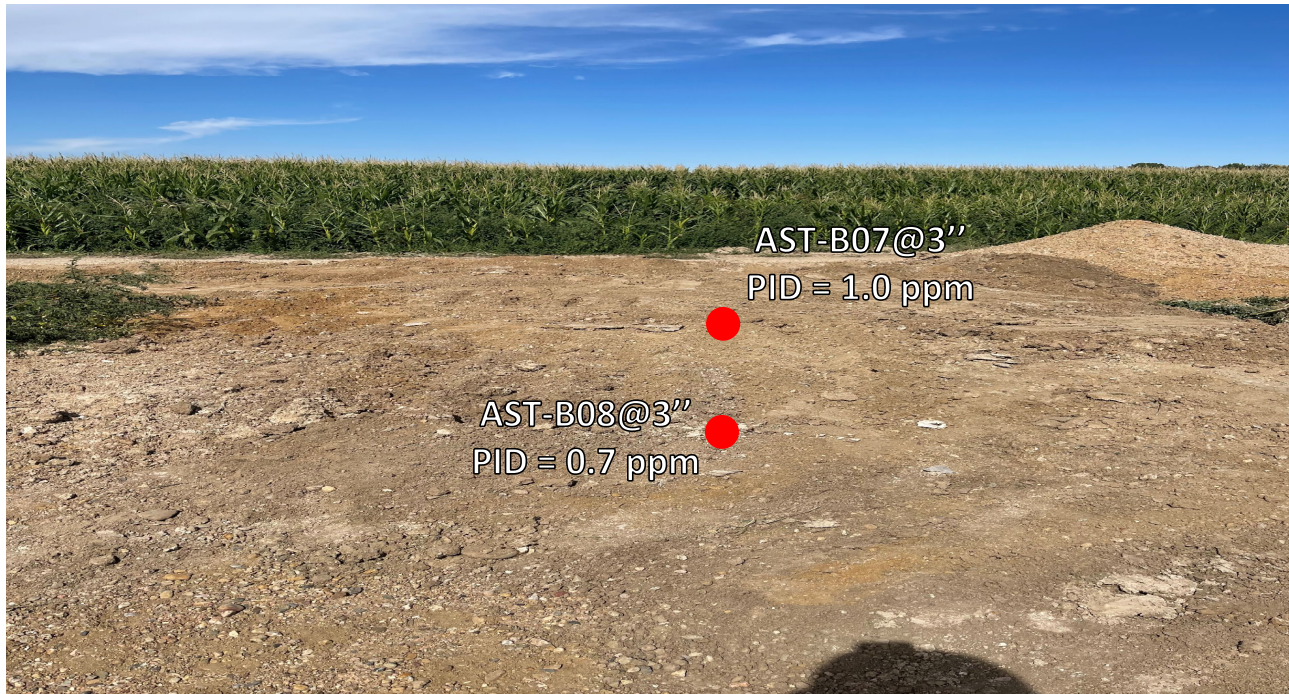
AST sample location facing north.
PID = photoionization detector
ppm = parts per million

Tank Battery



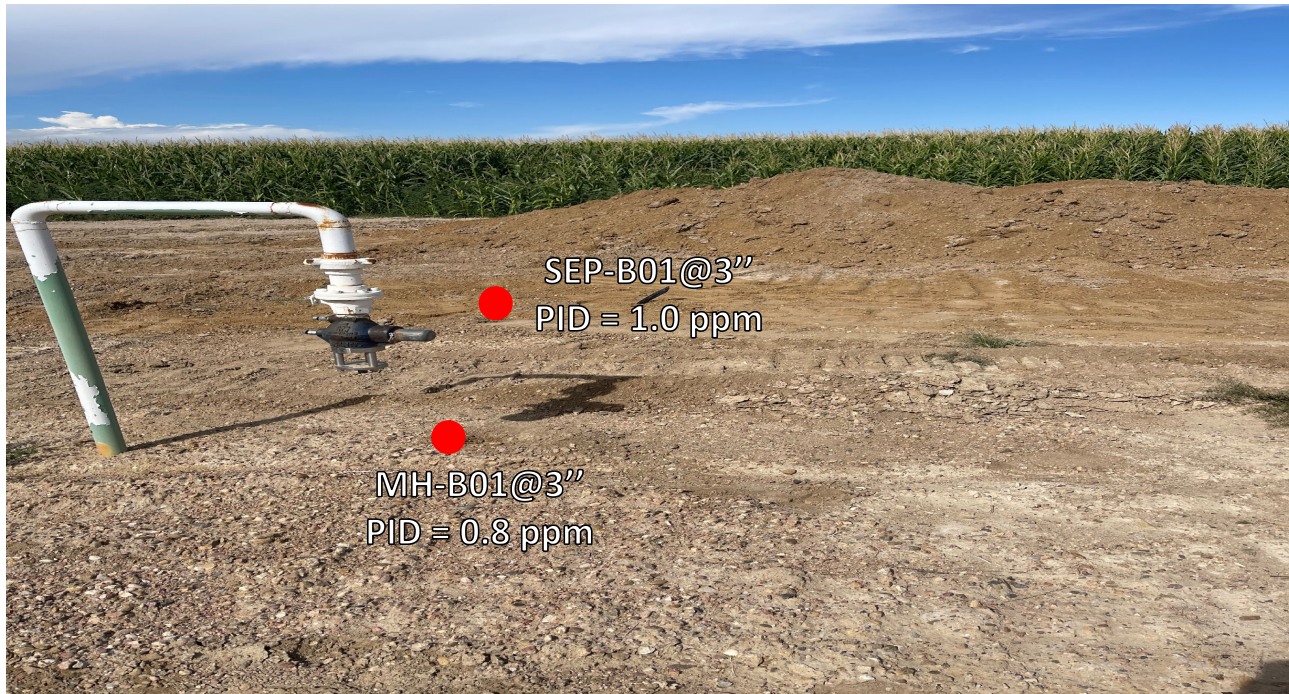
AST sample location facing north.
PID = photoionization detector
ppm = parts per million

Tank Battery



AST sample location facing north.
PID = photoionization detector
ppm = parts per million

Tank Battery

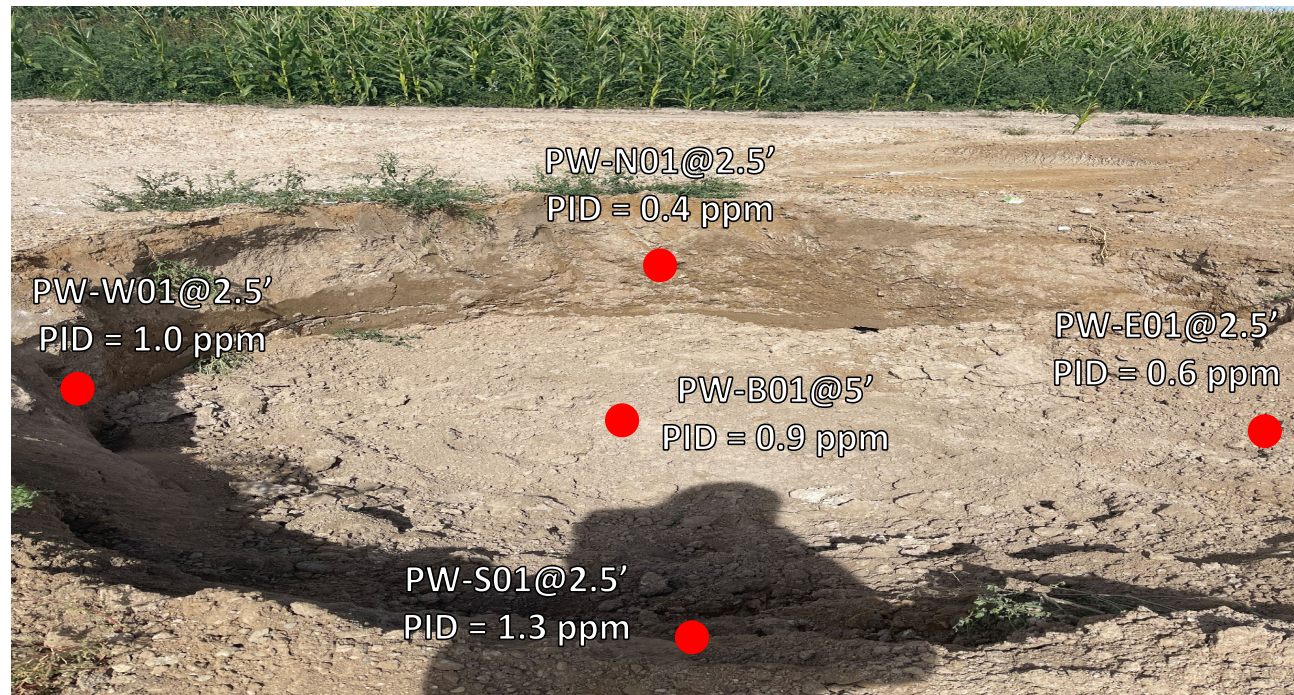


Meter House and Separator sample locations facing north.

PID = photoionization detector

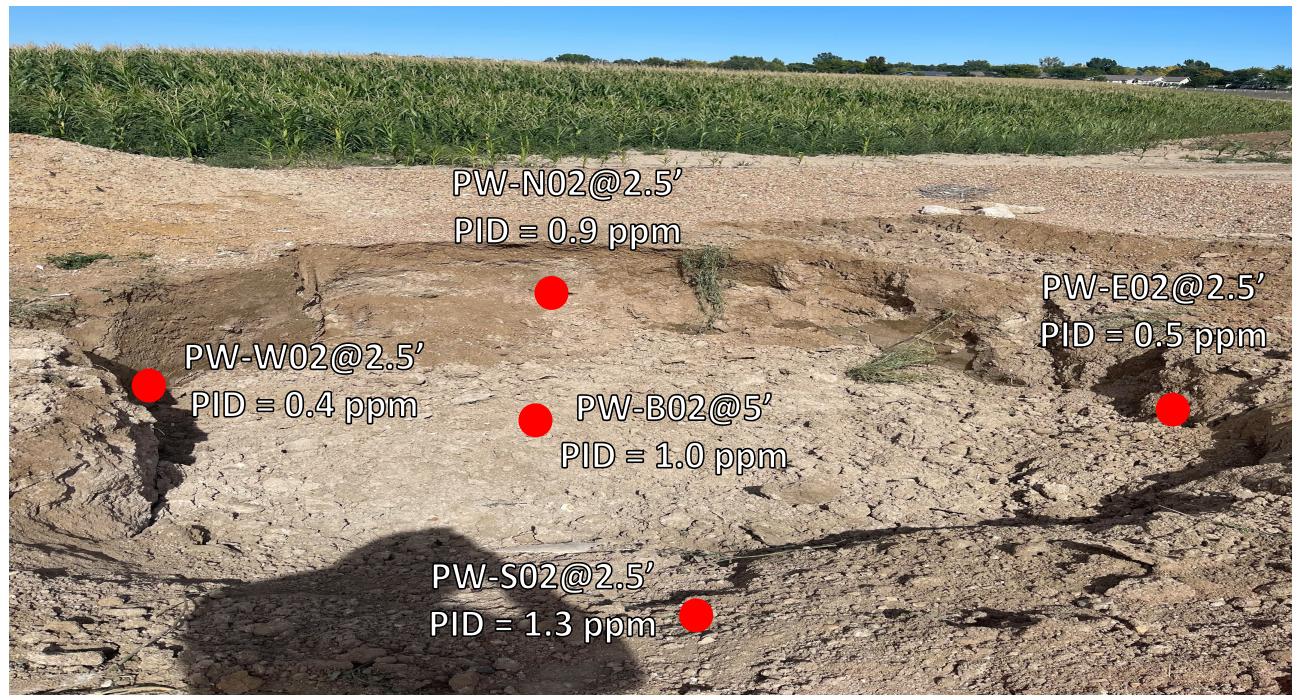
ppm = parts per million

Tank Battery



Produced Water Vessel sample locations facing north.
PID = photoionization detector
ppm = parts per million

Tank Battery



Produced Water Vessel sample locations facing north.

PID = photoionization detector

ppm = parts per million