



00603331

WELL LOCATION

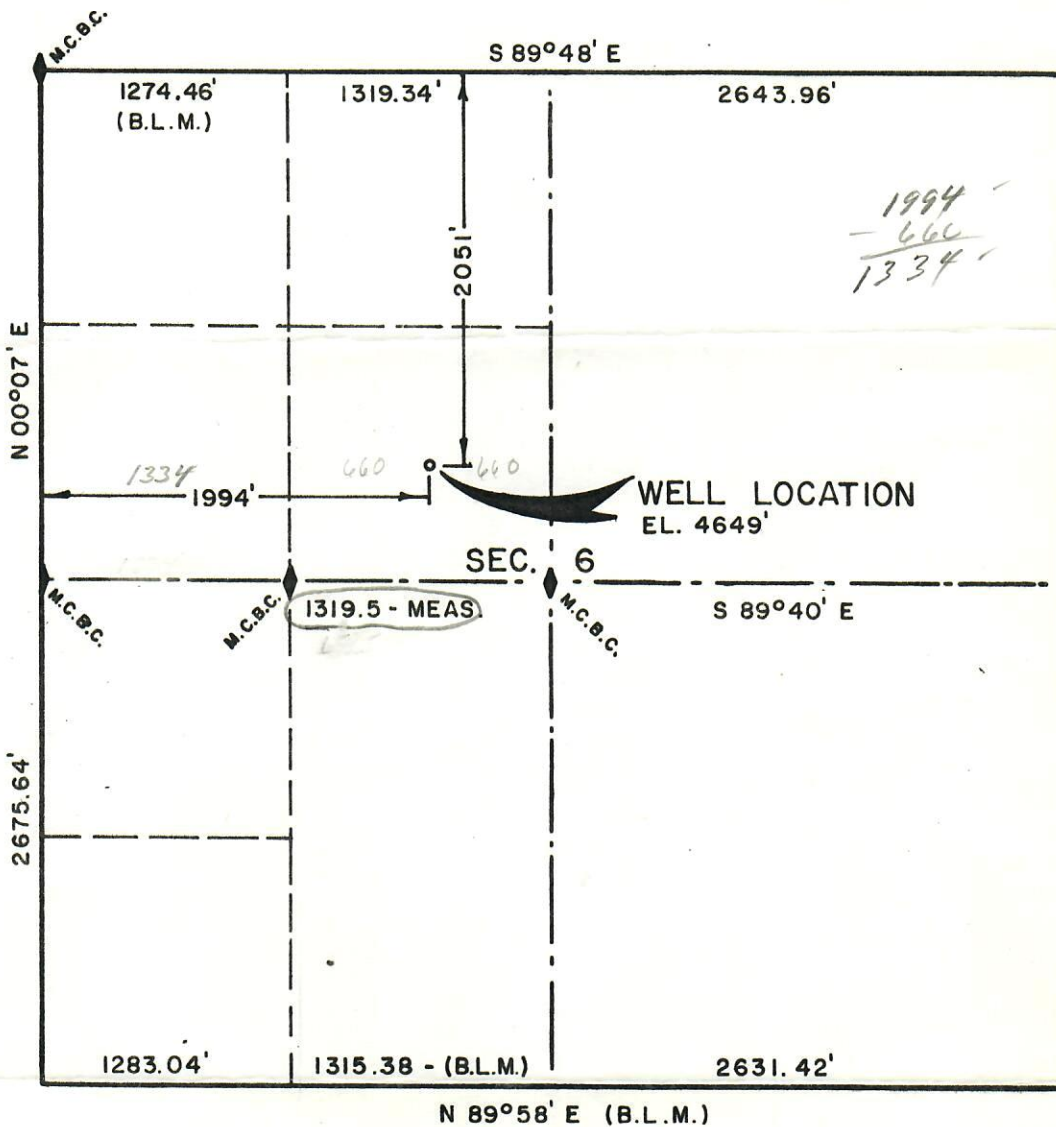
2051 FT. S.N.L. - 1994 FT. E.W.L.

SECTION 6, T2N, R3W, U.M. COLO. OIL & GAS CONS. COMM.

RECEIVED

SEP 25 1978

659.75



Scale 1" = 1000'

2640
2051
589

I, David L. Bear do hereby certify that this plat was plotted from notes of a field survey made under my direct responsibility, supervision and checking on Sept. 11, 1978.

David L. Bear
Registered Land Surveyor

WESTERN ENGINEERS, INC.

WELL LOCATION

WALTER S. FEES JR.

BAER # 1

MESA COUNTY, COLORADO

SURVEYED D.B. DRAWN R.W.Q.

GRAND JUNCTION, COLO. 9/12/78