



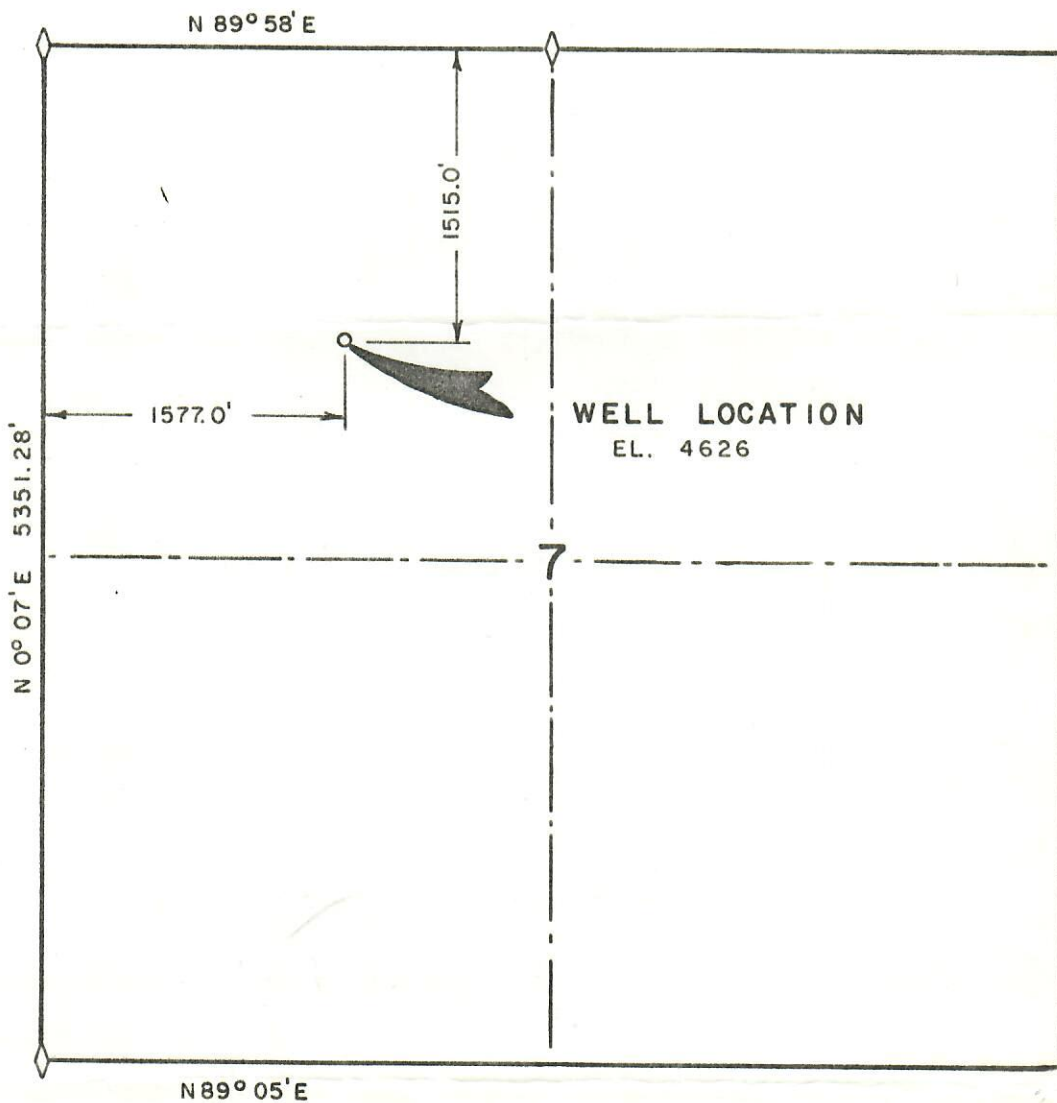
RECEIVED

WELL LOCATION

DEC 29 1978

1515.0 FT. S.N.L.-1577.0 FT. E.W.L.
SECTION 7, T2N R3W UTE MERIDIAN

COLO. OIL & GAS CONS. COMM.



Scale 1" = 1000'

I, David L. Bear do hereby certify that this plat
was plotted from notes of a field survey made under my
direct responsibility, supervision and checking on
December 18, 1978.

David L. Bear
Registered Land Surveyor

WESTERN ENGINEERS, INC.

WELL LOCATION

WALTER S. FEES JR.

SLAUGH NO. 1

MESA COUNTY, COLORADO

SURVEYED D.L.B. DRAWN G.L.A.

GRAND JUNCTION, COLO. 12/19/78